

RIVM report 612810 011

CONSEXPO 3.0
Consumer exposure and uptake models

M.P. van Veen

May 2001

Dit onderzoek werd verricht in opdracht en ten laste van de Keuringsdienst van Waren van het Ministerie van VWS, in het kader van project 612810 'Risicoschatting voor de Consument'.

Abstract

The report provides tools to assess human exposure to chemicals emitted by consumer products. It presents a modelling approach based on mathematical contact, exposure and uptake models. For each route of exposure, a number of exposure and uptake models are included. A general framework joins the particular exposure and uptake models. The models are implemented in a computer program, CONSEXPO.

Contents

Summary 6

Samenvatting 7

1. Introduction 8

2. Theoretical framework 10

3. Installation 12

3.1. System requirements 12

3.2. Installation 12

4. The Program 13

4.1. Introduction 13

4.2. CONSEXPO basics: displays 13

4.3. CONSEXPO basics: setting up an exposure assessment 13

4.4. CONSEXPO basics: reporting exposure and uptake results 14

4.5. CONSEXPO basics: standard setting 17

4.6. Graphical user interface: menu and toolbar 17

5. Exposure and uptake models 21

5.1. Introduction 21

5.2. Contact 21

5.3. Inhalation Route 22

5.4. Dermal route 35

5.5. Oral route 42

6. Database 47

6.1. Introduction 47

6.2. Disabled database 48

7. Stochastic parameters 49

7.1. Introduction 49

- 7.2. Worst case calculations 49
- 7.3. Distributions 51
- 7.4. Displaying exposure or uptake distributions 53
- 7.5. Sensitivity analysis 53

8. Tutorial 55

- 8.1. Step 2. 55
- 8.2. Step 3. 55
- 8.3. Step 4. 56
- 8.4. Step 5. 57
- 8.5. Step 6. 57

References 58

Appendix 1 Mailing list 61

Appendix 2. Default values from CONSEXPO 2 63

Summary

The predictive models, the program and the manual presented in this report are tools to assess human exposure to chemicals emitted by consumer products. Consumer products comprise a large diversity, ranging from shoe polish, to detergents, to pesticides. All these products may contain hazardous chemicals, for example active ingredients and contaminants. Human exposure assessments for these products do not equal measuring product concentrations. Products will emit their chemicals during use and the concentration in air, water or a diluted product determines the exposure. The duration of use and residence times in a room or house determine the duration of exposure.

The present report provides a modelling approach based on mathematical contact, exposure and uptake models. For each route of exposure, a number of exposure and uptake models are included. A general framework joins the particular exposure and uptake models selected by the user. By combining different models and different routes, the program copes with consumer product diversity. The program allows for stochastic parameters, to include variability and uncertainty. The program calculates the resulting exposure and uptake distributions, and allows any percentile to be calculated.

This program is linked to a database, which will contain predefined exposure and uptake models for categories of product, for example paints or pest control products. The exposure assessment of a product is initiated with the default models and model parameters according to their category of products. These can be adjusted to include existing knowledge in the assessment.

The program reports local exposure concentrations and systemic doses on the acute and semichronic time scale. These include the mean event concentration, the yearly averaged concentration, the fraction taken up, the amount taken up during a year (per route and summed) and the uptake per kilogram body weight per day.

Samenvatting

De voorspellende modellen, het programma en de achtergronden in het rapport zijn bedoeld voor de menselijke blootstellingschatting van chemische stoffen in consumentenproducten. Consumentenproducten omvatten een grote diversiteit aan producten, zoals schoenpoetsmiddel, detergenten en pesticiden. Al deze producten bevatten mogelijk voor de mens gevaarlijke stoffen, zoals actieve ingrediënten en verontreinigingen. Een blootstellingschatting voor dergelijke producten omvat meer dan het meten van productconcentraties. Stoffen uit de producten komen in lucht of in water en producten worden mogelijk verdund. Ook de duur van contact en de verblijftijd in huis bepalen de blootstelling.

Het onderliggende rapport bevat een modelmatige benadering, gebaseerd op contact-, blootstelling- en opnamemodellen. Voor elke blootstellingroute zijn mathematische modellen aanwezig. Een algemeen raamwerk verbindt de modellen zoals ze door een gebruiker geselecteerd zijn. Door verschillende modellen te combineren wordt de blootstelling aan een product beschreven. In het programma kunnen ook stochastische parameters gegeven worden, die verdelingen van blootstelling en opname opleveren. Hieruit kan een willekeurig percentiel opgevraagd worden.

Het programma is verbonden met een database, waarin voorgedefinieerde blootstelling- en opnamescenario's komen te staan. De beoordeling van een product begint dan met de standaardmodellen en standaardparameters voor de productcategorie. Deze kunnen worden aangepast om de huidige stand van zaken in de beoordeling te betrekken.

Het programma rapporteert diverse blootstellingmaten, waaronder de gemiddelde blootstelling gedurende contact, de jaargemiddelde blootstelling, de opname en de opname per kilogram lichaamsgewicht.

1 Introduction

The CONSUMER EXPOSURE models (CONSEXPO) application is a computer modelling tool to assist in residential human exposure assessment. The third version of the application extends the second substantially and it is described in this report. Four driving forces acted during update. First the use of CONSEXPO for biocide risk assessment required additional models e.g. for spraying and for dermal contact. Second, the implementation of a defaults database and the availability of the first factsheets to fill the database required a version that could read and use that database. Third, the introduction of 32bits operating systems requested a 32bit version. Finally, work for the European Institute of Standards (CEN) required backcalculation: what is the maximum value of a parameter, e.g. concentration of an ingredient, that causes dose to be just at the toxicologically derived exposure limit.

What is the rationale behind the exposure models in CONSEXPO ? Consumers daily use products for their personal convenience. Part of these products is food, but another part is used for all kinds of purposes. Exposure to the latter category of products is characterised by a large diversity in chemical composition and usage of products. The questions encountered during the process of human risk assessment are manifold. How to estimate exposure ? Which exposure data are available ? Are they representative for the situation in which the product is used ? Which factors that control exposure are important ? Which dose measure to calculate ? How to treat multiroute exposure ? How to characterise risk ? Which effects cause the main risks ? On which time scale are effects relevant ? For products used in residential settings (biocides, plant protection products, toys, textiles, and other kinds of consumer products) risk assessment follows the same general outline. CONSEXPO is set up to facilitate model exposure estimates for this process.

The models included in CONSEXPO range from screening models to models predicting actual exposure. The screening models provide a quick and dirty examination of exposure, while the actual exposure models aim to predict the time course of exposure. All models, screening and actual exposure, depend heavily on the applicability of the model assumptions and the accuracy of the model parameters. Even if assumptions apply, models stay simplified representations of reality and can not be expected to mimic reality in all aspects and every occasion.

The program is being developed in the framework of the RIVM project 'Risk assessment for consumers' to improve risk assessment for consumer products. It contains the algorithms proposed by Vermeire et al. (1993), which are included in the Technical Guidance Document of the European Union for the risk assessment of existing chemicals (EU, 1996) and the European Union System for the Evaluation of Substances EUSES (ECB, 1996). The general context of the CONSEXPO program within the RIVM is sketched by Vermeire and Van Veen (1996). They also describe other exposure models of the RIVM, covering direct exposure and exposure through the environment and food chain.

I would like to thank Bas Blaauboer, Peter Bragt, Harry Bremmer, Henk Derks, Jan van Eijkeren, Jan Freijer, Tjalling Jager, Rolaf van Leeuwen, Wim Mennes, Henk Roelfzema, Gert Steentjes, and Theo Vermeire for the many useful discussions and the time they took to test the program, to develop the database, and to report errors. The program gradually emerged under their comments. Jan van Eijkeren provided me with help on implementation problems and has prepared the dermal "diffusion in product" scenario.

Important warning

This software is provided "as is" without express or implied warranty. No liability is accepted by the developer and his employers, even if errors result from programming or modeling mistakes.

Comments

Send your comments, questions and bug reports to the author.

2 Theoretical framework

Exposure, defined here as contact with a concentration of a chemical, is determined by issues as use of products, choice of food items and site of contact. Role of exposure assessment within risk assessment is to estimate human exposures (in terms of concentrations) and doses (in terms of mg/day or mg/kg/day) from available data. It starts with specifying emission of the chemicals and transport to other parts of the residential environment. Emission and transport determine the concentration time profiles of the chemicals, during and after use of the product. Humans will contact the chemicals in various ways. For example, a volatile ingredient will enter air (emission into air and transport within a house), which is inhaled (human contact). Or the product itself is spilled on the fingers causing dermal contact. By hand-mouth contact some of the chemical can be transferred to the mouth resulting in oral contact. Oral exposure can also result from mouthing an object. Uptake into the body will occur after contact with the chemical and the amount taken up forms the internal systemic dose.

Residential exposures spring from a large diversity of products. These products contain many ingredients and an (active) ingredient will be contained in multiple products. In addition, people show widely differing behaviour in selecting and using products for tasks in the household (Weegels, 1997). The implications are manifold. If we take a single chemical as start, it means that assessing a single product may not be sufficient to cover human exposure as a whole because the chemical might be present in other products as well. In addition, exposure may also occur at the workplace, via dietary intake and via environmental contamination. What is needed is an exposure aggregated over the different sources. Much of the effort to achieve aggregated exposures is concentrated in the United States because the Food Quality Protection Act recognises that multiple sources may cause exposure to a chemical.

If we take a single product as start, it means that a product might be used in many ways. A product like dish washing fluid is not solely used for washing dishes, but acts more or less as a general purpose cleaner in the kitchen (Weegels, 1997; Weerdesteijn et al., 1999). The question is which uses fall within the normal range, even when not intended at first, and which can be set aside as aberrant.

If we take a single task as start, it means that there is a series of products that might be used for that task. There is some indication of the kinds of product that might be used, but surprises frequently arise. You would not expect someone to use hair spray for plant care. However, Weegels (1997) observed a person spraying plants with hair spray to obtain glossy leaves.

To mathematically estimate the exposure to chemicals emitted by consumer products, Van Veen (1996) developed a general model framework to include contact, exposure and uptake. In this framework, exposure is defined as the concentration of a chemical compound in the medium touching the body. For example, the exposure to an airborne pollutant is expressed in terms of mg/m^3 , a concentration measure. Uptake includes both the intake rate of the medium and the uptake rate of the compound by the body.

To summarise the general model framework, $E(x, t)$ and $U(E(x, t), t)$ represent, respectively, the potential exposure and uptake, which are converted to their actual counterparts by specifying $x_p(t)$ for the path of a person and $P(t)$ for the period of contact. The cumulative amount U_c taken up in the body is

$$U_c = \int_0^{\infty} P(t)U(E(x_p(t), t), t)dt$$

where U_c is the cumulative uptake (mg), $P(t)$ is the contact function, $x_p(t)$ is the path of a person, $E(x_p(t), t)$ is the exposure (mg/cm^3) as a function of time and path of a person, and $U(E(x_p(t), t), t)$ is the uptake rate (mg/min) as a function of exposure and time. For the inhalation and the oral routes, the uptake rate $U(E(x_p(t), t), t)$ can often be written as medium intake rate I_m times absorbed fraction F times exposure E :

$$U(E(x_p(t), t), t) = I_m(t)FE(x_p(t), t)$$

In the CONSEXPO program the spatial dependence of exposure is not included at the moment. This simplifies potential exposure to a function of time: $E(t)$.

The CONSEXPO is specifically developed to implement the general consumer product exposure and uptake model in a user friendly software package. It allows the user to specify contact, exposure, and uptake by selecting the appropriate scenarios and models from predefined lists. Then, it integrates contact, exposure, and uptake to calculate time courses of exposure and uptake.

3 Installation

3.1 System requirements

The following system requirements apply:

- Intel based PC or a compatible equivalent;
- 32bits MS-Windows operating system (95, 98, millennium, 2000, or NT) installed and working;
- 5 megabyte of hard disk capacity.

The requirement that MS-Windows 95, 98, millennium, 2000, or NT is installed and working implies that your machine has an intel-pentium or equivalent processor and that you have at least 16 Mb of internal memory.

3.2 Installation

The installation procedure installs the CONSEXPO software and the defaults database. The defaults database is under development. At the moment it contains default data for painting and defaults on the indoor environment, but in the future products and product categories will be added. Updates of the database will be made available electronically.

4 The Program

4.1. Introduction

The purpose of the program is to aid in human exposure assessment, focused on non-professional indoor use of consumer products. It provides two tools, mathematical exposure models and a defaults database. The mathematical models form the core of the program as they provide the dose estimates. The defaults database is set up to provide input to the models. It presents product categories to the user and after selection of a product category, the database provides default parameter values to the models. The database enables you, the user, to select a product instead of a model.

The mathematical models all have their constraints because they are simplified representations of a part of the real world. The model descriptions in chapter 5 and the on-line help system both outline these constraints, thereby defining the area of use for a certain model.

4.2. CONSEXPO basics: displays

The program uses two displays to show its information, one for model overview and one for plotting graphs. The model overview is present at start up. To toggle between the two displays, use the last two entries in the `Options` menu or use the rightmost buttons in the button bar. If exposure can be calculated, the graph display will automatically show the time course of exposure.

4.2.1. The model overview

The model overview summarises all models that have been set and shows whether sufficient parameters have been defined. The overview offers a short cut to model definition dialogs by clicking on the model name (or “none”).

4.2.2. The graphic display

The graph display displays distributions and time courses of exposure and uptake. Selecting the graph display enables those menu items that plot to the graph display in the `Report` menu.

4.3. CONSEXPO basics: setting up an exposure assessment

First, define the subject of the exposure assessment in terms of the product, the chemical and the foreseen use of the product *on paper*. Then, start up CONSEXPO for support with the assessment. An exposure assessment is set up from the “model overview”, where chemical, contact, exposure and uptake can be defined. The short route of exposure assessment uses the defaults database. Select the “select product type” button and use the database dialog to find an appropriate product category (chapter 6 for details). Then select the chemical of interest (or supply chemical characteristics) and define the chemical concentrations in the exposure

models. The latter is done by clicking on the model name and selecting “parameters” from the dialog that follows. If all models have “par. known” below, the input is complete.

A more complicated route follows when none of the product categories applies (which may often be the case). The exposure models have to be defined directly, which assumes knowledge about the gist of the various models. Information on the models can be attained from chapter 5 and the on-line help system. Define the exposure models by selecting the buttons for contact, exposure and uptake. For all buttons, a dialog will pop up from which models can be selected, either under ‘scenarios’ or under ‘options’. Select an appropriate model and select parameters. In the parameter-dialog, provide the parameter values. If all models signal “par. known” in the model overview, input is complete.

4.4. CONSEXPO basics: reporting exposure and uptake results

Exposure and uptake results are displayed using the entries of the report menu. The subentries allow for a numerical (Point) or graphical (Distribution; Time course) representation of exposure and uptake. Graphical output is only available when the graphical display is in use, see section 4.2.

The screenshot shows a software dialog box titled "Report". It is divided into three main sections: "Routes", "Integrated", and "Monte Carlo Percentiles".

Routes Section: A table with three rows (Inhalation, Dermal, Oral) and two columns of data. Each row has a "mg/cm3" column and an "NS" column. To the right, there are two columns for "Uptake (mg/year)" with values and a column for "F" (likely a flag).

Route	Exposure	Unit	Status	Uptake (mg/year)	F
Inhalation	2.79e-05	mg/m3	NS	1.06e-04	F
Dermal	7.50e-03	mg/cm3	NS	3.61e-02	F
Oral	0.00e+00	mg/cm3	NS	0.00e+00	F

Integrated Section: Shows summary values for "Year averaged exposure" (2.86e-06 mg/cm3), "Uptake" (3.62e-02 mg/year), "[semi]chronic dose" (1.42e-06 mg/kg/day), and "acute dose" (5.18e-04 mg/kg/day).

Monte Carlo Percentiles Section: Includes a "Print" button, a "Calculate" button, and a text input field containing the number "95".

Bottom Section: Contains four buttons: "OK" (with a green checkmark icon), "Help" (with a blue question mark icon), "Details", and "Uptake Fractions".

Figure 1. The point estimates report dialog. The dialog shows on the left the estimated exposures and on the right the estimated uptakes. The top half of the dialog shows route specific estimates, while in the lower half integrated measures are shown.

4.4.1. Point estimates

If the entry `Point` is chosen, the results are given as a point estimate. The results are given in the form of a dialog, in which the values for the estimated exposure and uptake are shown (fig. 1). Reported are:

1. mean exposure concentration during the event;
2. route specific uptake;
3. cumulative uptake;
4. internal dose on a chronic time scale (year-averaged);
5. internal dose on an acute time scale (on day of exposure).

Depending on the choice made in the Exposure definition dialogs (which can be a choice for worst case or for average case calculations), this point estimate reflects the average or the worst case exposure. Which point estimate is shown is indicated to the right of the value, where WC=worst case and AC=average case. Initially, this sign reads NS=not set. Of course, if ALL parameters are point estimates, the worst case exposure is identical to the average case exposure. If multiple parameters have variation, the worst case estimation is cumulative worst case. Each parameter achieves its 95 percentile value and those values are used to calculate the worst case exposure and uptake results.

The results in the uptake part are always based on the point estimates given in the exposure part. Depending on the uptake model, the amount taken up is based on a fraction model (sign right of value reads F), a flow model (sign reads P, available only for the inhalation route) or a diffusion model (sign reads D). This choice is set in the uptake definition dialog boxes, which differ per route. The lower entries give summary measures. On the left, the year averaged exposure is displayed. On the right, the integrated uptake is displayed, which is uptake summed over all routes. The upper entry states uptake in mg/year. If the frequency of contact is once per year, this boils down to the uptake per event. The lower entry states uptake in mg/kg body weight/day on a semichronic and an acute time scale, the toxicologists views of uptake. A year has 365.25 days, correcting for leap years. In addition to the amount taken up, the absorbed fraction through the inhalation, dermal and oral route can be inspected by choosing the "Uptake Fractions" button.

To inspect the exposure scenarios, uptake models, and their parameter values in more detail, the Details button is used. After selecting this button, details on the exposure and uptake estimates are displayed. These details consist of the contact scenario, the exposure scenario, the uptake model and the parameters used by the models. The worst case estimates given here reflect the cumulative worst case, not the Monte Carlo worst case estimates. The text viewer allows its contents to be saved or printed. Quit the text viewer by choosing Exit from the file menu. The text viewer runs concurrent with CONSEXPO, so you can display the results of several scenario/model combinations in a number of text viewer sessions. The text viewer is the Notepad by default, but another text viewer can be set in the `System` entry of the `Options` menu. If you select a different text viewer, then the precise use may deviate from the description in the above.

To circumvent the cumulative worst case estimates, the Monte Carlo Percentiles part in the dialog is used to calculate arbitrary percentiles from the eventual exposure and uptake

distributions. It uses Monte Carlo sampling from the parameter distributions to achieve the exposure and uptake distributions and rounds the requested percentile to the nearest percentile available from the Monte Carlo sampling. The number of Monte Carlo samples is set in the `System` menu, using the `Options` entry. The accuracy of the percentiles is increased by increasing the number of Monte Carlo samples. Background information on this procedure and the method that is used for its calculation can be found in chapter 7.

4.4.2. Distribution

An exposure or uptake distribution can be displayed if one or more parameters exhibit stochastic variation. If all parameters are point estimates, if there are parameters with out of range values or if there are parameters with missing values, no graph will be shown.

The dialog to select a distribution is divided into an exposure and an uptake part, containing the distributions that will be shown. Only a single distribution can be displayed, so only one can be chosen from the list. After pressing the `Ok` button or pressing the enter key, the distribution is drawn on the screen. If, during the generation of the distribution, only one parameter appears to have variation, a point graph is composed, using direct calculations. If there are multiple parameters with variation, a Monte Carlo method is used. A histogram displays the results of Monte Carlo calculations. More information about the use and interpretation of these distributions is given in Chapter 7.

If the exposure or uptake model is changed after the graph is drawn, the results are not automatically updated on screen. The `report->distribution` entry has to be chosen again to reflect the model changes in the graph. This way, you are allowed time to observe changes in exposure or uptake resulting from the model change. The number of bars in the histogram, the number of points in the graph and the number of Monte Carlo loops can be changed in the `Options` entry in the `System` menu.

4.4.3. Time course

The `Report->Time course` entry displays the exposure or uptake as a function of time. The menu entry is only enabled if the graph display is set. To set it, select `Options->Graph Display` or press the white button with the graph in the button bar. After choosing the `Time course` entry, a dialog box will appear, from which the route of exposure or uptake to be displayed can be selected. Of course, only exposures or uptakes which have been fully defined can be displayed. Investigating the time course of exposure or uptake is particularly useful for non-linear exposure scenarios, such as the inhalation open can scenario that shows a saturating exposure concentration during long exposures. The plot will be displayed after choosing the `Ok` button. To print the plot, choose `File->Print Graph` while the plot is on screen.

4.5. CONSEXPO basics: standard setting

Standard setting concerns the determination of that value of an exposure factor (e.g. leach rate, concentration in product or emission rate) that just results in the (toxicological) exposure limit. It can be regarded as 'backcalculation'. Where in exposure assessment the exposure or dose is predicted from the underlying exposure factors (the parameters in the model), standard setting calculates the value of a selected exposure factor from the exposure limit and the other exposure factors. It is used for preventive risk assessments to determine, for example, the upper limit of the leach rate such that health risk limits are not exceeded.

CONSEXPO provides provisional standard setting in the standard setting dialog, under `Report->Standard`. The calculation for a standard is started by defining an exposure estimation like you normally would do. Provide all parameters, including the one for which the standard will be calculated because the standard calculation procedure only works when the models are able to calculate exposure (check if you can make a graph for the desired route). Then open the `Report->Standard` dialog.

The first line of the dialog sets the exposure limit in terms of value and type. The value of the exposure limit may be derived from toxicological concerns. The type of limit is chronic dose (mg/kg bw/day), acute dose (mg/kg bw on day of exposure), and air concentration (mg/m³). The latter is useless for the dermal and oral routes.

The second line defines the route of exposure and the parameter for which the standard must be calculated. Select the route first, as it will change the contents of the parameter combobox. The parameter combobox contains those parameters that have a value for the selected route. If the target parameter is not in the list, it has not been given a value. Return to the model overview screen and enter all necessary values first. If the items on first and second line are all defined, the standard calculation is started by clicking on `Ok`. The third line shows an indicator for the progress. If the status bar is completely filled the parameter standard value has been determined.

After the calculations, the last line presents the standard value of the parameter selected in line 2, or presents an error indicating that a standard value can not be calculated. Reasons for failure are exposure always below limit, exposure always above limit or calculation failure. In the first two cases, no value of the parameter will cause exposure to be at the desired exposure limit. A practical way to proceed is to perform sensitivity analysis for the parameter. In the latter case, the problem takes to many steps to be solved.

4.6. Graphical user interface: menu and toolbar

The menu and toolbar bar is displayed at the top of the CONSEXPO window (fig. 2). The menu contains entries for handling files and printing (`File`), system wide settings (`Options`), getting help (`Help`) and defining and analysing exposure and uptake models (`Report`, `Contact`, `Exposure`, `Uptake` and `Product`). The toolbar contains shortcuts to a number of menu entries. Menu entries and toolbar buttons are explained in the lower bar of the program when the mouse is on top of an entry or button. Summarised, the menu bar contains eight main entries.

- **File** all commands concerning file handling and graphics printing, and the info and exit commands,
- **Options** all commands concerning the calculation routines as a whole,
- **Product** all commands concerning the retrieval of information from the defaults database, including product category defaults and chemical properties
- **Report** all commands concerning the model results and the definition of models,
- **Contact** all commands concerning contact,
- **Exposure** all commands concerning exposure. It contains the routes contact, and for each route the appropriate exposure scenario can be selected,
- **Uptake** all commands concerning uptake. It contains the routes of contact, and for each route the appropriate uptake model can be selected,
- **Help** commands to display help information.

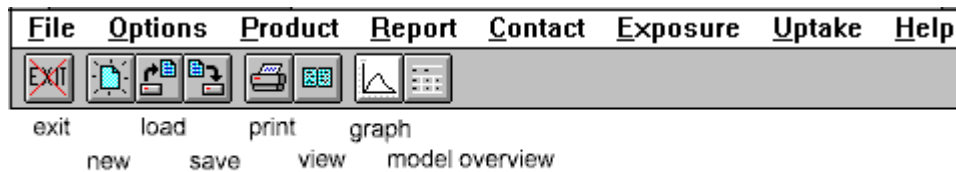


Figure 2. Menu and tool bar of CONSEXPO. Tool bar buttons are explained with keywords.

4.6.1. File menu

The File menu consists of the following entries:

- **New** resets all parameter values and options in order to start a new risk assessment session;
- **Open** opens a previously saved risk assessment session;
- **Save** saves the present risk assessment session. If the session has not been named yet, a file name is requested;
- **Save As** name the risk assessment session and save it;
- **Print preview** preview the graph currently displayed on screen as it will be printed;
- **Print** print the graph currently displayed on screen. It will be printed on the Windows standard printer.
- **Print set-up** set the printer and change the settings of the printer.
- **Exit** leave the program. All results will be lost unless saved.

4.6.2. Options menu

The System menu is used to set some general model settings:

- **System.** Displays a dialog box to set system wide properties, including the number of bars of a histogram, the number of points that are calculated to compose a point graph, the number of Monte Carlo loops and database properties.

- **Calculator.** Shows a calculator which can be used to do additional calculations. The default calculator is the MS-Windows calculator, but it can be replaced by any other calculator in the Options entry.
- **Graph display.** Switch to the graph display screen. The options `distribution` and `time course` in the Report menu become available.
- **Model overview.** Switch to the model overview screen.

4.6.3. Product menu

The product menu contains entries to read the database.

- **Select product type.** Select the product type from the defaults database and read default models and parameter values.
- **Select chemical.** Select or set the physico-chemical properties of the chemical compound. If a database is available (see chapter 6), physio-chemical properties can be loaded by using the select or the retrieve buttons. The select button enables searches with wildcards (% for matching any length sequence of characters), retrieve performs an exact search for a name or CAS-number.

4.6.4. Report menu

The Report menu entry is used to view the results of the exposure and uptake model. The `Distribution` and `Time course` entries that use graphical output are only enabled when the graph display is selected, see section 3.1. Otherwise, these entries are greyed out.

- **Point estimates.** Show point estimates of exposure and uptake.
- **Standards.** Performs a standard setting procedure, by backcalculating that parameter value that just results in a given limit value for chronic or acute dose, or a air concentration.
- **Distribution.** Show the variability of exposure or uptake in case one or more parameters are variable.
- **Sensitivity.** Performs sensitivity analysis of a model.
- **Time course.** Show the time course of exposure or cumulative uptake.

4.6.5. Contact menu

The Contact menu entry specifies the contact part of the exposure and uptake model. The contact parameters define the function $P(t)$ as defined in Van Veen (1996). The body weight or body weight distribution of the exposed persons is also defined here.

- **Define** to actually define the contact parameters,
- **Human** to specify the human body weight.

4.6.6. Exposure menu

The Exposure menu entry defines the exposure part of the exposure and uptake model. Exposure is defined as the concentration of the chemical compound in the medium in contact with the body. It defines the function $E(x,t)$ as defined in Van Veen (1996). In the present version of the program, spatial differences in exposure are not allowed. Therefore, the exposure function reduces to a function depending on time, $E(t)$.

The entry contains the routes of exposure as subentries. Choosing one of the routes displays a dialog box which allows you to set up the route, including the scenario of exposure and the parameters belonging to that scenario. If no scenario has been chosen and the scenario box displays "none", no parameters can be set and the "parameter" button does not react. It is possible to define exposure through multiple routes and the results of multi-route exposure will be shown in the Report menu entry.

4.6.7. Uptake menu

The Uptake menu entry defines the uptake part of the exposure and uptake model. Uptake is defined as both the intake rate of the medium and the uptake through the body boundary. It defines the function $U(E(x,t), t)$ as defined in Van Veen (1996). The entry has the routes of uptake as subentries. Choosing one of these routes displays an uptake definition dialog, which allows you to set up the uptake for that route. From the dialog box, the uptake model, the scenario of uptake, and the uptake parameters are chosen.

The uptake model can be a fraction model or a diffusion model. The fraction model calculates the uptake by means of the absorbed fraction. The diffusion model calculates the uptake by means of a two compartmental diffusional uptake model, described in section 3 of Van Veen (1996). For inhalation uptake a third model is available, the equilibrium flow model, as used by e.g. Ramsey and Andersen (1984) or McKone (1993). This model is based on equilibrium exchange in the lung.

4.6.8. Help menu

Accesses the help system of the program.

- **Info.** General information on the CONSEXPO 3 program.
- **Routes of exposure.** Information on the routes of exposure and the available models for the routes.
- **Database.** Information on the defaults database and its use.
- **Menu.** Information on the menu of the program and the meaning of its entries. In fact the on line version of this chapter.
- **Tutorial.** The online version of the tutorial.

5 Exposure and uptake models

5.1. Introduction

CONSEXPO 3 is a multiroute, single chemical modelling tool. Exposure and uptake models can be defined for each route of contact. The models and their parameters are presented here. First, contact is discussed. Second, exposure and uptake models are presented per route of exposure.

5.2. Contact

For all routes of exposure, the parameters to describe contact are frequency, duration of actual use, duration of contact and start of contact. The default values depend on the contact scenario that is selected. If no contact scenario is selected, i.e. scenario "none" is selected, the system defaults are displayed. The meaning of these parameters and the system defaults are defined as follows:

- **Frequency.** the frequency of use, in number of events per time interval. The Report ->Point box gives year averaged values for route specific uptakes. A frequency of 1/year actually implies that route specific uptakes are the uptake for 1 event.
- **Total Duration.** the total duration of contact per event. This duration is the full time interval of contact, whether the product is actually used or not.
- **Duration of use.** the duration of actual use of the product per event. This is the time interval that the chemical compound is released from the product.

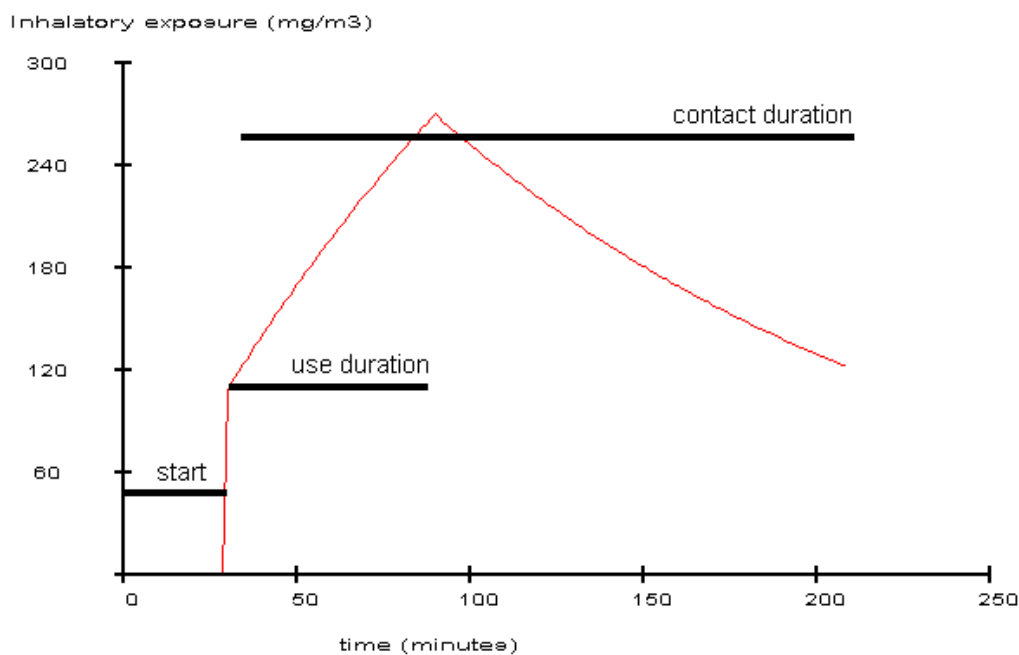


Figure 3. Definition of contact parameters.

- **Start.** the start of contact relative to the onset of the exposure. For users, this parameter should be set to 0, implying that contact start at the moment the product is used (at $t=0$). The parameter is useful for bystanders when the exposure varies in time, for instance when the concentration is build up slowly. The start of contact defines which concentration is initially contacted. If the exposure is a constant concentration, the start parameter is unimportant and should be 0.

5.3. Inhalation Route

Many products and the chemicals therein reach our body via the air and enter the body via the inhalation route. A simple example is a spray containing a volatile product. After spraying the product, chemicals in the product fill the room and the inhaled air will contain these compounds. The scenario's defined in the program are developed to describe exposure to consumer products. They do not adequately describe exposure to outdoor pollutants, for which day to day and hour to hour variations in the concentration are important in calculating the mean exposure.

In comparison to CONSEXPO 2, the 3rd version adds two spray models, a simplistic well mixed model with no evaporation and an extended cloud model with evaporation. The spray models are based on the theory presented by Reist (1993) and Matoba et al. (1998). They model generation of spray droplets. The well mixed room model disperses these droplets in the room, the cloud model describes a spray cloud floating to the floor.

5.3.1. Inhalation contact

The contact with a compound is defined using the `define` subentry of the `contact` menu entry, see section 5.2.

5.3.2. Inhalation exposure

To describe the inhalation exposure, the program defines six exposure scenarios. The constant concentration scenario, the source and ventilation scenario, the evaporation from pure substance scenario, the evaporation from mixture scenario, the indoor exhaust gas scenario, the paint scenario, the spray: well mixed scenario and the spray: cloud scenario. Together, these scenario's allow for a wide range of situations.

Constant Concentration. In this scenario, the concentration in a single room is assumed to be constant. It is assumed that the amount of product that is released immediately fills the room and achieves an average concentration. This might be valid for volatile products with high diffusion rates. See Vermeire et al. (1993) for background information. The equation to calculate the exposure is

$$E = \frac{w_f q}{V_{room}}$$

where q is the product amount released, w_f is the weight fraction of the compound in the product and V_{room} the volume of the room.

The parameters of the Constant Concentration scenario can be described as follows:

Amount Released: the amount of product released in the room.

Weight Fraction: the weight fraction of the chemical in the product.

Room Volume: volume of the room in which the exposure occurs.

Source and Ventilation. This scenario describes a room where some source emits a chemical compound in the air, while the room is also ventilated with ambient air. The ambient air might be clean, but it also might contain the chemical compound of interest, emitted by other sources. This scenario generates exposures changing with time, making the contact start parameter (see contact menu entry) an important one. The formula is based on Sparks et al. (1994):

$$V_{room} \frac{dE(t)}{dt} = S - Q_{room} (E(t) - C_{ambient}) - eV_{room} E(t)$$

where $E(t)$ is the exposure in the room, V_{room} is the room volume, S the generation rate of the compound, Q_{room} the effective ventilation rate, $C_{ambient}$ the ambient air concentration and e the break down rate of the compound. This differential equation can be solved with initial concentration E_0 to give:

$$E(t) = E_0 e^{-\left(\frac{e+Q_{room}}{V_{room}}\right)t} + \frac{S + Q_{room} C_{ambient}}{Q_{room} + eV_{room}} \left[1 - e^{-\left(\frac{e+Q_{room}}{V_{room}}\right)t} \right]$$

The scenario is based on the following parameters:

Generation Rate: generation rate of the compound in weight per time released into the air.

Ventilation Rate: amount of air that ventilates the room per unit of time.

Ambient Concentration: concentration of the compound in ambient air which is used to ventilate the room.

Break Down Rate: the break down rate of the compound in fraction per time unit.

Room Volume: volume of the room in which the exposure occurs.

Evaporation from Pure Substance. This scenario defines a situation in which a pure substance evaporates in a room. The evaporation rate depends on the difference in vapour pressure between the pure substance and the actual vapour pressure of the evaporated substance in air. Additionally, the room is ventilated with ambient air. Eventually, an equilibrium will be reached between the concentration in the substance and in air. This scenario is derived from Jayjock (1994). The scenario can only be calculated if the physico-chemical properties of the compound are given in the Compound menu entry.

The equation given by Jayjock (1994) is slightly extended to incorporate initial concentrations which are not equal to 0.

$$E(t) = E_0 e^{-\frac{K_t A + Q_{room}}{V_{room}} t} + \frac{1000 K_t MAP}{RT(K_t A + Q_{room})} \left[1 - e^{-\frac{K_t A + Q_{room}}{V_{room}} t} \right]$$

where E_0 the initial compound concentration in air, K_t a constant calculated from the molecular weight, A the area from which evaporation takes place, Q_{room} the effective ventilation rate, V_{room} the room volume, M the molecular weight, P the vapour pressure of the compound, R the universal gas constant, and T the absolute temperature.

Its parameters are:

Release Area: the surface area of the canned product which is in contact with the air.

Temperature: The temperature in the room.

Room Volume: volume of the room in which the exposure occurs.

Effective Ventilation Rate: amount of air that ventilates the room per unit of time.

Evaporation from Mixture. This scenario defines a situation where chemicals evaporate from a product consisting of a mixture of chemicals. The evaporation rate is driven by the difference of equilibrium vapour pressure and the actual vapour pressure. The model simplifies the concentration of the chemical in the product to a constant value. The model is not valid if the concentration changes significantly. In that case, the ‘paint’ model is more appropriate.

The room is ventilated with clean ambient air, and therefore the concentration of the compound in air will reach an equilibrium. This scenario is derived from Jayjock (1994), combined with Raoult's law. The open can scenario assumes that the product is a binary mixture, consisting of the chemical of interest and an “averaged chemical”, replacing the other chemicals. The scenario can only be calculated when the properties of the compound are given in the Compound menu entry. The equation for the evaporation has already been given in the pure substance scenario. Raoult's law is expressed as:

$$P_{part} = \frac{x/M_x}{x/M_x + y/M_y}$$

where P_{part} is the partial vapour pressure of compound x in the product, x is the concentration of the compound x , M_x is the molecular weight of compound x , y is the concentration of the other compounds, and M_y is the average molecular weight of those compounds.

Its parameters are:

Release Area: the surface area of the product which is in contact with the air.

Temperature: The temperature in the room.

Room Volume: volume of the room in which the exposure occurs.

Effective Ventilation Rate: amount of air that ventilates the room per unit of time.

Molecular weight matrix: the average molecular weight of the matrix which contains the chemical of interest. If this matrix is a combination of compounds, use the weighted average of the molecular weights, where each compound is weighted by its concentration in the matrix.

Indoor Exhaust Gas. The scenario predicts carbon monoxide concentrations in a room from combustor and room characteristics. A pictorial scheme of the model is displayed in figure 4. A single room is modelled, where a natural gas combustor (e.g. a stove, heater, or geyser) emits exhaust gas containing CO into the room. The CO₂ content of the air used for combustion determines the CO production of the combustor (De Vries and Bartelomeus, 1973).

Experiments (De Vries and Bartelomeus, 1973) have shown that hot exhaust gas separates the room air in a warm upper and a cold lower layer. Exchange between both layer decreases with increasing temperature gradient. The model distinguishes three air layers in the room: 1) the air directly above the combustor; 2) the air in the warm upper layer; 3) the air in the cold lower layer.

Ventilation is separated into outgoing and incoming components. Outgoing ventilation is forced by (mechanical) ventilation located above the combustor and/or outer wall. Incoming ventilation is situated near the bottom, in the cold lower layer. It suppletes the air removed by outgoing ventilation.

Validation experiments by Dijkhof, Bakker and Meuleman (1999) showed that the model performs well for ventilation volumes below 0.5 Air Changes per Hour (ACH in hr⁻¹). The measurements are within 85% of the model prediction, both for the warm upper as for the cold lower layer. The model overpredicts the CO concentrations for higher ventilation volumes, a factor 2 for 1 ACH and a factor 4 for 5 ACH. They suggest to include a parameter that describes the amount of exhaust gas that is directly removed. The idea is that high ventilation increases the pressure on the warm upper layer and more exhaust gas is removed than expected from air ventilation alone. That suggestion is followed by introducing a factor f_{lost} representing the fraction of exhaust gas that is immediately lost.

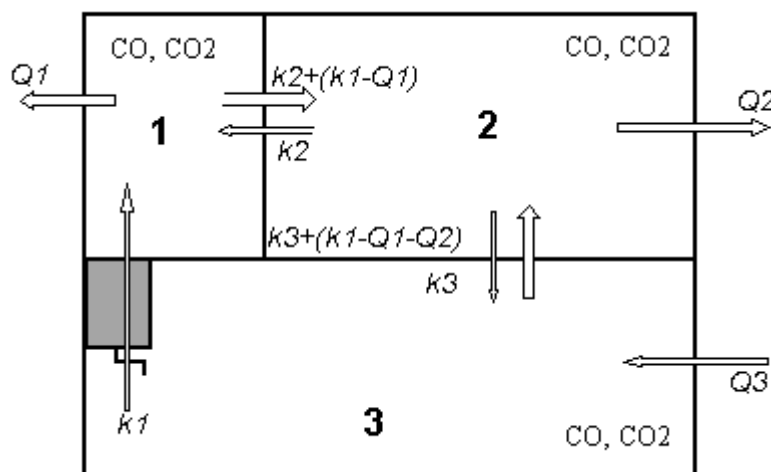


Figure 4. Scheme of the CO/CO₂-model.

A single room is subdivided in three layers when the burner is switched on. Layer 1 and 2 warm layers separated from the cold layer 3. Exchange is by air flow. Parameters Q define the air ventilation flow, parameter k_1 is the flow of exhaust gas and parameters k_2 and k_3 define air flow mixing between air layers.

These considerations lead to a three compartment model for both CO and CO₂ (see fig. 4), which is numerically solved by CONSEXPO by a fourth order Runge-Kutta method. Because the CO and CO₂ concentrations differ for the different layers, the direction of air flow matters. Therefore, the following boolean variables are defined, which are 1 if the condition following the = is true and 0 otherwise.

$$I_1 = k_1 > Q_1$$

$$I_2 = k_1 - Q_1 > Q_2$$

In fact, the variables I define direction of air flow by calculating the net flow of air.

For CO₂, the following mass balance equations apply, where subscripts 1,2, and 3 refer to the compartment as depicted in figure 4.

$$V_1 \frac{dC_1^{CO_2}}{dt} = (1 - f_{lost})S^{CO_2} + k_1 C_3^{CO_2} + k_2 (C_2^{CO_2} - C_1^{CO_2}) - I_1 k_1 C_1^{CO_2} - (1 - I_1)((k_1 - Q_1)C_2^{CO_2} + Q_1 C_1^{CO_2})$$

$$V_2 \frac{dC_2^{CO_2}}{dt} = I_1 (K_1 - Q_1) C_1^{CO_2} + (1 - I_1)(K_1 - Q_1) C_2^{CO_2} + k_2 C_1^{CO_2} + f_3 k_3 C_3^{CO_2} - (k_2 + f_3 k_3) C_2^{CO_2} - I_2 (k_1 - Q_1) C_2^{CO_2} - (1 - I_2)((k_1 - Q_1 - Q_2) C_3^{CO_2} + Q_2 C_2^{CO_2})$$

$$V_3 \frac{dC_3^{CO_2}}{dt} = I_2 (k_1 - Q_1 - Q_2) C_2^{CO_2} + (1 - I_2)((k_1 - Q_1 - Q_2) C_3^{CO_2}$$

$$+ f_3 k_3 C_2^{CO_2} - (k_1 + f_3 k_3) C_3^{CO_2}$$

$$f_3 = e^{-0.02t_0}$$

For CO, the equations follow the same mass balance as the CO₂ equations.

$$V_1 \frac{dC_1^{CO}}{dt} = (1 - f_{lost})S^{CO} (C_3^{CO_2}) + k_1 C_3^{CO} + k_2 (C_2^{CO} - C_1^{CO}) - I_1 k_1 C_1^{CO} - (1 - I_1)((k_1 - Q_1)C_2^{CO} + Q_1 C_1^{CO})$$

$$V_2 \frac{dC_2^{CO}}{dt} = I_1 (K_1 - Q_1) C_1^{CO} + (1 - I_1)(K_1 - Q_1) C_2^{CO} + k_2 C_1^{CO} + f_3 k_3 C_3^{CO} - (k_2 + f_3 k_3) C_2^{CO} - I_2 (k_1 - Q_1) C_2^{CO} - (1 - I_2)((k_1 - Q_1 - Q_2) C_3^{CO} + Q_2 C_2^{CO})$$

$$V_3 \frac{dC_3^{CO}}{dt} = I_2 (k_1 - Q_1 - Q_2) C_2^{CO} + (1 - I_2)((k_1 - Q_1 - Q_2) C_3^{CO}$$

$$+ f_3 k_3 C_2^{CO} - (k_1 + f_3 k_3) C_3^{CO}$$

$$S^{CO} ([CO_2]) = S_0^{CO} e^{3([CO_2] - \tau\%)^2}$$

The parameters that appear in the model equations are:

S^{CO_2} : the production of CO₂ (mg/min);

S^{CO} : the production of CO (mg/min);

f_{lost} : fraction exhaust gas immediately lost;

k_1 : airflow through the burner (cm³/min), determined by its kilowattage;

k_2 : exchange rate between compartment 1 and 2 (cm³/min);

k_3 : exchange rate between compartment 2 and 3 (cm³/min);

Q_1 : ventilation rate of compartment 1 (cm³/min);

Q_2 : ventilation rate of compartment 2 (cm³/min);

Q_3 : ventilation rate of compartment 3 (cm³/min);

V_1 : volume of compartment 1 (cm³);

V_2 : volume of compartment 2 (cm³);

V_3 : volume of compartment 3 (cm³).

CONSEXPO asks for the following parameters to quantify the model. These define all model parameters as defined in the above.

CO production. The production of CO depends on the concentration of CO₂ in the air. At low CO₂ concentration, CO is produced at basic levels. At a certain CO₂ concentration, CO production quickly rises. Two parameters describe the CO production function, the CO production constant and the CO asymptote. The function is a quadratic hyperbolic function:

$$S^{co}([CO_2]) = \frac{k_{prod}}{L - [CO_2]^2}.$$

Regrettably, this function is burner specific and more research is needed to outline generalisations. The curve is routinely measured during safety checks of new burners.

CO production constant k_{prod} . The production rate of CO at a CO₂ concentration where $L - [CO_2]^2 = 1$.

CO asymptote L . The CO₂ level (measured as squared %) that acts as asymptote for the CO production rate.

Fraction directly lost. The fraction of exhaust gas (that is both CO and CO₂) that is directly lost after emission. Dijkhof, Bakker and Meuleman (1999) give the following table based on experimental findings:

Air Changes per Hour (hr ⁻¹)	fraction direct lost	mix upper/lower (m ³ /hr)
0.5	0.15	25
1	0.30	17
2	0.50	7
3	0.65	3
4	0.70	1
5	0.75	0

These values have been measured for a kitchen of 15 m³, no validation for other room sizes has been attempted. Dijkhof, Bakker and Meuleman (1999) also remark that the fit of the model improves when the mixing between upper and lower layer reduces for increasing ventilation volumes. These data are added in the table.

Room volume. Volume of the room where exposure takes place, including all layers of the above mentioned

Room surface. Surface of the room. Room volume and room surface together determine the room height.

Outlet height. The height of the outlet of the burner, where exhaust gas enters the room air.

Mixing rate upper layers. A mixing factor which determines how well both upper layers are mixed by exchange of air.

Mixing upper/lower layer. A mixing factor which determines how well the upper and lower compartment, number 2 and 3 respectively, mix by exchange of air. The mixing factor as given here is the base factor at a zero temperature gradient. The model assumes an exponential decrease of mixing by an increasing temperature gradient, with a half life of 30 minutes, as observed in experiments (Dijkhof, pers. comm. 1997).

kW Burner. The kilowattage of the burner.

Exhaust ventilation. The outward directed ventilation in the air compartment just above the burner (compartment 1).

Upper ventilation. The outward directed ventilation in the upper air compartment next to the burner (compartment 2).

Painting. The scenario predicts the exposure to chemicals evaporating from paint applied to a surface in a single room. The model is schematically represented in figure 4 and described in full by Van Veen et al (1999). The painted surface is subdivided in two layers, the upper one exchanges the compound with air, the lower one acts as a store. The “Painting” scenario models a finite amount of compound in the paint, in contrast to the “Evaporation from Mixture” scenario. In the “Painting” scenario, evaporation stops when the compound has disappeared from the paint.

The model has been validated by Van Veen et al. (1999; submitted) using organic solvent paint and monitoring n-alkanes in the range n-octane to n-undecane and using paint stripping with dichloromethane. In summary, the model predicts upper levels well, including peak concentrations and half life in the room, but for slowly evaporating chemicals as alkanes, it

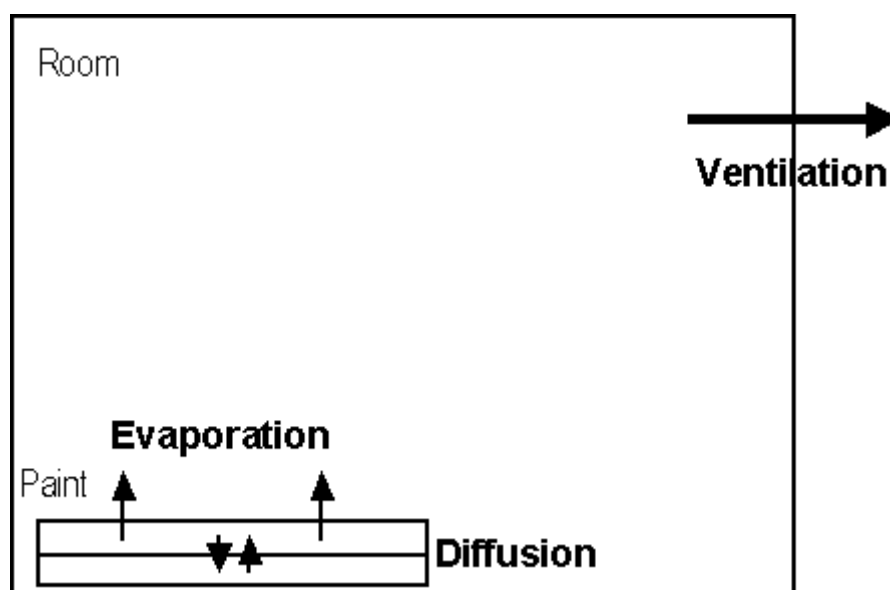


Figure 5. Schematic representation of the painting model.

has difficulties to predict the exact timing of the peak concentration.

The "Painting" scenario uses a Runge-Kutta fourth order numerical algorithm to solve the underlying differential equations. The algorithm is expected to converge for many parameter settings, but it may fail. The user is urged to check if the calculated time course does not contain any anomalies, before using summary measures.

The parameters used in the model are the following:

Release area. The painted area from which chemicals may evaporate.

Product amount. Amount of product used to paint.

Weight fraction. Weight fraction of the compound of interest in the paint.

Density product. Density of the paint.

Layer exchange rate. Exchange rate between the lower, reservoir layer and the upper layer of paint.

Fraction to upper layer. Fraction of paint applied to the upper layer during painting.

Room volume. Volume of the room.

Effective ventilation. Ventilation rate of the room.

Temperature. Room temperature. The paint is assumed to have the same temperature as the room.

Molecular weight matrix. Typical molecular weight of the "other" chemicals with relative low molecular weight in the paint.

Spray: well mixed model. The model describes indoor exposure to chemicals in spray droplets assuming that the droplets are well mixed in the room and no evaporation of the chemical occurs. The latter assumption reduces the air concentration to zero when all droplets are on the floor. If droplets are not well mixed but form a coherent cloud and if evaporation matters, select the spray: cloud model. If evaporation is quick, emission is just like the emission of vapour and the source and ventilation model is appropriate.

The air concentration C_{room} is calculated from (Reist, 1993: eq. 6.23-6.27)

$$V_{room} \frac{dC_{room}}{dt} = S - eC_{room} - QC_{room} .$$

The source term S of the droplets is an emission rate (amount per time) of droplets of given size. The removal rate e of droplets from the air compartment is set by calculating the terminal settling velocity from Stoke's law (Reist, 1993). The removal rate of aerosol droplets is calculated as $e = v_t / H$, where v_t is the terminal settling velocity and H the release height. The terminal settling velocity is calculated from $v_t = r^2 \rho g / 0.00329$ cm/s (Reist, 1993: equation 6.5 and 6.10), where r is droplet radius, ρ is formulation density, g is gravity and 0.00329 a compilation of air viscosity and a constant 18. Removal by ventilation is driven by ventilation rate Q .

The parameters in the model are the following:

Generation rate formulation. The amount per time of formulation emitted by the product.

Weight fraction. The weight fraction of chemical in product.

Airborne fraction. The fraction of formulation that enters air as aerosol droplets. The complement of this fraction is supposed to deposit on a surface.

Density. Density of the formulation or product

Room volume. Volume of the room.

Effective ventilation. Ventilation rate of the room.

Droplet size. Size of the droplet, assume the droplet is a sphere.

Release height. Height at which the droplets are released.

Spray: cloud model. The model describes exposure to an aerosol emitted by a spray can. The model assumes that the spray can produces a coherent cloud of spray droplets and that the chemical may evaporate from droplets and target area. The coherent cloud of spray droplets divides the room in two compartments: a compartment that just contains the cloud of droplets and a compartment that contains the rest of the room. Exposure to spray droplets can only occur in the cloud compartment. Exposure to evaporated chemical can occur in both the cloud and the remaining room compartment.

In the model, the user will be exposed to the cloud compartment, while the non-user is exposed to the remaining room compartment. At the moment, partial exposure to the cloud compartment is not implemented. The size of the cloud is calculated from the cloud radius and the release rate. These two measures are used to calculate a tight box around the cloud.

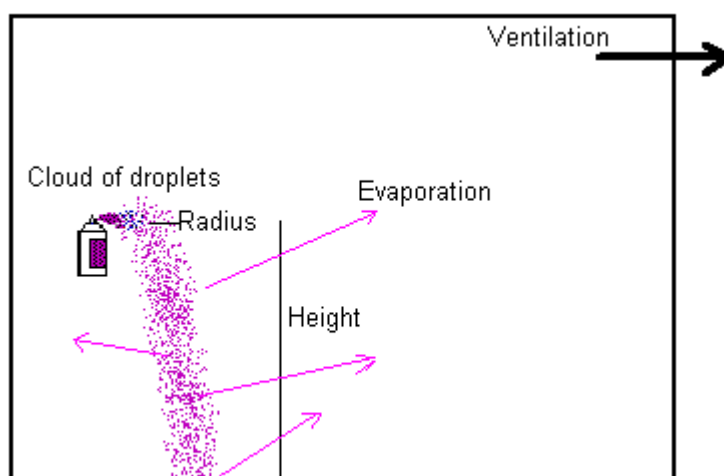


Figure 6. Schematic presentation of the Spray, cloud model.

The model is a compilation of the spray: well mixed model and the paint model. Droplet behaviour, i.e. settling, is defined as in the well mixed model, but droplets are confined to the cloud compartment. The evaporation rate is defined as in the paint model, using the surface of the droplets and the target area and taking into account that the concentration in the product or formulation decreases. The model assumes that droplets that hit the target evaporate into the room compartment, while droplets floating in the cloud evaporate to the cloud compartment. The amount of chemical in the cloud compartment is a summation of the amount in the droplets and the amount that has evaporated but is still in the cloud. The amount of chemical in the droplets is described by

$$V_{dr\ p\ et} \frac{dC_{dr\ p\ et}}{dt} = f_{air} S_{dr\ p\ et} (C_{pr\ du\ t} - C_{dr\ p\ et}) - K (P_{part,dr\ p\ et} - P_{act,cloud}),$$

where K , $P_{part,droplets}$, and $P_{act,cloud}$ are the exchange rate constant and vapour pressures for the chemical in droplets in the cloud, and are defined in the paint model (see Jayjock, 1994; Van Veen et al., 1999). The volume of droplets in air $V_{droplets}$ is given by

$$\frac{dV_{droplets}}{dt} = f_{air} S_{droplets} - e V_{droplets}$$

where $S_{droplets}$ is the generation rate of droplets, f_{air} is the fraction of droplets that becomes airborne, and e is the removal rate of droplets (as defined above in the well mixed model). The exact radius of the droplets depends on the solvent. If the solvent does slowly evaporate, the user given radius is used. If the solvent evaporates quickly, a new radius is calculated assuming that only the chemical remains. The evaporated amount in cloud air is

$$V_{cloud} \frac{dC_{cloud_air}}{dt} = K (P_{part,droplet} - P_{act,cloud}) - Q_{cloud} (C_{cloud_air} - C_{room}),$$

and the amount in the remaining room volume is

$$V_{room} \frac{dC_{room}}{dt} = K (P_{part,object} - P_{act,room}) + Q_{cloud} (C_{cloud_air} - C_{room}) - Q_{room} C_{room},$$

where the V_{cloud} and V_{room} refer to the cloud and room compartment volume respectively, Q_{cloud} and Q_{room} refer to the ventilation rate of the cloud and the room compartment respectively, C_{cloud_air} and C_{room} refer to cloud and room vapour concentrations of the chemical respectively, and K , $P_{act,room}$ and $P_{part,object}$ refer to room and object specific evaporation parameters (see paint model). The room volume is the total room volume from the dimensions of the room minus the cloud volume. The cloud ventilation rate is proportional to the room ventilation rate as

$$Q_{cloud} = \frac{V_{cloud}}{V_{room}} Q_{room},$$

although this may underestimate cloud ventilation (see Riley et al., 2000). Finally, the product or formulation forms a layer of volume V_{object} on the target. The volume of this layer increases

by $V_{object} = (1-f_{air}) * S_{droplet} * t$, where t is time. The amount of chemical in the layer on the object is described by

$$V_{object} \frac{dC_{object}}{dt} = (1 - f_{air}) S_{droplet} (C_{product} - C_{object}) + e V_{droplet} C_{droplet} - K (P_{part,object} - P_{act,room})$$

using parameters defined in the above.

The parameters in the model can be summarised to be the following:

Generation rate formulation. The amount per time of formulation emitted by the product.

Density. Density of the formulation or product

Weight fraction. The weight fraction of chemical in product.

Airborne fraction. The fraction of formulation that enters air as aerosol droplets. The complement of this fraction is supposed to deposit immediately on a surface.

Droplet size. Size of the droplet, assume the droplet is a sphere.

Release height. Height at which the droplets are released.

Radius cloud. The initial radius of the cloud near the spray can.

Target area. The area from which chemicals may evaporate.

Room volume. Volume of the room.

Effective ventilation. Ventilation rate of the room.

Solvent evaporation. A switch to set if the solvent evaporates fast (approximated by immediately) or slow (approximated by not). For slowly evaporating solvents, the radius of the droplets is the user given radius. Otherwise, for fast evaporating solvents, the droplet is chemical only and the radius is proportionally decreased.

5.3.3. Inhalation uptake

To calculate the uptake of a compound in the lung, three models are available, the fraction model, the equilibrium flow model and the diffusion model. Background information on the models is given in Van Veen, Olling and Vermeire (1994). For particulate material, the nose and larynx act as filter (Freijer et al., 1997). Material deposited in this region is generally swallowed and enters the gastro-intestinal tract.

Fraction Model. The fraction model calculates the uptake rate as

$$U(t) = F Q_i R E(t).$$

The primary factor that expresses uptake in the foregoing equation is F the fraction taken up. It is multiplied with Q_i , the inhalation rate, R , the respirable fraction and $E(t)$, the exposure.

To calculate the total amount taken up, the integral over the duration of exposure T is taken

$$U_c = \int_T U(t) dt$$

The scenario contains the following parameters:

Contact duration (defined in the contact menu)

Inhalation rate. The volume of air that passes the lungs in a certain amount of time. The default value is based on the body weight that is defined in the Contact ->Human menu and the degree of activity. The default is calculated using Freijer et al. (1997) and ICRP (1994).

Absorbed fraction. Fraction of chemical that is absorbed in the body.

Respirable fraction. The fraction of the compound that enters the lung and is not deposited in the throat. the fraction $1-R$ is deposited in the throat and enters the oral route of uptake. A respirable fraction of 1 is valid for gaseous chemicals which are not deposited. For aerosols, the value is too high and should be adjusted according to the mean droplet size (fig. 7).

Exposure. Exposure is defined in the exposure-inhalation menu entry.

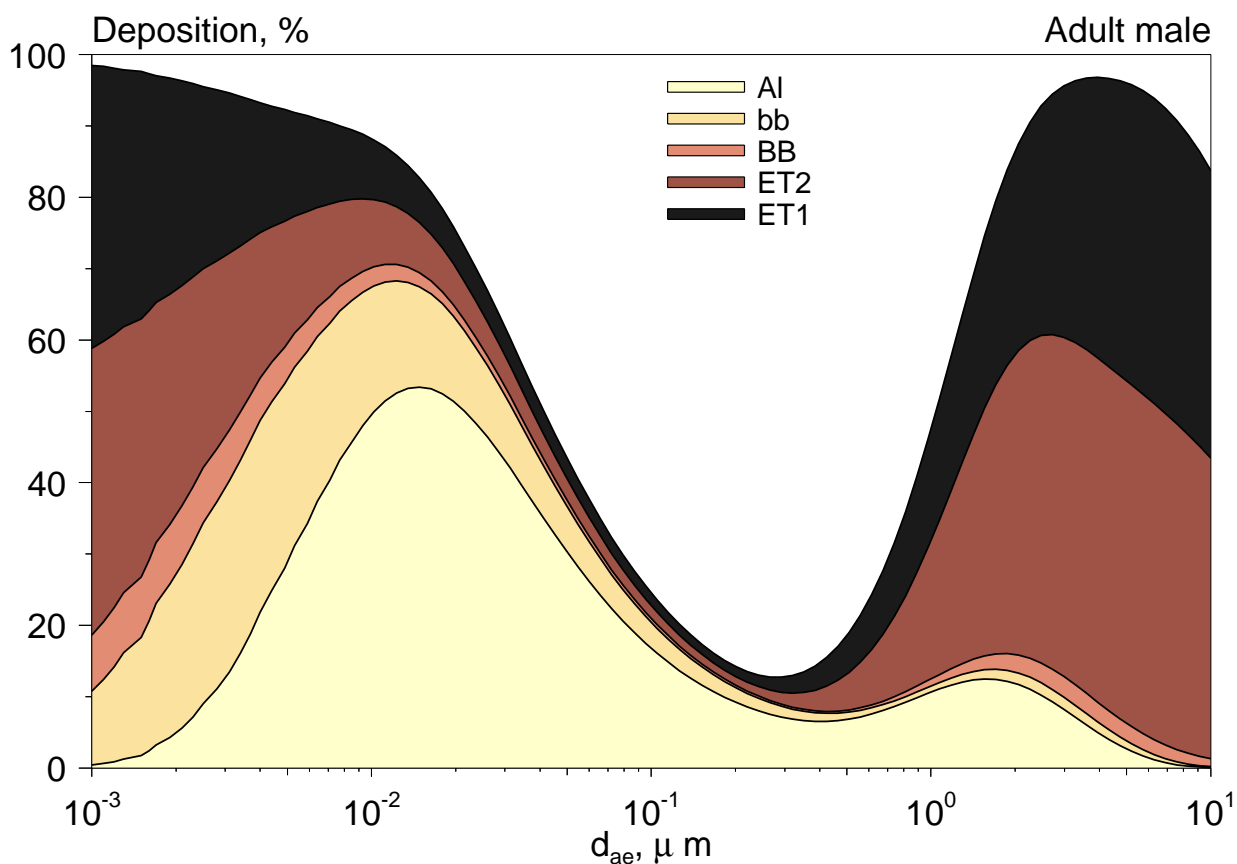


Figure 7. Deposition of aerosols in the lung tract (Freijer et al., 1997). The fraction that is not deposited in the extrathoracic airways, ET1 and ET2 in the figure, is considered to be the respirable fraction. Al=alveoli, bb=bronchioles, BB=bronchia, ET1=extrathoracic region 1, ET2=extrathoracic region 2.

Diffusion Model. The diffusion model is based on the concentration difference between the lung air and lung blood (Van Veen, 1996). Essentially, the uptake rate is defined as:

$$U(t) = A_{lung} P_{lung} (C_{lung}(t) - K_{ab} C_{blood}(t)),$$

where U is the uptake rate, A_{lung} is the area of the lung wall, P_{lung} is the permeability of the lung wall, C_{lung} is the compound concentration in lung air, K_{ab} is the air/blood partition coefficient, and C_{blood} is the compound concentration in lung blood. The uptake rate $U(t)$ is a function of time because both the lung air concentration C_{lung} and blood concentration B_{blood} vary in time. The underlying model is explained in detail by Van Veen (1996). It is assumed that there is no body burden of the compound, resulting in clean venous blood with a zero compound concentration.

The program calculates the amount of compound taken up from a single breath, and sums all breaths during the period of exposure. During a breath, when the air inside the lung forms a compartment that is relatively closed from the outside, the concentration in lung air decreases as a function of uptake, whilst lung blood takes up the compound from the lung air and is continuously diluted by inflow of clean blood.

The initial concentration in lung air, $C_{lung}(0)$, is calculated from the concentration in the ambient air and the fraction of lung air that is refreshed per breath. That fraction is approximately 0.25 (Silbernagel and Despopoulos, 1993). The initial average concentration in the lung, just after inspiration, is then approximated by:

$$C_{lung}(0) = \frac{V_e + (1-F)V_r}{V_e + V_r} C_{ambient}$$

where $C_{ambient}$ is the ambient concentration, F is the fraction of the compound taken up during a breath, V_e is the expired amount of air, V_r is the residual volume in the lung, and $V_e = 0.25V_{lung}$, where the volume of the lung $V_{lung} = V_e + V_r$.

The diffusion uptake model is based on the following parameters:

Air/Blood Partition Coefficient. The ratio between the equilibrium concentration of the compound in air and in blood.

Blood Flow. The flow of blood through the lungs.

Blood Volume. The volume of blood that is present in the lungs.

Lung Wall Permeability. permeability of the wall between the lung air and the lung blood, predominantly the permeability of the alveolar wall.

Lung Area: Area of the contact surface between lung air and blood.

Lung Volume: total volume of the lung.

Dead Space: fraction of lung air that is not involved with air/blood exchange.

Inhalation rate. The volume of air that passes the lungs in a certain amount of time. The default value is based on the body weight that is defined in the Contact -> Human menu and the degree of activity. The default is calculated using Freijer et al. (1997) and ICRP (1994).

Respirable fraction. The fraction of the compound that enters the lung and is not deposited in the throat. the fraction $1-R$ is deposited in the throat and enters the oral route of uptake. A respirable fraction of 1 is valid for gaseous chemicals which are not deposited. For aerosols, the value is too high and should be adjusted according to the mean droplet size (fig. 6).

Flow Model. The flow model is based on equilibrium exchange between a compound in the lung air and the lung blood. This involves the air/blood partition coefficient and the blood flow as transport determining parameters. The permeability of the lung wall P_{lung} is assumed to be very large, such that passage of the lung wall is by far not the rate limiting step. It is also assumed that there is no body burden of the compound, resulting in venous blood with a zero chemical concentration. This assumption will overestimate the amount taken up. The model is used and described by e.g. Ramsey and Anderson (1984). It expresses the fraction taken up as:

$$F = \frac{K_{ab}}{K_{ab} + Q_{lung}/Q_{blood}}$$

where the variables are already defined in the “Diffusion model” section. In fact, the parameters of the model are a subset of the parameters used in the diffusion model. Therefore, no separate input dialog has been made. Simply neglect the blood volume, lung volume, lung area, death space and permeability parameters of the diffusion model.

The parameters of the flow model are:

Air/Blood Partition Coefficient: The ratio between the equilibrium concentration of the compound in air and blood.

Blood Flow: The flow of blood through the lungs.

Inhalation rate. The volume of air that passes the lungs in a certain amount of time. The default value is based on the body weight that is defined in the `Contact -> Human` menu and the degree of activity. The default is calculated using Freijer et al. (1997) and using ICRP (1994).

Respirable fraction. The fraction of the compound that enters the lung and is not deposited in the throat. the fraction $1-R$ is deposited in the throat and enters the oral route of uptake. A respirable fraction of 1 is valid for gaseous chemicals which are not deposited. For aerosols, the value is too high and should be adjusted according to the mean droplet size (fig. 6).

5.4. Dermal route

Dermal contact with consumer products occurs for example when we handle things, when we spill fluids or when we contact products dissolved in water. Chemicals from the product will pass the skin and enter blood. Dermal exposure also occurs concurrently with inhalation exposure because our skin is always exposed to air. Therefore, setting inhalation exposure automatically sets a dermal exposure of the same magnitude. Uptake from exposure to volatile chemicals can only be calculated using the diffusion model of uptake.

In comparison to CONSEXPO 2, the migration screening model has been updated using Zeilmaker et al. (1999) and the transfer coefficient and contact rate models are added. The latter are regularly used for pesticide exposure assessment.

5.4.1. Dermal contact

The contact with a compound is defined using the `define` subentry of the `contact` menu entry, see section 5.2.

5.4.2. Dermal exposure

There are five exposure scenarios defined, and one scenario to model dermal exposure to airborne compounds. The "Fixed Volume" scenario assumes that the product is well mixed, and no diffusion gradients occur in the product. The name of the scenario refers to a second assumption, namely that the volume of product is constant during the time interval of exposure. The "Diffusion in Product" scenario assumes that the product is not mixed at all, and transport of a chemical compound takes place by means of diffusion. Then, a concentration gradient of the chemical will be formed inside the product. The third scenario, "Migration to skin", models dermal exposure as a result of migration of product to the skin. The "transfer coefficient" and "contact rate" scenarios have been added to facilitate biocide risk assessment. These scenarios are based on data that are typically available for exposure assessments. They may be useful for other products too.

Fixed Volume. The fixed volume scenario describes uptake from a fixed volume of product that contacts a certain area of skin. This fixed volume can be either a small volume that is spilled on the skin, or a large volume, contacted for example during dish washing. The finite volume of the product sets the maximal amount of compound that can be taken up to the total amount present in the product. The scenario assumes that the product is well mixed, and gradients inside the product do not occur. The exposure is given by:

$$E = \frac{w_f A}{V_{product} D}$$

where A is the amount of product, w_f is the weight fraction, D is the dilution and $V_{product}$ is the product volume.

The parameters to describe this model are:

Product density. Density of the product.

Volume of Product. the volume of the product that contacts the skin. If the dilution factor is set to some other value, this volume reflects the volume in which the product was contained before dilution.

Weight Fraction. the weight fraction of the chemical compound in the product. If the product is diluted before use, the weight fraction in the original product is used and the dilution factor is set. If you fill in the weight fraction in the diluted product, set the dilution to 1 to indicate that no further dilution takes place.

Dilution. the dilution factor. It is equal to 1 when no dilution occurs, values below 1 imply concentration of the product, and values above 1 dilution. If the weight fraction is determined before the product is diluted, set the dilution to the number of times that the product is diluted but if the weight fraction is that in the diluted product, set the dilution factor to 1.

Diffusion in Product. The “Diffusion in Product” scenario describes dermal exposure to and uptake from products for which the diffusion gradient in the product can not be neglected. This will often be the case for solid products and for liquid products with a high viscosity. In these cases, one has to model the gradient inside the product to be able to calculate the uptake. The diffusion model is developed in Van Eijkeren (in prep.). The present model also takes the possibility into account that evaporation of the chemical compound decreases the exposure. The diffusion gradient inside the product is described by:

$$\frac{\partial E(x,t)}{\partial t} = D \frac{\partial^2}{\partial x^2} E(x,t)$$

where D is the diffusion coefficient of the compound inside the product and $E(x,t)$ is the compound concentration in the product at depth x and time t . At the interface between product and skin, $x = 0$. At the product/air border at $x=H$, the loss of material from the product is proportional to the concentration difference between the surface of the product and air

$$\phi_{air} = K_l (E(H,t) - C_a(t))$$

where ϕ_{air} is the evaporation rate to air, K_l is the exchange coefficient, $E(H,t)$ is the compound concentration in the product at the interface, and $C_a(t)$ is the air concentration. Momentarily, the air concentration is supposed to be zero.

At the product/skin border, the uptake is governed by the concentration difference between product and skin blood, the skin itself acting as a resistance between product and blood

$$\phi_{skin} = P_d (E(0,t) - K_{pb} C_{blood}(t))$$

where ϕ_{skin} is the dermal uptake rate, P_d is the dermal permeability, $E(0,t)$ is the concentration in product at the skin border, K_{pb} is the product/skin partition coefficient, and $C_{blood}(t)$ is the dermal blood concentration.

The equations are numerically solved using a second order Runge-Kutta algorithm. In order to use this algorithm, the user has to provide the number of segments into which the product is divided during the calculations. The default of 5 segments will do in most circumstances. By modelling the diffusion gradient inside the product explicitly, while modelling the skin simply as a resistance, one implies that the permeability of the skin for the compound is much larger than the permeability of the product for the compound. If not, the compound is more slowly transported by the skin and concentration gradients inside the product are of less importance.

The parameters in the scenario are:

Concentration compound. The concentration of the chemical compound in the product.

Diffusion product. The diffusion rate of the chemical compound in the product.

Evaporation rate constant. The exchange coefficient between product and air. It can be calculated by measuring the evaporation rate in weight per time, and dividing this value by concentration times exposed area.

Thickness product. The thickness of the layer of product, measured perpendicular to the skin.

Product segments. A parameter specifying into how many segments the product is divided by the numerical routine. If this number is very low, the gradient in the product is approximated by a few segments and the calculations can be inaccurate. Setting a very large number, however, slows down the calculations considerably. A number in between 10 and 50 will do for most products. Default: 5. Status of default: allows for quick calculations, which are not too inaccurate.

Migration to skin. Calculate dermal exposure by migration of a compound from a product onto the skin. The model calculates the amount that migrates as:

$$A_{migrate} = A_{chemical} WF_{skin}$$

where $A_{migrate}$ is the amount that migrates (g), $A_{chemical}$ is the fraction of chemical that is leachable (g/g) and F_{skin} is the skin contact factor (Zeilmaker et al., 1999). The skin contact factor is the fraction of product that is in direct contact with bare skin.

The parameters of the model are:

Leachable weight fraction. The amount of chemical in grams that can be leached from one gram of product.

Product amount. The weight of the product.

Skin contact factor. the fraction of product that is in direct contact with bare skin.

Contact rate. The contact rate describes dermal exposure by describing addition of product or formulation to the skin. It is a multiplication of the rate of dermal contact with the product or formulation, the weight fraction of the chemical and the density of the product or formulation. The contact rate is valid for the application phase and is, per definition, zero for the post application phase. The amount of chemical that reaches skin is $A_{dermal} = f_{weight} * R * t$, where A_{dermal} is the total amount on skin, f_{weight} is the weight fraction of chemical, ρ is the density of product/formulation, R is the contact rate and t is the use duration. The concentration of chemical on the skin is $C_{dermal} = f_{weight} * \rho$.

The parameters of the model are:

Contact rate. The amount of chemical in grams that can be leached from one gram of product.

Weight fraction. the weight fraction of the chemical in the product.

Product density. Density of the product.

Transfer coefficient. The transfer coefficient is a coefficient that is derived from data on dislodgeable amounts on surfaces and dermal loading on skin. The coefficient describes the area that is completely cleared with respect to the dislodgeable amount of chemical per unit of time. In addition to the transfer coefficient, input on the dislodgeable amount of formulation, the weight fraction of chemical, and the duration of contact are necessary. In addition, the total contaminated surface restricts the area that contains the dislodgeable chemical. The half-life of the chemical accounts for the decrease of chemical in time due to chemical transformations and break-down. The calculation is

$$A_{dermal} = TC \cdot A_{dislodge} \cdot \int_{t_{start}}^{t_{end}} f_{weight}(t) dt ,$$

where A_{dermal} is the total amount on skin, $f_{weight}(t)$ is the weight fraction of chemical at time t , $A_{dislodge}$ is the dislodgeable amount of formulation per unit area, TC is the transfer coefficient in area per unit of time and t is the contact duration. For $f_{weight}(t)$, simple exponential decrease is assumed based on the chemical half-life $t_{1/2}$ as

$$f_{weight}(t) = f_{weight}(0) e^{-\frac{0.693147}{t_{1/2}} t} .$$

The parameters of the model are:

Transfer coefficient The area that is wiped free of the dislodgeable amount of product by skin contact per unit of time.

Dislodgeable amount. The amount of product per surface area that may potentially be dislodged.

Weight fraction. the weight fraction of the chemical in the product.

Half life chemical. The half life of the chemical in the product as present on a surface. The parameter accounts for break down of the chemical.

Surface. Surface area that is contaminated with the product. This parameter sets a maximum on the surface that can be wiped free of the dislodgeable product.

5.4.3. Dermal uptake

Three models can be used to describe the uptake of a compound from the product, the fraction model and the diffusion model. The fraction model is a simple model, when knowledge about the product is scarce. The diffusion model is a more advanced model, which uses the concentration difference between the product and the blood in the skin (Van Veen, 1996). The SKINPERM model is taken from the work of Ten Berge and Wilschut (see Wilschut, 1995; Wilschut et al, 1995). In the latter two models, the uptake is proportional to this concentration

difference, with the skin permeability as the proportionality coefficient. In case of exposure to gases or vapours, the diffusion equation is simplified by assuming that the blood concentration of the compound is negligible. In the latter case, the uptake rate is proportional to the concentration of the compound in air.

The skin permeability can be estimated by empirical formula's which use the K_{ow} and the molecular weight to predict permeability. Six of these empirical formula's have been implemented in the program, those from Fiserova-Bergerova et al. (1990), Guy and Potts (1992), McKone and Howd (1992), Robinson (pers. comm.), Wilschut et al. (1995), and Bogen (1995). The equations for the dermal permeability P_d are derived from the octanol/water partition coefficient K_{ow} and the molecular weight MW :

1. Fiserova-Bergerova (1990)

$$P_d = \frac{1}{15} (0.038 + 0.153 K_{ow}) e^{-0.016 MW} \text{ cm / hr}$$

2. Guy and Potts (1992)

$$P_d = 0.0018 K_{ow}^{0.71} e^{-0.014 MW} \text{ cm / hr}$$

3. McKone and Howd (1992)

$$P_d = MW^{-0.6} \left(0.33 + \frac{h}{0.0000024 + 0.00003 K_{ow}^{0.8}} \right)^{-1} \text{ cm / hr}$$

where h is the thickness of the skin, taken as 0.0025 cm.

4. Robinson (Wilschut et al., 1995)

$$P_d = \frac{1}{1/(P_{sc} + P_{pol}) + 1/P_{aq} + 1/P_{cap}} \text{ cm / hr}$$

$$P_{pol} = 10^{-6} \frac{300}{\sqrt{MW}}$$

$$\log P_{sc} = -2.74 + 0.62 \log K_{ow} - 0.0054 MW$$

$$P_{aq} = 0.15 \frac{300}{\sqrt{MW}}$$

$$P_{cap} = 0.93(1 - e^{-P_{cw}A/F}) \approx 0.93,$$

where P_{sc} is the permeability of the, hydrophobic, stratum corneum, P_{pol} is the permeability of the hydrophilic (or polar) pathway through the stratum corneum, P_{aq} is the permeability of the epidermis, P_{cap} is the permeability of the capillaries, P_{cw} is the permeability of the capillary wall, A is the surface area of capillary wall and F is the capillary blood flow.

5. Ten Berge, as defined in Wilschut et al. (1995)

$$P_d = \frac{1}{\frac{1}{P_{psc} + P_{pol}} + \frac{1}{P_{aq}}} \text{ cm / hr}$$

$$\log P_{psc} = -1.326 + 0.6097 \log(K_{ow}) - 0.1786 MW^{0.5}$$

$$P_{pol} = \frac{0.0001519}{\sqrt{MW}}$$

$$P_{aq} = \frac{2.5}{\sqrt{MW}}$$

6. Bogen (1995)

$$\log P_d = -0.812 - 0.0104 MW + 0.616 \log K_{ow}$$

Wilschut et al. (1995) evaluated most empirical equations, except number 4 and 6, against measured permeability's and reported that they predict the dermal permeability within approximately one order of magnitude.

Fraction Model. The fraction model uses the equation

$$U_c = VEF(t)$$

to calculate the total amount U_c taken up.

The definition of the parameters is:

V : volume of product. Defined in one of the exposure scenarios.

E : exposure. Defined with the dermal exposure menu entry.

$F(t)$: absorbed fraction. Fraction of the total amount of compound that is taken up by the body.

Diffusion Model. The diffusion model is based on the concentration difference between the product and skin blood (Van Veen, 1996). The uptake rate is defined as

$$U(t) = A_d P_d (E(t) - K_{pb} C_{blood})$$

where $U(t)$ is the uptake rate, A_d is the area of dermal contact, P_d the dermal permeability, K_{pb} is the product/blood partition coefficient, $E(t)$ is the compound concentration in the product and generally a complex function of time and C_{blood} is the compound concentration in blood. The two compartment model behind the uptake rate equation is described in detail in Van Veen (1996). Essentially, the concentration in the product and the concentration in the blood compartment underneath the skin form the compartments, and the uptake rate is the amount transferred from product to blood per unit of time. The concentration in the product decreases because of uptake, while the blood is continuously diluted by inflow of clean blood.

In case of exposure to airborne compounds, the uptake rate equation is simplified by assuming that the concentration in the blood compartment is negligible in comparison to the air concentration. In that case, the uptake rate is given by

$$U = A_d P_d E(t).$$

The parameters which are used in this model are the following:

Exposed Area. The skin area exposed to the product.

Blood Volume at Exposed Area. The volume of blood underneath the area of exposure. Default: depends on the exposed area.

Skin Blood Flow at Exposed Area. the blood flow through the skin at the site of exposure.

Partition Coefficient Product/Blood. the partition coefficient is the ratio between the equilibrium concentrations in the product and in blood. In case of aerial exposure, product can also be air. If the product is dissolved in water a value of 1 is recommended because blood is also a solution in water.

Permeability Skin. a rate parameter which defines how fast the skin is passed. It can be estimated from the molecular weight and the octanol/water partition coefficient, both to be set in the Compound menu entry. The dermal uptake dialog allows for selecting an estimation equation for the permeability, or to set your "own value". The empirical equations to estimate the permeability have been discussed in the above.

SKINPERM model. The SKINPERM model is described in detail in Wilschut (1995) and most of the underlying theory in Wilschut et al. (1995). SKINPERM is a diffusion model, but is simplifies the blood concentration to zero. Therefore, parameters relating to body blood are not relevant and the SKINPERM model only uses the area of contact and the permeability to calculate uptake. The uptake equations as given in the diffusion model simplifies to

$$U(t) = A_d P_d E(t),$$

where all parameter have been defined in the previous paragraph.

The CONSEXPO 3 program only contains the base version of SKINPERM. For the full program, refer to the program as ditributed by Ten Berge (contact via ECETOC).

The parameters which are used in this model are the following:

Exposed Area. The skin area exposed to the product.

Permeability Skin. A rate parameter which defines how fast the skin is passed. It can be measured or estimated from the molecular weight and the octanol/water partition coefficient, both to be set in the Compound menu entry. The dermal uptake dialog allows for selecting an estimation equation for the permeability, or to set your "own value". The empirical equations to estimate the permeability have been discussed in the above.

5.5. Oral route

Oral exposure and uptake from consumer products will occur when products are

swallowed. There are two main categories of products that enter the body this way. Firstly, there is accidental swallowing of products like toothpaste, which are used in or around the mouth. Secondly, droplets or dust in the air will be partly deposited in the throat during inhalation. This fraction will be swallowed after a while. The program is neither intended to estimate exposure to chemicals in food (see e.g. Slob, 1993; Heisterkamp en Olling, 1996, for an overview of food exposure estimation) nor to estimate the acute, local effects of corrosive or reactive products.

5.5.1. Oral contact

The contact with a compound is defined using the `define` subentry of the `contact` menu entry, see section 5.2.

5.5.2. Oral exposure

There are four single exposure scenarios to describe oral exposure. The “Single Ingestion” scenario describes uptake resulting from ingestion of some amount of product. The “Hand-Mouth” scenario uses a macro-behaviour approach to describe hand-mouth contact. The “Leaching from product” and “Article migration” scenarios both describe leaching. For the former, leaching occurs in the mouth, for the latter it occurs to a product or food item that is eaten afterwards. If the respirable fraction, defined in inhalation uptake, is smaller than 1, a part of the inhaled particles is swallowed, causing an oral exposure to be present in the reports.

Single ingestion. The scenario describes uptake from an amount of product that is swallowed. The compound is taken up from this limited amount, which sets the maximal amount of compound that can be taken up to the amount initially present in the product.

The concentration is given by:

$$E = \frac{w_f q}{DV_{product}}$$

where q is the amount of product, w_f is the weight fraction, D is the dilution and $V_{product}$ is the product volume.

The parameters which describe this scenario are:

Product Density: the density of product that is swallowed.

Applied Volume: the volume of product that is swallowed. In case the dilution is set to 1, this is the actual volume that is swallowed. In case the dilution is set to some other value, it is the volume of the product before dilution.

Weight Fraction. the weight fraction of the chemical compound in the product. If the product is diluted before use, the weight fraction in the original product is used and the dilution factor is set. If you fill in the weight fraction in the diluted product, set the dilution to 1 to indicate that no further dilution takes place.

Dilution. the dilution factor. It is equal to 1 when no dilution occurs, values below 1 imply concentration of the product, and values above 1 dilution. If the weight fraction is determined before the product is diluted, set the dilution to the number of times that the product is diluted but if the weight fraction is that in the diluted product, set the dilution factor to 1.

Hand-mouth contact. The scenario is used to quantify oral exposure originating from dermal exposure on the hands and subsequent hand-mouth contact. It is automatically selected when a dermal exposure is present. The scenario asks for the exposure concentration, and calculates intake from concentration times medium intake rate times use duration.

The parameters of the model are:

Concentration. The concentration, mass per volume, in the product on the hands. The program also allows input of a mass per mass (mass %), but effectively a density of 1 g/cm³ is assumed for the conversion.

Ingestion rate. The ingestion rate, volume per time, of the product.

Leaching from product. Calculate oral exposure by leaching of a compound from a product into the mouth. The scenario is, for example, applicable to teething. The model calculates the concentration in the product as:

$$E(t) = E_0 e^{-\frac{RA}{E_0 V} t}$$

E_0 = initial concentration in product (mg/cm³)

R = initial leaching rate (mg/cm²/minute)

A = area of contact (cm²)

V = volume of product (cm³)

t = contact duration (minute)

The ingested amount of the compound upto time t is calculated from the difference between the initial concentration and the concentration at time t as:

$$I = V(E(0) - E(t))$$

The parameters in the model are:

Concentration. The concentration in the product.

Product volume. The volume of the product.

Leach rate. The leach rate sets the initial leach rate from the product, as measured for example in laboratory conditions. It is measured in amount leach per time per surface area.

Area. The area in contact with the mouth.

Article migration from product to food. The scenario has been set up to screen the migration of a compound from packaging material to food. The model follows the EU Technical Guidance Document (1996), where the amount available for migration is calculated by the concentration of the compound in the product times contact surface times the thickness of the product layer from which migration may occur. The actual migration is determined by a migrated fraction, calculated from the migration rate times the exposure duration.

The parameters in the scenario are:

Article concentration. The concentration of the compound in the article (packaging material) in contact with the product.

Wall thickness. The amount of article material in contact with the product, measured by the depth of the article from which the compound may leak into the product.

Wall area. Area of the article in contact with the product.

Product volume. Volume of product present in the article.

Migration rate. Migration rate of the product, given as a rate constant per time. The migration rate times the exposure duration will define the fraction of compound that has migrated into the product.

Ingested product volume. The amount of product actually ingested. May be equal to the product volume, but is may be less.

5.5.3. Oral uptake

Two models can be chosen to describe the uptake from the lumen of the gut into the blood, the fraction and the diffusion model. Because of the lack of available parameter value estimates, active uptake is excluded from the models and only passive diffusion is considered in the diffusion model. There are two variants of the diffusion model, the mixing tank model and the complete radial mixing model. The choice between these variants is made in the uptake definition dialog.

Fraction Model. The fraction model uses the equation $Uptake = V * E * F$ to calculate the amount taken up.

The definition of the parameters is:

V: volume of product. Defined in one of the exposure scenarios.

E: exposure. Defined with the oral exposure menu entry.

F: absorbed fraction. Fraction of the ingested amount of compound that is taken up by the body.

Please mark the difference between fraction taken up and bioavailability. In the latter case the first pass effect is included, which is not included in the fraction taken up.

Diffusion Model. The diffusion uptake model of the intestinal tract is based on

a tube model proposed by Sinko, Leesman and Amidon (1991). In this model, the intestine is described as a long tube. Two variants of the model can be used in the program: the complete radial mixing model and the mixing tank model. The complete radial mixing model assumes that the product travels through the intestine and releases the compound radially into the wall of the gut. The mixing tank model assumes that the intestine is one well mixed compartment from which uptake occurs. Generally, the complete radial mixing model is a better approximation of the gut and tends to result in a larger fraction taken up.

Both models can be expressed in terms of an absorption number A_n :

$$A_n = \frac{LP_e}{Rv}$$

where L is the length of the gut, P_e is the overall permeability of the gut wall, R is the radius of the gut, and v is the mean axial fluid velocity in the gut. Using the assumptions for the mixing tank model, the fraction taken up is expressed as:

$$F = F_{migr} \frac{2A_n}{1 + 2A_n}$$

where F_{migr} is the fraction of the compound that migrates from the product to the lumen of the gut and becomes available for diffusion. If the assumptions for the complete radial mixing model are used, the fraction taken up is expressed as:

$$F = F_{migr} (1 - e^{-2A_n})$$

Both models share their parameters, which are defined as follows:

Permeability. a rate constant intestinal wall permeation.

Migration to Lumen. the fraction of the compound that migrates from the product inside the intestine to the contents of the intestine. This parameter is included to allow for matrix effects.

Lumen Flow: The velocity of the intestinal contents, defining the flow through the lumen of the intestine.

Intestinal Blood Flow: The flow rate of blood in the wall of the intestine.

Intestine Length: The length of that part of the intestine where uptake takes place.

Intestine Radius: Radius of the small intestine.

6 Database

6.1. Introduction

CONSEXPO contains a database with defaults for models and parameters linked to types of products. The database is accessible by using the “Select Product Type” and “Select Chemical” buttons on the model overview. The database contains the following information.

1. Product types and for each product type default models and parameters. The product types categorise products according to exposure potency. The product types are available via the “Select Product Type” button, which results in a pick list for product types (fig. 8). First, a number of main categories are given. Then these main categories are subdivided into categories of similar exposure. Defaults are defined per category. The supporting data for the defaults are documented in fact sheets, published as RIVM reports. At the moment a general fact sheet (Bremmer and Van Veen, 2000a) and a fact sheet paint (Bremmer and Van Veen, 2000b) are finalised. When new fact sheets become available, the database is enlarged.

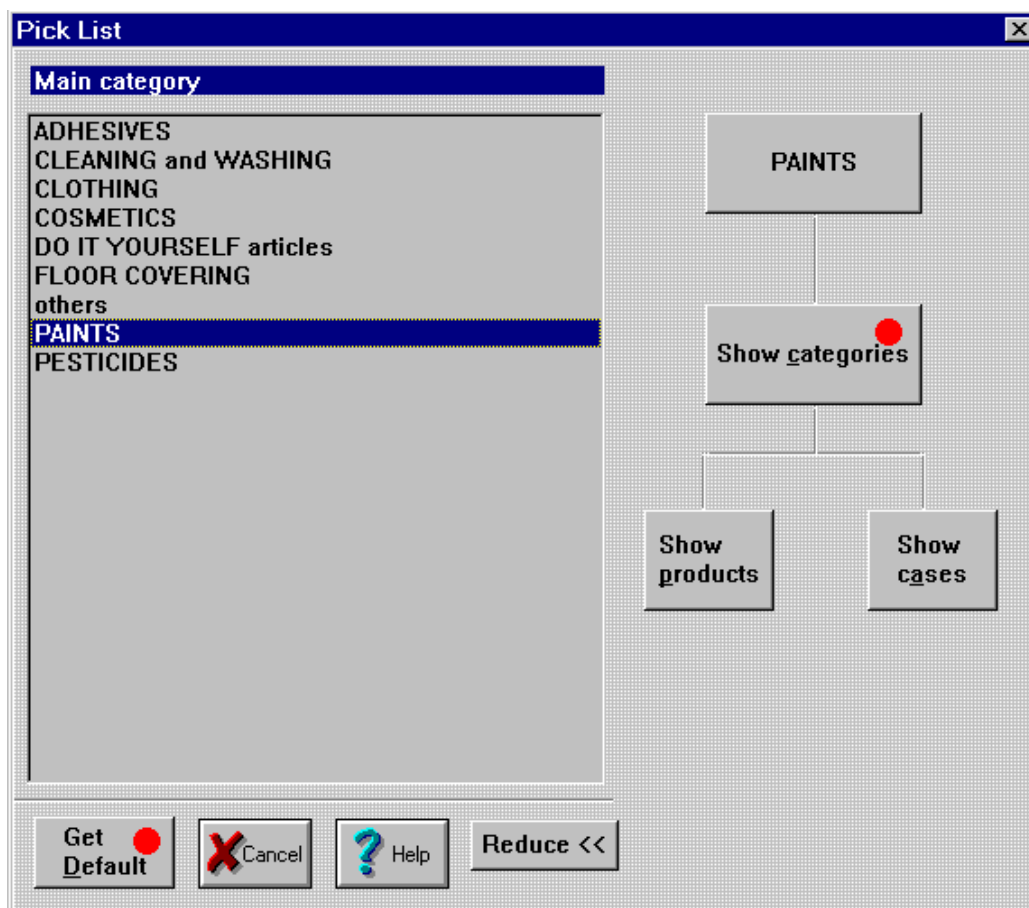


Figure 8. Product type selection dialog. The dialog is the interface between the database and CONSEXPO. Click on a main category to select it, then select a category and obtain defaults via the “Get Default” button (see dots).

2. Chemical information. The database can be filled with chemical information.

Not all parameters have default values. Typically concentration and weight fraction data are not available in the database. The model overview will signal missing parameters by the “par. missing” signal in the exposure/uptake and route matrix. The chemicals part of the database is sparsely filled with a couple of example chemicals.

CONSEXPO may use two sources for the database:

1. Local version. A local database is shipped with the product.
2. Network version. A network database such as Oracle or Ingres can be used as data source. The admittance to the network database is arranged via the Borland Database Engine and the Microsoft ODBC. Settings depend strongly on local server and network definitions. A CONSEXPO datamodel for database implementation is available from the author.

The selection for a particular data source is made via the `Options->System` menu choice. Checking the “Database is local” enables the local version. Additionally, fill in the path to the database files in the “DB directory” field. Unchecking “Database is local” assumes that the network is used. The DB directory field is not used in this case.

6.2. Disabled database

The database may be unavailable when:

- the Borland database engine is not (properly) installed
- the database files are not present in the database path;
- the database is incomplete;
- the database engine can not be initialised.

In this case, the database entries in CONSEXPO are grey and disabled.

If errors occur during database queries, the program will inform you with a message. Most messages speak for themselves. If an unspecified error occurs, most likely the database can not be reached (path ? files present ? password OK?).

7 Stochastic parameters

7.1. Introduction

Parameters are seldomly undisputed point values, but they tend to be disputed and they tend to follow a distribution of values. How to cope with these uncertainties and variabilities? First, what is the difference between uncertainty and variability? Variability is the notion that a parameter might follow a distribution of values instead of being a single value. A good example is body weight, which varies among persons, although the weight of a particular person can be accurately measured. Uncertainty describes how sure we are about a certain value or distribution. Long series of measurements have led to a good understanding of the distribution of body weight, reducing uncertainty about the shape of the body weight distribution. Uncertainty is quantified by specifying a distribution around the most likely value or by specifying a distribution for the mean and standard deviation of the parameter distribution.

The CONSEXPO program allows each contact, exposure, and uptake parameter to assume a single stochastic distribution, to express both variability and uncertainty of parameters. Therefore, it convolutes variability and uncertainty into one distribution. There are three predefined distributions available in the CONSEXPO program, the normal, lognormal and uniform distribution. In addition, measured data can be used to establish an empirical distribution. The type of distribution that is chosen to represent a particular parameter distribution severely affects the eventual distributions of exposure and uptake. The parameter distributions should as much as possible be based on measured data. If you guess the distribution of a parameter, then the distribution of the exposure or uptake will reflect this guess! Fortunately, more and more sources for parameter distributions become available, for example the exposure factors handbook of the AIHC (1994) and an increasing number of papers in Risk Analysis.

7.2. Worst case calculations

A well known approach in worst case exposure assessment is to take worst case estimates of the model parameters and to perform the calculations with these worst case parameter values (Fig. 9, worst case route). In CONSEXPO 3 this route can be chosen by selecting the worst case option in the exposure definition dialogs (these appear after selecting Exposure->Inhalation, Exposure->Dermal or Exposure->Oral). The exposure and uptake estimates taken from these calculations are referred to as worst case estimates.

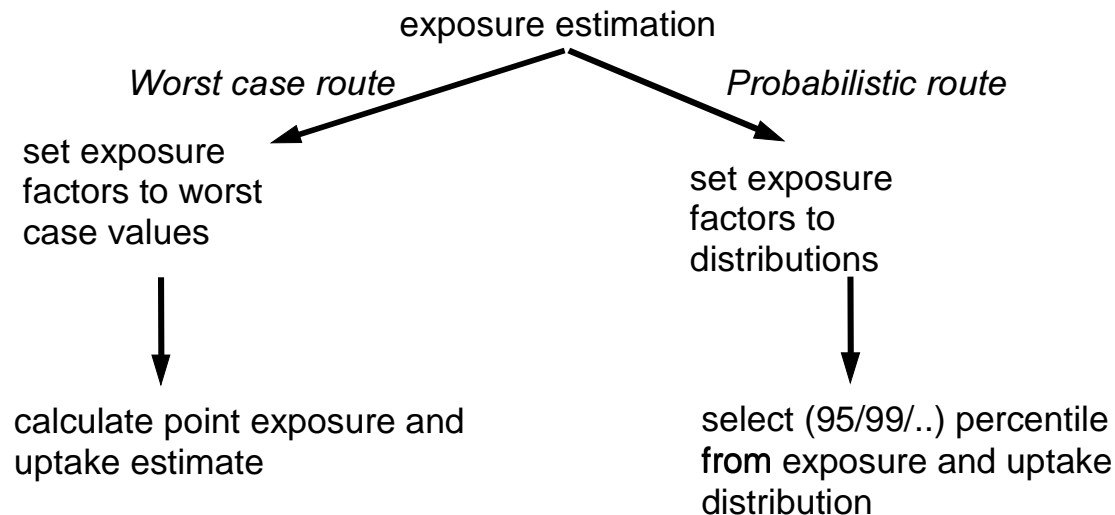


Figure 9. Routes for implementing a worst case approach in exposure modeling.

This approach has been nicknamed "cumulative worst case", because of a problem associated with the approach. Say there are two independent parameters, both having a probability distribution. If each of these parameters is set at its 95 percentile value, then the probability of exceeding that value is, per parameter, 0.05 . However, the probability to simultaneously exceed the 95 percentile values of both parameters is $0.05^2 = 0.0025$, 0.25% , assuming the parameters are uncorrelated. For n independent parameters, this probability is 0.05^n , a very small number if n is large. Thus, the combination of all parameters being at their 95 percentile values will seldom be met in the real world!

A typical result is that "safe values" derived from such a cumulative worst case estimate of exposure may be well below the background concentrations of the chemical. In order to deal with this problem, exposure assessors tend to use "reasonable worst case" estimates for the parameters: estimates that are conservative, but not too conservative. If a reasonable worst case estimate would be the 75 percentile, then the probability of two uncorrelated parameters simultaneously exceeding their 75 percentiles is $0.25^2 = 0.0625$, 6.25% . Still, 0.25^n is a small number if n is large.

A second approach to calculate worst case exposures and uptakes circumvents this problem (Fig. 9, probabilistic route). Firstly, uncertain and variable parameters are given an appropriate stochastic distribution. Then, these distributions are used to calculate the distributions of exposure and uptake. Once the exposure and uptake distributions are established, 95 percentile values from these distributions are taken. In contrast with the cumulative worst case situation, the probability of exceeding that exposure and uptake value is known, being 5% .

The benefit of being able to specify the probability of exceedance is gained at the cost of finding parameters distributions and calculating the distribution of exposure and uptake from the parameter distributions. In CONSEXPO, two approaches are used, the discrete probability approach and the Monte Carlo approach. The discrete probability approach assumes that exposure (and identically uptake) is given by a function $f(p)$ that depends monotonically on a parameter p . The exposure and uptake distributions are then calculated directly from the parameter distribution, without numerical calculations (see Van Veen (1995) for details). Calculations are relatively simple for a single parameter distribution. When multiple parameters attain a distribution, calculations quickly become tedious. The CONSEXPO program therefore applies this technique only when a single parameter attains a distribution. The second approach to propagate the distribution of the parameter through the exposure and uptake models is to use Monte Carlo simulation. First, all parameters that attain a distribution achieve a value randomly taken from their distribution. Then, exposure and uptake are calculated, using those parameter values. This process is repeated, typically in the order of 5000-10000 times. During the Monte Carlo simulation, as many exposure and uptake values as there are repetitions are gathered. The frequency histogram of these exposure and uptake values approximates the shape of the probability density functions of exposure and uptake. The more repetitions, the more accurate the approximation.

Using Monte Carlo simulation implies that a good random generator is needed. The one implemented in the program is the `ran1` random generator from Press et al. (1991). The procedure to transform the uniformly distributed values from this random generator into normally distributed values is also taken from Press et al. (1991). The program does not use latin hypercube sampling, a variation of the Monte Carlo technique. Latin hypercube allows for a much more efficient sampling of the parameter distributions, gaining insight into the exposure and uptake distributions in less iterations than the Monte Carlo approach. However, the same accuracy can be reached with Monte Carlo sampling, although the number of iterations has to be large.

7.3. Distributions

The program allows parameters to attain three standard distributions, the normal, lognormal and uniform distribution. The dialog to set the stochastic distributions is reached by selecting the parameter name in any of the parameter definition dialogs.

7.3.1. Normal distribution

The parameters in this program are all restricted to positive values. If their mean value and their standard deviation are given, and the standard deviation is much smaller than the mean (say, a coefficient of variation not larger than 20%), the normal distribution might be a good choice as parameter distribution. The normal distribution specifies a symmetric distribution around the mean.

7.3.2. Lognormal distribution

If a parameter is restricted to positive values, as e.g. concentrations are, and the standard deviation is of the same order of magnitude as the mean, the lognormal distribution might be a good choice. The lognormal distribution is described by the median and the coefficient of variation (C.V.). The median is the 50 percentile, the value that is exactly in the middle of the distribution. The coefficient of variation is the mean divided by the standard deviation.

7.3.3. Uniform distribution

If the only thing that is known about a parameter is a plausible lower and upper bound, the uniform distribution is a good choice. It assumes that every value in between the lower and upper bound has an equal probability of occurrence.

7.3.4. Empirical distribution

The empirical distribution is based on data. The program constructs a cumulative distribution from the data and samples from this distribution. The sampling will therefore only return one of the data points. Data are contained in a data file. The data file contains measured concentrations, the dimension of the concentrations and optionally comments. Each line of the file may contain either of the following:

- A dimension specifier, in the form of:

```
dim:xx
```

where xx is a valid dimension, i.e. one of the dimensions in the dimension box in the parameter dialog. Please adhere literally to these dimensions. A dimension specifier is obligatory.

- A concentration, which has to be a number starting on the beginning of the line.
- A multiple of concentrations, to specify a concentration that occurs more than once. Its specification is:

```
yy*zz
```

where yy is the number of occurrences and zz the concentration, e.g. 5*10.3.

- Each line not starting with a number and not containing 'dim:' is considered to be a comment. If the very first line contains a comment, this comment is displayed in a message box while reading the file. This comment can be used for a general identifier of the file.

Example:

```
Example data
dim:mg/kg
3
5.7
4*2.1
10.6
more comments
20.4
```

7.4. Displaying exposure or uptake distributions

Using the Distribution entry of the Report menu, exposure or uptake distributions can be drawn on the screen. The distributions are calculated and drawn for each route of exposure and uptake separately. If all parameters are point estimates, if there are parameters with out of range values or if there are parameters with missing values, no graph will be shown. If, during the generation of the distribution, only one parameter appeared to have variation, a point graph is composed, using the discrete probability function approach. If there are multiple parameters with variation, the Monte Carlo approach is used. A histogram displays the results of Monte Carlo calculations. The number of bars in the histogram, the number of points in the graph and the number of Monte Carlo loops can be changed in the `System` dialog in the `Options` menu.

7.5. Sensitivity analysis

The uniform parameter distribution and the procedures to display exposure and uptake distributions allow local sensitivity analysis. Sensitivity analysis tries to relate changes in parameter values to changes in the result. If a large change of a parameter value results in but a minor change of the outcome, the model is said to be insensitive to that parameter. If, on the other hand, a small change in a parameter value causes a large change in the outcome, the model is said to be sensitive to that parameter.

The uniform distribution is useful to analyse how sensitive exposure and uptake estimates are to small variations in the value of a single parameter. Instead of a point value, one of the parameters in the model is given a uniform distribution, to specify a small, symmetric interval around the point value. Then, the resulting distributions of exposure and uptake are calculated. From these distributions, the lower and the upper bounds are determined. Using the upper and lower bounds of the parameter too, the following measure S can be calculated

$$S = \frac{f(u) - f(l)}{u - l}$$

where $f(u)$ and $f(l)$ are the exposure or uptake function $f(p)$, using the upper bound u and lower bound l of the parameter. As one can verify, it is an approximation to $df(p)/dp$, the derivative of the model with respect to the parameter. This measure can be calculated for each of the parameters, setting a uniform distribution for each parameter in turn. To achieve a relative measure instead of an absolute one, S can be divided by the value of the result $f(p)$ at the point estimate of the parameter p

$$S_r = \frac{S}{f(p)} 100\%$$

The relative measure S_r facilitates comparison between models where the results differ in one order of magnitude or more.

These measures of sensitivity are only local measures. Firstly, all parameters achieve their best estimate and then each parameter achieves its sensitivity measure, the others being at their best estimate. In another assessment problem, where the best estimates of parameters differ, the parameter sensitivity measures may differ from the earlier estimates. A global sensitivity analysis, on the other hand, would determine the sensitivity of a model for parameters regardless of the value of others. This is not possible with the present program.

8 Tutorial

The use of CONSEXPO 3 will be demonstrated with the following exposure situation:

Assume someone is cleaning his bicycle with a product that contains 50% tetrachloroethane as a solvent. The person cleans the bike inside a room which is ventilated. The can with the solvent is left open in the room. Question: What is the exposure to tetrachloroethane from the can and how much of it is taken up in the person cleaning the bike ?

8.1. Step 1

Now you are ready to use the program.

8.2. Step 2

Select the "Select Chemical" button on the model overview. In the dialog that appears, you have to define the chemical compound of interest.

The characteristics of tetrachloroethane are:

- Molecular weight: 167.85 g/mol;
- Log Octanol/water partition coefficient: 2.39 (10log);
- Vapour pressure: 5.95 mm Hg.

If the dimension of the dimension box is not the dimension you need, click on the arrow in the dimension box, and choose the appropriate dimension. Leave the water solubility blank. Now, Choose "Ok" to accept the compound parameters.

The Retrieve button is only available when you are connected to the CONSEXPO database.

Now, the compound is defined.

8.3. Step 3

No exposure without contact. Next, the contact entry will be filled in. From the menu bar, choose the Contact entry. Two subentries are displayed, Define and Human. Choose the Define entry. The Define Contact dialog is now displayed.

There are two possibilities to define the contact parameters, either from the list of contact scenarios or by entering user defined values. To select a predefined contact scenario, click on the arrow in the scenario box. If available, a number of alphabetically ordered scenarios is shown in the box. A limited number is shown, but other entries can be reached via the scroll bar on the right. Our person cleans a bike. If the list of predefined scenarios is present, find the scenario "Cleaning Bicycle" and click on it. Now it is displayed in the scenario box.

Inspect the parameters by choosing the parameters button. All contact parameters are defined. Now, choose Ok to accept the parameters.

In other cases and when the predefined scenarios are missing user defined values may be entered. Select "User defined" from the contact scenario list and then select the "Parameters" button. Now fill in appropriate contact parameter values. Select Ok to accept the values. Select Ok to accept and close the contact definition dialog.

That is it for contact, neglect the average/worst case choice and continue.

8.4. Step 4

No Uptake without exposure. Next, the exposure scenario and its parameters have to be defined. Choose the Exposure entry from the menu. A submenu will pop up containing the routes of exposure. In the situation sketched in the above, the route of exposure will be the inhalation one. Choose Inhalation from the routes. A dialog is displayed which contains three points of interest: options, scenarios and the parameters button. In this exposure assessment, the primary interest is in the worst case option. Click on Worst Case to check that option. Next, choose the parameters button. Eehh ?? Nothing happens !! That is because a scenario has to be chosen first. Click on the arrow in the scenario box, and pick the "evaporation from mixture" scenario from the possibilities. This scenario describes a situation in which a compound evaporates from a product and it is the closest to the exposure situation given in the above.

Once again, choose the parameters button. Now, a dialog will appear in which the values of the parameters can be given. Set the room volume to 25 m³. Set the ventilation rate to a value of 2.5 m³/hr. Remember, if these dimensions are not the ones displayed, click on the dimension box and choose the right one (use the scroll bar !). Set the weight fraction of the compound in the product to 50% and the molecular weight of the matrix to 500 g/mol. Suppose, we are uncertain about the actual area, we only know that it is in between 0.5 and 1.5 dm². First, set the right dimension, dm², in the dimension box. Then, click on the parameter name. A dialog appears which allows us to set a distribution for the parameter instead of a point value. First choose "uniform distribution" (watch the check !), then give an upper bound of 1.5 and a lower bound of 0.5. That's all we know. Choose Ok to return to the parameter dialog. Choose Ok to accept the parameters and once again Ok to accept the exposure definition.

Intermezzo. People are curious (so are exposure assessors). What is the exposure ? To view this, go to the Report menu and choose Point from the submenu. A dialog displays where, apart from all the "unknown" entries, two entries display information, both with the same value (although they have a different dimension). This is the mean exposure from the scenario that you have set in the exposure definition (step 4), using the contact duration from the contact definition (step 3). The "WC" right of the inhalation exposure denotes that you have selected a worst case in the exposure options.

8.5. Step 5

Last but not least: uptake. The uptake model and parameters can be reached via the Uptake menu entry (surprise!). As in exposure, the submenu contains the routes of exposure. We are assessing the inhalation route, so the Inhalation entry is chosen from the submenu. Now the uptake definition dialog is displayed. This dialog lets you choose the uptake model in the options part and lets you set the parameters of the uptake model with the parameter button. Because the blood/air partition coefficient of tetrachloroethane is known (being 18), we'll choose the flow model first and then press the parameter button. Now, all uptake parameters are shown, but we'll only need a few. Set the air/blood partition coefficient to 0.05291 ($=1/18$), the lung blood flow to 5000 cm³/minute and set the activity to light exercise and accept the default for ventilation rate and set the respirable fraction to 1. We don't need the other parameters. Choose Ok. And once again Ok to leave the uptake definition.

That's it for uptake.

8.6. Step 6

What about the results ?

If we choose from the Report menu the Point entry once again, the report dialog is shown. Now, the inhalation uptake is also defined (with a "P" on the right to denote the flow model, which is mainly based on the Partition coefficient). Also multiroute uptake estimates are shown, which are sum values over all routes of uptake. One is set in terms of mg/kg body weight/day and the other in mg/year.

But graphs are more beautiful. To view exposure as a function of time, leave the report dialog ("Ok") and choose "Options" and "Graph display". Alternatively, click on the second button from the right in the button bar, the white button with the graph. Now, select "Time course" from the "Report" menu. From the dialog, select inhalation exposure and press "Ok". The exposure is drawn on screen. If you would have selected inhalation uptake, uptake would have been drawn. Other entries do not result in a graph, because they are "unknown" in the report dialog.

What about the effect of variation in the release area in the open can scenario ? In step 4, a uniform distribution was chosen. To investigate how this variance propagates through the model, select the "Distribution" entry from the "Report" submenu. Now, choose inhalation from the exposure part (at the top). Then press "Ok". Now, a graph is shown which shows the distribution of the exposure model results. The exposure varies around a value of 0.0002 mg/cm³ or 200 mg/m³.

References

- AMERICAN INDUSTRIAL HEALTH COUNCIL, 1994. Exposure Factors Handbook. AIHC, Washington DC, USA.
- BOGEN K.T. (1995) Models based on steady-state in vitro dermal permeability data underestimate short term in vivo exposures to organic chemicals in water, *J. Exp. Anal. Environ. Epidem.* 4, pp:457-475
- BREMMER H.J. AND VAN VEEN M.P. 2000a. Factsheet Algemeen. Randvoorwaarden en betrouwbaarheid, ventilatie, kamergrootte, lichaamsoppervlak. RIVM report 612810 009. RIVM, Bilthoven.
- BREMMER H.J. AND VAN VEEN M.P. 2000b. Factsheet Verf. Ten behoeve van de schatting van de risico's voor de consument. RIVM report 612810 010. RIVM, Bilthoven.
- DIJKHOF W., BAKKER S., AND MEULEMAN J. 1999. Maximale belasting innovatieve gasteestellen. Fase B: Validatie rekenmodel en voorstel regelgeving. Report HGT/99115/DIJ/031, GasTec, Apeldoorn.
- EUROPEAN CHEMICAL BUREAU. 1996. EUSES, European Union System for the Evaluation of Substances. Ispra, Italy. EUR 17308 EN.
- EUROPEAN UNION. 1996. Technical Guidance Documents in support of the Commission Directive 93/67/EEC on Risk Assessment for new Notified Substances and the Commission Regulation (EC) 1488/94 on Risk Assessment for Existing Substances, European Chemicals Bureau, Ispra, Italy.
- FISEROVA-BERGEROVA V., PIERCE J.T. AND DROZ P.O., 1990. Dermal absorption Potential of Industrial Chemicals: Criteria for Skin Notation. *Am. J. Indust. Med.* 17: 617-635.
- FREIJER J.I., CASSEE F.R. AND VAN BREE L. 1997. Modelling of particulate matter deposition in the human airways. RIVM report 624029001, Bilthoven.
- FREIJER J.I., BLOEMEN H.J.TH., LOOS S. DE, MARRA M., ROMBOUT P.J.A., STEENTJES G.M., AND VAN VEEN M.P. 1997. AirPEX: Air Pollution Exposure Model. RIVM report 650010 005, RIVM, Bilthoven.
- GUY R.H. AND POTTS R.O., 1992. Structure-Permeability Relationships in Percutaneous absorption. *J. Pharm. Sci.* 81: 603-604.
- GUYTON, 1947. Measurement of the respiratory volumes of laboratory animals. *Am. J. Physiol.* 150: 70-77.
- ICRP. 1994. Human respiratory tract model for radiological protection. ICRP publication 66, *Annals ICRP* 24(1-3).
- JAYJOCK M.A., 1994. Back Pressure Modelling of Indoor Air Concentrations From Volatilizing Sources. *Am. Ind. Hyg. Assoc. J.* 55: 230-235.
- MATOKA Y., YOSHIMURA J., OHNISHI J-I., MIKAMI N, AND MATSUO M. 1998. Development of the simulation model *InPest* for prediction of the indoor behavior of pesticides. *Journal of Air and Waste Management Association* 48: 969-978.
- MCKONE T.E. AND HOWD R.A., 1992. Estimating Dermal Uptake of Nonionic Organic Chemicals from Water and Soil: I. Unified Fugacity-Based Models for Risk Assessments. *Risk Analysis.* 12: 543-557.

- MCKONE T.E., 1993. Linking a PBPK Model for Chloroform with Measured Breath Concentrations in Showers: Implications for Dermal Exposure Models. *J. Exp. An. Environ. Epid.* 3: 339-365.
- MOOD A.M., GRAYBILL F.A., AND BOES D.C., 1980. *Introduction to the Theory of Statistics*. third ed., McGraw-Hill, London.
- PRESS W.H., FLANNERY B.P., TEUKOLSKY S.A., AND VETTERLING W.T., 1991. *Numerical Recipes, The Art of Scientific Computing*. Second ed., Cambridge University Press, Cambridge.
- RAMSEY J.C. AND ANDERSEN M.E., 1984. A Physiologically Based Description of the Inhaled Pharmacokinetics of Styrene in Rats and Humans. *Toxicol. Appl. Pharm.* 73: 159-175.
- REIST P.C. 1993. *Aerosol Science and Technology*. Second edition. McGraw-Hill Inc, New York. ISBN 0-07-051882-3.
- RIVM, VROM, WVC, 1994. *Uniform System for the Evaluation of Substances (USES)*, version 1.0. VROM distr. no. 11144/150, The Hague.
- SILBERNAGL S., AND DESPOPOULOS A., 1993. *Sesam atlas van de fysiologie [in dutch]*. Bosch & Keuning, Baarn.
- SINKO, LEESMAN AND AMIDON, 1991. Predicting Fraction Dose Absorbed in Humans Using a Macroscopic Mass Balance Approach. *Pharm. Res.* 8: 979-988.
- SLOB W., 1993. Modelling Long-Term Exposure of the Whole Population to Chemicals in Food. *Risk Anal.* 5: 525-530.
- SPARKS L.E., TICHENOR B.A. AND WHITE J.B., 1993. Modelling Individual Exposure from Indoor Sources, In: *Modelling of Indoor Air Quality and Exposure*, ASTM STP 1205. (Nagda N., red.): American Society for the Testing of Materials, Philadelphia.
- VAN VEEN M.P., OLLING M. AND VERMEIRE T., 1994. *Consumentenblootstelling: een overzicht van blootstellings- en opnamemodellen [in dutch]*. RIVM report 612810001, RIVM Bilthoven.
- VAN VEEN M.P. 1995. *CONSEXPO*, A program to estimate consumer product exposure and uptake. RIVM report 612810 002. RIVM, Bilthoven
- VAN VEEN M.P., 1996. A general Model for Exposure and Uptake from Consumer Products. *Risk Analysis* 16: 331-338.
- VAN VEEN, M.P., FORTEZZA F. BLOEMEN H.J.TH., KLIEST J.J. 1999. Indoor air exposure to volatile compounds emitted by paints: experiment and model. *Journal of Exposure Analysis and Environmental Epidemiology* 9, 569-574
- VAN VEEN M.P., VAN ENGELEN J.G.M. AND VAN RAAIJ M.T.M. 2001. Crossing the River Stone by Stone: Approaches for Residential Risk Assessment for Consumers. *Annals of Occupational Hygiene*.
- VAN VEEN M.P., FORTEZZA F., SPAANS E., AND MENSINGA T. Submitted. Non-professional paint stripping, model prediction and experimental validation of indoor dichloromethane levels. *Indoor Air*.
- VAN VEEN M.P. AND VERMEIRE T.G. In preparation. Residential Exposure Assessment in Europe: an Overview, In: *Residential Exposure Assessment: A Sourcebook*. SRA/ISEA/USEPA.
- VERMEIRE T.G., VAN DER POEL P., VAN DE LAAR R.T.H., AND ROELFZEMA H., 1993. Estimation of Consumer Exposure to Chemicals: Application of Simple Models. *Sci. Tot. Environ.* 136: 155-176.
- VERMEIRE T.G. AND VAN VEEN M.P. 1997. De Schatting van de blootstelling van de mens aan stoffen en straling. De status van het RIVM-onderzoek. Rapport 601132002. RIVM Bilthoven.

- WEEGELS M.F. 1997. Exposure to chemicals in consumer product use. Report TU Delft.
- WEEGELS M.F. AND VAN VEEN M.P. In press. Variation of consumer contact with household products: a preliminary investigation. Risk Analysis.
- WILSCHUT A. 1995. Manual for the SKINPERM model. Report 641Wt/95 CVM-5306 DSM, Heerlen.
- WILSCHUT A. TEN BERGE W.F., ROBINSON P.J., AND MCKONE T.E. 1995. Estimating skin permeation. The validation of five mathematical skin permeation models. Chemosphere 30, p: 1275-1296.
- ZEILMAKER M.J., KROESE E.D., HAPEREN P. VAN, VEEN M.P. VAN, BREMMER H.J., KRANEN H.J. VAN, WOUTERS M.F.A. AND JANUS J.A. 1999. Cancer risk assessment of azo dyes and aromatic amines from garment and footwear. RIVM report 601503 014. RIVM, Bilthoven.

Appendix 1 Mailing list

1. Directeur-Generaal Volksgezondheid, Ministerie van VWS
2. dr. ir. M.W.J. Wolfs, Hoofdinspecteur Keuringsdienst van Waren, Ministerie van VWS
3. drs A.A.W. Kalis, Directeur Gezondheidsbeleid, Ministerie van VWS
4. Prof. dr. J.J. Sixma, Voorzitter van de Gezondheidsraad
5. Prof. dr. G. Elzinga, Portefeuillehouder Volksgezondheid RIVM
6. P. Bragt (VWS/KvW)
7. H. Roelfzema (VWS/GZB)
8. F. Dannen (VWS/KvW, Groningen)
9. W. Dijkhof (GasTec, Apeldoorn)
10. J. Meuleman (GasTec, Apeldoorn)
11. J. Garthoff (CTB, Wageningen)
12. A. Smits-van Prooije (CTB, Wageningen)
13. J.J. van Hemmen (TNO, Zeist)
14. K. van der Jagt (TNO, Zeist)
15. H.J. Schipper (TNO, Zeist)
16. P. Weterings (Weterings Consultancy)
17. H. Pijst (Sarah Lee, Den Haag)
18. H. Temmink (Toxicologie, Wageningen)
19. S. Munn (ECB, Ispra)
20. K. Rasmussen (ECB, Ispra)
21. G. Vollmer (ECB, Ispra)
22. G. Heinemeyer (BgVV, Berlin)
23. A. Philips (HSE, Bootle)
24. A. Garrod (HSE, Bootle)
25. G. Marsili (ISS, Rome)
26. C. Lally (P&G, Strombeek-Wever)
27. G. Moore (KEMI, Stockholm)
28. E. Toda (OECD, Paris)
29. P.G. Pontal (Sophia-Antipolis)
30. M. Derzi (Aventis, Sophia-Antipolis)
31. M. Pandian (InfoScientific)
32. J. Evans (US-EPA)
33. P. McKennedy (US-EPA)
34. J. Worgan (PMRA, Ottawa)
35. Y. Matoba (Sumitomo, Hyogo)
36. G. de Mik (hS3/4)
37. H. Könemann (hCSR)
38. E. Lebret (hLBM)
39. J. Kliet (hIEM)
40. J. Meulenbelt (hVIC)

41. P. van Zoonen (hLOC)
42. A. Opperhuizen (hLEO)
43. H.J. Bremmer (LBM)
44. G. Steentjes (LBM)
45. M. Zeilmaker (LBM)
46. C.J. van Leeuwen (CSR)
47. M.T.M. van Raaij (CSR)
48. J.G.M. van Engelen (CSR)
49. M. Pieters (CSR)
50. G. Wolterink (CSR)
51. T.G. Vermeire (CSR)
52. E. Hulzebos (CSR)
53. M. van Bruggen (IEM)
54. I. de Vries (VIC)
55. T. Mensinga (VIC)
56. Auteur
57. Depot Nederlandse Publicaties en Nederlandse Bibliografie
58. SBD/Voorlichting & Public Relations
59. Bureau Rapportenregistratie
60. Bibliotheek RIVM
- 61-85 Bureau Rapportenbeheer
- 85-100 Reserve exemplaren

Appendix 2. Default values from CONSEXPO 2

CONSEXPO 2 contained a number of default values that were programmed into the application. CONSEXPO 3 omits these values because it relies on the external database for data. A number of defaults present in CONSEXPO 2 are not (yet) available through the database because they are not contained in a factsheet. These will be listed here for compatibility with the CONSEXPO 2. The status of these defaults is that they are based on expert judgement. In terms of the Q-values in the factsheets (see Bremmer and Van Veen, 2000a), they would attain a Q of 4 or less.

Inhalation uptake, diffusion and flow models

Blood Flow. The flow of blood through the lungs. Default value: 6000 cm³/min. Status of default: it is the cardiac output of an adult.

Blood Volume. The volume of blood that is present in the lungs. Default value: 750 cm³. Status of default: guess.

Lung Area: Area of the contact surface between lung air and blood. Default value: 600000 cm² = 60 m². Status of default: literature value for adult.

Lung Volume: total volume of the lung. Default: 2500 cm³ = 2.5 liter. Status of default: approximated from Silbernagl and Despopoulos (1993).

Dead Space: fraction of lung air that is not involved with air/blood exchange. Default value: 0.2. Status of default: guess.

Dermal uptake, diffusion models

Exposed Area. The skin area exposed to the product. Default value: 4340 cm², unless the exposure parameter "product volume" has been defined. Status of default: 4340 cm² is the area of hands, underarm, face and neck, together forming the area that is not covered by clothes in summer. For activities like dish washing, the surface of the hands is more appropriate. Skin surface areas are tabulated by Vermeire et al. (1993). For focal contacts, a much smaller area will be necessary and the default will be based on the product amount. If the product volume is defined, the exposed area is estimated as product volume divided by 10, assuming a layer of 1 mm on the skin.

Blood Volume at Exposed Area. The volume of blood underneath the area of exposure. Default: depends on the exposed area. Status of default: A layer of 1 mm blood inside the skin is assumed and the blood volume is estimated from the exposed area by area*0.1.

Skin Blood Flow at Exposed Area. the blood flow through the skin at the site of exposure. Default value: depends on the exposed area. Status of default: The default is estimated by assuming that the blood flow at the site of exposure is proportional to the area of exposure. The flow is estimated by 2500 * area / 19400, where 19400 cm² is the total body surface and 2500 cm³/min is the total adult blood flow through the skin.

Oral uptake, diffusion models

Migration to Lumen. the fraction of the compound that migrates from the product inside the intestine to the contents of the intestine. This parameter is included to allow for matrix effects. Default value: 1.0. Status of default: the default value implies that the compound is fully available inside the intestine. It is a worst case assumption.

Lumen Flow: The velocity of the intestinal contents, defining the flow through the lumen of the intestine. Default value: 1.67 cm/min. Status of default: the default value is based on the assumption that an intestine with a length of 4 m is traveled in 4 hours.

Intestinal Blood Flow: The flow rate of blood in the wall of the intestine. Default: 1500 cm³/min. Status of default: a value frequently encountered in pharmacokinetic literature.

Intestine Length: The length of that part of the intestine where uptake takes place. Default value: 400 cm. Status of default: approximates the length of the small intestine in an adult, the small intestine being that part where uptake usually takes place.

Intestine Radius: Radius of the small intestine. Default value: 2 cm. Status of default: guess.