

26th CCE Workshop
32nd Task Force of ICP Modelling and Mapping

Topic 5

Update of the Mapping Manual

Anne Christine Le Gall

Chairwoman ICP Modelling & Mapping

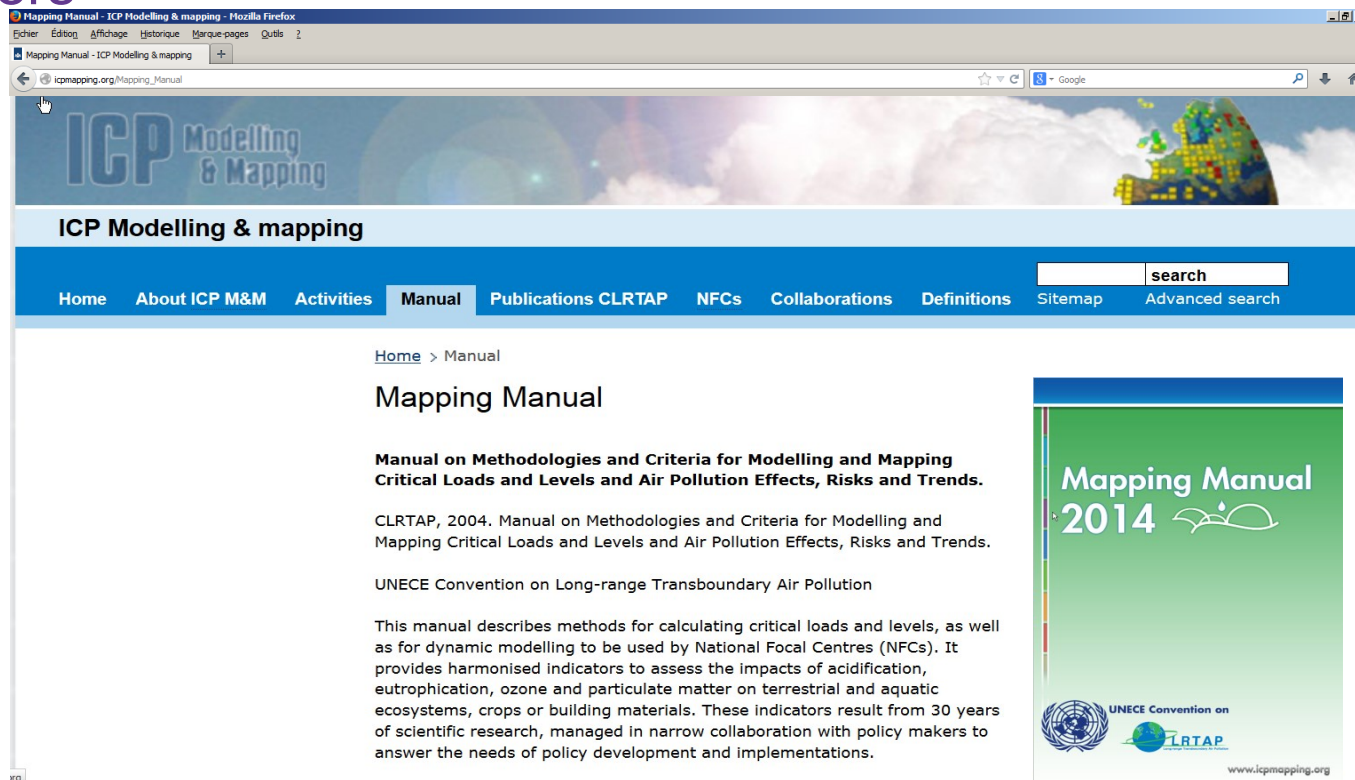
Jean Paul Hettelingh, Max Posch, Jaap Slootweg
CCE

Dessau, Germany, 19th – 22nd April 2016

Updated chapters

WGE adopted all chapters of the updated Mapping Manual, except chapter 5

Adopted chapters will soon appear on the ICP M&M website as current Chapters



The screenshot shows a web browser window displaying the ICP Modelling & Mapping website. The page title is "Mapping Manual - ICP Modelling & mapping - Mozilla Firefox". The browser address bar shows "icpmapping.org/Mapping_Manual". The website header includes the ICP Modelling & Mapping logo and a navigation menu with links: Home, About ICP M&M, Activities, Manual, Publications CLRTAP, NFCs, Collaborations, Definitions, Sitemap, and Advanced search. A search box is also present. The main content area shows the "Mapping Manual" page, which includes the title "Mapping Manual", the subtitle "Manual on Methodologies and Criteria for Modelling and Mapping Critical Loads and Levels and Air Pollution Effects, Risks and Trends.", the author "CLRTAP, 2004.", and a brief description of the manual's content. A small image of the manual cover is visible on the right side of the page.

Procedure to update the Mapping Manual

2015 ICP M&M TF decision

Any future needs for update in the Mapping Manual may be included in the Manual by the following procedure:

- Text to be changed is proposed by experts to the ICP M&M Chair.
- If a consensus on the change is obtained at the following ICP M&M Task Force, the agreed change is submitted to WGE and, once agreed upon, included in the official Mapping Manual version available at the ICP M&M web site.
- New translations to Russian are to be carried out when/if updates are major or numerous.

Procedure to update the Mapping Manual

2015 ICP M&M TF decision

Any future needs for update in the Mapping Manual may be included in the Manual by the following procedure:

- Text to be changed is proposed by experts to the ICP M&M Chair.
- If a consensus on the change is obtained at the following ICP M&M Task Force, the agreed change is submitted to WGE and, once agreed upon, included in the official Mapping Manual version available at the ICP M&M web site.
- If no consensus, two options:
 - ⇒ Mapping Manual remains unchanged,
 - ⇒ New text is added between [square brackets]until new evidence is brought in and agreement is reached (if required, at dedicated workshops). Parties remain free to carry out the calculation as they feel suitable. They will document the specificities of their calculation when they report their results to the CCE.
- New translations to Russian are to be carried out when/if updates are major or numerous.

Update of Chapter 5

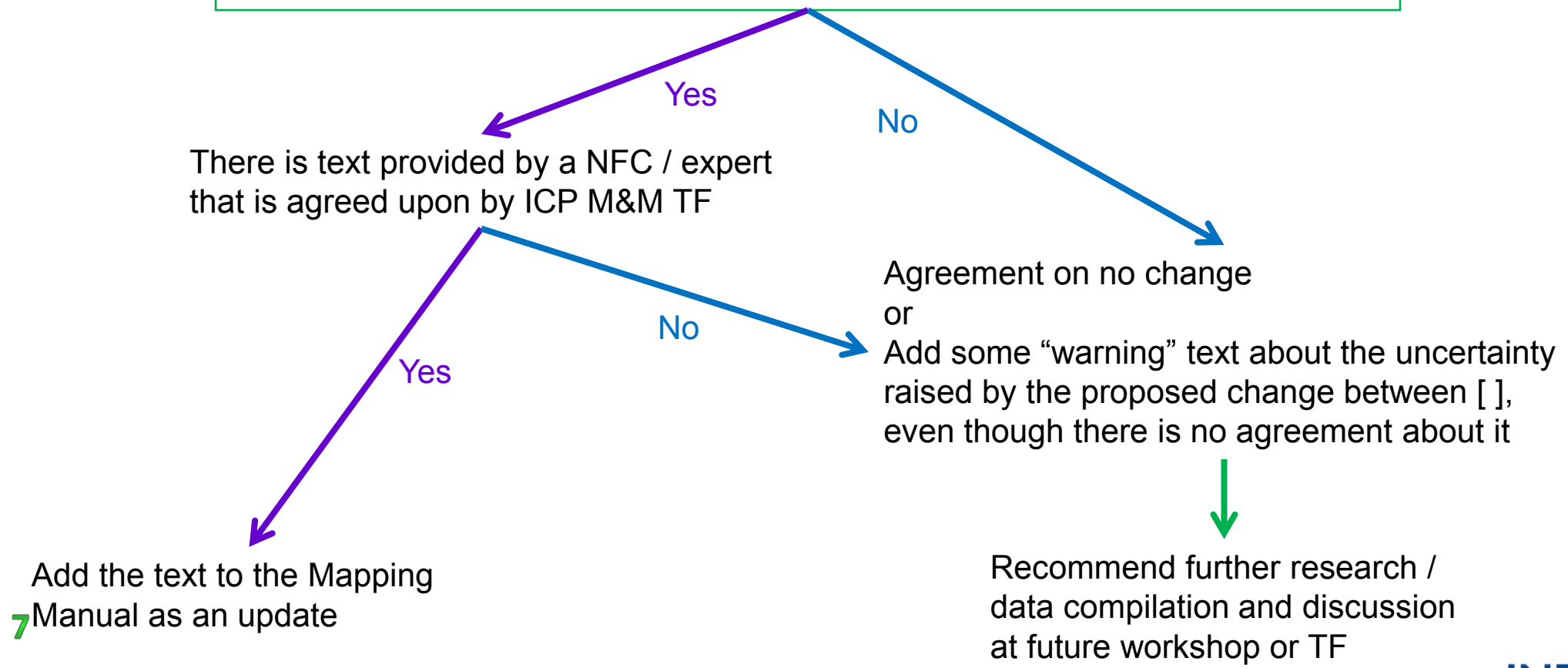
Last year conclusions to this year presentations

Topic	Experts from	Presented by
Nitrogen immobilisation	Germany	Angela Schlutow
Acceptable leaching of nitrogen	CH and selected other experts	Reto Meyer
Aluminium criteria: Critical Bc to Al ratio		Harald Sverdrup
Weathering		Reto Meyer
Critical base saturation	Germany	Reto Meyer
Critical pH		



Method to update the Mapping Manual

There is a proposal for an update (from an ICP M&M expert).
Is that proposal supported by sufficient evidence according to the ICP M&M Task Force?



Acceptable leaching of nitrogen

- 1- Table V.7: Add to the Mapping Manual comments listed in Table 24 (de Vries et al)
- 2- Do all agree that in high precipitation areas, values in Table V.7 leads to overestimation of N leaching?
If so, do we agree that N deposition + high precipitation leads to effects related to eutrophication (and not only to effects related to acidification)?

