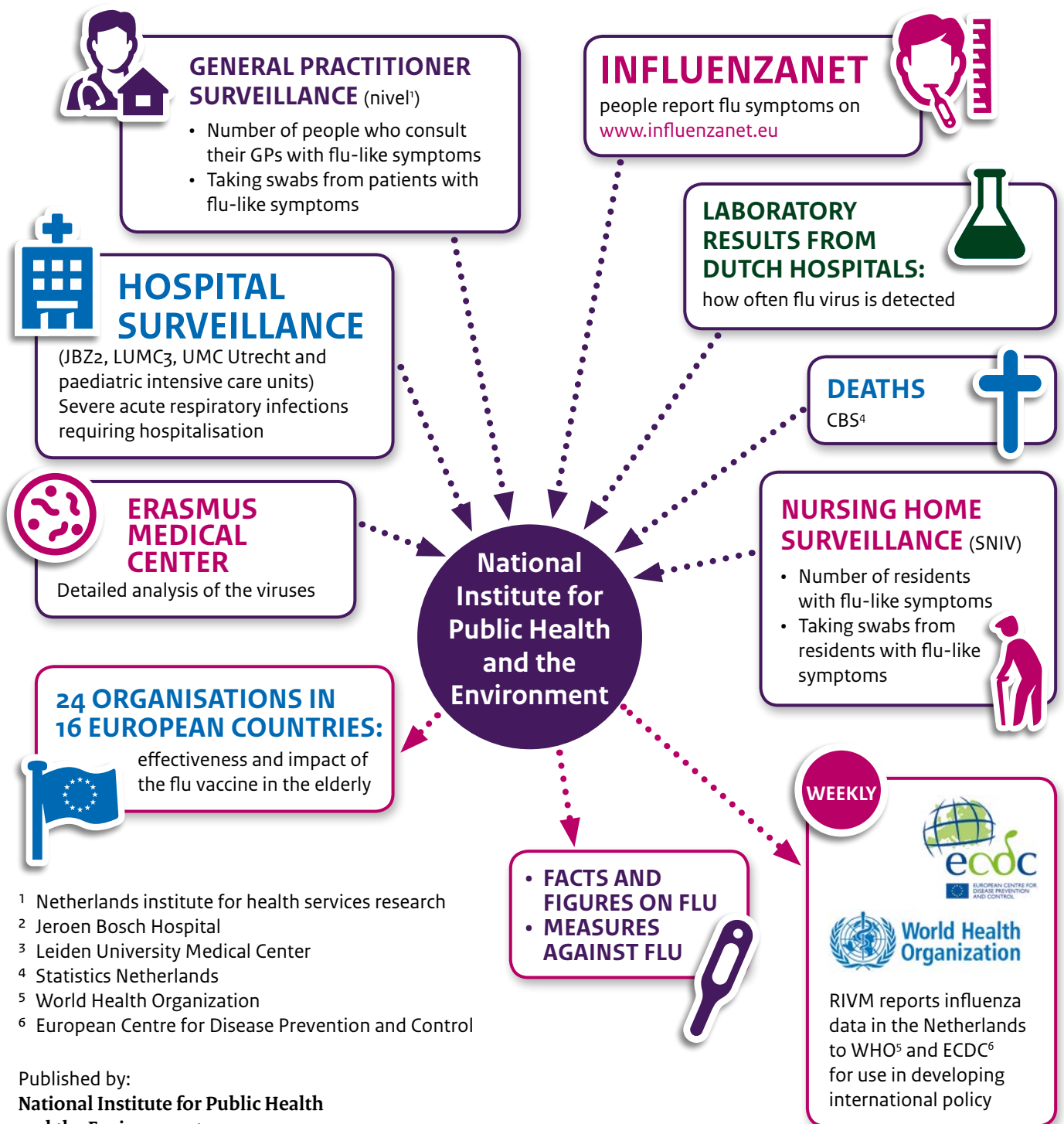




# Partners in flu surveillance

Facts and figures are required to develop measures to combat flu epidemics. RIVM is responsible for mapping these facts and figures and carries out on-going surveillance in cooperation with partners.



1 Netherlands institute for health services research  
2 Jeroen Bosch Hospital  
3 Leiden University Medical Center  
4 Statistics Netherlands  
5 World Health Organization  
6 European Centre for Disease Prevention and Control