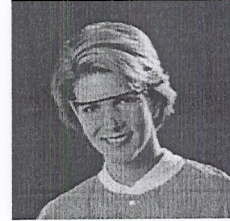


SAFEVIEW* Protective Eyewear


Description:	Protective eyewear for use in situations which may involve splashing or spraying of fluids
Size:	13cm over the front x 17cm frame to behind the ear
Supplier:	Kimberly-Clark N.V. Belgicastraat 17 1930 Zaventem Belgium
Features:	Lightweight construction, colourful, attractive and multiple use frame, can be easily worn over most prescription glasses
Composition:	Frames: Polypropylene Replacement lenses: Polyester film
Latex:	Natural rubber latex free
Sterilisation:	Not sterile
No. of applications:	Single use only
Colour:	Frames: Multicolor Replacement lenses: Clear, transparent
Packaging:	Per Dispenser: 10 items Per Case: 5 dispenser
CE marked:	Yes, according to Council Directive 89/686/EEC relating to Personal Protective Equipment as a Class I device
Code No.	SV50A

**SAFEVIEW* Protective Eyewear
Replacement Lenses**


Description:	Replacement Lenses for use with loose SAVEVIEW frames	
Size:	7cm x 22 cm	
Supplier:	Kimberly-Clark N.V. Belgicastraat 17 1930 Zaventem Belgium	
Features:	Lightweight construction	
Composition:	Polyester film	
Latex:	Natural rubber latex free	
Sterilisation:	Not sterile	
No. of applications:	Single use only	
Colour:	Clear, transparent	
Packaging:	Per Dispenser:	10 items
	Per Case:	25 dispenser
CE marked:	Yes, according to Council Directive 89/686/EEC relating to Personal Protective Equipment as a Class I device	
Code No.	SV250L	