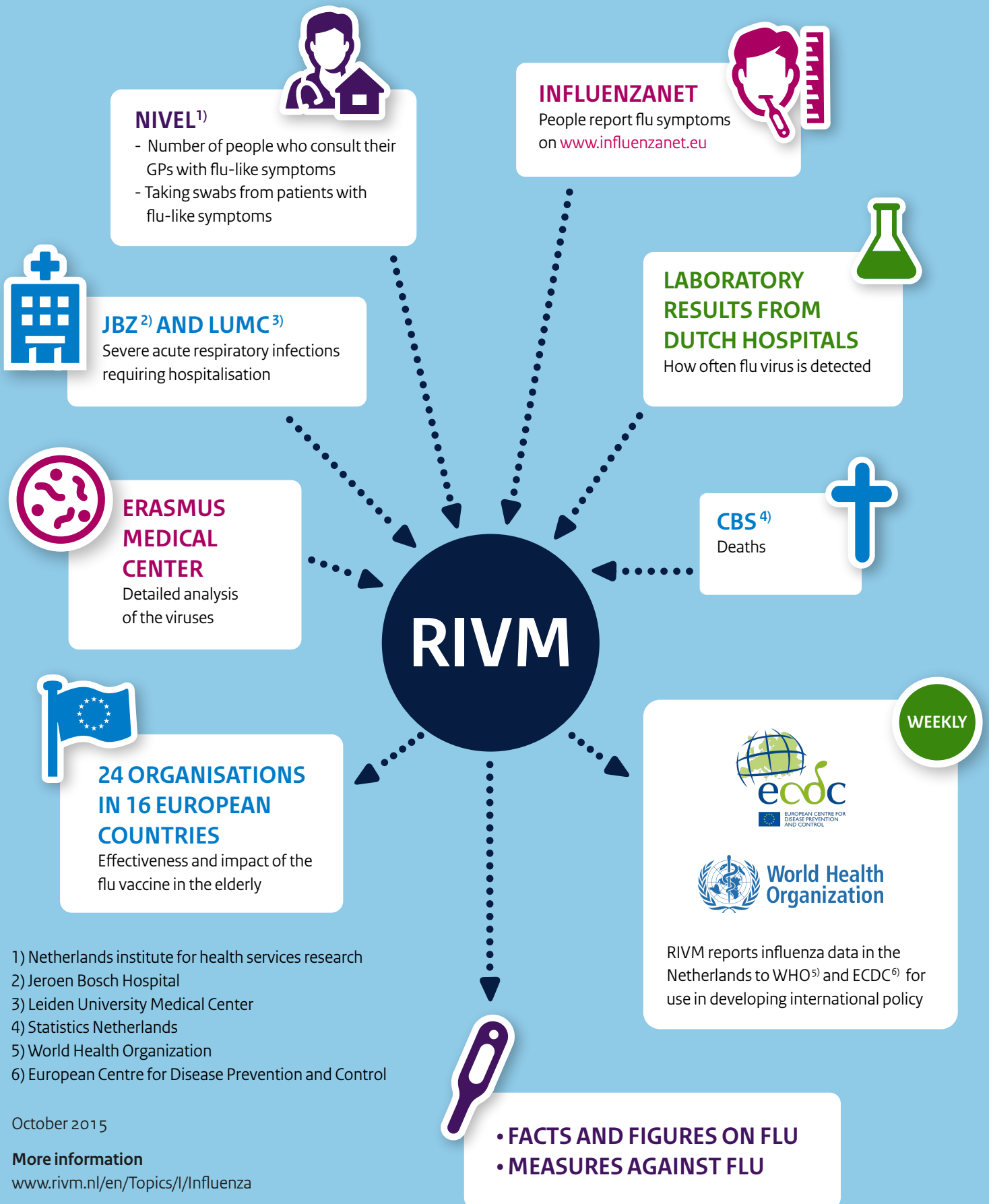




# A graphic summary of flu surveillance

RIVM is responsible for mapping facts and figures on flu in the Netherlands

Facts and figures are required to develop measures to combat flu epidemics. RIVM is responsible for mapping these facts and figures and carries out on-going surveillance in cooperation with partners.



- 1) Netherlands institute for health services research
- 2) Jeroen Bosch Hospital
- 3) Leiden University Medical Center
- 4) Statistics Netherlands
- 5) World Health Organization
- 6) European Centre for Disease Prevention and Control

October 2015

**More information**

[www.rivm.nl/en/Topics/I/Influenza](http://www.rivm.nl/en/Topics/I/Influenza)

**This is a publication of**

The National Institute for Public Health and the Environment of the Netherlands, RIVM  
P.O. Box 1 | 3720 BA Bilthoven  
[www.rivm.nl/en](http://www.rivm.nl/en)