



Probit function technical support document

Date: 18 May 2020
Document id: 20200518-boron trichloride-INTERIM
Status: interim
Author: dr. ir. Marc Ruijten
commissioned by RIVM
E-mail response to: safeti-nl@rivm.nl

substance name	CAS number
Boron trichloride	10294-34-5

This document describes the derivation of a probit function for application in a quantitative risk analysis (QRA). The probit function has been derived according to the methodology described in RIVM report 2015-0102.

This document has been checked for completeness by the Netherlands' National Institute of Public Health and the Environment (RIVM). The contents of this document, including the probit function, has been approved by the Dutch Expert Panel on Probit Functions on scientific grounds. External parties have had the opportunity to comment on the derivation of the proposed probit function. The status of this document has now been raised to "interim", pending a decision on its formal implementation.

The decision on actual implementation depends on the results of a further consequence analysis.

Detailed information on the procedures for the derivation, evaluation and formalization of probit functions is available at http://www.rivm.nl/en/Topics/P/Probit_functions

1 Technical support document Boron trichloride

3 1. Substance identification

4 CAS-number:	10294-34-5
5 IUPAC name:	boron trichloride
6 Synonyms:	boron chloride, trichloroborane, trichloroboron
7 Molecular formula:	B-Cl ₃
8 Molecular weight:	117.2 g/mol
9 Physical state:	gas (at 20°C and 101.3 kPa)
10 Boiling point:	12.5°C (at 101.3 kPa)
11 Vapour pressure:	130 kPa (at 20°C)
12 Saturated vapor conc:	gas (at 20°C)
13 Conversion factor:	1 mg/m ³ = 0.205 ppm (at 20°C and 101.3 kPa)
14	1 ppm = 4.875 mg/m ³ (at 20°C and 101.3 kPa)
15 Labelling:	H300-H314-H330

18 2. Mechanism of action and toxicological effects following acute exposure

20 **Special considerations:** BCl₃ hydrolyses very quickly to form hydrogen chloride gas
21 (or aerosol) and boric acid (a weak acid). The reaction is claimed to be quick and
22 complete (ECHA 2018). The toxicity of BCl₃ is thought to result from the HCl
23 hydrolysis product and is quantitatively and qualitatively similar to that of HCl. In this
24 document the probit function for BCl₃ will be based on the probit relation of HCl.

25 **Acute effects:** The main target organs and tissues for inhalation exposure to HCl are
26 the cornea, conjunctiva, skin and respiratory tract. HCl dissolves in the mucous
27 membranes of the respiratory tract and eyes to form hydrochloric acid, a strong acid
28 that produces coagulative necrosis. The health endpoints are all related to the
29 irritative and corrosive properties of HCl. Symptoms of high exposure are laboured
30 breathing, secretions from nose, mouth and eyes and prostration.

31 Damage occurs in the respiratory system, particularly the upper respiratory tract
32 resulting in mucus secretion, upper airway and/or pulmonary oedema and
33 laryngospasm. The resulting hypoxemia will cause CNS and cardiovascular
34 (myocardial ischemia) effects. Lethality results when the respiratory tissue damage
35 proceeds to inflammation, degeneration and necrosis of affected tissue, atelectasis,
36 emphysema and finally death.

37 **Long-term effects:** Chronic exposure produces essentially the same type of health
38 effects. Reactive Airways Dysfunction Syndrome, an acquired asthma-like condition
39 has been described to develop after single exposure to HCl. Symptoms occur within
40 minutes to hours after the initial exposure and may persist as non-specific bronchial
41 hyper-responsiveness for months to years.

44 3. Human toxicity data

45 No informative reports on human toxicity following acute inhalation exposure were
46 identified in which details about both health effects and the exposure have been
47 documented in sufficient detail.

50 4. Animal acute toxicity data

51 During the literature search the following technical support documents and databases
52 were consulted:

- 53 1. No AEGL TSD, ERPG document or EU RAR were available for boron trichloride

- 1 2. A literature search covered publications from 1980 onwards was performed in
 2 HSDB, MEDline/PubMed, Toxcenter, IUCLID, ECHA, RTECS, IRIS and ToxNet with
 3 the following search terms:
 4 • Substance name and synonyms
 5 • CAS number
 6 • lethal*
 7 • mortal*
 8 • fatal*
 9 • LC₅₀, LC
 10 • probit
 11 3. Unpublished data were sought through networks of toxicological scientists.

12
 13 Animal lethal toxicity data focused on acute exposure are described in Appendix 1. A
 14 total of 1 study was identified -with 1 datasets for 1 species- with data on lethality
 15 following acute inhalation exposure. No dataset was assigned status A or B status for
 16 deriving the human probit function, 1 was assessed to be unfit (status C) for human
 17 probit function derivation.

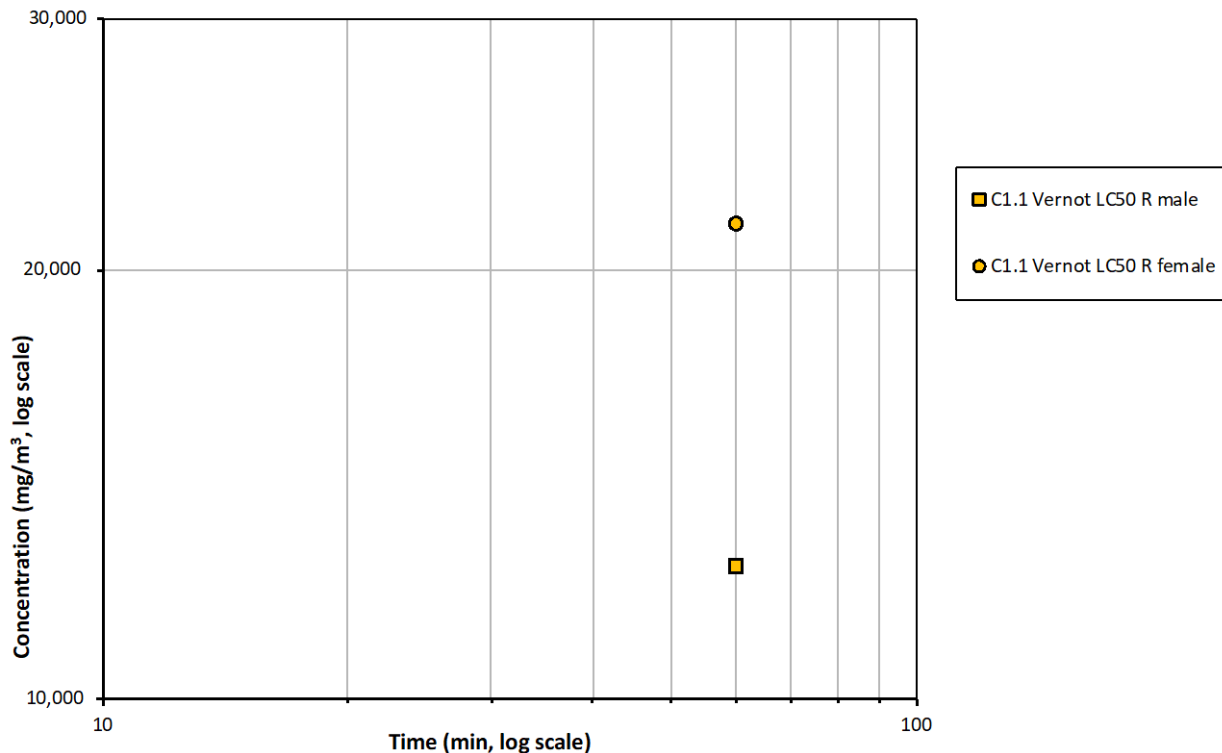
19 Sensory irritation

20 No studies were identified in which sensory irritation was studied. Since the toxicity is
 21 thought to be determined by its hydrolysis product HCl, the RD₅₀ values of HCl were
 22 used to assess the necessity to make an adjustment for reduced minute volume in
 23 animals due to sensory irritation.

25 5. Probit functions from individual studies

26 All available acute lethality data on boron trichloride are displayed in Figure 1.

27



28 **Figure 1** All available acute lethality data for boron trichloride.

29

30

1 There are no data on the inhalation toxicity of boron trichloride that qualify to derive a
2 probit function. The probits will be derived on the basis of the main hydrolysis product
3 hydrogen chloride.
4
5

6 **6. Derivation of the human probit function**

7 The human probit function of BCl₃ was derived from the probit function of hydrogen
8 chloride. The approach to derive threshold values for BCl₃ on the basis of guidelines
9 for the hydrolysis product HCl was also taken for the REACH registration of BCl₃.

10
11 The probit function for BCl₃ is derived with an LC₅₀ value based on HCl equivalents
12 and using the n-value derived for HCl. The other hydrolysis product, boric acid, has a
13 NOAEC of more than one order of magnitude higher than that of HCl and is therefore
14 not considered to be relevant for the hazard assessment of BCl₃ (as stated on the
15 ECHA website consulted 18 June 2018).
16

17 All A- and B1-studies used to derive the probit function of HCl are included in
18 Appendix 1, and clearly marked as studies on HCl instead of BCl₃. To derive the
19 human probit function of HCl the results from the studies by Arts (2000), Hartzell
20 (1987), Lapin (1981), Darmer (1974), Jean (2006), Wohlslagel (1976) and Higgins
21 (1972) have been used to derive a point of departure. These studies qualified for the
22 derivation of a probit function based on the criteria outlined in the methodology
23 (Ruijten *et al.* 2015). The results of study B1.3 (Jean) were used with a weight of 0.5
24 because only nominal concentrations were reported. The 30-minute weighted
25 geometric mean LC₅₀ value was 5198 mg/m³, the arithmetic mean n-value was 1.367.
26

27 The 30-minute LC₅₀ value of HCl that was used as point of departure for the HCl
28 probit function was 5198 mg/m³ which equals 3426 ppm. Complete hydrolysis of 1
29 mole BCl₃ produces 3 moles of HCl. Therefore, the LC₅₀ value of BCl₃ was estimated
30 with a molar adjustment factor of 3 as 3426 / 3 = 1142 ppm, which equals a 30-min
31 rat LC₅₀ = 5568 mg/m³.
32

33 The Point of Departure for the human probit function is a 30-minute geometric mean
34 animal LC₅₀ value of 5568 mg/m³ and an arithmetic mean n-value of 1.367.
35

36 In addition to the rodent data, the expert panel made the following observations for
37 the derivation of the HCl probit function:

- 38 • 3/3 baboons survived a 15-minute exposure to approximately 15000 mg/m³ HCl
39 (Study C.2, Kaplan et al 1988), while HCl exposure to 15000 mg/m³ (study A.2,
40 Hartzell et al) and 12000 mg/m³ (Study A.3, Lapin) for 15 minutes is fatal to 6/6
41 rats.
- 42 • The respiratory response of baboons (and therefore maybe in man) is clearly
43 different from that in rats (Studies C.2 and C.3, Kaplan et al 1988, 1993).

44 Based on the primate data from Kaplan et al (C.2, C.3) it was argued that the
45 derivation of a probit function from rat and mouse data may overestimate the acute
46 lethality of HCl in non-human primates and therefore most likely also in humans,
47 assuming that baboons are a better model for lethality in humans than rats.
48

49 The human equivalent LC₅₀ was calculated by applying the following assessment
50 factors:
51
52

1 **Table 1** *Rationale for the applied assessment factors.*

Assessment factor for:	Factor	Rationale
Animal to human extrapolation:	1	Based on the available data on survival in baboons, an assessment factor of 1 was judged to be appropriate for HCl.
Nominal concentration	1	All reported HCl concentrations are analytical.
Adequacy of database:	2	HCl has a strong database with 3 A studies and 5 B1 studies. However, no adequate studies for BCl ₃ are available, and some uncertainty exists about the validity of the assumption that the toxicity is completely due to HCl.

2

3 The estimated human equivalent 30-minute LC₅₀ value is 5568 / 2 = **2784 mg/m³**.

4

5 The experimentally determined n-value was **1.367**. Assuming a regression coefficient
6 (b×n) of 2 for the slope of the curve, the b-value can be calculated as 2 / n = **1.463**.

7

8 The human probit function is then calculated on the human equivalent 30 min LC₅₀
9 using the above parameters to solve the following equation to obtain the a-value (the
10 intercept): $5 = a + 1.463 \times \ln(2784^{1.367} \times 30)$ resulting in the a-value of **-15.84**.

11

12 **Pr = -15.8 + 1.46 × ln (C ^{1.37} × t) with C in mg/m³ and t in min.**

13

14 The derived human probit function has a scientifically acceptable / sound basis. The
15 probit function is based on 8 studies in the rat and mouse with A and B quality on
16 HCl, with exposure durations ranging from 5 to 180 minutes and exposure
17 concentrations ranging from 40 to 78.000 mg/m³.

18

19 The calculated human 60 min LC_{0.1} (Pr = 1.91) calculated with this probit equation is
20 353 mg/m³ and the calculated human 60 min LC₁ (Pr = 2.67) is 516 mg/m³.

21

22 **Table 2** *LC-values calculated with the derived probit function compared with*
23 *existing acute inhalation exposure guidelines.*

Estimated level	30 min (mg/m ³)	60 min (mg/m ³)
0.1% lethality, this probit	585	353
1% lethality, this probit	855	516
AEGL-3	N/A	N/A
ERPG-3	N/A	N/A
LBW (2007)		100

24

25 Compared with equivalent (inter)national guideline levels as presented in the table
26 above, the lethal levels derived with this probit function are higher.

27

28

Appendix 1 Animal experimental research

Study ID: C.1

Author, year: **Vernot 1977**
 Substance: Boron trichloride
 Species, strain, sex: Male and female Sprague-Dawley rats
 Number/sex/conc. group: 5 / concentration
 Age and weight: adult, 200-300 grams
 Observation period: unspecified

Evaluation of study quality

Criteria	Comment
Study carried out according to GLP	<i>GLP did not exist at the time</i>
Study carried out according to OECD 403 guideline(s)	<i>OECD guideline 403 did not exist at the time</i>
Stability of test compound in test atmosphere	<i>No information</i>
Use of vehicle (other than air)	<i>No information</i>
Whole body / nose-only (incl. head/nose-only) exposure	<i>Whole body</i>
Type of restrainer	<i>N/A, whole body exposure</i>
Pressure distribution	<i>In bell jar, static atmosphere</i>
Homogeneity of test atmosphere in breathing zone of animals	<i>No forced mixing of chamber air</i>
Number of air changes per hour	<i>No (static atmosphere)</i>
Equilibration time (t ₉₅)	<i>N/A, static atmosphere</i>
Start of exposure relative to equilibration	<i>Probably at start of concentration build-up</i>
Actual concentration measurement	<i>'Standard techniques', SD of 5% or less</i>
Particle size distribution measurement in breathing zone of the animals in case of aerosol exposure	<i>No information</i>
Assessment of Reliability	C <i>Only the LC₅₀ value was reported, the testing conditions were not specified and the detail of reporting does not meet current standards.</i>

Probit function

Boron trichloride was one of the chemicals reported as part of a range finding toxicity program in 110 organic and inorganic compounds.

Duration (min.)	LC ₅₀ (mg/m ³) 95%-C.I. Male rat	LC ₅₀ (mg/m ³) 95%-C.I. Female rat
60	12388 (10935 - 14031)	21539 (19208 - 24147)

Appendix 2 Reference list

- AHLS. University of Arizona Emergency Medicine Research Center. Advanced Hazmat Life Support (AHLS). Provider Manual, 4th ed. Tucson, AZ, 2014.
- Arts, J.H.E., C. Mommers, and H. Muijser. 2000 Toxic Effects from Accidental Releases of Hazardous Substances (TEARHS) – Lethal and non-lethal effects in rats upon exposure during short periods of time. TNO Nutrition and Food Research, report V99.1136. Zeist (2000).
- Chemiekaarten. Ed 32. Den Haag. TNO/SDU uitgevers, 2017.
- Darmer KI Jr, Kinkead ER, DiPasquale LC, 1974. Acute toxicity in rats and mice exposed to hydrogen chloride gas and aerosols. *Am Ind Hyg Assoc J.* 1974; 35: 623-631.
- ECHA. 2018. REACH registration dossier boron trichloride - Hydrolysis. <https://echa.europa.eu/registration-dossier/-/registered-dossier/5454/5/2/3/?documentUUID=d7422a34-27c0-4c1f-98a4-442721ea0fed>. Accessed 18-06-2018.
- Hartzell, G.E., A.F. Grand, and W.G. Switzer. 1985. Modeling of toxicological effects of fire gases: VI. Further studies on the toxicity of smoke containing hydrogen chloride. *J. Fire Sci.* 1985; 5: 368-391.
- Jean, PA, RH Gallavan, GB Kolesar *et al.* Chlorosilane Acute Inhalation Toxicity and Development of an LC50 Prediction Model. *Inhal Tox* 18;2006:515-522.
- Kaplan, H.L., A. Anzueto, W.G. Switzer, and R.K. Hinderer. 1988. Effects of Hydrogen Chloride on Respiratory Response and Pulmonary Function of the Baboon. *J. Toxicol. Environ. Health* 1988; 23: 473-493.
- Kaplan, H.L., W.G. Switzer, R.K. Hinderer, A. Anzueto. 1993. A Study on the Acute and Long-Term Effects of Hydrogen Chloride on Respiratory Response and Pulmonary Function and Morphology in the Baboon. *J. Fire Sci.* 1993; 11: 459-484.
- Lapin, C.A. Inhalation toxicity of common combustion gases. E.I. Dupont de Nemours and Company, Haskell Laboratory for Toxicology and Industrial Medicine, report 238-81. Newark (1981).
- NRC. National Research Council. Acute Exposure Guideline Levels for Selected Airborne Chemicals. Volume 4. Washington, DC. The National Academies Press, 2004.
- RIVM 2018. Interventiewaarden gevaarlijke stoffen. http://www.rivm.nl/rvs/Normen/Rampen_en_incidenten/Interventiewaarden.
- Ruijten M.W.M.M., J.H.E. Arts, P.J. Boogaard *et al.* Methods for the derivation of probit functions to predict acute lethality following inhalation of toxic substances. RIVM report 2015-0102. Bilthoven, RIVM, 2015.
- Vernot, E.H., J.D. McEwen, C.C. Haun *et al.* 1977. Acute Toxicity and Skin Corrosion Data for Some Organic and Inorganic Compounds and Aqueous Solutions. *Tox. Applied Pharm.* 42:417-423.
- Wohlslagel, J., L.C. DiPasquale, and E.H. Vernot. 1976. Toxicity of solid rocket motor exhaust: Effects of HCl, HF, and alumina on rodents. *J. Combust. Toxicol.* 1976; 3: 61-70.

Appendix 2 HCl probit studies

The study numbers refer to the Hydrogen chloride TSD.

Study ID: A.1

Author, year: Arts et al 2000

Substance: **Hydrogen Chloride**

Species, strain, sex: Male and female rats, unspecified strain

Number/sex/conc. group: 1 / C×T combination / sex, total number of animals 58

Age and weight: unspecified

Observation period: 14 days

Evaluation of study quality

Criteria	Comment
Study carried out according to GLP	<i>No GLP statement provided</i>
Study carried out according to guideline(s)	<i>Equivalent to OECD 403 (10 animals per concentration); In this study 1 animal/sex/C×T combination was used</i>
Stability of test compound in test atmosphere	<i>Some evidence of aerosol formation at 12,300 and 23,400 mg/m³ concentrations.</i>
Use of vehicle (other than air)	<i>Dry air (relative humidity 1%)</i>
Whole body / nose-only (incl. head/nose-only) exposure	<i>Head/nose only</i>
Type of restrainer	<i>Batelle tube, adequate restrainer</i>
Pressure distribution.	<i>Positive pressure at the nose of the animals (central cylinder), negative pressure in surrounding hood</i>
Homogeneity of test atmosphere at breathing zone of animals	<i>Empty animal location used as sampling point; based on air flow (see below,) homogeneity expected to be present</i>
Number of air changes per hour	<i>100 l/min (cylinder volume 50 l) for 10 rats, i.e. air flow is sufficient</i>
Equilibration time (t95)	<i>1.5 minutes</i>
Start of exposure relative to equilibration	<i>After complete equilibration</i>
Actual concentration measurement	<i>Acid/base titration based on colour change of titration fluid and amount of air passed through. This method may have produced biased concentration estimates due to interference of CO₂ exhaled by the animals.</i>
Particle size distribution measurement in breathing zone of the animals in case of aerosol exposure;	<i>N/A</i>
Assessment of Reliability	A <i>Well performed study</i>

1 **Results**
2

Species	Concentration (mg/m ³)	Exposure duration (min)	Lethality	
			Male	Female
Rat	4890	45/60/90/120/180	0/0/0/0/1	0/0/0/0/0
Rat	6620	30/45/60/90/120	0/0/0/0/1	0/0/0/0/0
Rat	9020	15/20/30/40/60	0/0/0/0/0	0/0/0/0/0
Rat	9250	60/90/120/150	1/1/1/1	1/1/1/1
Rat	12300	20/30/45/60/90	0/0/1/0/1	0/0/0/1/1
Rat	23400	10/20/30/45/60	0/1/1/1/1	0/1/1/1/1

3
4
5 **Probit function**

6 The probit function and associated LC-values have been calculated using the
7 DoseResp program (Wil ten Berge, 2015) as

$$8 \text{ Pr} = a + b \times \ln C + c \times \ln t + d \times S$$

9 with C for concentration in mg/m³, t for time in minutes and S for sex (0 = female, 1
10 = male).

11

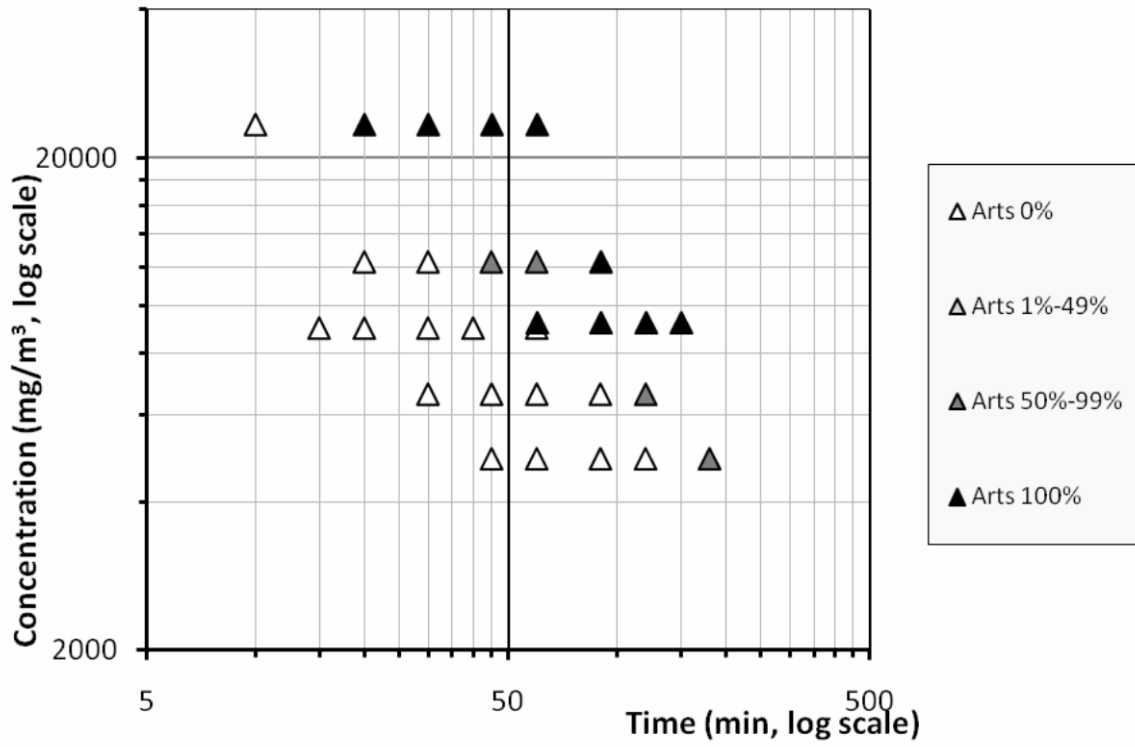
Probit function	Species	a	b	C	d	n-value
Sex as covariate	Rat	-73.9	6.67	4.19	0.53	1.59 (1.26 - 1.92)
Sexes combined	Rat	-73.3	6.64	4.17		1.59 (1.26 - 1.93)

12
13 The LC₅₀ values for both sexes did not differ by more than a factor of 2, nor did
14 analysis with sex as covariate give any indication that sex differences exist. This does
15 not support the proposition that sex differences exist in the lethal response. For this
16 reason the data from both sexes were pooled and analysed to derive the animal
17 probit function.
18

Duration (min.)	LC ₅₀ (mg/m ³) 95%-CI Male	LC ₅₀ (mg/m ³) 95%-CI Female	LC ₅₀ (mg/m ³) 95%-CI Sexes combined
10	29930 (21780 - 42990)	32420 (23560 - 47120)	31070 (22970 - 44100)
30	15000 (12460 - 18570)	16250 (13480 - 20360)	15580 (13350 - 18770)
60	9702 (8376 - 11440)	10510 (9066 - 12540)	10070 (9096 - 11420)

19
20
21 The results for males and females were derived from the analysis with sex as
22 covariate. If the male and female datasets were analyzed separately, the outcome
23 was slightly different. The 30-min LC₅₀ value (mg/m³) for males was 15,930 (11,750 -
24 24,810) and for females 15,130 (12,030 - 24,860).
25

26
27 A graphical overview of the data is presented below. Each concentration-time
28 combination (with 1 male and 1 female animal) represents one point in the plot.
29



1
2
3

1 **Study ID: A.2**

2
3 **Author, year: Hartzell et al 1985**

4 Substance: **Hydrogen Chloride**

5 Species, strain, sex: Rat, male Sprague-Dawley

6 Number/sex/conc. group: 6-8 / group (all male)

7 Age and weight: adult, weight unspecified

8 Observation period: 14 days

9
10 **Evaluation of study quality**

Criteria	Comment
Study carried out according to GLP	<i>No GLP statement provided</i>
Study carried out according to guideline(s)	<i>No mention of guideline OECD 403</i>
Stability of test compound in test atmosphere	<i>Aerosol formation</i>
Use of vehicle (other than air)	<i>Air</i>
Whole body / nose-only (incl. head/nose-only) exposure	<i>Head-only (in restrainer tubes), placed in small clean air space during chamber equilibration</i>
Type of restrainer	<i>'tubular restrainers', not otherwise specified</i>
Pressure distribution.	<i>Not specified</i>
Homogeneity of test atmosphere at breathing zone of animals	<i>Not specified</i>
Number of air changes per hour	<i>Not specified</i>
Equilibration time (t95)	<i>Unable to calculate because the airflow was not specified.</i>
Start of exposure relative to equilibration	<i>As stated by the authors: <u>after complete equilibration a hinged box was opened and the animals exposed to the verified concentration.</u></i>
Actual concentration measurement	<i>Batch sampling with soda lime near breathing zone to determine analytical concentration. Intermittent sampling of small aliquots analysed with Ion Specific Electrode Continuous sampling (conductivity detector) to maintain stable HCl level during the test.</i>
Particle size distribution measurement in breathing zone of the animals in case of aerosol exposure;	<i>Not available</i>
Assessment of Reliability	A

11
12 For the probit calculations it is assumed that the exposure of the animals is almost
13 instantaneously to the measured concentration, even though some dilution may have
14 been present.

15
16 The figure below shows how the restrained animals were exposed. The hinged box
17 used by Hartzell et al resembles that used by Lapin (study A3). The authors claim
18 that animals receive a true 'square wave' exposure pattern without a (significant)
19 equilibration period.

1 For the probit calculations it is assumed that the
 2 exposure of the animals is almost
 3 instantaneously to the measured concentration,
 4 even though some dilution may have been
 5 present.
 6
 7
 8
 9

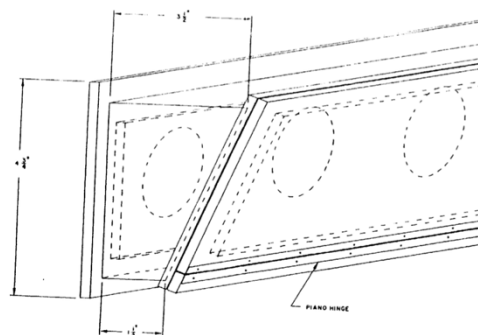


Figure 2. Diagram of animal isolation system.

10 **Results**

Species	Concentration (mg/m ³)	Exposure duration (min)	Lethality	
			Exposed	Responded
rat	13984	5	6	0
rat	16530	5	6	3
rat	19128	5	6	2
rat	21747	5	6	0
rat	23498	5	6	3
rat	30856	5	6	6
rat	8275	10	6	0
rat	11596	10	6	1
rat	12333	10	8	5
rat	12806	10	8	1
rat	13938	10	6	6
rat	6627	15	6	0
rat	9380	15	6	3
rat	12130	15	6	4
rat	13619	15	6	4
rat	15185	15	6	6
rat	7393	22.5	6	2
rat	9749	22.5	6	4
rat	11380	22.5	6	6
rat	12317	22.5	6	2
rat	13142	22.5	8	4
rat	15408	22.5	6	6
rat	3967	30	6	2
rat	5644	30	6	4
rat	6217	30	6	1
rat	8780	30	8	8
rat	9834	30	6	4
rat	12586	30	6	6

Species	Concentration (mg/m ³)	Exposure duration (min)	Lethality	
			Exposed	Responded
rat	2725	60	6	0
rat	3467	60	6	3
rat	3952	60	6	1
rat	6501	60	8	7
rat	6779	60	6	6
rat	7378	60	6	6

1

2 **Probit function**3 The probit function and associated LC-values have been calculated using the
4 DoseResp program (Wil ten Berge, 2015) as

5
$$Pr = a + b \times \ln C + c \times \ln t$$

6 with C for concentration in mg/m³ and t for time in minutes.

7

8 To test the sensitivity of the model outcome for in- or exclusion of the 5-minute data
9 the models were developed both including and excluding the 5-minute data.

10

<i>Probit function</i>	<i>Species</i>	<i>a</i>	<i>b</i>	<i>c</i>	<i>n-value</i>
Including 5 min exposure	<i>Rat</i>	-21.58	2.39	1.64	1.46 (1.12 - 1.79)
Excluding 5 min exposure	<i>Rat</i>	-20.68	2.31	1.56	1.48 (0.97 - 1.99)

11

12 The analysis with and without the 5-min exposure essentially gave the same result,
13 and are both presented below. All further analyses will be based on the model
14 including the 5-minute data.

15

<i>Duration (minutes)</i>	<i>LC₅₀ (mg/m³) 95%-C.I. With 5 min data</i>	<i>LC₅₀ (mg/m³) 95%-C.I. Without 5 min data</i>
10	14190 (12170 - 16730)	13990 (10870 - 18320)
30	6671 (5527 - 7730)	6654 (5390 - 7770)
60	4144 (3081 - 5176)	4163 (2891 - 5415)

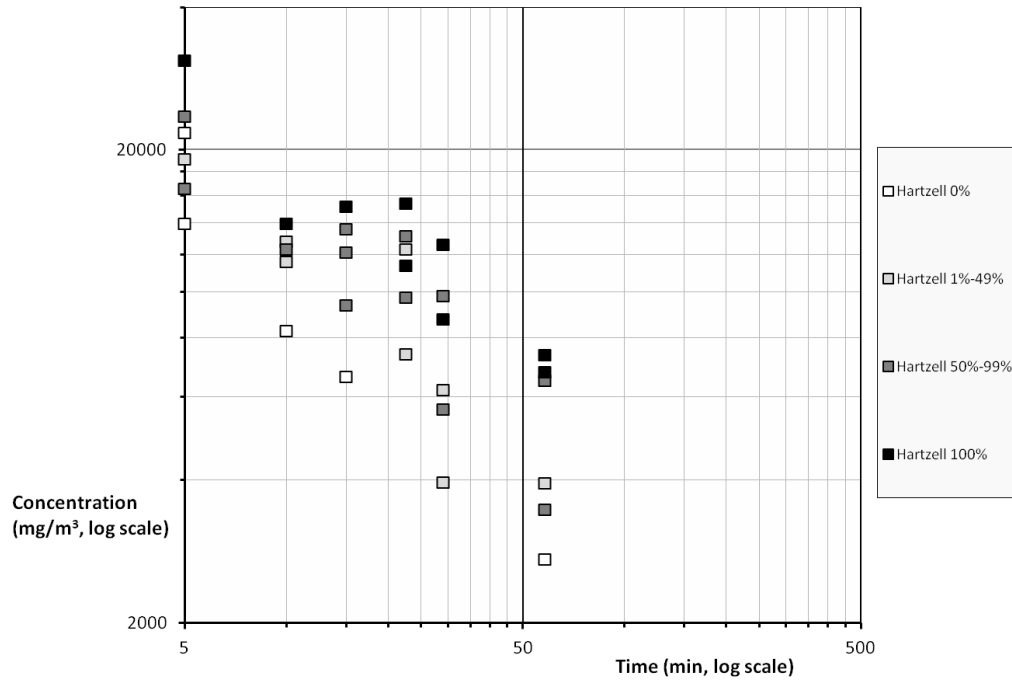
16

17

18 A graphical overview of the data is presented below. Each concentration-time
19 combination (with 6-8 animals) represents one point in the plot.

20

20200518-boron trichloride-INTERIM



1
2
3

1 **Study ID: A.3**

2

3 **Author, year: Lapin 1981**

4 Substance: **Hydrogen Chloride**

5 Species, strain, sex: Rat, male Crl:CD

6 Number/sex/conc. group: 6 (restrained),10 (unrestrained) group

7 Age and weight: adult, weight 250 ± 25 grams

8 Observation period: 14 days

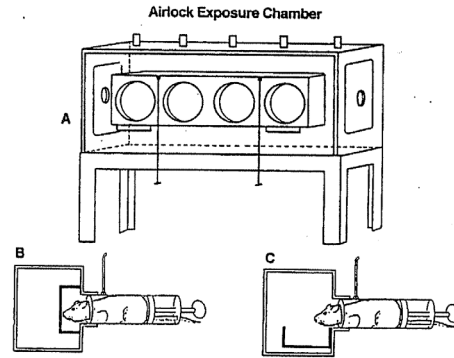
9

10 **Evaluation of study quality**

Criteria	Comment
Study carried out according to GLP	<i>No GLP statement provided</i>
Study carried out according to guideline(s)	<i>No mention of guideline OECD 403. Light/dark cycle, temperature, humidity and food/water provision consistent with OECD guideline 403 criteria.</i>
Stability of test compound in test atmosphere	<i>Aerosol formation not reported.</i>
Use of vehicle (other than air)	<i>Air.</i>
Whole body / nose-only (incl. head/nose-only) exposure	<i>Restrained: Head only. Rats were restrained in whole body holders inside the chamber (175 l) used (in some cases simultaneously) for unrestrained animals. By using a switch a hinged box was swung down to start an exposure (see figure below). Unrestrained: whole body, 10 animals in 175 l chamber.</i>
Type of restrainer	<i>'whole body holders', not otherwise specified</i>
Pressure distribution.	<i>Not specified.</i>
Homogeneity of test atmosphere at breathing zone of animals	<i>'The test gas chamber atmospheres were generated with continuous flow-through generation. Gas concentrations were generated by dilution of commercial bottled gas.'</i>
Number of air changes per hour	<i>Not specified.</i>
Equilibration time (t95)	<i>unable to calculate; no air changes per hour provided.</i>
Start of exposure relative to equilibration	<i>'...once a satisfactory steady state chamber concentration of the test material was obtained.'</i>
Actual concentration measurement	<i>Intermittent sampling ('at frequent intervals') of 47 ml aliquots in a syringe with 3 ml sodium acetate. Analysis with a Cl⁻ Specific Ion Electrode.</i>
Particle size distribution measurement in breathing zone of the animals in case of aerosol exposure;	<i>Not specified, formation of aerosol uncertain.</i>
Assessment of Reliability	A <i>Data were suitable to derive a probit function. Multiple concentration levels and durations were tested, resulting in a good concentration response relation with mortality of 0-100%.</i>

1 The figure shows how the restrained animals
 2 were exposed. Figures A and B show respectively
 3 a closed and opened hinged box. The authors
 4 claim that animals receive a true 'square wave'
 5 exposure pattern without a (significant)
 6 equilibration period.

7
 8 For the probit calculations it is assumed that the
 9 exposure of the animals is almost
 10 instantaneously to the measured concentration,
 11 even though some dilution may have been
 12 present.



A) front view, B) end view, atmosphere pre-equilibrated while rats breathe fresh air, and C) airlock dropped for instantaneous exposure

13 **Results**

Species	Concentration (mg/m ³)	Exposure duration(min)	Restrained	Exposed	Responded
Rat	39	5	Yes	6	0
Rat	76	5	Yes	6	0
Rat	106	5	Yes	6	0
Rat	234	5	Yes	6	0
Rat	244	5	Yes	6	0
Rat	432	5	Yes	6	0
Rat	581	5	Yes	6	0
Rat	595	5	Yes	6	0
Rat	792	5	Yes	6	0
Rat	916	5	Yes	6	0
Rat	916	5	Yes	6	0
Rat	1423	5	Yes	6	0
Rat	10765	5	Yes	6	1
Rat	13922	5	Yes	6	2
Rat	22645	5	Yes	6	2
Rat	23759	5	Yes	6	2
Rat	32668	5	Yes	6	6
Rat	36752	5	Yes	6	6
Rat	39908	5	Yes	6	3
Rat	3703	15	Yes	6	1
Rat	5754	15	Yes	5	1
Rat	6435	15	Yes	6	0
Rat	8585	15	Yes	6	3
Rat	12344	15	Yes	6	6
Rat	16798	15	Yes	6	6

20200518-boron trichloride-INTERIM

Species	Concentration (mg/m ³)	Exposure duration(min)	Restrained	Exposed	Responded
Rat	18376	15	Yes	6	5
Rat	20268	15	Yes	6	5
Rat	26729	15	Yes	5	5
Rat	29513	15	Yes	5	5
Rat	188	30	Yes	6	0
Rat	329	30	Yes	6	0
Rat	405	30	Yes	5	0
Rat	687	30	Yes	6	0
Rat	982	30	Yes	6	0
Rat	1305	30	Yes	6	0
Rat	2191	30	Yes	4	2
Rat	3007	30	Yes	6	0
Rat	4301	30	Yes	6	1
Rat	7371	30	Yes	6	4
Rat	7531	30	Yes	6	6
Rat	11349	30	Yes	6	4
Rat	1330	60	Yes	4	2
Rat	1505	60	Yes	6	3
Rat	1952	60	Yes	6	1
Rat	2735	60	Yes	6	4
Rat	3621	60	Yes	6	6
Rat	4968	60	Yes	6	6
Rat	6768	60	Yes	6	6
Rat	762	5	No	10	0
Rat	13364	5	No	10	0
Rat	20418	5	No	10	1
Rat	26172	5	No	10	0
Rat	26542	5	No	10	0
Rat	37122	5	No	10	3
Rat	59396	5	No	10	9
Rat	60881	5	No	10	7
Rat	77957	5	No	10	10
Rat	84145	5	No	10	9
Rat	6898	15	No	10	0
Rat	11137	15	No	10	1
Rat	14775	15	No	10	0

Species	Concentration (mg/m ³)	Exposure duration(min)	Restrained	Exposed	Responded
Rat	15516	15	No	10	3
Rat	26635	15	No	10	8
Rat	34431	15	No	10	10
Rat	39443	15	No	10	10
Rat	39443	15	No	10	9
Rat	1834	30	No	10	0
Rat	3500	30	No	10	0
Rat	7371	30	No	10	3
Rat	7531	30	No	10	4
Rat	8750	30	No	10	1
Rat	13629	30	No	10	10
Rat	14001	30	No	10	7
Rat	22008	30	No	10	9
Rat	31183	30	No	10	10
Rat	1071	60	No	10	0
Rat	2893	60	No	10	0
Rat	3673	60	No	10	2
Rat	5439	60	No	10	8
Rat	6443	60	No	10	10

1
2
3
4
5
6
7
8
9
10
11
12
13
14
15
16
17
18
19

Probit function

The probit function and associated LC-values have been calculated using the DoseResp program (Wil ten Berge, 2015) as

$$Pr = a + b \times \ln C + c \times \ln t + d \times R$$

Where C is concentration in mg/m³, t is exposure duration in minutes and R is a dummy variable for restraintment.

First, the data were analysed for restrained and unrestrained animals separately. Subsequently the data were analysed with both restrained and unrestrained animals, with a dummy variable to account for restraintment.

To assess the influence of including the 5-min data and the use of restraintment, the calculations were performed:

- with and without the 5-min data.
- for restrained and unrestrained animals separately.
- all animals in the model, with and without a dummy variable to account for restraintment.

Probit function	Species	a	b	c	d	n-value
Only restrained animals, INCL 5 min data	Rat	-13.30	1.55	1.50		1.03 (0.87 – 1.19)
Only restrained	Rat	-14.58	1.62	1.78		0.91 (0.69 – 1.13)

animals, EXCL 5 min data						
Only unrestrained animals, INCL 5 min data	Rat	-28.00	2.69	2.46		1.10 (0.97 - 1.22)
Only unrestrained animals, EXCL 5 min data	Rat	-31.83	2.85	3.13		0.91 (0.79 - 1.04)
All animals, INCL 5 min data, dummy	Rat	-20.49	2.07	1.93	1.55	1.07 (0.97 - 1.18)
All animals, EXCL 5 min data, dummy	Rat	-22.37	2.12	2.32	1.64	0.91 (0.75 - 1.08)
All animals, INCL 5 min data	Rat	-12.58	1.46	1.39		1.05 (0.88 - 1.21)

All LC₅₀ values calculated with the probit model are presented below. For comparison the LC₅₀ values as calculated by Lapin are also presented (calculated per exposure duration).

1. Restrained animals only

Duration (minutes)	LC ₅₀ (mg/m ³) 95%-C.I. With 5 min data	LC ₅₀ (mg/m ³) 95%-C.I. Without 5 min data	LC ₅₀ (mg/m ³) Lapin
10	12300 (10310 - 14510)	14450 (10220 - 20030)	**
30	4228 (3544 - 4962)	4322 (3613 - 5064)	5541
60	2155 (1677 - 2717)	2018 (1520 - 2621)	1837

2. Unrestrained animals only

Duration (minutes)	LC ₅₀ (mg/m ³) 95%-C.I. With 5 min data	LC ₅₀ (mg/m ³) 95%-C.I. Without 5 min data	LC ₅₀ (mg/m ³) Lapin
10	25860 (22990 - 29000)	32300 (26700 - 38880)	**
30	9493 (8466 - 10660)	9690 (8887 - 10550)	9750
60	5045 (4278 - 5872)	4533 (3929 - 5236)	4442

** Lapin only calculated LC₅₀ values for the tested exposure durations.

3. Restrained / unrestrained animals animals in one analysis incl. 5 min data

Duration minutes	LC ₅₀ (mg/m ³) 95%-C.I. Restrained animals	LC ₅₀ (mg/m ³) 95%-C.I. Unrestrained animals	LC ₅₀ (mg/m ³) 95%-C.I. Combined animals
10	12300 (10510 - 14310)	26050 (23090 - 29380)	19430 (16470 - 22890)
30	4415 (3776 - 5133)	9352 (8268 - 10570)	6791 (5718 - 8006)
60	2313 (1915 - 2779)	4900 (4159 - 5769)	3499 (2726 - 4441)

Results for restrained/unrestrained animals in results table 3 taken from the combined analysis, by applying the parameter estimate of the dummy variable. Combined animals are numbers from an analysis without the dummy variable.

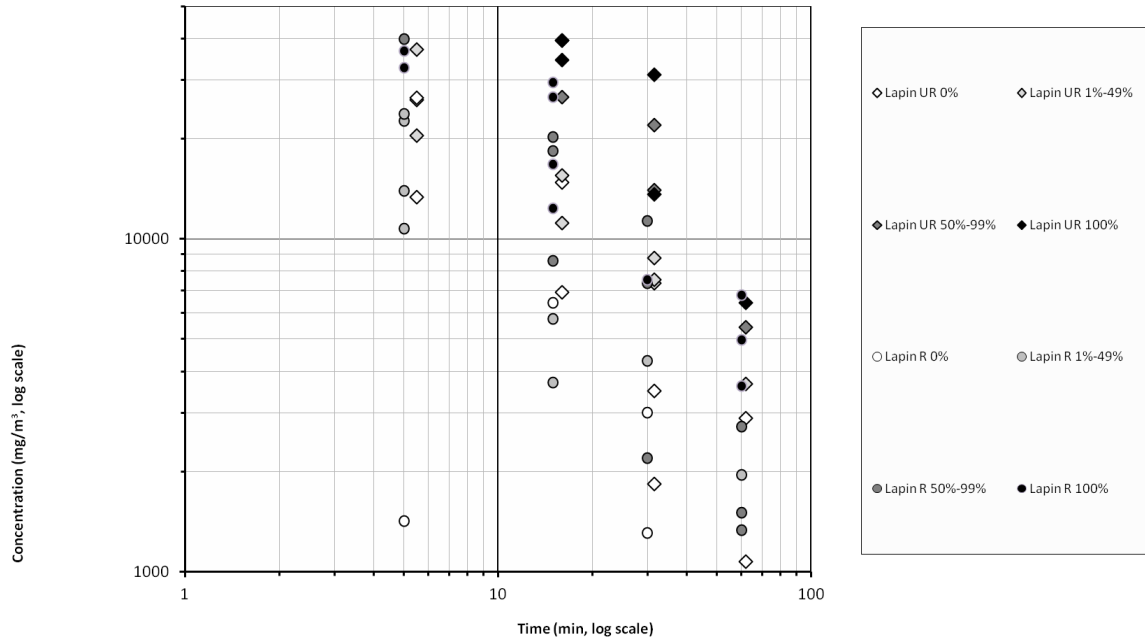
The calculated LC₅₀ values were systematically higher (lower toxicity) in unrestrained vs restrained animals by a factor 2.2-2.5. Stress or inability to avoid exposure in

1 restrained animals may have contributed, although there is no definitive explanation
2 for the difference.

3

4 A graphical overview of the data is presented below. Each concentration-time
5 combination (with 4-10 male rats) represents one point in the plot.

6



7

8

9

10

1 **Study ID: B1.1**

2
3 **Author, year: Darmer 1974**

4 Substance: **Hydrogen Chloride**

5 Species, strain, sex: Rat, CFE (Sprague-Dawley derived), sex unspecified

6 Number/sex/conc. group: 10/concentration/time

7 Age and weight: 250-300 grams, unspecified age (adult as judged from
8 weight)

9 Observation period: 7 days

10
11 **Evaluation of study quality**

Criteria	Comment
Study carried out according to GLP	<i>GLP did not exist at the time</i>
Study carried out according to guideline(s)	<i>OECD 403 did not exist at the time; many details (housing, lighting, food, water, etc) not specified</i>
Stability of test compound in test atmosphere	<i>Not specified. Exposure to gas in pre-dried air (for gas exposures), OR gas introduced in nearly saturated water droplet mist (for aerosol exposures).</i>
Use of vehicle (other than air)	<i>Air</i>
Whole body / nose-only (incl. head/nose-only) exposure	<i>Whole body, animals introduced in chamber with little air loss after chamber concentration equilibrated</i>
Type of restrainer	<i>No restrainer used – whole body</i>
Pressure distribution.	<i>No information on pressure distribution; reference to publication that mentions 0.05 cm negative water pressure in the chamber</i>
Homogeneity of test atmosphere at breathing zone of animals	<i>Not specified; air sampling appears to take place in animal breathing zone.</i>
Number of air changes per hour	<i>Air flow = 10cfm = 283 l/min = 17 m³/h, chamber volume is approx 2 m³, air exchange rate = 8.5/h</i>
Equilibration time (t95)	<i>3 × (2000 l / 283 l/min) = 21 min.</i>
Start of exposure relative to equilibration	<i>Animals were introduced into the chamber by means of sliding cage 'drawers' in the wall of the chamber</i>
Actual concentration measurement	<i>Continuous during exposure with specific chloride ion electrode (in breathing zone)</i>
Particle size distribution measurement in breathing zone of the animals in case of aerosol exposure;	<i>No gravimetric assessment of droplet size, but optical method (semi-quantitative). Estimated diameter < 2 µm (water droplet size = aerodynamic Diameter, no droplets >5 µm observed)</i>
Assessment of Reliability	B1.1 This study received B status because only 2 exposure durations were studied and aerosol exposure was not well quantified. Sufficient other A-studies available.

1 **Results**

2

Species	Concentration (mg/m ³)	Exposure duration (min)	Gas or aerosol	Lethality	
				Exposed	Lethal
Rat	45600	5	Gas	10	0
Rat	49028	5	Gas	10	1
Rat	60572	5	Gas	10	6
Rat	68704	5	Gas	10	7
Rat	87081	5	Gas	10	9
Rat	3159	30	Gas	10	0
Rat	4071	30	Gas	10	1
Rat	4668	30	Gas	10	0
Rat	7874	30	Gas	10	5
Rat	9223	30	Gas	10	8
Rat	10155	30	Gas	10	10
Species	Concentration (mg/l)	Exposure duration (min)	Gas or aerosol	Lethality	
				Exposed	Lethal
Rat	9.7	5	Aerosol	10	0
Rat	28.4	5	Aerosol	10	1
Rat	37.3	5	Aerosol	10	3
Rat	43.6	5	Aerosol	10	6
Rat	57.0	5	Aerosol	10	6
Rat	60.1	5	Aerosol	10	7
Rat	91.3	5	Aerosol	10	10
Rat	4.3	30	Aerosol	10	1
Rat	6.6	30	Aerosol	10	0
Rat	9.0	30	Aerosol	10	6
Rat	9.8	30	Aerosol	10	8

3

4

5 **Probit function**6 The probit function and associated LC-values have been calculated using the
7 DoseResp program (Wil ten Berge, December 2006) as:

8
$$Pr = a + b \ln C + c \ln t + d PS$$

9 Where C is concentration in mg/m³, t is exposure duration in minutes and

10 PS = physical state (gas/aerosol).

11

12 The LC₅₀ did not differ by more than a factor 2 between gas and aerosol exposure,
13 nor did analysis with physical state as covariate give any indication that differences
14 exist between gas and aerosol exposure. The authors also concluded that gas and
15 aerosol exposure produced the same lethality. For this reason the data from gas and
16 aerosol exposures were pooled and analysed to derive the animal probit function (last

1 column of table below). The results for gas and aerosol were derived from the
 2 analysis with physical state as covariate and from pooled data.

3

4 Since only 2 exposure durations were tested in this study, the n-value is meaningless
 5 and this study will be treated as a 30-minute lethality study. The LC₅₀ values
 6 presented below were calculated with only the 30-minute data. The LC₅₀ value for the
 7 combined gas/aerosol data will be used as a PoD for the probit calculation.

8

9

<i>Duration (minutes)</i>	<i>LC₅₀ (mg/m³) 95%-C.I. Gas</i>	<i>LC₅₀ (mg/m³) 95%-C.I. Aerosol</i>	<i>LC₅₀ (mg/m³) 95%-C.I. Combined</i>
30	7132 (6156 -8172)	8329 (7209 - 9676)	7684 (6906 - 8496)

10

11

12

1 **Study ID: B1.2**

2

3 **Author, year: Darmer 1974**

4 Substance: **Hydrogen Chloride**

5 Species, strain, sex: Mouse, CF-1 ICR, sex unspecified

6 Number/sex/conc. group: 10-15 / concentration / time

7 Age and weight: 25-30 grams, unspecified age (adult as judged from
8 weight)

9 Observation period: 7 days

10

11 **Evaluation of study quality**

Criteria	Comment
Study carried out according to GLP	<i>GLP did not exist at the time</i>
Study carried out according to guideline(s)	<i>OECD 403 did not exist at the time; many details (housing, lighting, food, water, etc) not specified</i>
Stability of test compound in test atmosphere	<i>Not specified. Exposure to gas in pre-dried air (for gas exposures), OR gas introduced in nearly saturated water droplet mist (for aerosol exposures).</i>
Use of vehicle (other than air)	<i>Air</i>
Whole body / nose-only (incl. head/nose-only) exposure	<i>Whole body, animals introduced in chamber with little air loss after chamber concentration equilibrated</i>
Type of restrainer	<i>No restrainer used – whole body</i>
Pressure distribution.	<i>No information on pressure distribution; reference to publication that mentions 0.05 cm negative water pressure in the chamber</i>
Homogeneity of test atmosphere at breathing zone of animals	<i>Not specified; air sampling appears to take place in animal breathing zone.</i>
Number of air changes per hour	<i>Air flow = 10cfm = 283 l/min = 17 m³/h, chamber volume is approx 2 m³, air exchange rate = 8.5/h</i>
Equilibration time (t95)	<i>3 × (2000 l / 283 l/min) = 21 min.</i>
Start of exposure relative to equilibration	<i>Animals were introduced into the chamber by means of sliding cage 'drawers' in the wall of the chamber</i>
Actual concentration measurement	<i>Continuous during exposure with specific chloride ion electrode (in breathing zone)</i>
Particle size distribution measurement in breathing zone of the animals in case of aerosol exposure;	<i>No gravimetric assessment of droplet size, but optical method (semi-quantitative). Estimated diameter < 2 µm (water droplet size = aerodynamic Diameter, no droplets >5 µm observed)</i>
Assessment of Reliability	B1.2 This study received B status because only 2 exposure durations were studied and aerosol exposure was not well quantified. Sufficient other A-studies available.

1 **Results**

Species	Concentration (mg/m ³)	Exposure duration (min)	Gas or aerosol	Lethality	
				Exposed	Lethal
Mouse	4864	5	Gas	10	1
Mouse	7691	5	Gas	10	1
Mouse	9340	5	Gas	10	2
Mouse	9743	5	Gas	10	0
Mouse	11438	5	Gas	10	6
Mouse	12259	5	Gas	10	2
Mouse	14100	5	Gas	10	5
Mouse	20756	5	Gas	10	6
Mouse	40257	5	Gas	15	13
Mouse	45600	5	Gas	15	13
Mouse	623	30	Gas	15	0
Mouse	1724	30	Gas	15	2
Mouse	4071	30	Gas	15	8
Mouse	4136	30	Gas	15	4
Mouse	4472	30	Gas	15	12
Mouse	4668	30	Gas	15	6
Mouse	6148	30	Gas	15	11
Mouse	6196	30	Gas	15	13
Mouse	8152	30	Gas	15	14
Species	Concentration (mg/ℓ)	Exposure duration (min)	Gas or aerosol	Lethality	
				Exposed	Lethal
Mouse	13.3	5	Aerosol	10	3
Mouse	14.8	5	Aerosol	10	3
Mouse	17.7	5	Aerosol	10	5
Mouse	22.0	5	Aerosol	10	9
Mouse	25.0	5	Aerosol	10	9
Mouse	27.6	5	Aerosol	10	10
Mouse	1.8	30	Aerosol	10	2
Mouse	3.1	30	Aerosol	10	5
Mouse	3.8	30	Aerosol	10	5
Mouse	4.0	30	Aerosol	10	5
Mouse	4.3	30	Aerosol	10	9
Mouse	4.5	30	Aerosol	10	7
Mouse	6.5	30	Aerosol	10	10

2
3

1 **Probit function**

2 The probit function and associated LC-values have been calculated using the
3 DoseResp program (Wil ten Berge, December 2006) as
4 $Pr = a + b \times Inc + c \times \ln T + d \times PS$, with PS = physical state (gas/aerosol).

5

6 The LC₅₀ did not differ by more than a factor 2 between gas and aerosol exposure,
7 nor did analysis with physical state as covariate give any indication that differences
8 exist between gas and aerosol exposure. The authors also concluded that gas and
9 aerosol exposure produced the same lethality. For this reason the data from gas and
10 aerosol exposures were pooled and analysed to derive the animal probit function (last
11 column of table below). The results for gas and aerosol were derived from the
12 analysis with physical state as covariate and from pooled data.

13

14 Since only 2 exposure durations were tested in this study, the n-value is meaningless
15 and this study will be treated as a 30-minute lethality study. The LC₅₀ values
16 presented below were calculated with only the 30-minute data. The LC₅₀ value for the
17 combined gas/aerosol data will be used as a PoD for the probit calculation.

18

<i>Duration (minutes)</i>	<i>LC₅₀ (mg/m³) 95%- C.I. Gas</i>	<i>LC₅₀ (mg/m³) 95%- C.I. Aerosol</i>	<i>LC₅₀ (mg/m³) 95%- C.I. Combined</i>
30	4043 (3394 - 4648)	3122 (2500 - 3741)	3616 (3093 - 4081)

19

20

21

1 **Study ID: B1.3**

2
3 **Author, year: Jean et al. 2006**

4 Substance: **Hydrogen Chloride**

5 Species, strain, sex: Male and female Fischer 344 rats

6 Number/sex/conc. group: 5 animals / sex / concentration

7 Age and weight: 8-12 weeks, 100-210 gr. (males), 100-160 gr (females)

8 Observation period: 14 days

9
10 **Evaluation of study quality**

Criteria	Comment
Study carried out according to GLP	<i>According to US EPA GLP</i>
Study carried out according to guideline(s)	<i>study meets OECD 403 guideline.</i>
Stability of test compound in test atmosphere	<i>Stable</i>
Use of vehicle (other than air)	<i>Air</i>
Whole body / nose-only (incl. head/nose-only) exposure	<i>Whole body</i>
Type of restrainer	<i>NA</i>
Pressure distribution.	<i>No information</i>
Homogeneity of test atmosphere at breathing zone of animals	<i>No information</i>
Number of air changes per hour	<i>approx. 44 air changes / hour</i>
Equilibration time (t95)	<i>T₉₉ is stated to be 6 minutes</i>
Start of exposure relative to equilibration	<i>Animals were in the chamber when the exposure started, and withdrawn from the chamber after allowing at least 1 T₉₉ period to pass</i>
Actual concentration measurement	<i>While inlet and chamber concentrations were monitored, nominal concentrations were used for the calculations</i>
Particle size distribution measurement in breathing zone of the animals in case of aerosol exposure;	<i>No information</i>
Assessment of Reliability	B1.3 <i>Only 1 exposure duration, only LC₅₀ value described without individual concentration-lethality data</i>

11
12 This dataset is part of a study where the relative acute inhalation toxicities of a series
13 of chlorosilanes is compared to the acute inhalation toxicity of HCl, aimed at building
14 a prediction model for chlorosilane toxicity. The test conditions for the chlorosilanes
15 have been described in some detail, the testing conditions for HCl have not. Since the
16 study was well designed and described and since the comparability of tests across the
17 tested chemicals is the main feature of the study, it is assumed that the test
18 conditions for HCl are equal to those for the chlorosilanes.

1 **Results**

2 The study only reports the 1-hour LC50 value in rats, males and females combined.

3

4 **Probit function**5 No concentration-time-response probit function could be calculated from these data
6 alone.

7

8

<i>Duration (minutes)</i>	<i>LC₅₀ (mg/m³) 95%- C.I. Male</i>	<i>LC₅₀ (mg/m³) 95%- C.I. Female</i>	<i>LC₅₀ (mg/m³) 95%- C.I. Combined</i>
60			5502 (4656 - 7691)

9

10

1 **Study ID: B1.4**

2

3 **Author, year: Wohlslagel et al. 1976**

4 Substance: **Hydrogen Chloride**

5 Species, strain, sex: Male rats, Sprague-Dawley

6 Number/sex/conc. group: 10 males / concentration

7 Age and weight: adult males, 250-325 gr.

8 Observation period: 14 days

9

10 **Evaluation of study quality**

Criteria	Comment
Study carried out according to GLP	<i>GLP did not exist at the time</i>
Study carried out according to guideline(s)	<i>OECD 403 did not exist at the time.</i>
Stability of test compound in test atmosphere	<i>No information</i>
Use of vehicle (other than air)	<i>No information</i>
Whole body / nose-only (incl. head/nose-only) exposure	<i>Whole body</i>
Type of restrainer	<i>NA</i>
Pressure distribution	<i>No information</i>
Homogeneity of test atmosphere at breathing zone of animals	<i>No information</i>
Number of air changes per hour	<i>airflow = 11 cubic feet/min in a 22.1 cubic feet chamber, which equals 30 air changes / hour</i>
Equilibration time (t95)	<i>6 minutes</i>
Start of exposure relative to equilibration	<i>Animals were inserted and withdrawn from the exposure chamber 'using a sliding cage drawer'. It is unclear how much clean air was introduced with each opening of the chamber.</i>
Actual concentration measurement	<i>Continuous analysis with ion specific (and reference) electrode</i>
Particle size distribution measurement in breathing zone of the animals in case of aerosol exposure;	<i>No information</i>
Assessment of Reliability	B1.4 <i>Only 1 exposure duration, details about exposure conditions missing</i>

11 **Results**

12

13

Species	Concentration (mg/m ³)	Exposure duration (min)	Lethality	
			exposed	responded
rat	2756	60	10	0
rat	3929	60	10	2
rat	4976	60	10	6
rat	5990	60	10	8
rat	6772	60	10	10

1 **Probit function**

2 No concentration-time-response probit function could be calculated from these data
3 alone. Data were only available for a 1 hour time period. Therefore only the 1 hour
4 LC₅₀ value was calculated and presented in the table below.

5
6

<i>Duration (minutes)</i>	<i>LC₅₀ (mg/m³) 95%- C.I. Male</i>	<i>LC₅₀ (mg/m³) 95%- C.I. Female</i>	<i>LC₅₀ (mg/m³) 95%- C.I. Combined</i>
60	4748 (4174 - 5246)		

7
8

1 **Study ID: B1.5**

2

3 **Author, year: Wohlslagel 1976**

4 Substance: **Hydrogen Chloride**

5 Species, strain, sex: Male mice, CF-1 ICR

6 Number/sex/conc. group: 10 males / concentration

7 Age and weight: adult males, 25-32 gr.

8 Observation period: 14 days

9

10 **Evaluation of study quality**

Criteria	Comment
Study carried out according to GLP	<i>GLP did not exist at the time</i>
Study carried out according to guideline(s)	<i>OECD 403 did not exist at the time.</i>
Stability of test compound in test atmosphere	<i>No information</i>
Use of vehicle (other than air)	<i>No information</i>
Whole body / nose-only (incl. head/nose-only) exposure	<i>Whole body</i>
Type of restrainer	<i>NA</i>
Pressure distribution.	<i>No information</i>
Homogeneity of test atmosphere at breathing zone of animals	<i>No information</i>
Number of air changes per hour	<i>airflow = 11 cubic feet/min in a 22.1 cubic feet chamber which equals 30 air changes / hour</i>
Equilibration time (t95)	<i>6 minutes</i>
Start of exposure relative to equilibration	<i>Animals were inserted and withdrawn from the exposure chamber 'using a sliding cage drawer'. It is unclear how much clean air was introduced with each opening of the chamber.</i>
Actual concentration measurement	<i>Continuous analysis with ion specific (and reference) electrode</i>
Particle size distribution measurement in breathing zone of the animals in case of aerosol exposure;	<i>No information</i>
Assessment of Reliability	B1.5 <i>Only 1 exposure duration, details about exposure conditions missing</i>

11 **Results**

12

13

Species	Concentration (mg/m ³)	Exposure duration (min)	Lethality	
			exposed	responded
mouse	847	60	10	2
mouse	1497	60	10	3
mouse	2108	60	10	6
mouse	2891	60	10	8
mouse	3764	60	10	10

1 Probit function

2 No concentration-time-response probit function could be calculated from these data
3 alone. Data were only available for a 1 hour time period. Therefore only the 1 hour
4 LC₅₀ value was calculated and presented in the table below.

5

<i>Duration (minutes)</i>	<i>LC₅₀ (mg/m³) 95%- C.I. Male</i>	<i>LC₅₀ (mg/m³) 95%- C.I. Female</i>	<i>LC₅₀ (mg/m³) 95%- C.I. Combined</i>
60	1684 (1219 - 2138)		

6

7

8

1 **Study ID: C.2**

2

3 **Author, year: Kaplan 1988**

4 Substance: **Hydrogen Chloride**

5 Species, strain, sex: male baboons

6 Number/sex/conc. group: 3 / concentration

7 Age and weight: adult, 7.1-13.1 kg

8 Observation period: 3 months

9

10 **Evaluation of study quality**

Criteria	Comment
Study carried out according to GLP	<i>No GLP statement provided</i>
Study carried out according to guideline(s)	<i>No mention of guideline OECD 403. Study was not aimed at determining acute lethality. Light/dark cycle, temperature, humidity and food/water provision consistent with OECD guideline 403 criteria.</i>
Stability of test compound in test atmosphere	<i>No information. Deposition of HCl on the walls of the exposure chamber was mentioned.</i>
Use of vehicle (other than air)	<i>Air with 50% rel. hum.</i>
Whole body / nose-only (incl. head/nose-only) exposure	<i>Head only</i>
Pressure distribution.	<i>Test chamber was kept at -0.6 mm water pressure</i>
Homogeneity of test atmosphere at breathing zone of animals	<i>1 sampling location.</i>
Number of air changes per hour	<i>Airflow of 40 l/min through 200 l chamber, i.e. 12 air changes/hour</i>
Actual concentration measurement	<i>Continuous monitoring: continuous titration (AFNOR French standard FD X70101, 1982) or microconductivity detector to maintain a constant exposure level. Analytical determination of actual exposure level by titration of HCl adsorbed on dry soda lime sampling tubes (5 fixed time intervals of 3 min).</i>
Particle size distribution measurement in breathing zone of the animals in case of aerosol exposure;	<i>No information</i>
Assessment of Reliability	C Data do not allow to calculate an LC ₅₀ , but study provides essential supporting information

11
12
13

1 **Results**

Species	Concentration (mg/m ³)	Exposure duration (min)	Lethality Male
Baboon	0	15	0
Baboon	787-885	15	0
Baboon	5259-7001	15	0
Baboon	12920-17580	15	0

2

3 Respiratory rate (f), tidal volume (V_T), and Minute Volume (MV) were measured and
 4 recorded before (5 min), during (15 min) and after (15 min) exposure of the
 5 anesthetized baboons (13 mg/kg ketamine). Arterial blood samples were obtained
 6 from a catheter in the femoral artery once before exposure, every minute during
 7 exposure and every 5 minutes after exposure until the animal's appearance was
 8 normal. Pulmonary function tests were performed in the week before, 3 days and 3
 9 months after exposure.

10

11 After initiation of exposure, baboons held their breath for 10-20 seconds and then
 12 increased their respiratory rate (figure 2 taken from Kaplan et al), while tidal volume
 13 remained unaffected.
 14

14

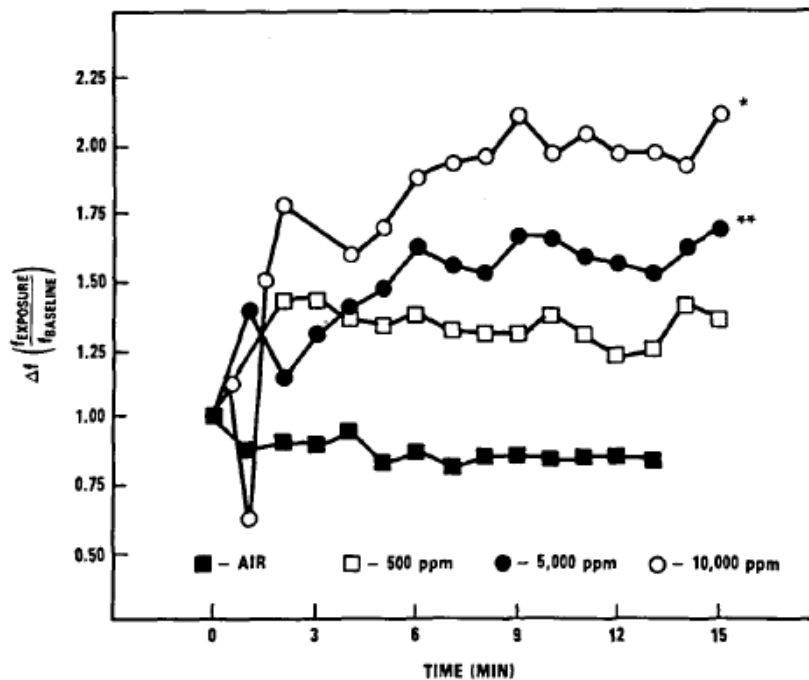


FIGURE 2. Change in respiratory rate (f) of the baboon during a 15-min exposure to air or HCl atmospheres; Δf is the ratio of f during exposure to the baseline f during the 5 min prior to exposure. Data points are average values of three animals. Asterisk, significantly different ($p \leq 0.05$) from control (air) and 500 ppm HCl. Double asterisk, significantly different ($p \leq 0.05$) from control (air).

15

16

17 Minute volume also increased with exposure level (figure 3 from Kaplan et al). The
 18 tested HCl exposures did not cause any significant alterations in any of the pulmonary
 19 function parameters in any of the HCl exposed groups at 3 days or 3 months following
 20 exposure.

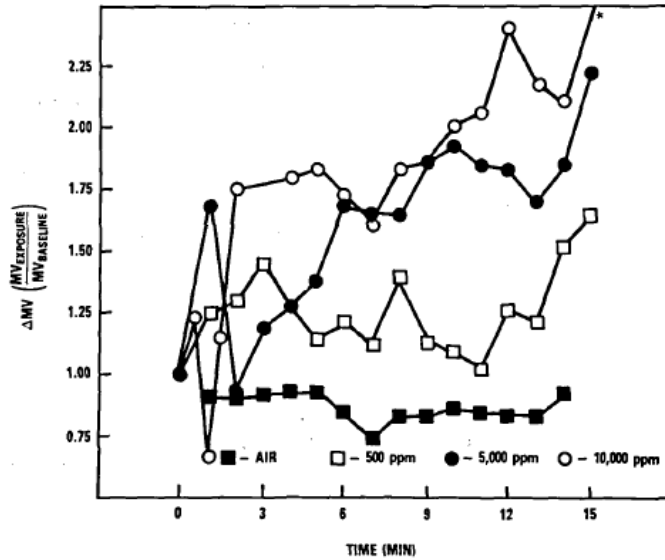


FIGURE 4. Change in minute volume (MV) of the baboon during a 15-min exposure to air or HCl atmospheres; ΔMV is the ratio of MV during exposure to the baseline MV during the 5 min prior to exposure. Data points are average values of three animals. Asterisk, significantly different ($p \leq 0.05$) from control (air).

1
2
3
4
5
6

Despite the increased respiratory frequency and minute volume in response to HCL inhalation, arterial PaO₂ values decreased rapidly in animals exposed to ±6000 mg/m³ and to ±15000 mg/m³.

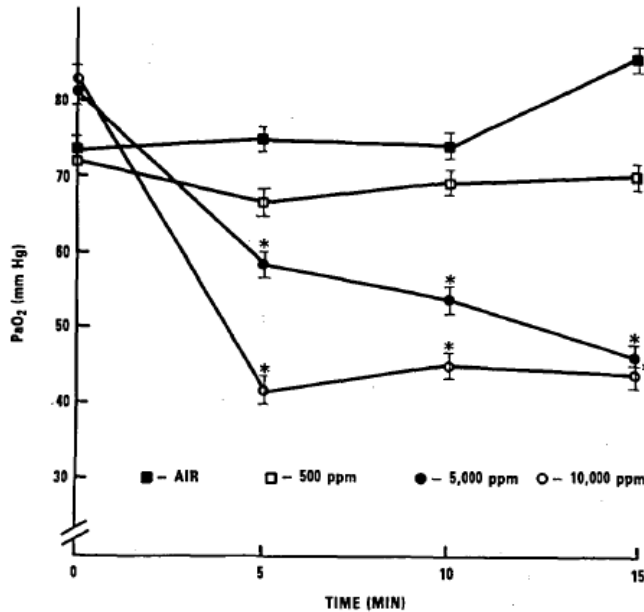


FIGURE 5. Arterial PaO₂ of the baboon during a 15-min exposure to air or HCl atmospheres. Values are means \pm SD of three animals. Asterisk, significantly different ($p \leq 0.05$) from preexposure, control, and 500-ppm values.

7
8
9
10
11
12
13
14

The data suggest a possibly increased Minute Volume response at 3 months past exposure to ±6000 mg/m³ and ±15000 mg/m³ to a CO₂ challenge (high variability, small groups).

1 **Study ID: C.3**

2
3 **Author, year: Kaplan 1993**

4 Substance: **Hydrogen Chloride**

5 Species, strain, sex: male baboons

6 Number/sex/conc. group: 3 / concentration

7 Age and weight: adult, 7.1-13.1 kg

8 Observation period: 1 year

9
10 **Evaluation of study quality**

Criteria	Comment
Study carried out according to GLP	<i>No GLP statement provided</i>
Study carried out according to guideline(s)	<i>No mention of guideline OECD 403. Study was not aimed at determining acute lethality. Light/dark cycle, temperature, humidity and food/water provision consistent with OECD guideline 403 criteria.</i>
Stability of test compound in test atmosphere	<i>No information. Deposition of HCl on the walls of the exposure chamber was mentioned.</i>
Use of vehicle (other than air)	<i>Air with 50% rel. hum.</i>
Whole body / nose-only (incl. head/nose-only) exposure	<i>Head only</i>
Pressure distribution.	<i>Test chamber was kept at -0.6 mm water pressure</i>
Homogeneity of test atmosphere at breathing zone of animals	<i>1 sampling location.</i>
Number of air changes per hour	<i>Airflow of 40 l/min through 200 l chamber, i.e. 12 air changes/hour</i>
Actual concentration measurement	<i>Continuous monitoring: continuous titration (AFNOR French standard FD X70101, 1982) or microconductivity detector to maintain a constant exposure level. Analytical determination of actual exposure level by titration of HCl adsorbed on dry soda lime sampling tubes (5 fixed time intervals of 3 min).</i>
Particle size distribution measurement in breathing zone of the animals in case of aerosol exposure;	<i>No information</i>
Assessment of Reliability	C Data do not allow to calculate an LC ₅₀ , but study provides essential supporting information

11
12 This is essentially the same study as Kaplan *et al* 1988, but with an observation
13 period extended to 1 year. The upper respiratory tract (biopsy) and lung tissue from
14 the right middle lobe of the lungs (lobectomy) of baboons exposed to 0 (control),
15 ±6000 mg/m³ and ±15000 mg/m³ were studied with light microscopic examination.

1 Significant histopathological changes were only observed in animals exposed to
2 ± 15000 mg/m³; the most significant abnormality consisted of fibrosis of the
3 pulmonary parenchyma and pleura.

4
5 In 2/3 animals exposed to ± 6000 mg/m³ mild or minimal patchy atelectasis and
6 minimal mucinous exudate in smaller bronchi or bronchioles were the principal
7 findings.

8 No histopathological changes were found in the biopsy samples of the respiratory
9 tract at any of the exposure conditions.

10
11 No chest X-ray changes were observed in any of the animals within 1 hour following
12 the exposure.

13
14
15