



**National Institute for Public Health  
and the Environment**  
*Ministry of Health, Welfare and Sport*

**Epidemiological report of SARS-CoV-2 on the Dutch Caribbean CAS- and BES-islands:  
Week 16 (April 13th - April 19th, 2021)**

Produced by the National Institute for Public Health and the Environment of the Netherlands - RIVM  
*20 April 2021, 19:00 pm AST*

For general information on surveillance of COVID-19 on the CAS-BES-islands, see the next page.

**Summary**

The incidence of SARS-CoV-2 infections has been dropping on Aruba, Bonaire, and Curaçao, though the situation on Curaçao continues to be worrying. Between April 13th and April 19th, 2021, 833 new COVID-19 cases have been reported on the CAS- and BES-islands: 269 on Aruba, 27 on Bonaire, 518 on Curaçao, and 19 on Dutch St Maarten.

On Aruba, the incidence rate has decreased to 212 cases per 100,000 persons. The positivity rate remains high at 27.0%. With 128 cases per 100,000 residents, Bonaire reported a substantially lower incidence rate as compared to the last few weeks, however, hospital admissions remain high. The positivity rate has decreased to 16.7%. The island has reported a first person to test positive for SARS-CoV-2 after being fully vaccinated. The case had received their second dose of the Pfizer vaccine two weeks before testing positive.

The number of new SARS-CoV-2 cases on Curaçao has reduced substantially. Increased vaccinations and a strict lockdown have played a large role in reducing local transmission. The incidence rate has decreased to 298 cases per 100,000 persons, as compared to 785/100,000 the week before. Curaçao has reported 22 COVID-19-related deaths since last week. Both St Eustatius and Saba have not reported active COVID-19 cases since January 28th.

Surveillance of the circulation of variants on Dutch St Maarten has detected two cases of the B.1.617 (Indian) variant. One sample dates from March and one from April 2021. Both cases are related to recent travel to India. Up to this moment, the incidence rate and hospital admissions have been relatively low as compared to the leeward islands, and no new COVID-19-related deaths have been reported since December 28th, 2020. The proportion of VOC B.1.1.7 has increased substantially (87.0% by week 13). Additionally, 1 case of the VOC B.1.351 (South-Africa) variant and 2 cases of the A.2.5 lineage, often seen in Surinam, have been detected.

Surveillance of the circulation of variants on the leeward islands shows the proportion of VOC B.1.1.7 has increased on Aruba (90.9% in week 14), Bonaire (100% in week 14), and Curaçao (96.8% in week 13). On Aruba, the P.1 (Brazilian) variant, B.1.351 (South African) variant, and various variants circulating in the USA have been detected as well.

The number of patients hospitalized due to/with COVID-19 remains high on the leeward islands. On Curaçao, there are currently 50 patients admitted to the general hospital ward and 32 patients to the ICU. Nine patients are receiving care in Aruba, of which 5 are admitted to the ICU. On Aruba, there are currently 45 patients admitted on the general ward and 17 patients admitted to the ICU. One ICU patient has been transferred from Bonaire, and 4 patients on the general hospital ward have been transferred from Curaçao. In Bonaire, 4 patients are admitted on the general hospital ward and 1 to the ICU. Due to limited hospital capacity, 1 Bonairean patient is receiving care in Aruba and 1 in Colombia. On Dutch St Maarten, there is currently 1 hospitalized patient. At the moment all islands are speeding up and vaccinating at a high rate. It is expected that if a sufficient vaccination coverage is reached, the number of patients and admissions will decrease even further and measures can gradually be phased out again.

**Information on surveillance of COVID-19 on the CAS- and BES-islands**

The Caribbean part of the Kingdom of the Netherlands entails the countries Curaçao, Aruba, and Dutch St Maarten (CAS-islands), as well as the overseas municipalities Bonaire, St Eustatius, and Saba (BES-islands). Surveillance data of SARS-CoV-2 cases is collected on each island in collaboration with local medical professionals, laboratories, and public health departments. These surveillance data are shared by the CAS- and BES-islands through daily updates and stored in the SARS-CoV-2 IHR Daily Overview Dutch Caribbean; an overview of the spread of SARS-CoV-2 on the CAS- and BES-islands.

---

This report has been generated using surveillance data registered at the RIVM between March 22nd 2020 and 19 April 2021. Sometimes surveillance data is reported to the RIVM one or multiple days later than documented on the islands. The data presented in this report are based on the date of registration at the RIVM. Because islands retrospectively correct surveillance data, the crude estimates in this report may differ slightly from the data shared by each island. The data reported here may lag behind in case more recent data has not yet been reported to the RIVM by respective islands.

Everyone with symptoms of COVID-19 can get tested. However, it is plausible that not all individuals with a SARS-CoV-2 infection are tested. The actual numbers of cases can therefore be higher than the numbers reported here. The CAS- and BES-islands also register when individuals with a positive SARS-CoV-2 test result have recovered. These data are used to report the current number of active cases in Table 3. The number of active cases refers to the number of individuals who tested positive for SARS-CoV-2 and who have not yet recovered at the time of producing this report.

### **Disclaimer**

Though this weekly report has been produced with the utmost care, it could possibly contain errors. Feedback on this overview is welcome.

Contact details:

RIVM COVID-19 Surveillance team (e-mail: [COVID-19EPI@rivm.nl](mailto:COVID-19EPI@rivm.nl))

## Table of contents

	Page
1 Overview of reported SARS-CoV-2 cases on the CAS- and BES-islands	4
2 SARS-CoV-2 progression over time	9
3 SARS-CoV-2 three week average incidence rate, progression over time	15

# 1 Overview of reported SARS-CoV-2 cases on the CAS- and BES-islands

Table 1: Number of laboratory confirmed cases with a positive test result for SARS-CoV-2 over the past 2 weeks, as reported to the RIVM by the CAS- and BES-islands

Island	Date: from-until	Number of performed tests	Number of laboratory confirmed tests with positive test result	Positivity rate %
Aruba <sup>1</sup>	05-04-2021 - 11-04-2021	5807	412	7.1
	12-04-2021 - 18-04-2021	4850	274	5.6
Bonaire	05-04-2021 - 11-04-2021	233	57	24.5
	12-04-2021 - 18-04-2021	165	28	17
Curaçao <sup>2</sup>	05-04-2021 - 11-04-2021	7139	1465	20.5
	12-04-2021 - 18-04-2021	4776	527	11
Saba <sup>3</sup>	05-04-2021 - 11-04-2021	-	0	-
	12-04-2021 - 18-04-2021	-	0	-
Sint Eustatius	05-04-2021 - 11-04-2021	109	0	0
	12-04-2021 - 18-04-2021	52	0	0
Sint Maarten <sup>4</sup>	05-04-2021 - 11-04-2021	-	-	-
	12-04-2021 - 18-04-2021	-	-	-

<sup>1</sup> This estimate concerns a crude positivity rate for Aruba. The Directie Volksgezondheid Aruba reports a corrected positivity rate through: <https://www.facebook.com/desparuba>.

<sup>2</sup> The Public Health Department on Curaçao estimates a corrected positivity rate. Therefore, estimates presented here may differ from positivity rates reported by Curaçao.

<sup>3</sup> A '-' value indicates insufficient data was reported to the RIVM to report in this table.

<sup>4</sup> The positivity rate for Dutch St Maarten has been estimated using public data of the weekly number of tests analyzed. Therefore, estimates presented here may differ from positivity rates reported by Dutch St Maarten.

Table 2: Number of laboratory confirmed cases with a positive SARS-CoV-2 test result, number of hospital admissions<sup>1</sup> and number of deceased cases, cumulative and for the previous week, on the CAS- and BES-islands, as reported to RIVM

Island	Cumulative			Previous week <sup>2</sup>	
	Number of cases	Hospital admissions	Deceased patients	Number of cases	Deceased patients
Aruba	10345	494	92	269	0
Bonaire	1522	35	15	27	1
Curaçao	11903	392	90	518	22
Saba	6	1	0	0	0
Sint Eustatius	20	0	0	0	0
Sint Maarten	2207	140	27	19	0
Totaal	26003	1062	224	833	23

<sup>1</sup> The number of hospital admissions cannot be displayed for the previous week due to a delay in reporting these data. The current number of hospitalized COVID-19 patients is reported in Table 3.

<sup>2</sup> These have been reported to the RIVM between April 13th and 19th, 2021.

Table 3: Current number of active SARS-CoV-2 cases and status of COVID-19 hospital admissions on the CAS- and BES-islands, as reported to RIVM<sup>1,2</sup>

Island	Number of active cases	Number of hospitalized patients on general hospital ward	Number of patients hospitalized in the ICU
Aruba	391	23	18
Bonaire	51	4	1
Curaçao	2356	69	37
Saba	0	0	0
Sint Eustatius	0	0	0
Sint Maarten	21	1	0
Totaal	2819	97	56

<sup>1</sup> These have been reported to the RIVM between April 13th and 19th, 2021.

<sup>2</sup> The number of active cases is defined as the number of COVID-19 infected persons who have not been confirmed to have recovered from COVID-19 infection at the time of reporting these data to RIVM. These data may lag behind when islands have limited public health capacity to confirm recovery among infected cases.

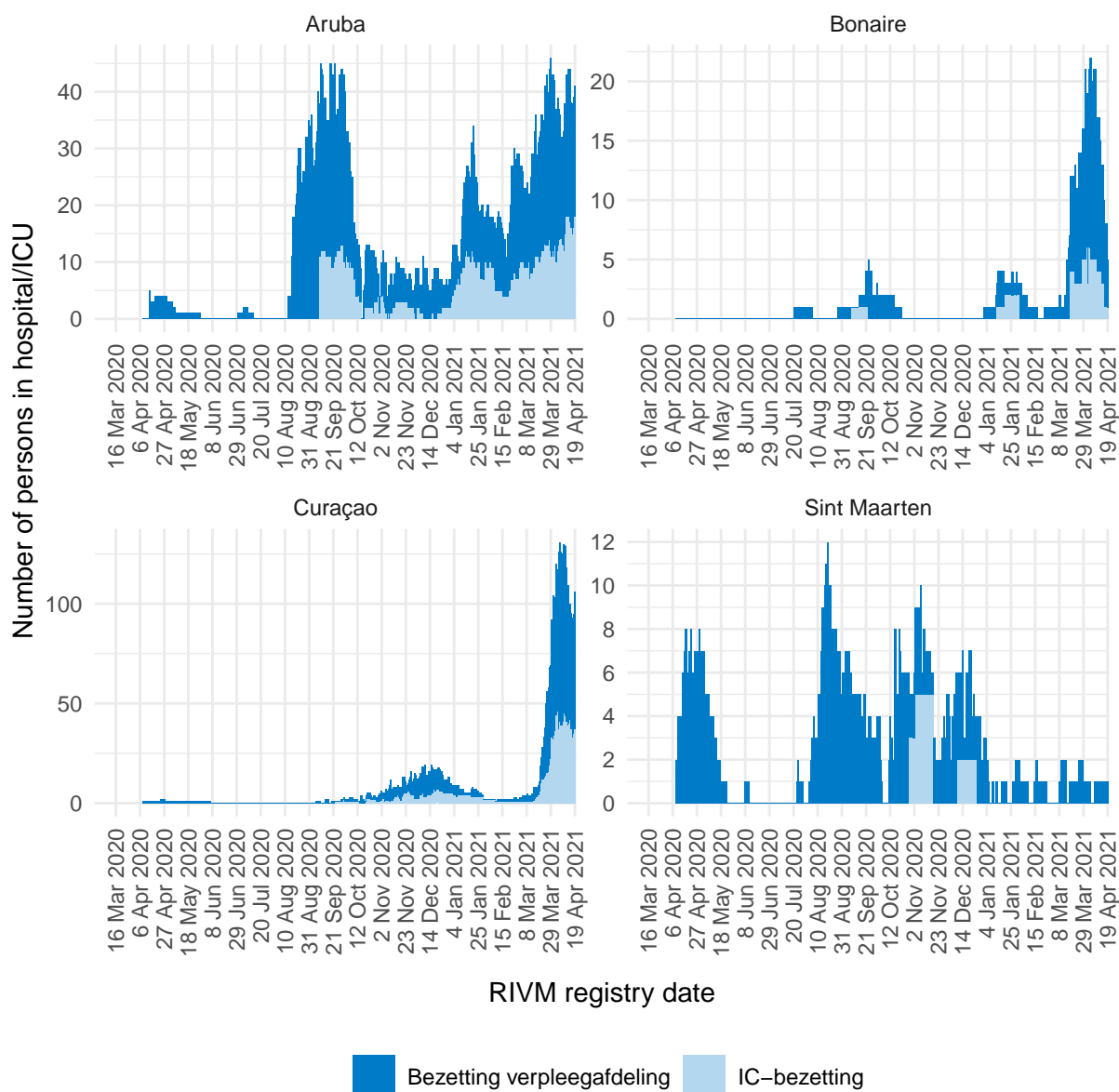


Figure 1: Progression of COVID-related hospital occupation over time <sup>1,2,3,4,5</sup>

<sup>1</sup> This figure presents the number of reported persons who have tested positive for SARS-CoV-2 during or before admission on the general hospital ward and/or ICU.

<sup>2</sup> The light blue data represent the ICU-occupation over time, per island. The dark blue data represent the occupation of the general hospital ward over time, per island.

<sup>3</sup> Due to the low number of hospitalised patients on Saba en St Eustatius, these islands have not been included in this graph.

<sup>4</sup> Based on the most recent data registered for Bonaire, the admission status is unknown for 234 persons who have tested positive for SARS-CoV-2 since January 1st, 2021. These cases have not been included in this graph.

<sup>5</sup> The reported data has been presented by the date of reporting to the RIVM. These numbers can lag behind when the most recent data has not yet been reported to the RIVM.

Table 4: SARS-CoV-2 incidence rate per 100,000 residents on the CAS- and BES-islands<sup>1</sup>, as reported to RIVM

Island	Incidence per 100,000 residents	
	Previous week <sup>2</sup>	Previous two weeks <sup>3</sup>
Aruba	175.3	459.9
Bonaire	94.8	331.7
Curaçao	272.4	989.3
Saba	0.0	0.0
Sint Eustatius	0.0	0.0
Sint Maarten	19.6	76.6

<sup>1</sup> The calculated incidence rates include the estimated number of undocumented migrants on each island, see Table 5.

<sup>2</sup> The incidence rate per 100,000 persons, for the previous week, has been calculated from 13 april 2021 until 19 april 2021.

<sup>3</sup> The incidence rate per 100,000 residents, for the previous two weeks, has been calculated from 6 april 2021 until 19 april 2021.

Table 5: Number of residents and acreage of the CAS- and BES-islands<sup>1</sup>

Island	Capital city	Residents	Acreage	Political status
Aruba	Oranjestad	106.800	180 km <sup>2</sup>	Country within the Kingdom of The Netherlands
Bonaire	Kralendijk	20.900	288 km <sup>2</sup>	Dutch municipality
Curaçao	Willemstad	164.100	444 km <sup>2</sup>	Country within the Kingdom of The Netherlands
Saba	The Bottom	1.915	13 km <sup>2</sup>	Dutch municipality
Sint Maarten	Philipsburg	44.000	34 km <sup>2</sup>	Country within the Kingdom of The Netherlands
Sint Eustatius	Oranjestad	3.138	21 km <sup>2</sup>	Dutch municipality

<sup>1</sup> Each island counts a substantial population of undocumented migrants. The reported incidence rates include the estimated population of undocumented migrants. On Aruba, Curaçao, and Dutch St Maarten the population size is estimated around 20,000 migrants. On Bonaire the population size is estimated around 1,000 migrants. These data are relevant to include as these populations are difficult to reach for local public health services and often have less access to curative care.



## 2 SARS-CoV-2 progression over time

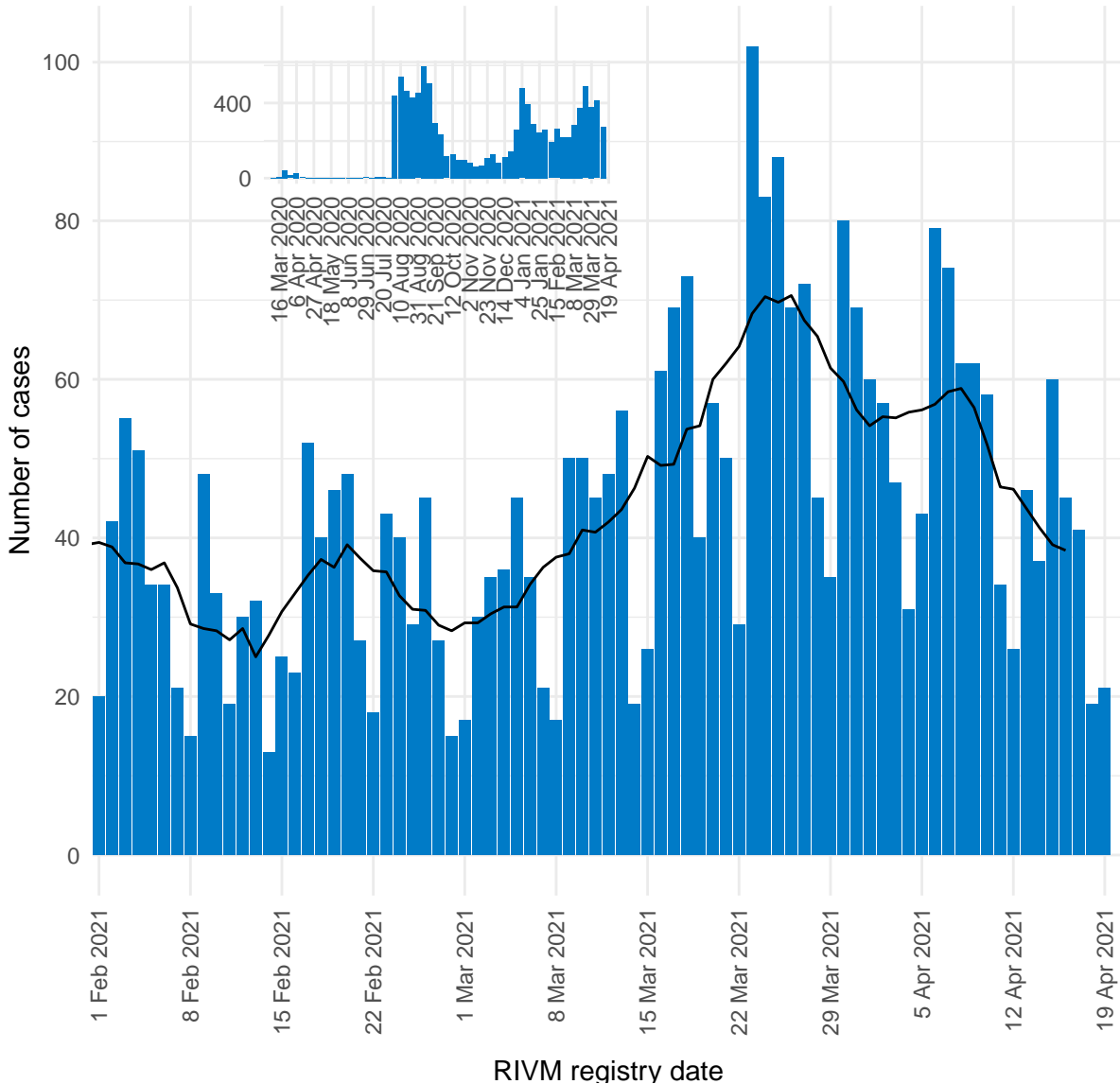


Figure 2: Number of daily reported SARS-CoV-2 cases on Aruba, presented by RIVM registry date<sup>1,2</sup>.

<sup>1</sup> This figure displays the daily number of new SARS-CoV-2 by date of reporting to the RIVM. The black line represents the 7-day moving average of new infections. The vertical axes of figures 1-6 differ due to dissimilarities in the quantity of cases between the islands.

<sup>2</sup> The reported data has been presented by the date of reporting to the RIVM. These numbers can lag behind when the most recent data has not yet been reported to the RIVM.

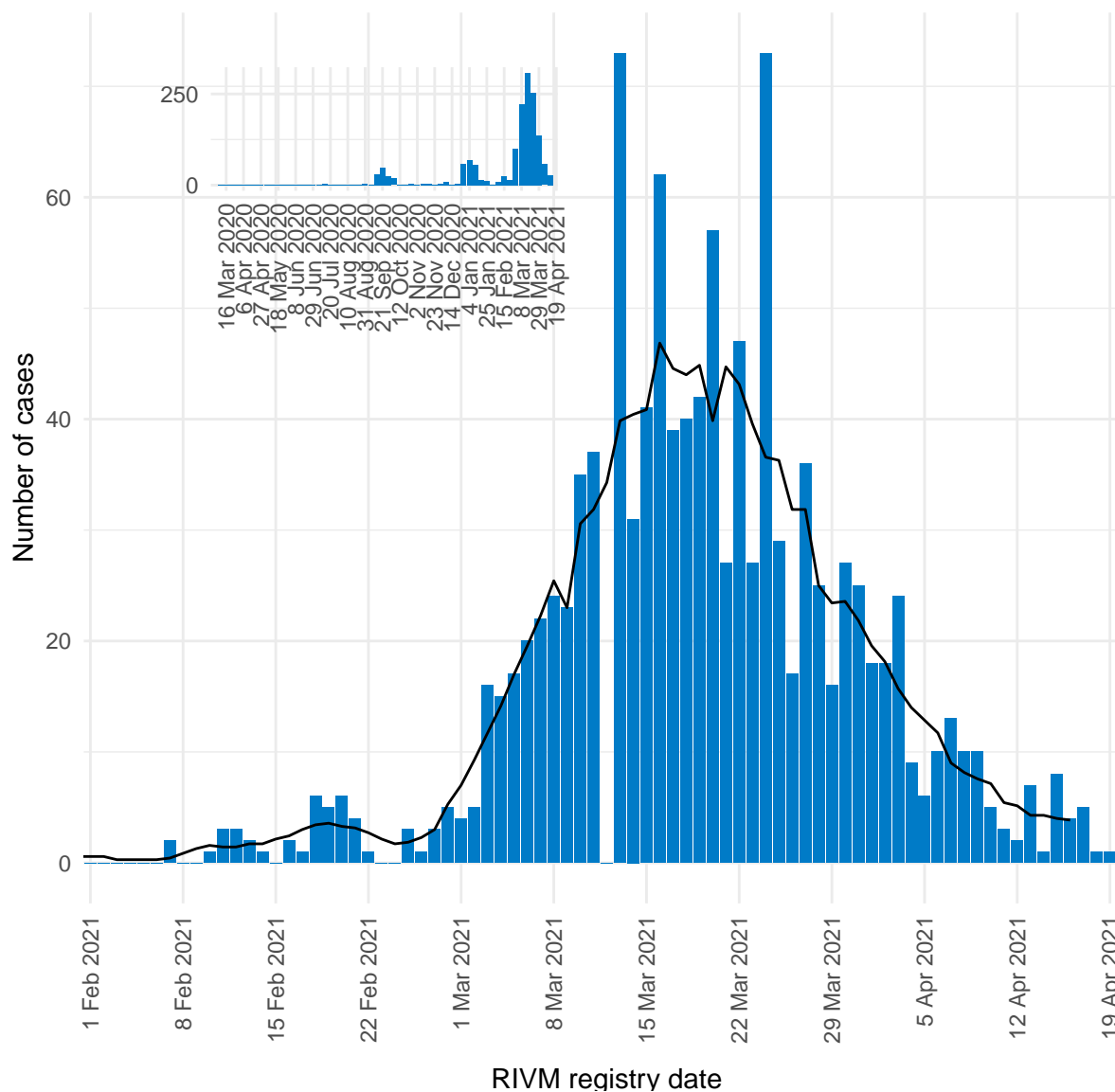


Figure 3: Number of daily reported SARS-CoV-2 cases on Bonaire, presented by RIVM registry date<sup>1,2</sup>.

<sup>1</sup> This figure displays the daily number of new SARS-CoV-2 by date of reporting to the RIVM. The black line represents the 7-day moving average of new infections. The vertical axes of figures 1-6 differ due to dissimilarities in the quantity of cases between the islands.

<sup>2</sup> The reported data has been presented by the date of reporting to the RIVM. These numbers can lag behind when the most recent data has not yet been reported to the RIVM.

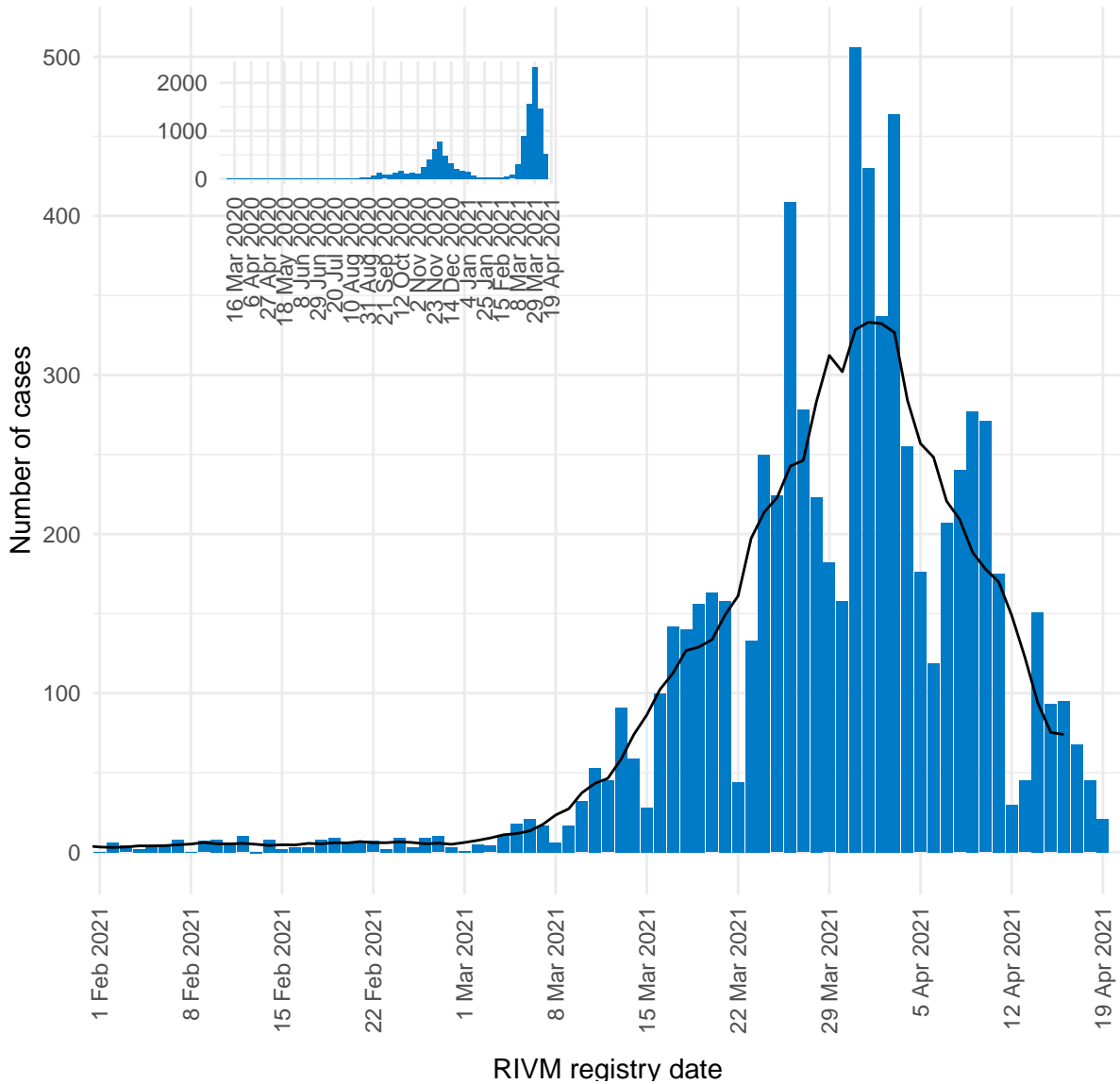


Figure 4: Number of daily reported SARS-CoV-2 cases on Curaçao, presented by RIVM registry date<sup>1,2</sup>.

<sup>1</sup> This figure displays the daily number of new SARS-CoV-2 by date of reporting to the RIVM. The black line represents the 7-day moving average of new infections. The vertical axes of figures 1-6 differ due to dissimilarities in the quantity of cases between the islands.

<sup>2</sup> The reported data has been presented by the date of reporting to the RIVM. These numbers can lag behind when the most recent data has not yet been reported to the RIVM.

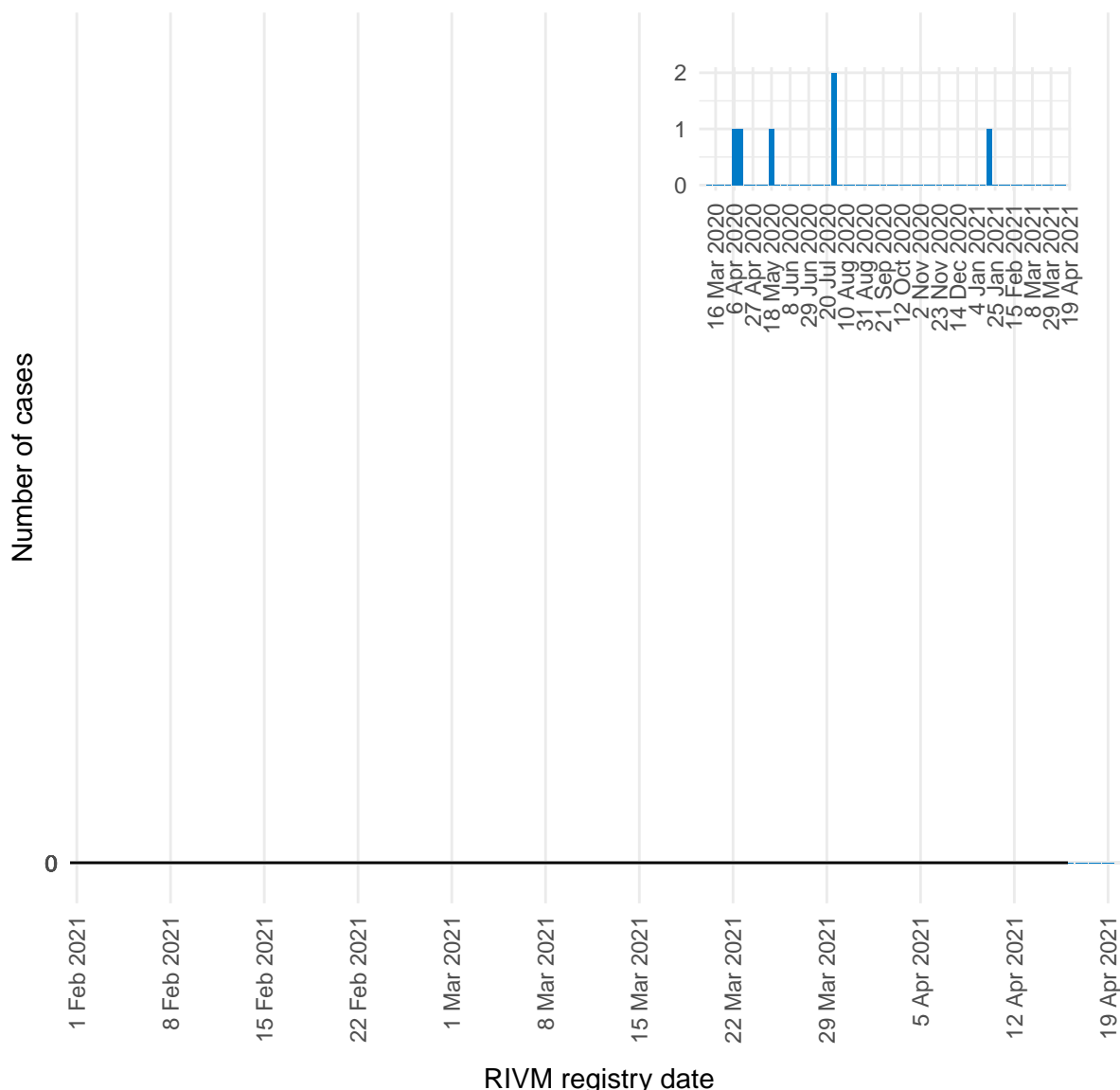


Figure 5: Number of daily reported SARS-CoV-2 cases on Saba, presented by RIVM registry date<sup>1,2</sup>.

<sup>1</sup> This figure displays the daily number of new SARS-CoV-2 by date of reporting to the RIVM. The black line represents the 7-day moving average of new infections. The vertical axes of figures 1-6 differ due to dissimilarities in the quantity of cases between the islands.

<sup>2</sup> The reported data has been presented by the date of reporting to the RIVM. These numbers can lag behind when the most recent data has not yet been reported to the RIVM.

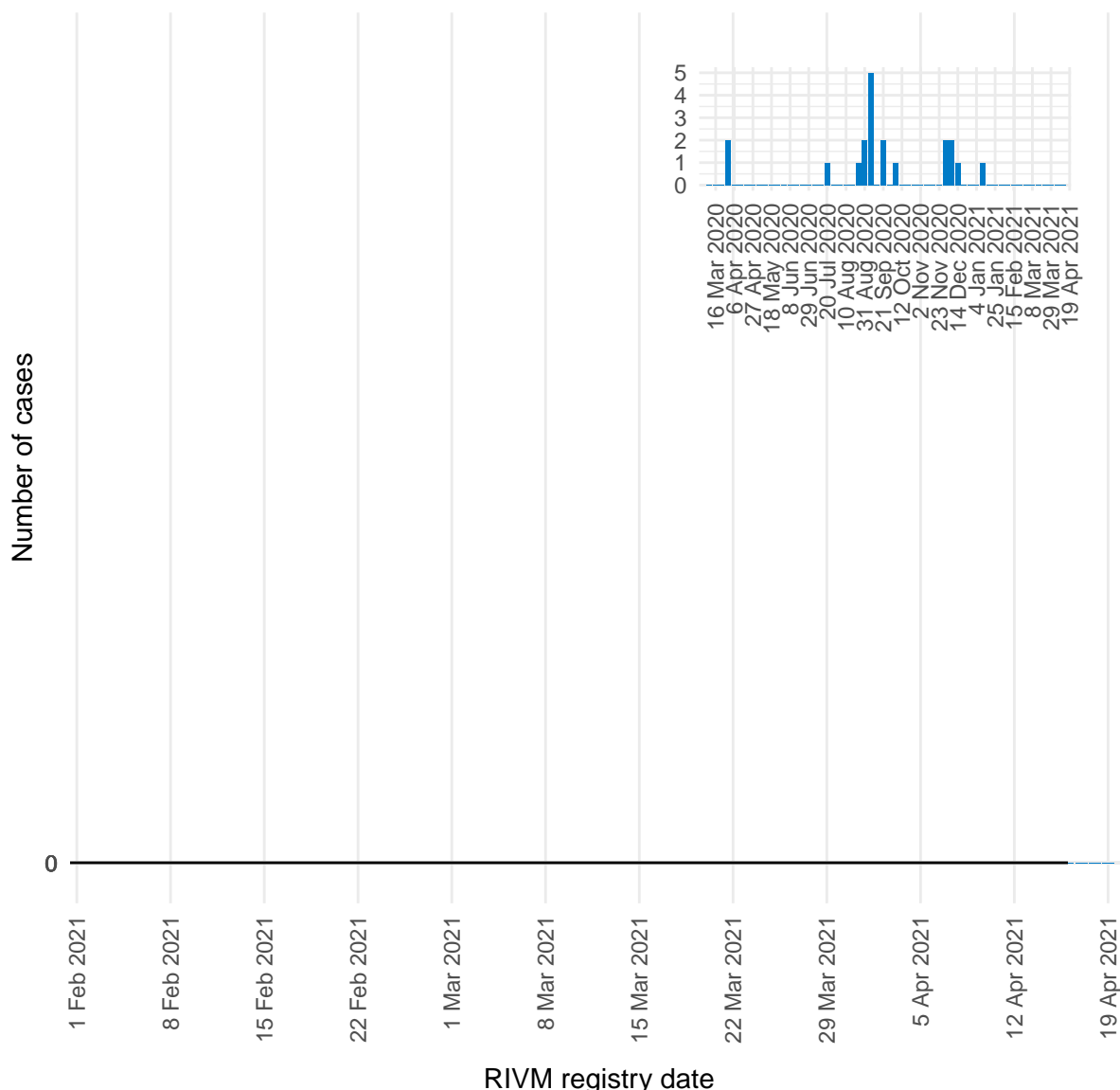


Figure 6: Number of daily reported SARS-CoV-2 cases on St Eustatius, presented by RIVM registry date<sup>1,2</sup>.

<sup>1</sup> This figure displays the daily number of new SARS-CoV-2 by date of reporting to the RIVM. The black line represents the 7-day moving average of new infections. The vertical axes of figures 1-6 differ due to dissimilarities in the quantity of cases between the islands.

<sup>2</sup> The reported data has been presented by the date of reporting to the RIVM. These numbers can lag behind when the most recent data has not yet been reported to the RIVM.

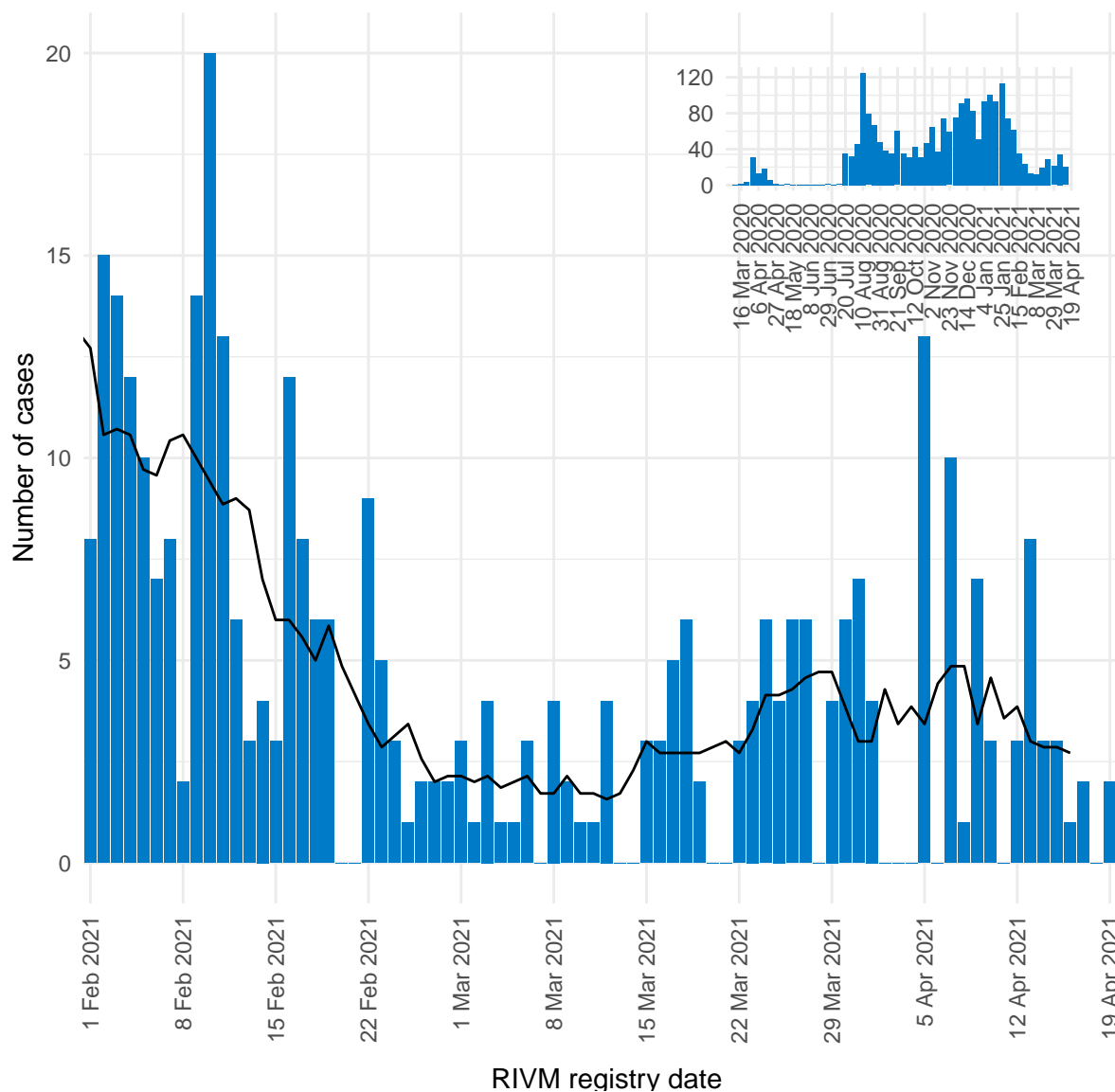


Figure 7: Number of daily reported SARS-CoV-2 cases on Dutch St Maarten, presented by RIVM registry date<sup>1,2</sup>.

<sup>1</sup> This figure displays the daily number of new SARS-CoV-2 by date of reporting to the RIVM. The black line represents the 7-day moving average of new infections. The vertical axes of figures 1-6 differ due to dissimilarities in the quantity of cases between the islands.

<sup>2</sup> The reported data has been presented by the date of reporting to the RIVM. These numbers can lag behind when the most recent data has not yet been reported to the RIVM.

### 3 SARS-CoV-2 three week average incidence rate, progression over time

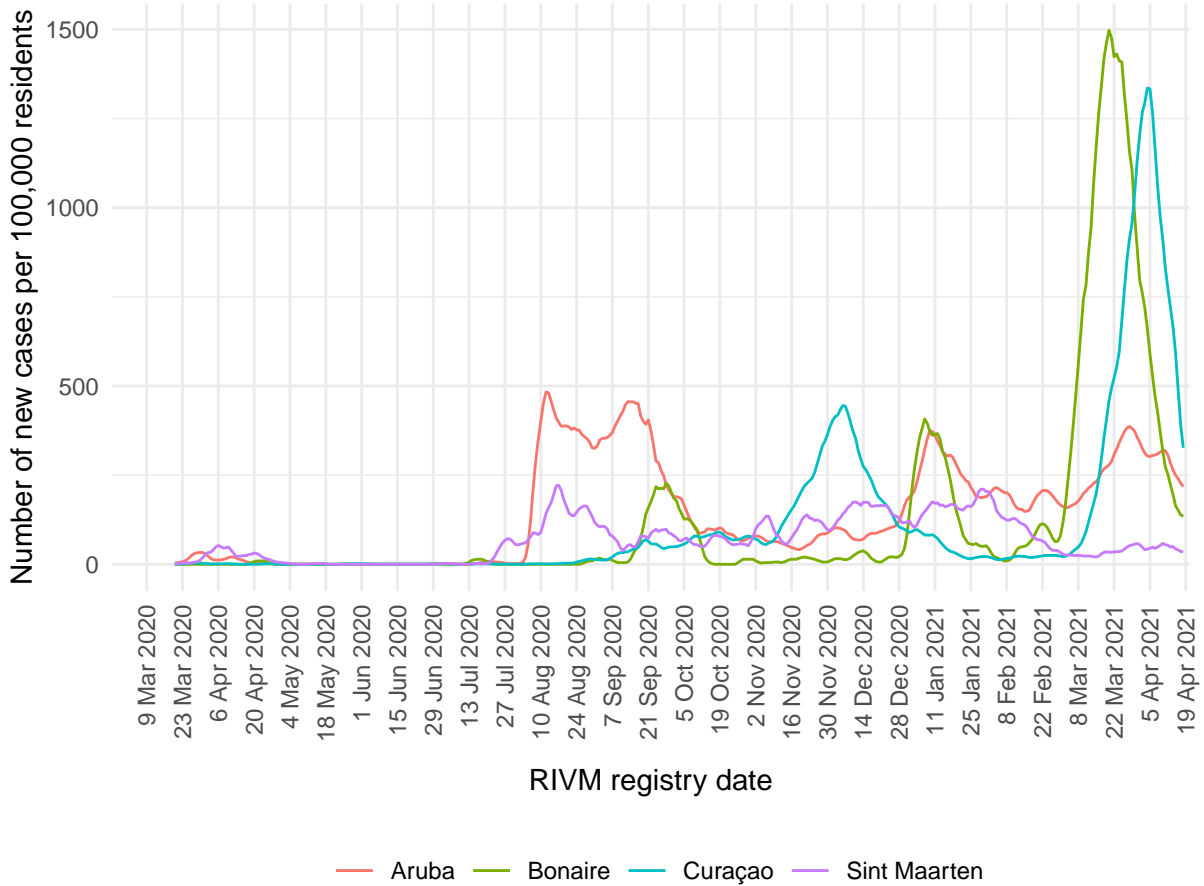


Figure 8: Three week average number of reported cases per 100,000 residents by RIVM registry date, on Curaçao, Aruba, Dutch St Maarten, and Bonaire<sup>1,2</sup>.

<sup>1</sup> This figure displays the 3-week average incidence rate per island per 100,000 residents, including the population of undocumented migrants on each island. Each line on the vertical axis indicates a weekly average of the incidence rate (defined as the number of new cases per 100,000 persons per week, over the total population) over a period of three weeks. For example: the reported value on January 4th 2021, is the weekly average of the incidence rate between December 28th, 2020 and January 11th, 2021.

<sup>2</sup> Due to the small number of reported cases on Saba and St Eustatius, these islands have not been included in this figure.