



**National Institute for Public Health
and the Environment**
Ministry of Health, Welfare and Sport

**Epidemiological report of SARS-CoV-2 on the Dutch Caribbean CAS- and BES-islands:
Week 19 (May 4th - May 10th, 2021)**

Produced by the National Institute for Public Health and the Environment of the Netherlands - RIVM
11 May 2021, 19:00 pm AST

For general information on surveillance of COVID-19 on the CAS-BES-islands, see the next page.

Summary

Between May 4th and May 10th, 2021, 170 new COVID-19 cases have been reported on the CAS- and BES-islands: 102 on Aruba, 22 on Bonaire, 23 on Curaçao, and 23 on Dutch St Maarten. The number of patients hospitalized due to/with COVID-19 has reduced substantially on the leeward islands, reducing the pressure on local healthcare capacity. As a result, elective care is being scaled up on the leeward islands. Curaçao has reported 5 COVID-19-related deaths since last week, Aruba 2, and Bonaire 1. Since the start of the epidemic, 116 persons have passed from COVID-19 in Curaçao, 102 in Aruba, 27 in Sint Maarten, and 17 in Bonaire.

In the past week, Aruba reported 81 new SARS-COV-2 infections per 100,000 persons. There are currently 9 patients admitted on the general ward and 5 patients admitted to the ICU. In one week time, 2 persons have passed from/with COVID-19 on the island. The proportion of VOC B.1.1.7 (UK) has decreased (57.1% week 17), although the proportion of VOC P.1 (Brazil) has increased to 14.3% (week 17). The VOI B.1.621 (Colombia), VOC B.1.617.2 (India), VOC B.1.351 (South Africa), and other variants circulating in the U.S. have been detected on Aruba in the past months. Aruba has relaxed precautionary measures as of May 10th. The night curfew has been relaxed to midnight, group gatherings outside are permitted again, and the maximum table occupancy in restaurants has been relaxed. As of May 10th 2021, 30,681 persons have had their first dose of their vaccine administered and 24,937 persons are fully vaccinated (56.3% of adult population).

The incidence rate on Bonaire has increased to 97 cases per 100,000 residents, as compared to 26/100,000 a week before (May 3rd, 2021). The positivity rate on Bonaire has increased from 5.4% to 11.8%. There are currently no COVID-related hospital admissions. There have also not been reports of any new clusters. Surveillance on circulation of variants on Bonaire shows the proportion of VOC B.1.1.7 (UK) was 93.0% by week 15. As of May 10th, 12,916 persons have had their first dose of the vaccine administered and 6,852 persons are fully vaccinated (68.2% adult population).

The number of new SARS-CoV-2 cases on Curaçao has been relatively low since three weeks, reporting an incidence rate of 13 cases per 100,000 persons last week. COVID-related hospital admissions and mortality have reduced over the past few weeks. As of last week, Curaçao reported 5 new COVID-related deaths. There are currently 11 patients admitted to the general hospital ward and 20 patients to the ICU. Surveillance on circulation of variants on Curaçao has detected the first case of the VOC P.1 (Brazil), VOI B.1617.1 (India), and VOI B.1.621 (Colombia) on the island, and the proportion of VOC B.1.1.7 (UK) remains high (92.0% in week 16). Epidemiological information on these cases will follow. As of May 10th, certain preventative measures have been relaxed, but the curfew remains in place (21:00). As of May 2nd, 44,565 persons have received their first dose of the vaccine and a total of 32,769 persons have been fully vaccinated (55.9% adult population).

Dutch Sint Maarten reports an incidence rate (41 cases per 100,000 residents), nearly twice as high as two weeks earlier (23/100,000). The number of hospitalized patients (2) remains relatively low. On Dutch St Maarten, the proportion of VOC B.1.1.7 remains high (80,0% in week 17). Furthermore, the VOI B.1.617/B1.617.1 (India) variant, VOC B.1.351 (South Africa), VOI P.2 (Brazil), and 2 cases of the A.2.5 (often seen in Surinam) have been detected on the island. As of May 10th, 4,874 persons have received their first vaccine, and a total of 10,234 persons have been fully vaccinated on the Dutch side of the island (27.0% adult population).

On Saba, there is currently one active SARS-CoV-2 case. Since May 1st, the borders have been reopened. There are specific rules for incoming travellers, depending on their vaccination status. As of May 10th, 42 persons

have received their first vaccine, and a total of 1,354 persons have been fully vaccinated on the island (89.2% adult population).

St Eustatius has not reported any active COVID-19 cases since January 28th. As of May 10th, 129 persons have received their first vaccine, and a total of 921 persons have been fully vaccinated on the island (43.6% adult population).

Information on surveillance of COVID-19 on the CAS- and BES-islands

The Caribbean part of the Kingdom of the Netherlands entails the countries Curaçao, Aruba, and Dutch St Maarten (CAS-islands), as well as the overseas municipalities Bonaire, St Eustatius, and Saba (BES-islands). Surveillance data of SARS-CoV-2 cases is collected on each island in collaboration with local medical professionals, laboratories, and public health departments. These surveillance data are shared by the CAS- and BES-islands through daily updates and stored in the SARS-CoV-2 IHR Daily Overview Dutch Caribbean; an overview of the spread of SARS-CoV-2 on the CAS- and BES-islands.

This report has been generated using surveillance data registered at the RIVM between March 22nd 2020 and 10 May 2021. Sometimes surveillance data is reported to the RIVM one or multiple days later than documented on the islands. The data presented in this report are based on the date of registration at the RIVM. Because islands retrospectively correct surveillance data, the crude estimates in this report may differ slightly from the data shared by each island. The data reported here may lag behind in case more recent data has not yet been reported to the RIVM by respective islands.

Everyone with symptoms of COVID-19 can get tested. However, it is plausible that not all individuals with a SARS-CoV-2 infection are tested. The actual numbers of cases can therefore be higher than the numbers reported here. The CAS- and BES-islands also register when individuals with a positive SARS-CoV-2 test result have recovered. These data are used to report the current number of active cases in Table 3. The number of active cases refers to the number of individuals who tested positive for SARS-CoV-2 and who have not yet recovered at the time of producing this report.

Disclaimer

Though this weekly report has been produced with the utmost care, it could possibly contain errors. Feedback on this overview is welcome.

Contact details:

RIVM COVID-19 Surveillance team (e-mail: CASBES-epi@rivm.nl)

Table of contents

	Page
1 Overview of reported SARS-CoV-2 cases on the CAS- and BES-islands	4
2 SARS-CoV-2 progression over time	9
3 SARS-CoV-2 three week average incidence rate, progression over time	15

1 Overview of reported SARS-CoV-2 cases on the CAS- and BES-islands

Table 1: Number of laboratory confirmed cases with a positive test result for SARS-CoV-2 over the past 2 weeks, as reported to the RIVM by the CAS- and BES-islands

Island	Date: from-until	Number of performed tests	Number of laboratory confirmed tests with positive test result	Positivity rate %
Aruba ¹	26-04-2021 - 02-05-2021	4369	132	3
	03-05-2021 - 09-05-2021	4192	100	2.4
Bonaire	26-04-2021 - 02-05-2021	93	5	5.4
	03-05-2021 - 09-05-2021	201	22	10.9
Curaçao ²	26-04-2021 - 02-05-2021	4047	91	2.2
	03-05-2021 - 09-05-2021	4107	25	0.6
Saba ³	26-04-2021 - 02-05-2021	-	1	-
	03-05-2021 - 09-05-2021	-	0	-
Sint Eustatius	26-04-2021 - 02-05-2021	176	0	0
	03-05-2021 - 09-05-2021	0	0	-
Sint Maarten ⁴	26-04-2021 - 02-05-2021	-	-	-
	03-05-2021 - 09-05-2021	49	30	61.2

¹ This estimate concerns a crude positivity rate for Aruba. The Directie Volksgezondheid Aruba reports a corrected positivity rate through: <https://www.facebook.com/desparuba>.

² The Public Health Department on Curaçao estimates a corrected positivity rate. Therefore, estimates presented here may differ from positivity rates reported by Curaçao.

³ A '-' value indicates insufficient data was reported to the RIVM to report in this table.

⁴ The positivity rate for Dutch St Maarten has been estimated using public data of the weekly number of tests analyzed. Therefore, estimates presented here may differ from positivity rates reported by Dutch St Maarten.

Table 2: Number of laboratory confirmed cases with a positive SARS-CoV-2 test result, number of hospital admissions¹ and number of deceased cases, cumulative and for the previous week, on the CAS- and BES-islands, as reported to RIVM

Island	Cumulative			Previous week ²	
	Number of cases	Hospital admissions	Deceased patients	Number of cases	Deceased patients
Aruba	10781	499	102	102	2
Bonaire	1556	36	17	22	1
Curaçao	12236	394	116	23	5
Saba	7	1	0	0	0
Sint Eustatius	20	0	0	0	0
Sint Maarten	2263	141	27	23	0
Total	26863	1071	262	170	8

¹ The number of hospital admissions cannot be displayed for the previous week due to a delay in reporting these data. The current number of hospitalized COVID-19 patients is reported in Table 3.

² These have been reported to the RIVM between May 4th and May 10th, 2021.

Table 3: Current number of active SARS-CoV-2 cases and status of COVID-19 hospital admissions on the CAS- and BES-islands, as reported to RIVM^{1,2}

Island	Number of active cases	Number of hospitalized patients on general hospital ward	Number of patients hospitalized in the ICU
Aruba	92	4	5
Bonaire	20	0	0
Curaçao	148	11	20
Saba	1	0	0
Sint Eustatius	0	0	0
Sint Maarten	30	2	0
Total	291	17	25

¹ These have been reported to the RIVM between May 4th and May 10th, 2021.

² The number of active cases is defined as the number of COVID-19 infected persons who have not been confirmed to have recovered from COVID-19 infection at the time of reporting these data to RIVM. These data may lag behind when islands have limited public health capacity to confirm recovery among infected cases.

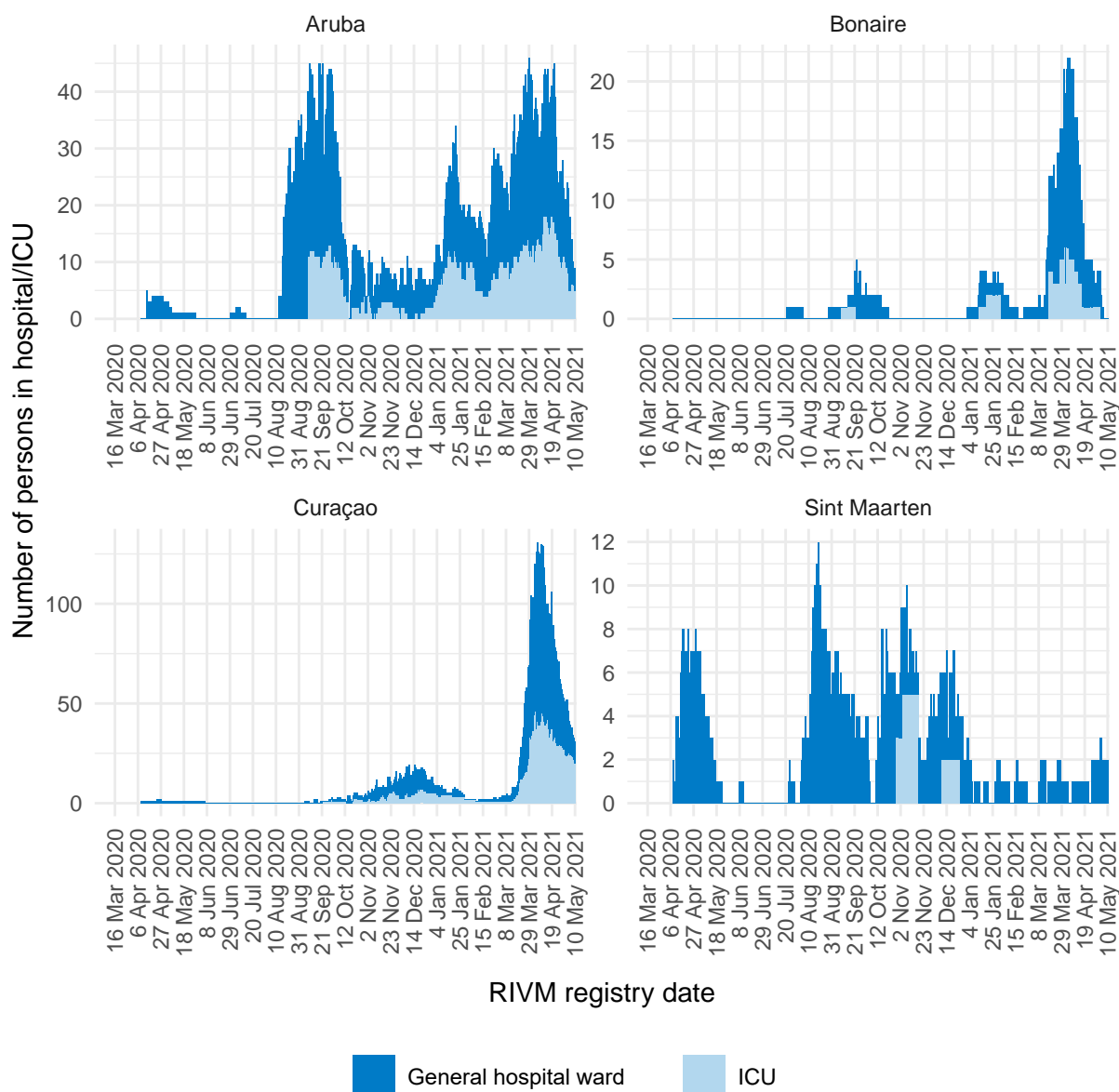


Figure 1: Progression of COVID-related hospital occupation over time ^{1,2,3,4,5}

¹ This figure presents the number of reported persons who have tested positive for SARS-CoV-2 during or before admission on the general hospital ward and/or ICU.

² The light blue data represent the ICU-occupation over time, per island. The dark blue data represent the occupation of the general hospital ward over time, per island.

³ Due to the low number of hospitalised patients on Saba en St Eustatius, these islands have not been included in this graph.

⁴ Based on the most recent data registered for Bonaire, the admission status is unknown for 234 persons who have tested positive for SARS-CoV-2 since January 1st, 2021. These cases have not been included in this graph.

⁵ The reported data has been presented by the date of reporting to the RIVM. These numbers can lag behind when the most recent data has not yet been reported to the RIVM.

Table 4: SARS-CoV-2 incidence rate per 100,000 residents on the CAS- and BES-islands¹, as reported to RIVM

Island	Incidence per 100,000 residents	
	Previous week ²	Previous two weeks ³
Aruba	61.5	168.4
Bonaire	96.7	114.3
Curaçao	11.1	52.6
Saba	0.0	52.1
Sint Eustatius	0.0	0.0
Sint Maarten	35.6	76.6

¹ The calculated incidence rates include the estimated number of undocumented migrants on each island, see Table 5.

² The incidence rate per 100,000 persons, for the previous week, has been calculated from 4 May 2021 until 10 May 2021.

³ The incidence rate per 100,000 residents, for the previous two weeks, has been calculated from 27 April 2021 until 10 May 2021.

Table 5: Number of residents and acreage of the CAS- and BES-islands¹

Island	Capital city	Residents	Acreage	Political status
Aruba	Oranjestad	112.182	180 km ²	Country within the Kingdom of The Netherlands
Bonaire	Kralendijk	21.745	288 km ²	Dutch municipality
Curaçao	Willemstad	155.223	444 km ²	Country within the Kingdom of The Netherlands
Saba	The Bottom	1.918	13 km ²	Dutch municipality
Sint Maarten	Philipsburg	41.109	34 km ²	Country within the Kingdom of The Netherlands
Sint Eustatius	Oranjestad	3.142	21 km ²	Dutch municipality

¹ Each island counts a substantial population of undocumented migrants. The reported incidence rates include the estimated population of undocumented migrants. On Aruba, Curaçao, and Dutch St Maarten the population size is estimated around 15,000 migrants. On Bonaire the population size is estimated around 1,000 migrants. These data are relevant to include as these populations are difficult to reach for local public health services and often have less access to curative care.

2 SARS-CoV-2 progression over time

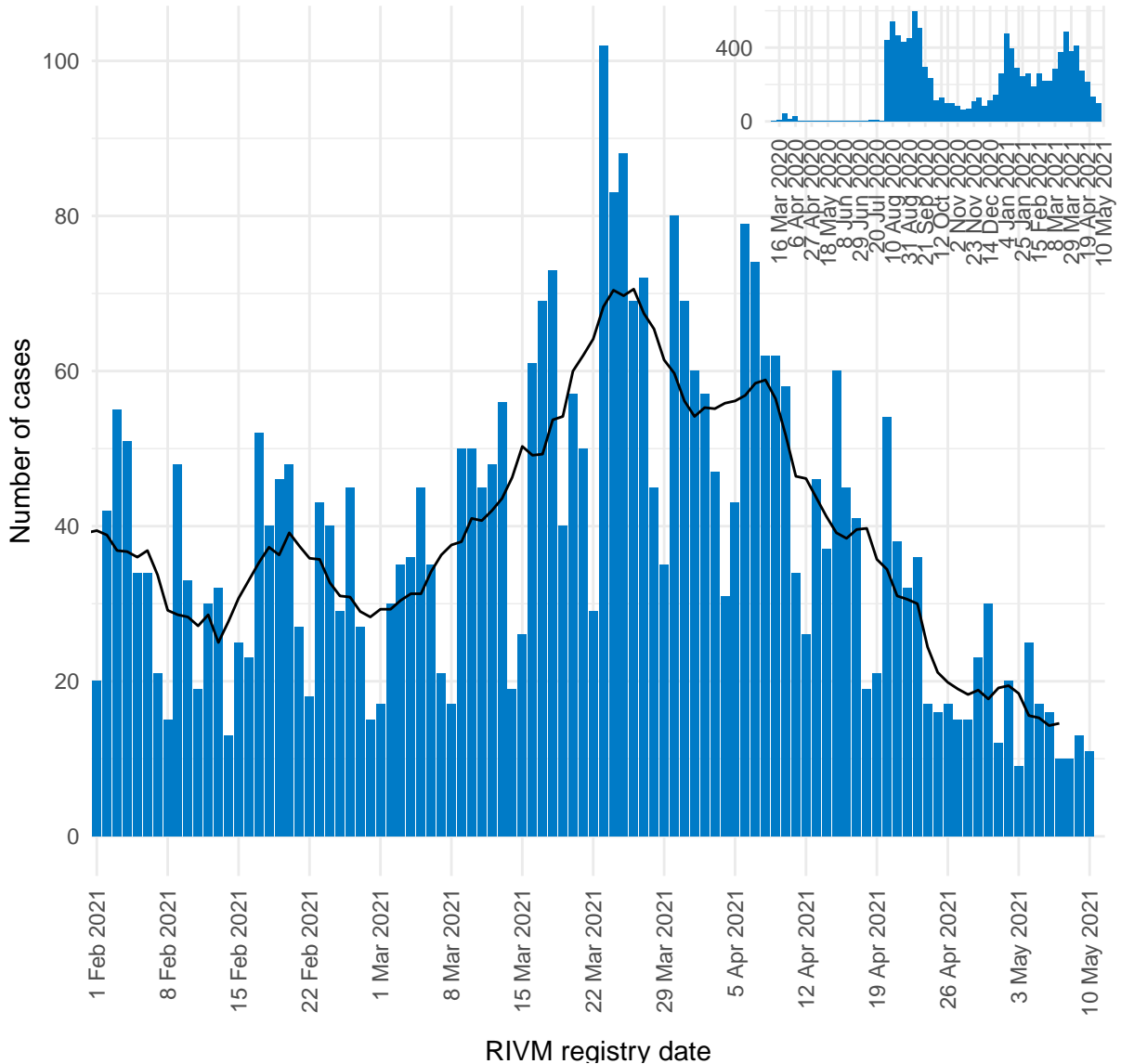


Figure 2: Number of daily reported SARS-CoV-2 cases on Aruba, presented by RIVM registry date^{1,2}.

¹ This figure displays the daily number of new SARS-CoV-2 by date of reporting to the RIVM. The black line represents the 7-day moving average of new infections. The vertical axes of figures 1-6 differ due to dissimilarities in the quantity of cases between the islands.

² The reported data has been presented by the date of reporting to the RIVM. These numbers can lag behind when the most recent data has not yet been reported to the RIVM.

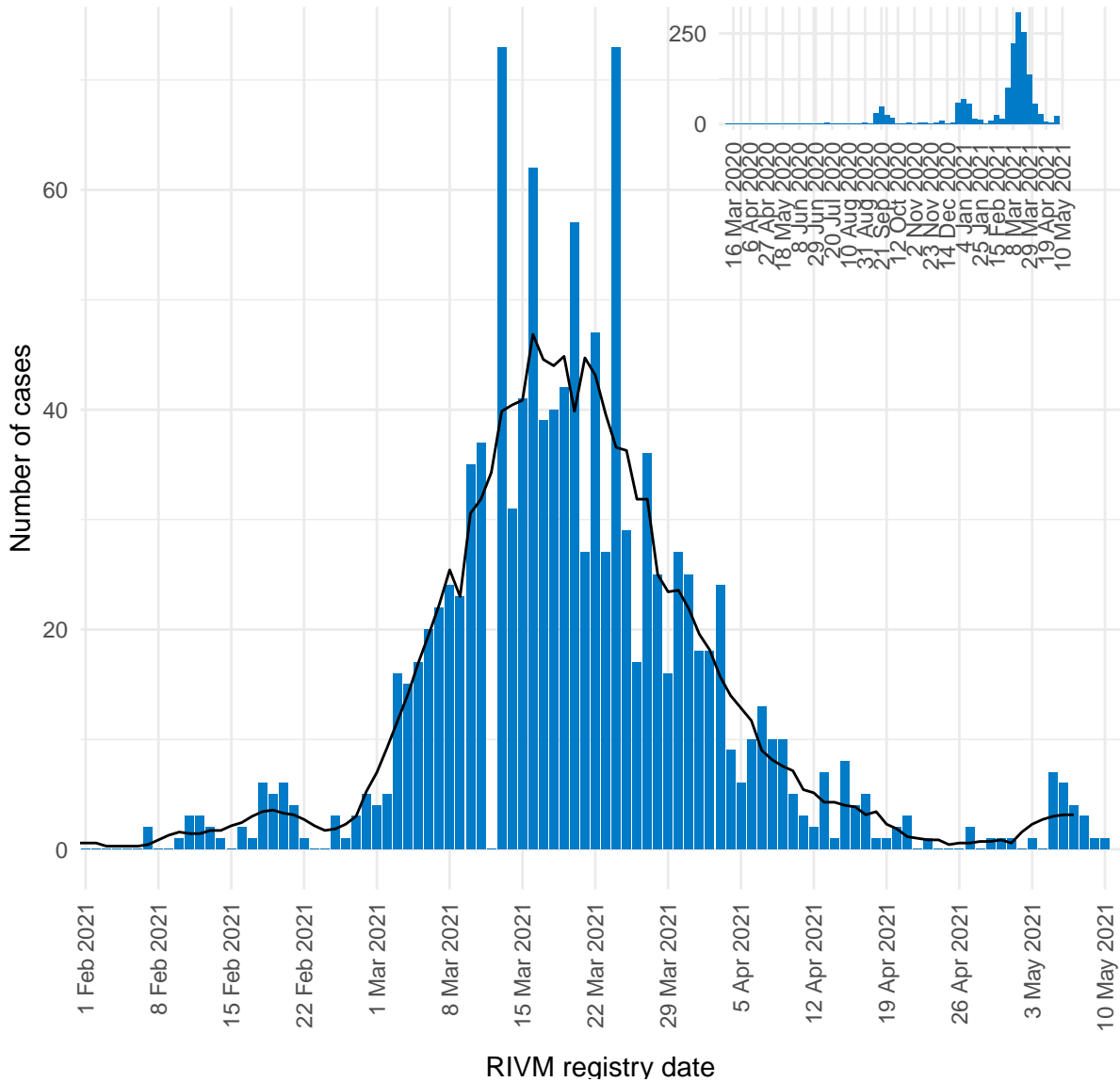


Figure 3: Number of daily reported SARS-CoV-2 cases on Bonaire, presented by RIVM registry date^{1,2}.

¹ This figure displays the daily number of new SARS-CoV-2 by date of reporting to the RIVM. The black line represents the 7-day moving average of new infections. The vertical axes of figures 1-6 differ due to dissimilarities in the quantity of cases between the islands.

² The reported data has been presented by the date of reporting to the RIVM. These numbers can lag behind when the most recent data has not yet been reported to the RIVM.

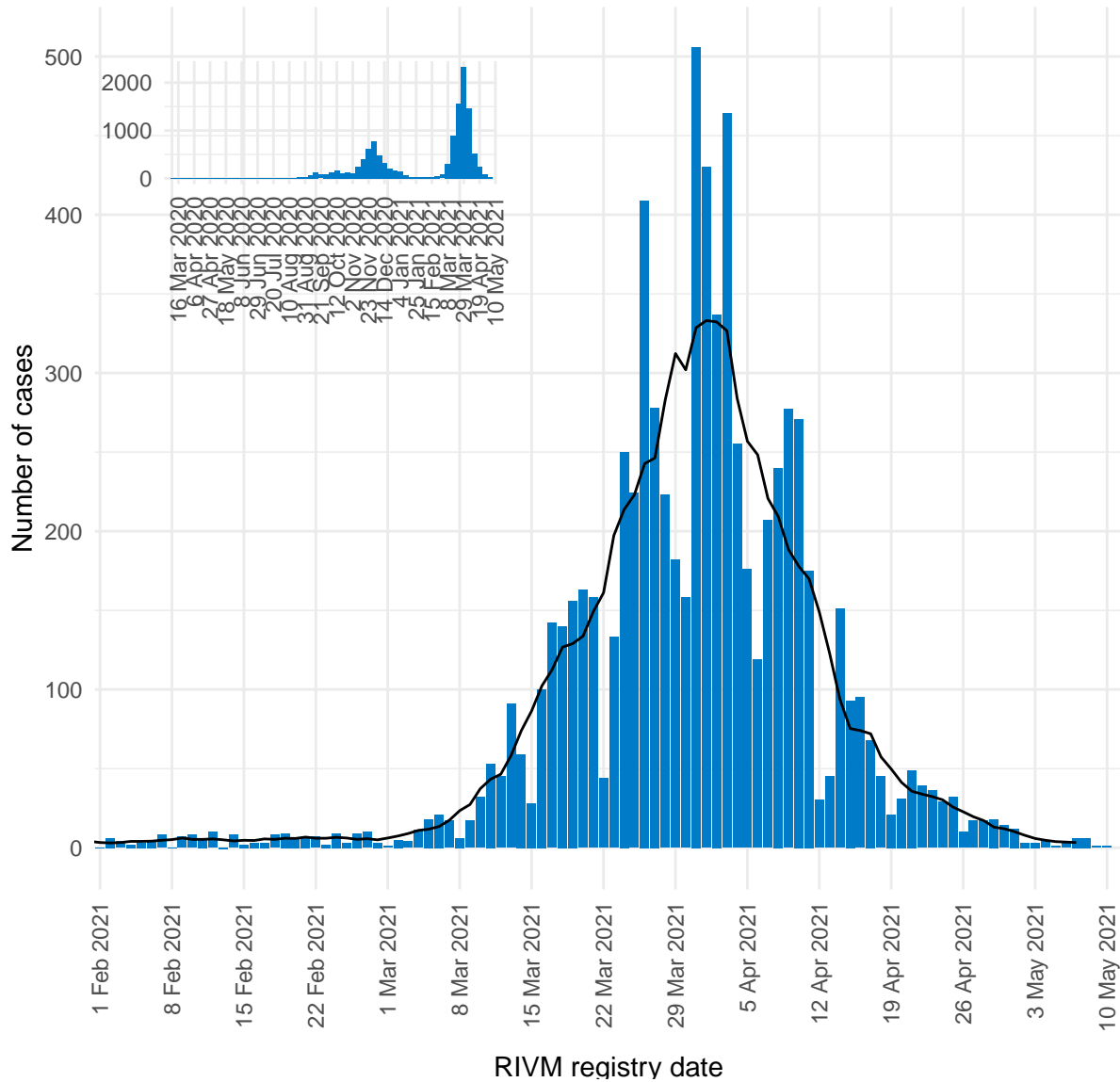


Figure 4: Number of daily reported SARS-CoV-2 cases on Curaçao, presented by RIVM registry date^{1,2}.

¹ This figure displays the daily number of new SARS-CoV-2 by date of reporting to the RIVM. The black line represents the 7-day moving average of new infections. The vertical axes of figures 1-6 differ due to dissimilarities in the quantity of cases between the islands.

² The reported data has been presented by the date of reporting to the RIVM. These numbers can lag behind when the most recent data has not yet been reported to the RIVM.

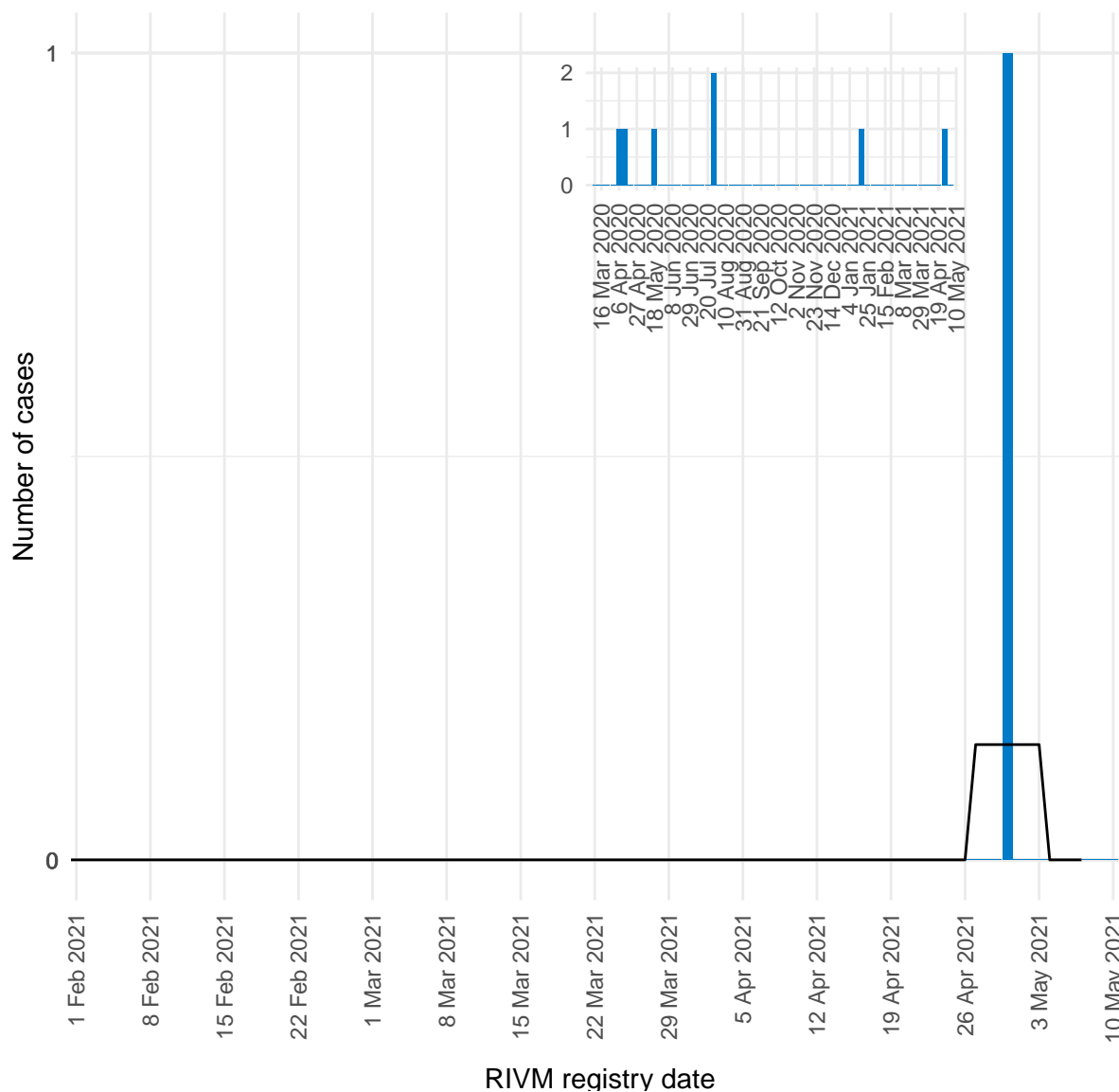


Figure 5: Number of daily reported SARS-CoV-2 cases on Saba, presented by RIVM registry date^{1,2}.

¹ This figure displays the daily number of new SARS-CoV-2 by date of reporting to the RIVM. The black line represents the 7-day moving average of new infections. The vertical axes of figures 1-6 differ due to dissimilarities in the quantity of cases between the islands.

² The reported data has been presented by the date of reporting to the RIVM. These numbers can lag behind when the most recent data has not yet been reported to the RIVM.

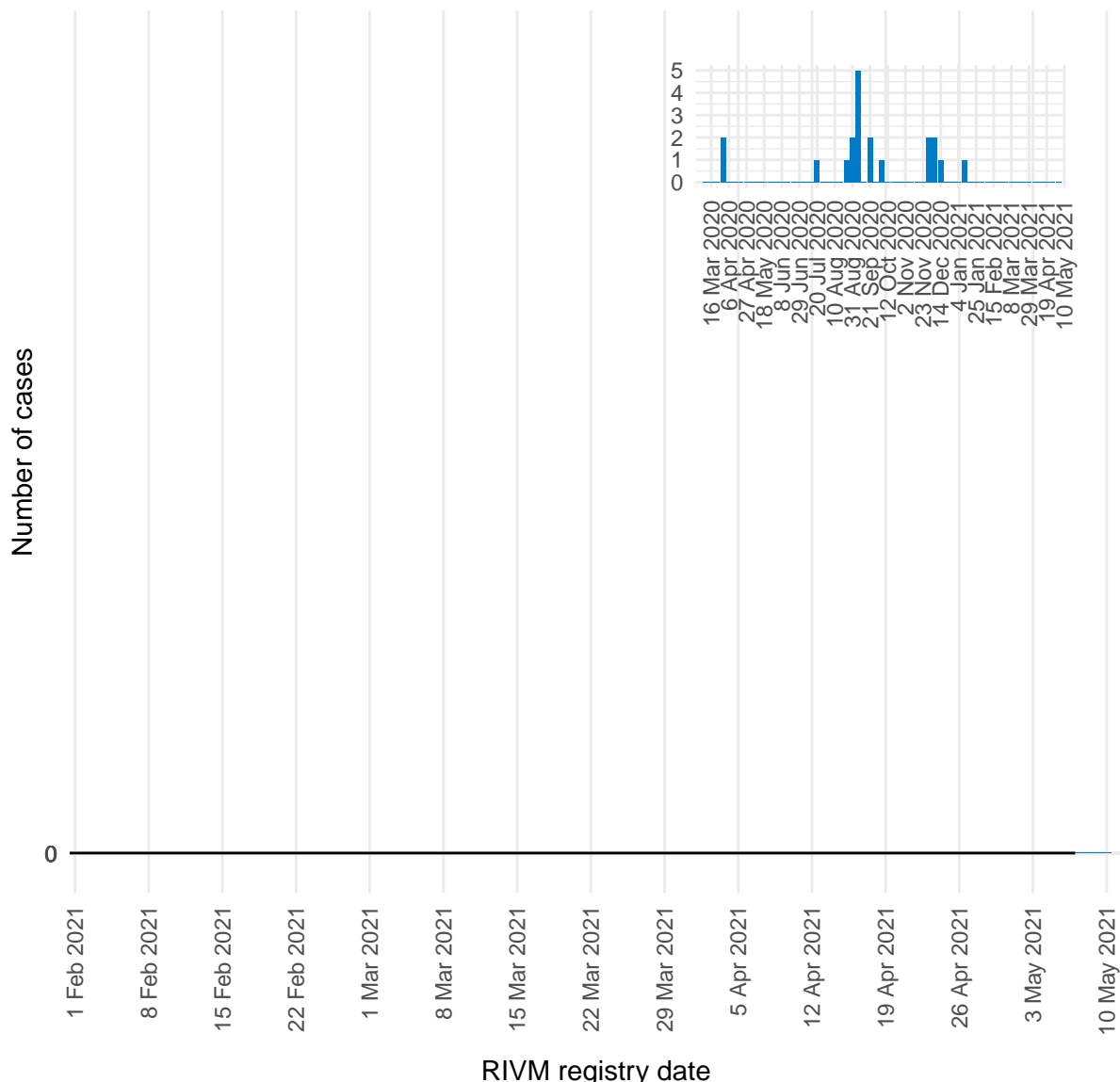


Figure 6: Number of daily reported SARS-CoV-2 cases on St Eustatius, presented by RIVM registry date^{1,2}.

¹ This figure displays the daily number of new SARS-CoV-2 by date of reporting to the RIVM. The black line represents the 7-day moving average of new infections. The vertical axes of figures 1-6 differ due to dissimilarities in the quantity of cases between the islands.

² The reported data has been presented by the date of reporting to the RIVM. These numbers can lag behind when the most recent data has not yet been reported to the RIVM.

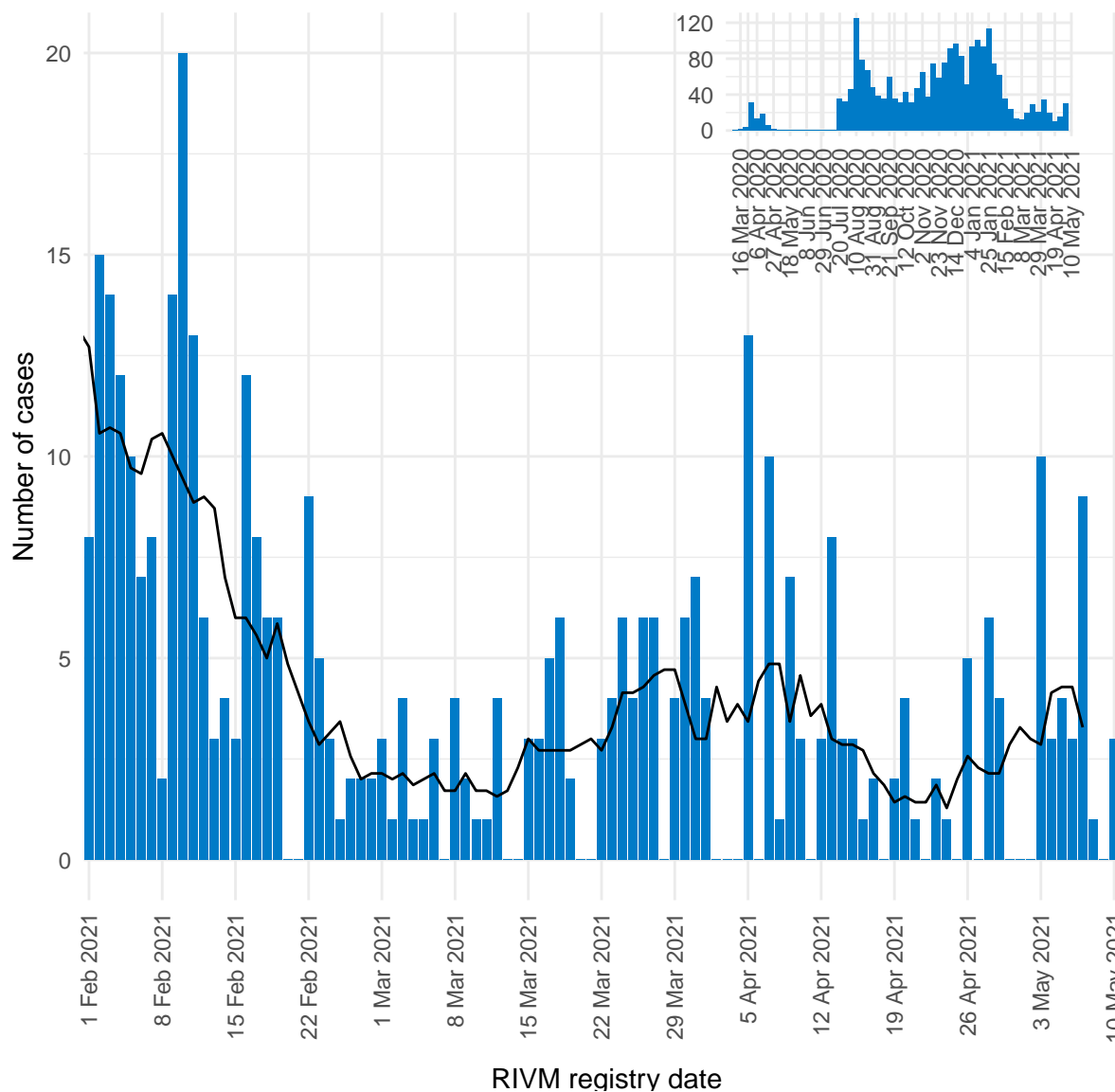


Figure 7: Number of daily reported SARS-CoV-2 cases on Dutch St Maarten, presented by RIVM registry date^{1,2}.

¹ This figure displays the daily number of new SARS-CoV-2 by date of reporting to the RIVM. The black line represents the 7-day moving average of new infections. The vertical axes of figures 1-6 differ due to dissimilarities in the quantity of cases between the islands.

² The reported data has been presented by the date of reporting to the RIVM. These numbers can lag behind when the most recent data has not yet been reported to the RIVM.

3 SARS-CoV-2 three week average incidence rate, progression over time

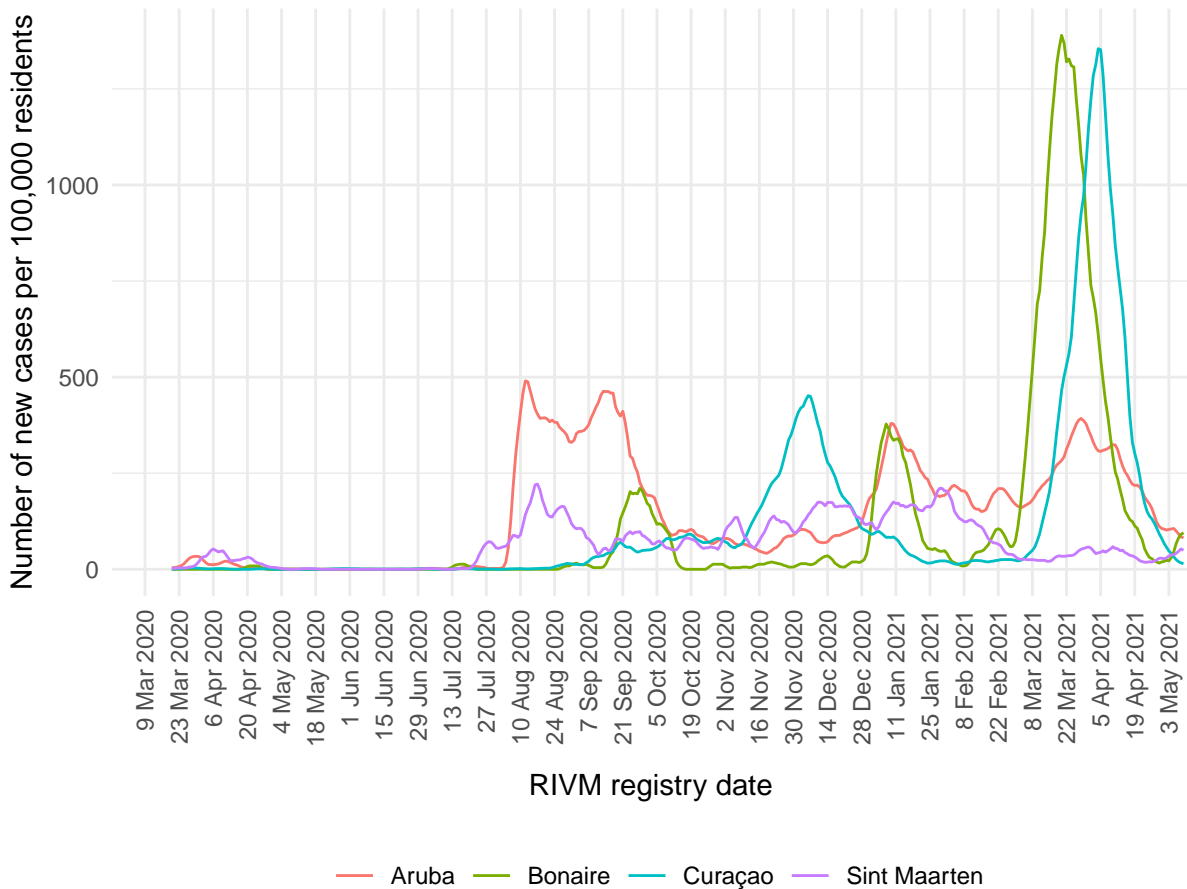


Figure 8: Three week average number of reported cases per 100,000 residents by RIVM registry date, on Curaçao, Aruba, Dutch St Maarten, and Bonaire^{1,2}.

¹ This figure displays the 3-week average incidence rate per island per 100,000 residents, including the population of undocumented migrants on each island. Each line on the vertical axis indicates a weekly average of the incidence rate (defined as the number of new cases per 100,000 persons per week, over the total population) over a period of three weeks. For example: the reported value on January 4th 2021, is the weekly average of the incidence rate between December 28th, 2020 and January 11th, 2021.

² Due to the small number of reported cases on Saba and St Eustatius, these islands have not been included in this figure.