



## Epidemiological report of SARS-CoV-2 on the Dutch Caribbean CAS- and BES-islands:

### Week 32 (August 5th - August 11th, 2021)

Produced by the National Institute for Public Health and the Environment of the Netherlands - RIVM  
*12 August 2021, 19:00 pm AST*

For general information on surveillance of COVID-19 on the CAS-BES-islands, see the next page.

### Summary

The number of SARS-CoV-2 infections and hospitalizations is greatly increasing on the islands. In the week of August 5th until August 11th, 2021, 1,552 people on the Caribbean islands received a positive SARS-CoV-2 test result, the majority of whom were in Curaçao, Aruba, and Dutch Sint Maarten.

On Aruba, 631 people per 100,000 inhabitants received a positive SARS-CoV-2 test result last week, a sharp increase compared to the previous week (434/100,000 on August 5th, 2021). Several of these cases could be linked to social settings such as local bars and restaurants. As a result of travel policies for outbound travelers, more people are being tested on the island. Policies for inbound travelers have also become more strict. All travelers from a high risk country are now required to present a negative test result regardless of vaccination status. Genomic sequencing has shown that the Delta variant represents the largest proportion in the samples (97% in week 29). The number of COVID-19 related hospitalizations has doubled in one week time. Currently there are 40 hospitalizations, 5 of whom are in the ICU. None of the patients admitted to the ICU had been previously vaccinated. On August 5th, there were 21 persons admitted to the hospital. The majority of recent hospitalized persons are not (fully) vaccinated (82% on August 9th, 2021). In the past week, 2 people have passed away with or due to COVID-19. They were unvaccinated locals between the ages of 50 and 60 years old.

On Bonaire, 86 persons per 100,000 inhabitants received a positive SARS-CoV-2 test result last week, double as many as compared to the previous week (252/100,000 on August 5th). The percentage of positive tests (0.9% positive) has remained stable over the past week (1.0% positive). One new cluster has been reported in the worksetting. The Delta variant has also become dominant on Bonaire, having been detected in 100% of the samples in week 30. However, this is based on a relatively low number of samples (n=5).

In Curaçao, 303 people per 100,000 inhabitants received a positive SARS-CoV-2 test result last week, an increase compared to a week earlier (252/100,000 on August 5th, 2021). The Delta variant continues to dominate in week 30 (100% of the 21 analyzed samples). There are currently 34 hospitalizations, 14 of whom are in the ICU. The number of hospitalizations continues to increase: On August 5th there were 23 hospitalizations with or due to COVID-19. Only 2 of the 51 people hospitalized between July 22nd and August 9th were fully vaccinated. Additionally, there is a visible increase in hospitalizations among the 40-64, and 65+ age groups. In light of the increasing hospitalizations, the local hospital has scaled down elective care and prioritized COVID-19-care. Approximately 40% of the new cases can be traced back to events and social gatherings such as (beach)clubs or family gatherings. New measures have been implemented: there is a maximum of 500 guests allowed at events and indoor dance clubs are closed. There is also more emphasis on controlling negative test results before allowing entry to events.

On Dutch Sint Maarten, there is an alarming increase in the amount of new SARS-CoV-2 infections. 385 people per 100,000 inhabitants received a positive SARS-CoV-2 test result last week, an increase compared to a week earlier (210/100,000 on August 5th, 2021). There are currently 18 COVID-related hospital admissions, 6 of which are in the ICU. A few of the hospitalized cases were reported to have been admitted for other medical reasons and became infected as a result of the (small) outbreak in the hospital. Dutch St Maarten has reported their first hospitalization of a minor, the case was reported to have sickle cell anemia. Genomic sequencing shows that the Delta variant is dominant in week 30 (100% of the 44 analyzed samples). On the French side of the island, the is high (323/100,000 inhabitants in week 30), and has nearly doubled since last week (178/100,000 inhabitants in week 29). The French side has also reported an increase in the number of hospital admissions, as to which a mandatory curfew has been set in place on this side of the island. The Dutch side has implemented a closing time of 23.00 pm for local businesses to mitigate further transmission of the virus.

---

On Saba there have been no additional SARS-CoV-2 infections reported since August 3rd, 2021.

Sint Eustatius has reported 3 additional SARS-CoV-2 infections within one week. The first case was a fully vaccinated Dutch journalist who traveled to Sint Eustatius with a negative PCR test. This case later tested positive and developed mild symptoms. The case is currently hospitalized in Sint Maarten with severe COVID-19. His travel companion was also fully vaccinated with the BionTech/Pfizer vaccine and tested positive shortly after developing mild symptoms. Close contacts of the cases remain in isolation. The third case is of an unvaccinated local who tested positive after returning from medical travel to Sint Maarten. This person is currently placed in isolation.

---

## Information on surveillance of COVID-19 on the CAS- and BES-islands

The Caribbean part of the Kingdom of the Netherlands entails the countries Curaçao, Aruba, and Dutch St Maarten (CAS-islands), as well as the overseas municipalities Bonaire, St Eustatius, and Saba (BES-islands). Surveillance data of SARS-CoV-2 cases is collected on each island in collaboration with local medical professionals, laboratories, and public health departments. These surveillance data are shared by the CAS- and BES-islands through daily updates and stored in the SARS-CoV-2 IHR Daily Overview Dutch Caribbean; an overview of the spread of SARS-CoV-2 on the CAS- and BES-islands.

This report has been generated using surveillance data registered at the RIVM between March 22nd 2020 and 11 August 2021. Sometimes surveillance data is reported to the RIVM one or multiple days later than documented on the islands. The data presented in this report are based on the date of registration at the RIVM. Because islands retrospectively correct surveillance data, the crude estimates in this report may differ slightly from the data shared by each island. The data reported here may lag behind in case more recent data has not yet been reported to the RIVM by respective islands.

Everyone with symptoms of COVID-19 can get tested. However, it is plausible that not all individuals with a SARS-CoV-2 infection are tested. The actual numbers of cases can therefore be higher than the numbers reported here. The CAS- and BES-islands also register when individuals with a positive SARS-CoV-2 test result have recovered. These data are used to report the current number of active cases in Table 3. The number of active cases refers to the number of individuals who tested positive for SARS-CoV-2 and who have not yet recovered at the time of producing this report.

### Disclaimer

Though this weekly report has been produced with the utmost care, it could possibly contain errors. Feedback on this overview is welcome.

Contact details:

RIVM COVID-19 Surveillance team (e-mail: CASBES-epi@rivm.nl)

## Table of contents

	Page
1 Overview of reported SARS-CoV-2 cases on the CAS- and BES-islands	5
2 SARS-CoV-2 progression over time	10
3 SARS-CoV-2 three week average incidence rate, progression over time	16
4 Number of COVID-19 vaccine doses administered on the CAS-BES islands	17
5 Vaccination coverage on the CAS-BES islands	19

# 1 Overview of reported SARS-CoV-2 cases on the CAS- and BES-islands

Table 1: Number of laboratory confirmed cases with a positive test result for SARS-CoV-2 over the past 2 weeks, as reported to the RIVM by the CAS- and BES-islands

Island	Date: from-until	Number of performed tests	Number of laboratory confirmed tests with positive test result	Positivity rate %
Aruba <sup>1</sup>	26-07-2021 - 01-08-2021	11155	440	3.9
	02-08-2021 - 08-08-2021	197188	690	0.3
Bonaire	26-07-2021 - 01-08-2021	1718	17	1
	02-08-2021 - 08-08-2021	2028	15	0.7
Curaçao <sup>2</sup>	26-07-2021 - 01-08-2021	11362	417	3.7
	02-08-2021 - 08-08-2021	13837	453	3.3
Saba <sup>3</sup>	26-07-2021 - 01-08-2021	-	0	-
	02-08-2021 - 08-08-2021	1345	1	0.1
Sint Eustatius	26-07-2021 - 01-08-2021	0	0	-
	02-08-2021 - 08-08-2021	511	2	0.4
Sint Maarten <sup>4</sup>	26-07-2021 - 01-08-2021	-	-	-
	02-08-2021 - 08-08-2021	2870	180	6.3

<sup>1</sup> This estimate concerns a crude positivity rate for Aruba. The Directie Volksgezondheid Aruba reports a corrected positivity rate through: <https://www.facebook.com/desparuba>.

<sup>2</sup> The Public Health Department on Curaçao estimates a corrected positivity rate. Therefore, estimates presented here may differ from positivity rates reported by Curaçao.

<sup>3</sup> A '-' value indicates insufficient data was reported to the RIVM to report in this table.

<sup>4</sup> The positivity rate for Dutch St Maarten has been estimated using data of the PCR tests analyzed only. Therefore, estimates presented here may differ from positivity rates reported by Dutch St Maarten (SLS), as those include data of rapid antigen tests as well.

Table 2: Number of laboratory confirmed cases with a positive SARS-CoV-2 test result, number of hospital admissions<sup>1</sup> and number of deceased cases, cumulative and for the previous week, on the CAS- and BES-islands, as reported to RIVM

Island	Cumulative			Previous week <sup>2</sup>	
	Number of cases	Hospital admissions	Deceased	Number of cases	Deceased
Aruba	12791	666	113	791	2
Bonaire	1706	66	17	20	0
Curaçao	14333	584	132	498	2
Saba	8	1	0	0	0
Sint Eustatius	23	0	0	3	0
Sint Maarten	3088	178	38	240	4
Totaal	31949	1495	300	1552	8

<sup>1</sup> The number of hospital admissions cannot be displayed for the previous week due to a delay in reporting these data. The current number of persons hospitalized due to or with COVID-19 is reported in Table 3.

<sup>2</sup> These have been reported to the RIVM between August 5th and August 11th, 2021.

Table 3: Current number of active SARS-CoV-2 cases and status of COVID-19 hospital occupancy on the CAS- and BES-islands, as reported to RIVM<sup>1,2</sup>

Island	Number of active cases	Number of persons with COVID-19 on general hospital ward	Number of persons with COVID-19 hospitalized in the ICU
Aruba	986	30	5
Bonaire	15	0	0
Curaçao	633	6	14
Saba	0	0	0
Sint Eustatius	3	0	0
Sint Maarten	282	6	6
Totaal	1919	42	25

<sup>1</sup> These have been reported to the RIVM between August 5th and August 11th, 2021.

<sup>2</sup> The number of active cases is defined as the number of COVID-19 infected persons who have not been confirmed to have recovered from COVID-19 infection at the time of reporting these data to RIVM. These data may lag behind when islands have limited public health capacity to confirm recovery among infected cases.

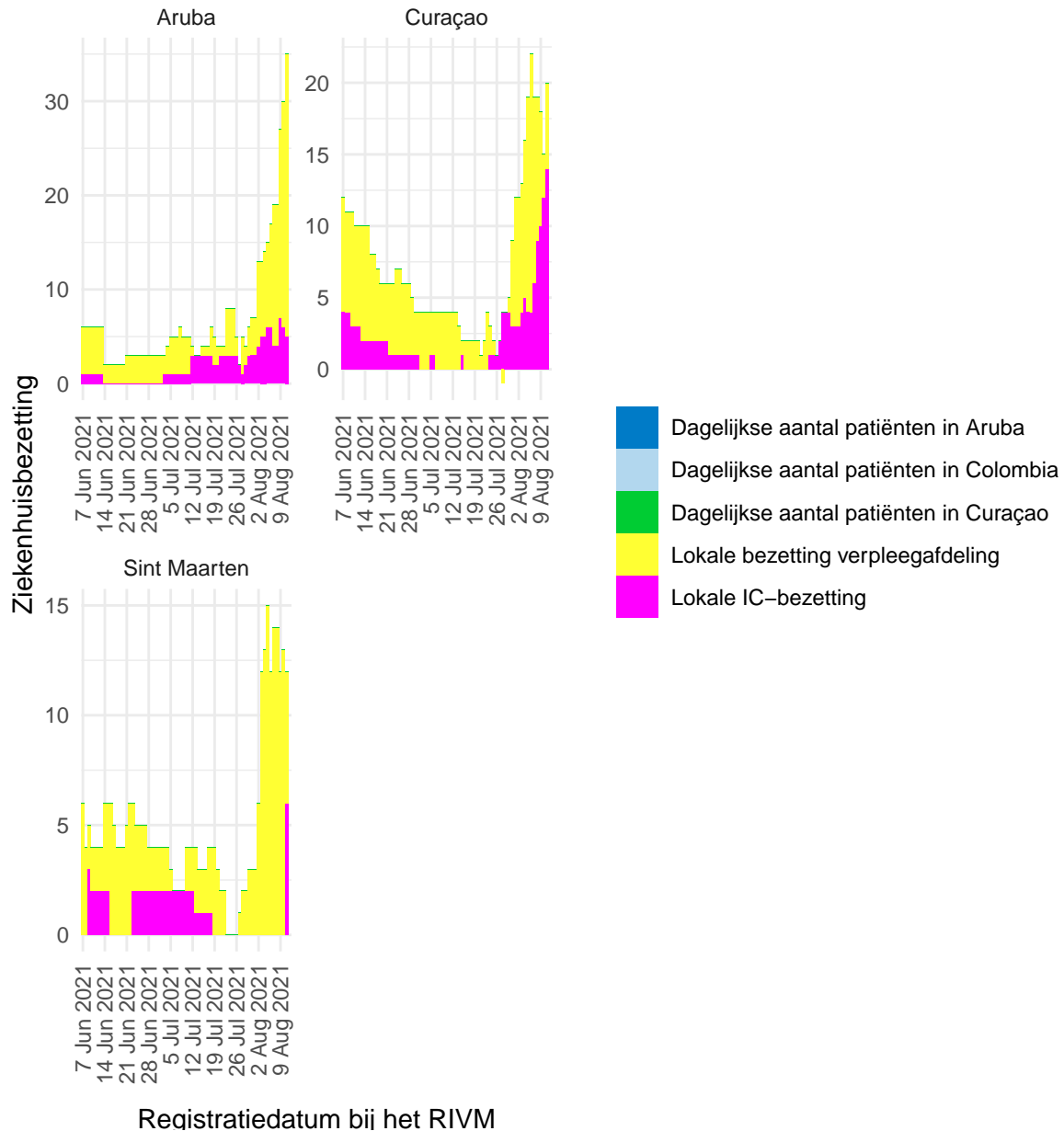


Figure 1: Progression of COVID-related hospital occupation over time <sup>1,2,3,4,5</sup>

<sup>1</sup> This figure presents the number of reported persons who have tested positive for SARS-CoV-2 during or before admission on the general hospital ward and/or ICU.

<sup>2</sup> The light blue data represent the ICU-occupation over time, per island. The dark blue data represent the occupation of the general hospital ward over time, per island.

<sup>3</sup> Due to the low number of hospitalised patients on Saba en St Eustatius, these islands have not been included in this graph.

<sup>4</sup> Based on the most recent data registered for Bonaire, the admission status is unknown for 234 persons who have tested positive for SARS-CoV-2 since January 1st, 2021. These cases have not been included in this graph.

<sup>5</sup> The reported data has been presented by the date of reporting to the RIVM. These numbers can lag behind when the most recent data has not yet been reported to the RIVM.

Table 4: SARS-CoV-2 incidence rate per 100,000 residents on the CAS- and BES-islands<sup>1</sup>, as reported to RIVM

Island	Incidence per 100,000 residents	
	Previous week <sup>2</sup>	Previous two weeks <sup>3</sup>
Aruba	529	963
Bonaire	82	121
Curaçao	259	511
Saba	0	52
Sint Eustatius	95	95
Sint Maarten	316	526

<sup>1</sup> The calculated incidence rates include the estimated number of undocumented migrants on each island, see Table 5.

<sup>2</sup> The incidence rate per 100,000 persons, for the previous week, has been calculated from 5 augustus 2021 until 11 augustus 2021.

<sup>3</sup> The incidence rate per 100,000 residents, for the previous two weeks, has been calculated from 29 juli 2021 until 11 augustus 2021.

Table 5: Number of residents and acreage of the CAS- and BES-islands<sup>1</sup>

Island	Capital city	Residents	Acreage	Political status
Aruba	Oranjestad	125.282	180 km <sup>2</sup>	Country within the Kingdom of The Netherlands
Bonaire	Kralendijk	23.173	288 km <sup>2</sup>	Dutch municipality
Curaçao	Willemstad	164.223	444 km <sup>2</sup>	Country within the Kingdom of The Netherlands
Saba	The Bottom	1.918	13 km <sup>2</sup>	Dutch municipality
Sint Maarten	Philipsburg	62.323	34 km <sup>2</sup>	Country within the Kingdom of The Netherlands
Sint Eustatius	Oranjestad	3.142	21 km <sup>2</sup>	Dutch municipality

<sup>1</sup> These numbers refer to the 2021 population sizes. Each island counts a substantial population of undocumented migrants. The reported incidence rates include the estimated population of undocumented migrants. On Aruba, Curaçao, and Dutch St Maarten the population size is estimated to be between 8,000 and 20,000 migrants in 2021. On Bonaire the population size is estimated around 1,400 migrants. These data are relevant to include as these populations are difficult to reach for local public health services and often have less access to curative care.

## 2 SARS-CoV-2 progression over time

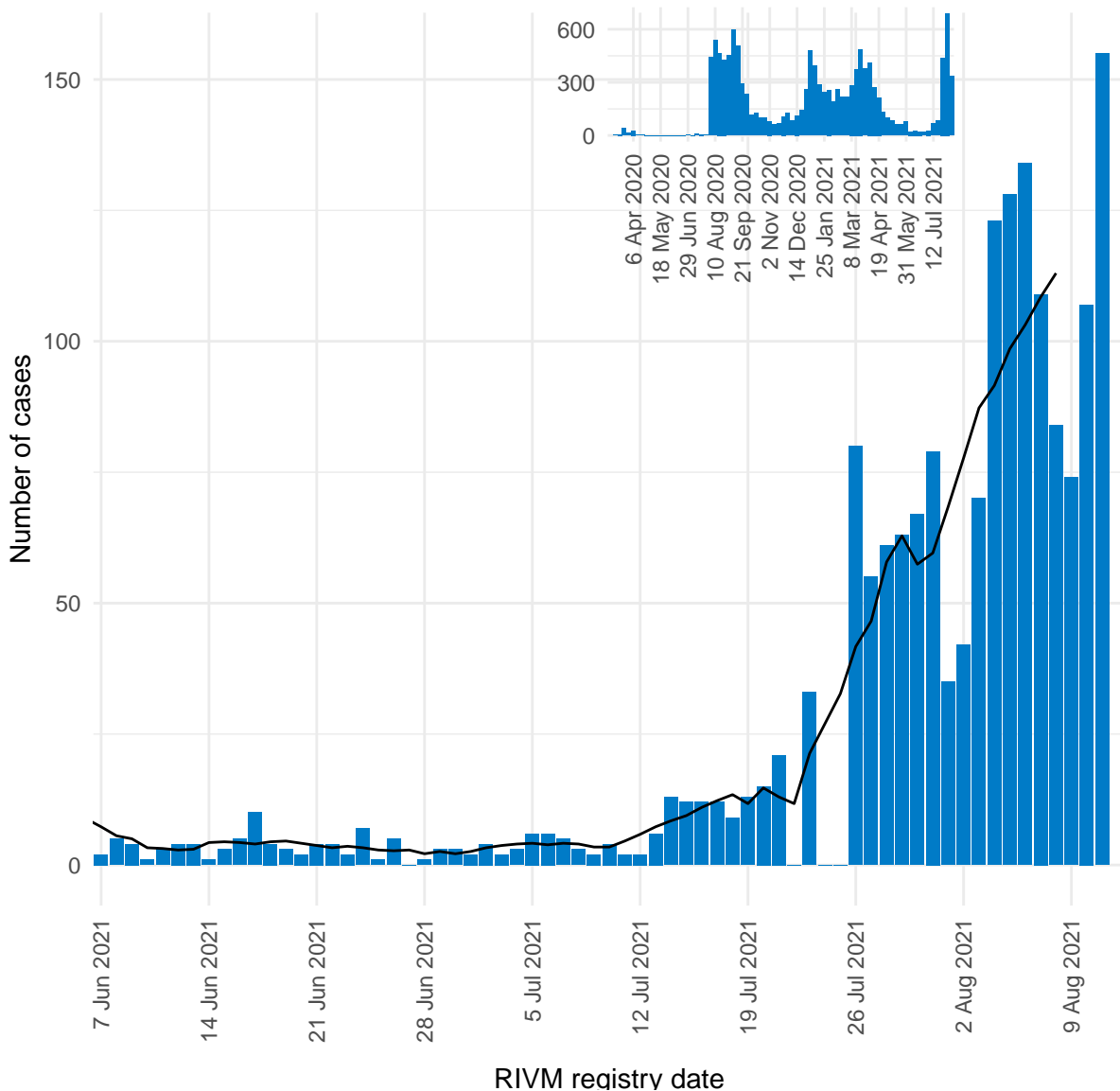


Figure 2: Number of daily reported SARS-CoV-2 cases on Aruba, presented by RIVM registry date<sup>1,2</sup>.

<sup>1</sup> This figure displays the daily number of new SARS-CoV-2 by date of reporting to the RIVM. The black line represents the 7-day moving average of new infections. The vertical axes of figures 1-6 differ due to dissimilarities in the quantity of cases between the islands.

<sup>2</sup> The reported data has been presented by the date of reporting to the RIVM. These numbers can lag behind when the most recent data has not yet been reported to the RIVM.

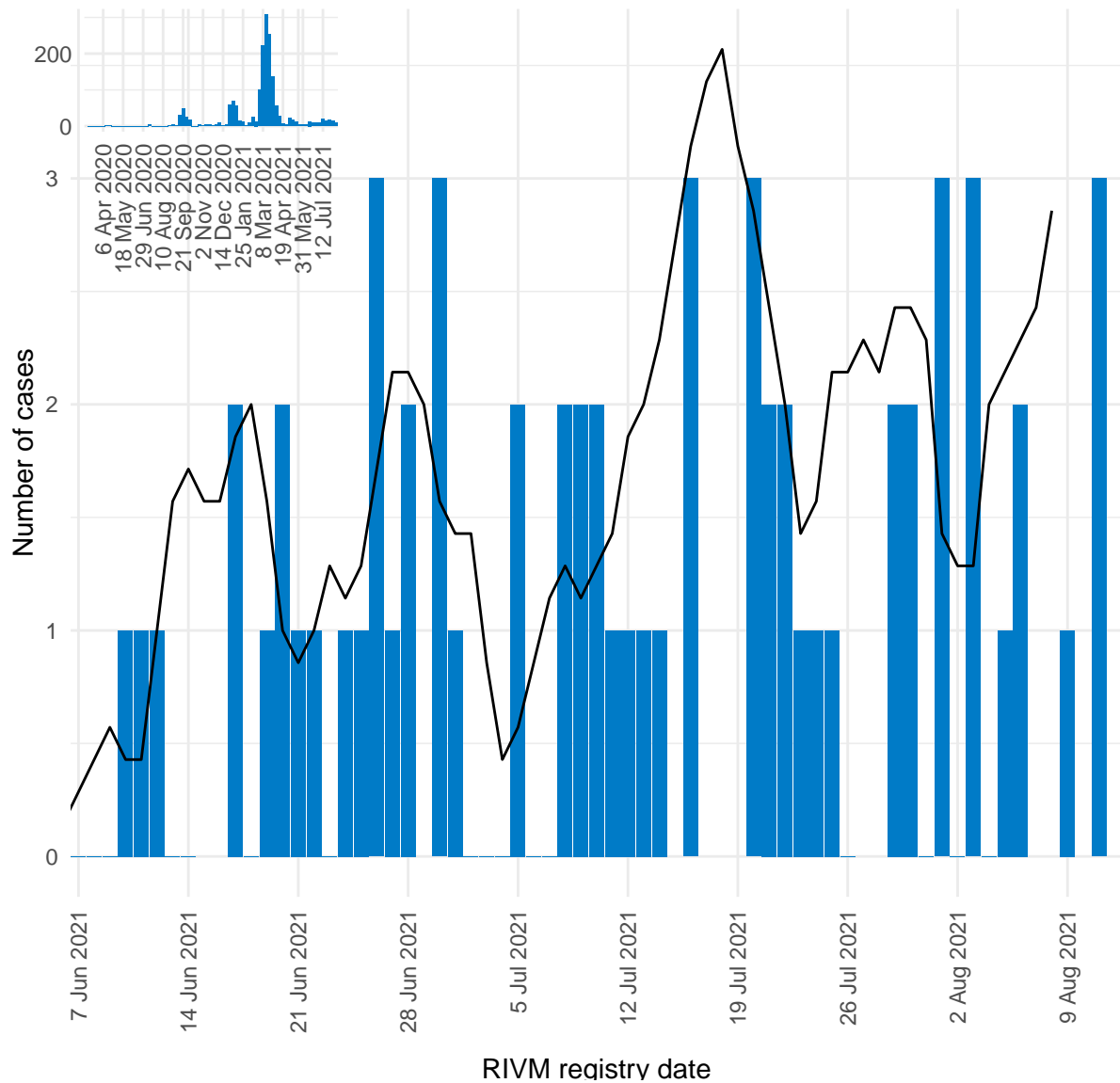


Figure 3: Number of daily reported SARS-CoV-2 cases on Bonaire, presented by RIVM registry date<sup>1,2</sup>.

<sup>1</sup> This figure displays the daily number of new SARS-CoV-2 by date of reporting to the RIVM. The black line represents the 7-day moving average of new infections. The vertical axes of figures 1-6 differ due to dissimilarities in the quantity of cases between the islands.

<sup>2</sup> The reported data has been presented by the date of reporting to the RIVM. These numbers can lag behind when the most recent data has not yet been reported to the RIVM.

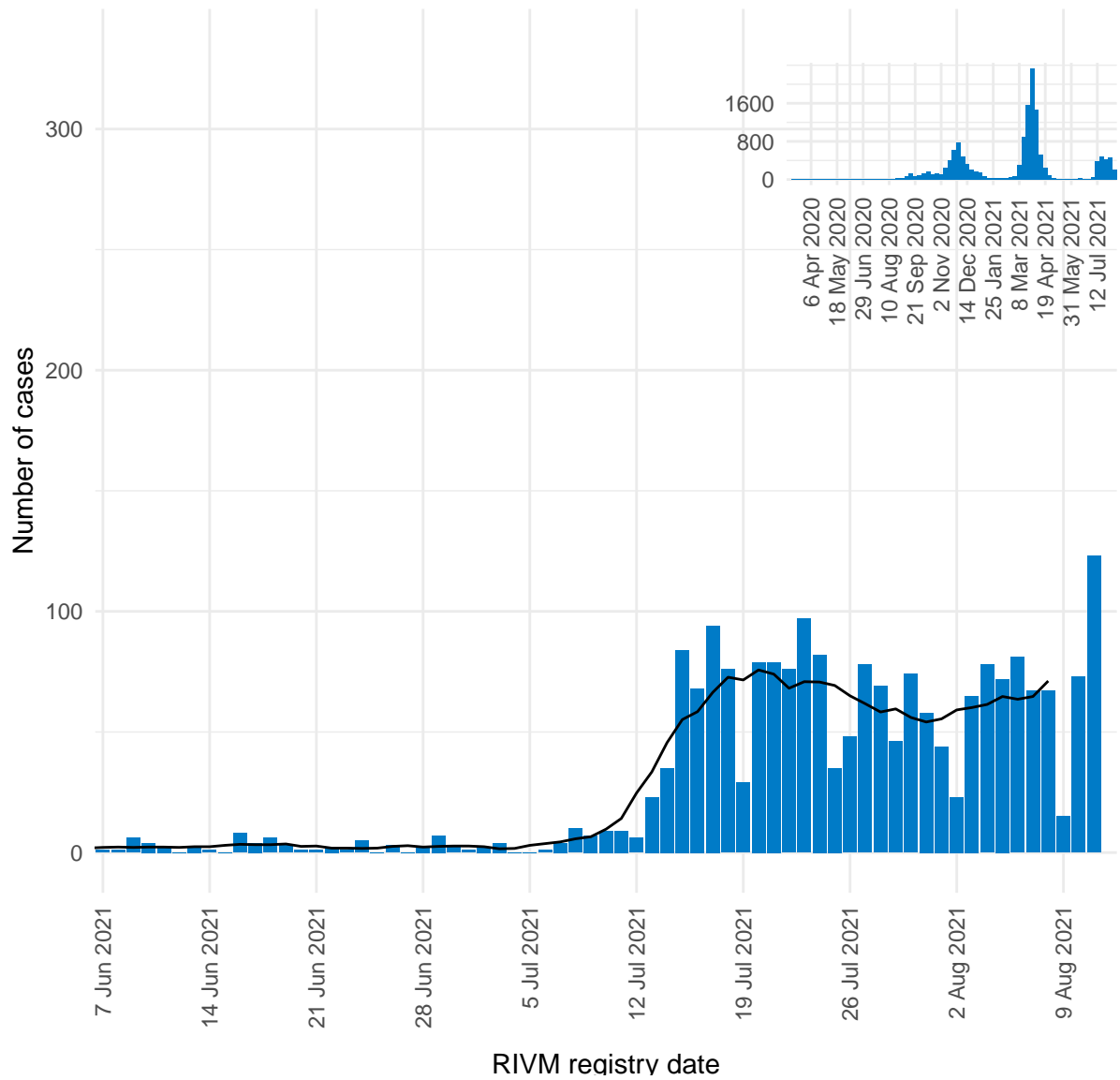


Figure 4: Number of daily reported SARS-CoV-2 cases on Curaçao, presented by RIVM registry date<sup>1,2</sup>.

<sup>1</sup> This figure displays the daily number of new SARS-CoV-2 by date of reporting to the RIVM. The black line represents the 7-day moving average of new infections. The vertical axes of figures 1-6 differ due to dissimilarities in the quantity of cases between the islands.

<sup>2</sup> The reported data has been presented by the date of reporting to the RIVM. These numbers can lag behind when the most recent data has not yet been reported to the RIVM.

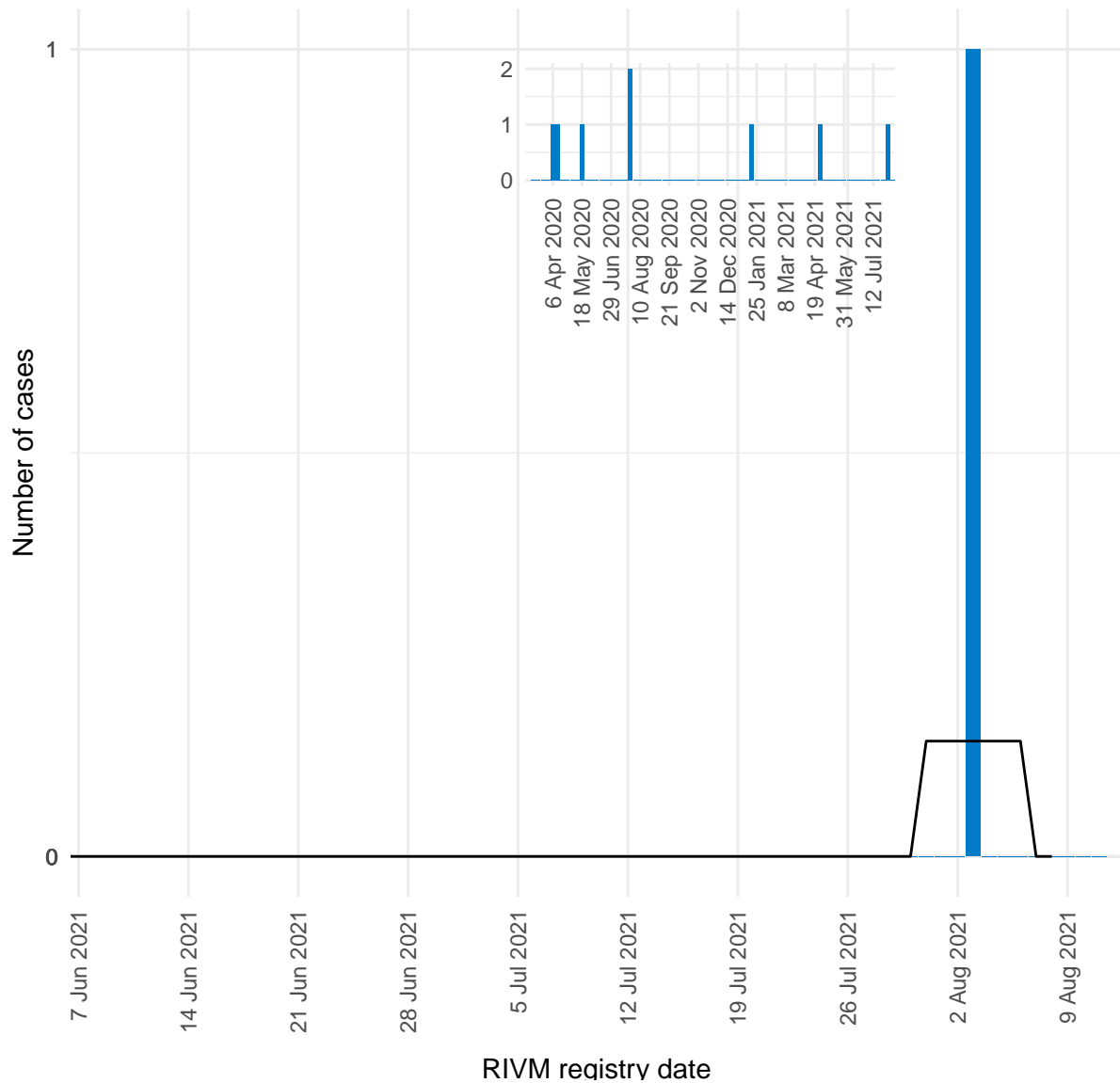


Figure 5: Number of daily reported SARS-CoV-2 cases on Saba, presented by RIVM registry date<sup>1,2</sup>.

<sup>1</sup> This figure displays the daily number of new SARS-CoV-2 by date of reporting to the RIVM. The black line represents the 7-day moving average of new infections. The vertical axes of figures 1-6 differ due to dissimilarities in the quantity of cases between the islands.

<sup>2</sup> The reported data has been presented by the date of reporting to the RIVM. These numbers can lag behind when the most recent data has not yet been reported to the RIVM.

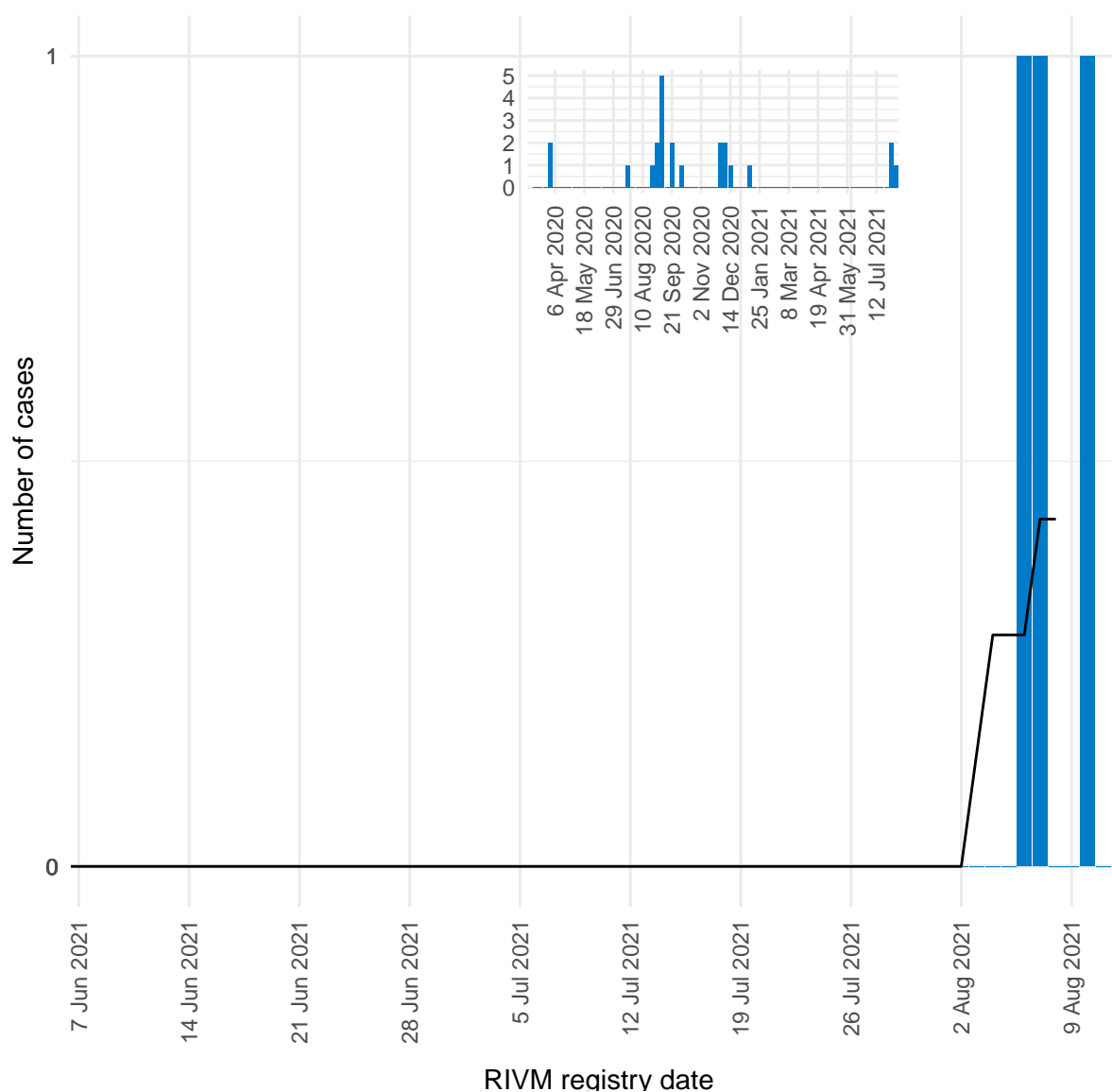


Figure 6: Number of daily reported SARS-CoV-2 cases on St Eustatius, presented by RIVM registry date<sup>1,2</sup>.

<sup>1</sup> This figure displays the daily number of new SARS-CoV-2 by date of reporting to the RIVM. The black line represents the 7-day moving average of new infections. The vertical axes of figures 1-6 differ due to dissimilarities in the quantity of cases between the islands.

<sup>2</sup> The reported data has been presented by the date of reporting to the RIVM. These numbers can lag behind when the most recent data has not yet been reported to the RIVM.

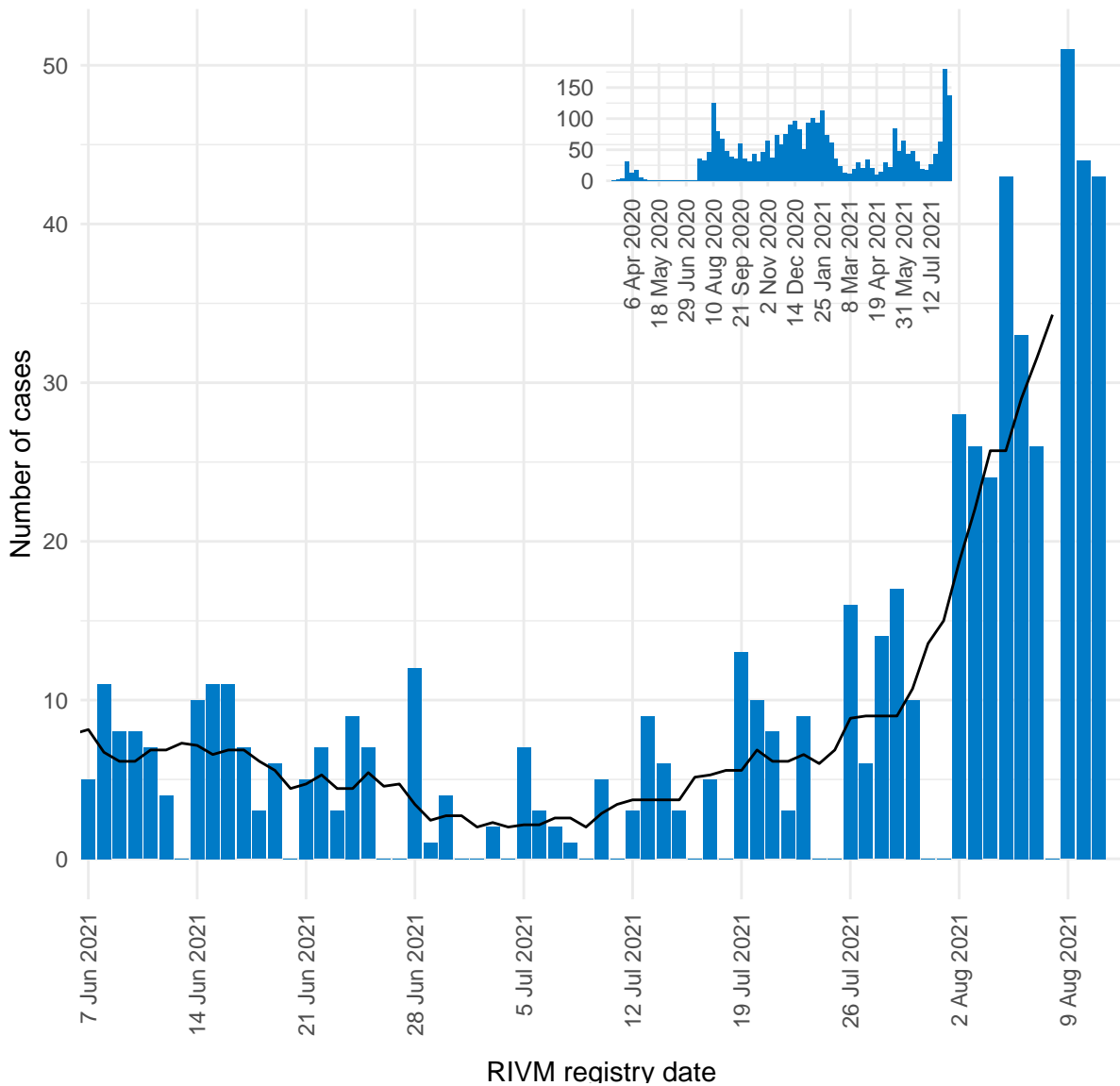


Figure 7: Number of daily reported SARS-CoV-2 cases on Dutch St Maarten, presented by RIVM registry date<sup>1,2</sup>.

<sup>1</sup> This figure displays the daily number of new SARS-CoV-2 by date of reporting to the RIVM. The black line represents the 7-day moving average of new infections. The vertical axes of figures 1-6 differ due to dissimilarities in the quantity of cases between the islands.

<sup>2</sup> The reported data has been presented by the date of reporting to the RIVM. These numbers can lag behind when the most recent data has not yet been reported to the RIVM.

### 3 SARS-CoV-2 three week average incidence rate, progression over time

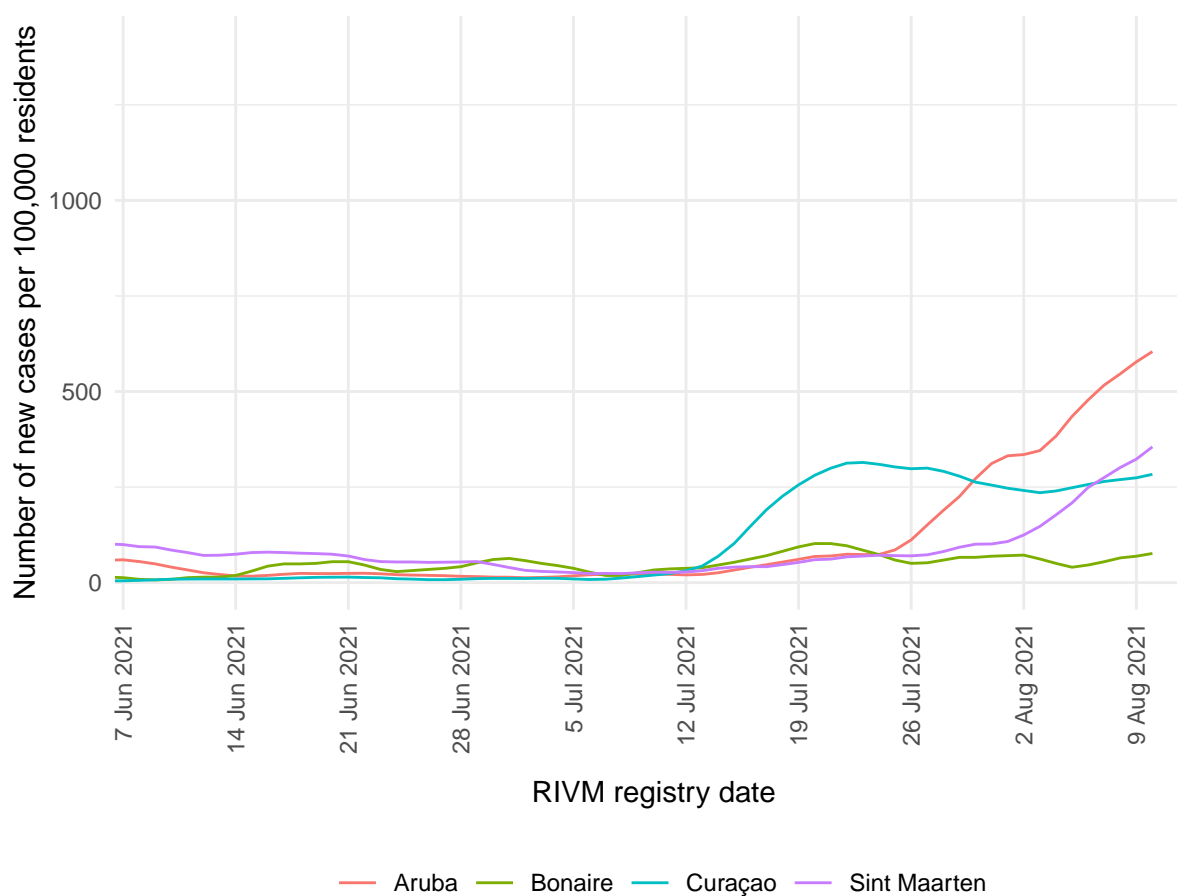


Figure 8: Three week average number of reported cases per 100,000 residents by RIVM registry date, on Curaçao, Aruba, Dutch St Maarten, and Bonaire<sup>1,2</sup>.

<sup>1</sup> This figure displays the 3-week average incidence rate per island per 100,000 residents, including the population of undocumented migrants on each island. Each line on the vertical axis indicates a weekly average of the incidence rate (defined as the number of new cases per 100,000 persons per week, over the total population) over a period of three weeks. For example: the reported value on January 4th 2021, is the weekly average of the incidence rate between December 28th, 2020 and January 11th, 2021.

<sup>2</sup> Due to the small number of reported cases on Saba and St Eustatius, these islands have not been included in this figure.

## 4 Number of COVID-19 vaccine doses administered on the CAS-BES islands

Table 6: Number of first and second doses of COVID-19 vaccine administered until 9 augustus 2021<sup>1</sup>.

	Aruba	Bonaire	Curaçao	Saba	Sint Eu- statius	Sint Maarten <sup>2</sup>
Number of persons who have received their first dosis (aged 12+ years)	72461	15735	93312	1530	1366	24826
Number of persons who have received their first and second dosis (aged 12+ years)	66652	13343	83456	1439	1276	22004
Number of fully vaccinated persons (aged 12+ years) <sup>3</sup>	67186	13343	84493	1439	1276	22004
Number of high risk persons (aged 18-59 years) who have received their first dosis <sup>4,5</sup>	3918	-	9020	-	-	4462
Number of fully vaccinated high risk persons (aged 18-59 years) <sup>5</sup>	3739	-	8287	-	-	2820

<sup>1</sup> The vaccination coverage data presented here is reported by the islands to VWS on a weekly basis. These data may lag behind from the vaccination coverage data presented by the island officials.

<sup>2</sup> These data refer to the numbers of vaccinated persons on the Dutch side of St Maarten. Vaccination coverage on the French side of St Martin is reported by Santé Publique France on a weekly basis.

<sup>3</sup> The number of fully vaccinated persons is defined as the number of completed vaccinations. This also includes persons who only require one dose of vaccine to be considered as fully vaccinated, due to having a history of SARS-CoV-2 infection. Both Aruba and Curaçao are reporting these data separately from the number of persons who have received two doses of vaccine. Dutch St Maarten and the BES-islands are currently not reporting these data. The number of completed vaccinations on those islands may therefore be an underestimation.

<sup>4</sup> For the BES islands, no information was collected about high- and low-risk groups, because all residents within this age group could register for a vaccination at the same time.

<sup>5</sup> Vaccination data for persons aged 60+ cannot be displayed here because these data are not reported to RIVM.

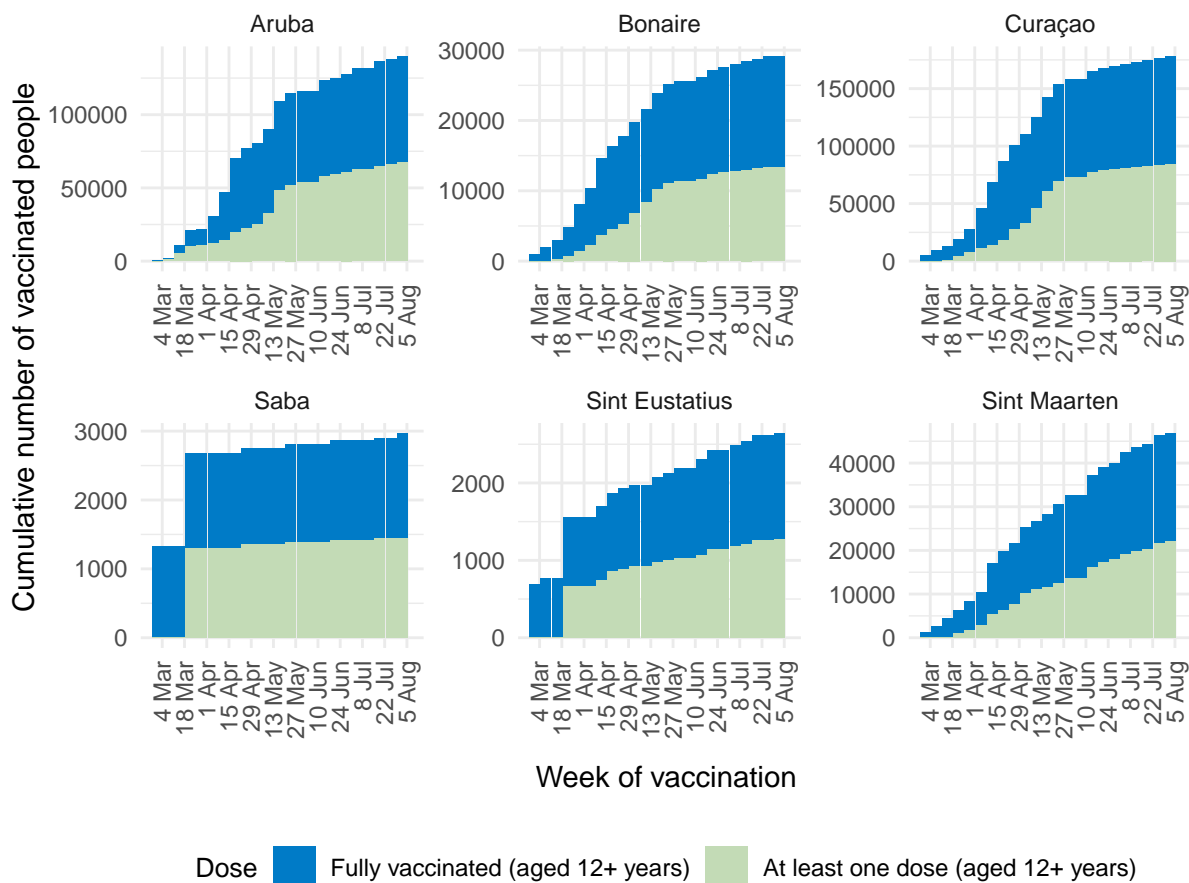


Figure 9: Number of first and second doses of COVID-19 vaccine administered, cumulative by vaccination date, until 9 augustus 2021<sup>1,2,3</sup>.

<sup>1</sup> The vaccination coverage data presented here is reported by the islands to VWS on a weekly basis. These data may lag behind from the vaccination coverage data presented by the island officials.

<sup>2</sup> These data refer to the numbers of vaccinated persons on the Dutch side of St Maarten. Vaccination coverage on the French side of St Martin is reported by Santé Publique France on a weekly basis.

<sup>3</sup> The number of fully vaccinated persons is defined as the number of completed vaccinations. This also includes persons who only require one dose of vaccine to be considered as fully vaccinated, due to having a history of SARS-CoV-2 infection. Both Aruba and Curaçao are reporting these data separately from the number of persons who have received two doses of vaccine. Dutch St Maarten and the BES-islands are currently not reporting these data. The number of completed vaccinations on those islands may therefore be an underestimation.

## 5 Vaccination coverage on the CAS-BES islands

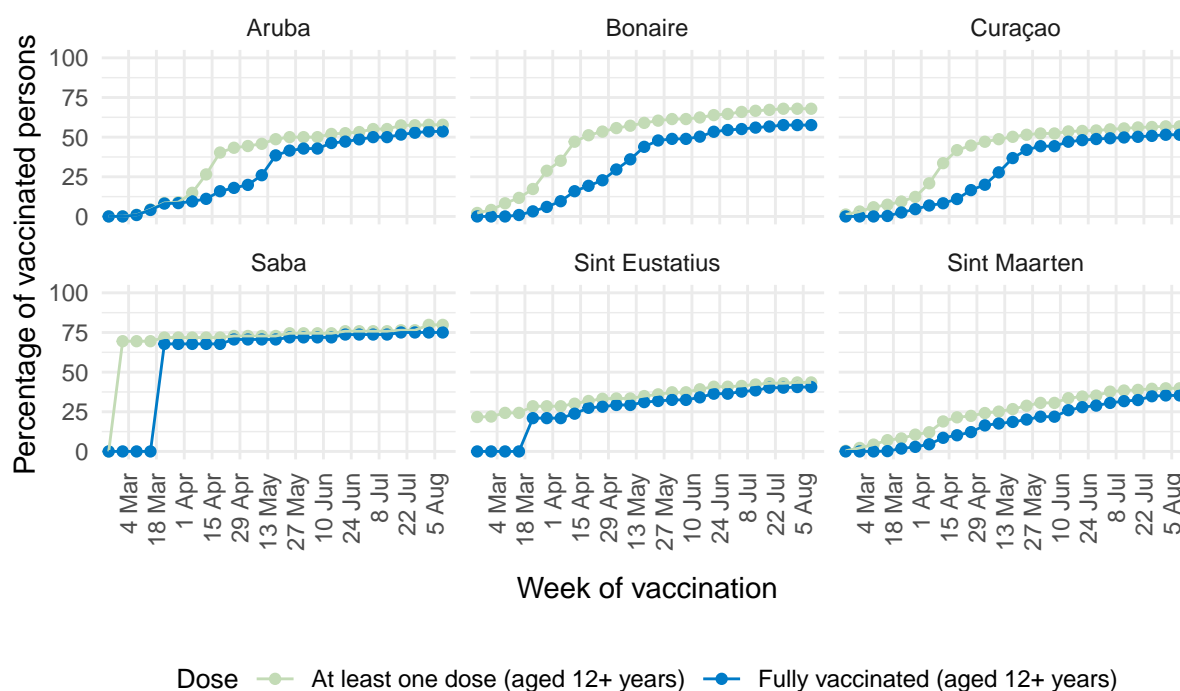


Figure 10: Percentage of residents aged 12 years or older who have received at least one vaccination dose and the percentage of residents aged 12 or older who have been fully vaccinated according to the current vaccination schedule of the vaccines used<sup>1-4</sup>.

<sup>1</sup> The vaccination coverage data presented here is reported by the islands to VWS on a weekly basis. These data may lag behind from the vaccination coverage data presented by the island officials.

<sup>2</sup> These data refer to the numbers of vaccinated persons on the Dutch side of St Maarten. Vaccination coverage on the French side of St Martin is reported by Santé Publique France on a weekly basis.

<sup>3</sup> The vaccination coverage is defined as: Persons aged 12+ who have received at least one dose. A one-dose schedule is sufficient for persons who have indicated that they have demonstrably experienced COVID-19 in the past six months. They are included in the 'fully vaccinated' percentages presented in this figure. These numbers are reported separately per week 21 by Curaçao and week 22 by Aruba.

<sup>4</sup> The number of fully vaccinated persons is defined as the number of completed vaccinations. This also includes persons who only require one dose of vaccine to be considered as fully vaccinated, due to having a history of SARS-CoV-2 infection. Both Aruba and Curaçao are reporting these data separately from the number of persons who have received two doses of vaccine. Dutch St Maarten and the BES-islands are currently not reporting these data. The number of completed vaccinations on those islands may therefore be an underestimation.