



**National Institute for Public Health
and the Environment**
Ministry of Health, Welfare and Sport

Epidemiological report of SARS-CoV-2 on the Dutch Caribbean CAS- and BES-islands:

Week 01 (December 30 2021- January 5, 2022)

Produced by the National Institute for Public Health and the Environment of the Netherlands - RIVM
6 January 2022, 19:00 pm AST

For general information on surveillance of COVID-19 on the CAS-BES-islands, see the next page.

Summary

In the week of December 30, 2021- January 5, 2022 a total number of 11.260 people (including tourists) on the CAS and BES islands received a positive test result. The majority of cases last week were detected on Aruba, with 5.189 new cases.

The alarming increase in incidence has continued on all the islands over the past week. Last week Aruba reported an incidence of 4.142 people per 100.000, Bonaire 1.972 people per 100.00, Curacao 2.770 people per 100.000 and Sint Maarten 1.430 people per 100.000. Additionally, last week both Saba (3.337 people per 100.00) and Sint Eustatius (3.501 people per 100.000) reported a rapid rise in cases of SARS-CoV-2.

Information on surveillance of COVID-19 on the CAS- and BES-islands

The Caribbean part of the Kingdom of the Netherlands entails the countries Curaçao, Aruba, and Dutch St Maarten (CAS-islands), as well as the overseas municipalities Bonaire, St Eustatius, and Saba (BES-islands). Surveillance data of SARS-CoV-2 cases is collected on each island in collaboration with local medical professionals, laboratories, and public health departments. These surveillance data are shared by the CAS- and BES-islands through daily updates and stored in the SARS-CoV-2 IHR Daily Overview Dutch Caribbean; an overview of the spread of SARS-CoV-2 on the CAS- and BES-islands.

This report has been generated using surveillance data registered at the RIVM between March 22nd 2020 and 5 January 2022. Sometimes surveillance data is reported to the RIVM one or multiple days later than documented on the islands. The data presented in this report are based on the date of registration at the RIVM. Because islands retrospectively correct surveillance data, the crude estimates in this report may differ slightly from the data shared by each island. The data reported here may lag behind in case more recent data has not yet been reported to the RIVM by respective islands. It is not known from all positive cases if they were admitted to the hospital or have passed away. This is due to the mainland Netherlands, the CAS-, and the BES-islands not being obligated to report on hospital admissions and deaths from persons with a positive test result for SARS-CoV-2. The actual numbers are therefore (probably) higher than the reported numbers.

Everyone with symptoms of COVID-19 can get tested. However, it is plausible that not all individuals with a SARS-CoV-2 infection are tested. The actual numbers of cases can therefore be higher than the numbers reported here. The CAS- and BES-islands also register when individuals with a positive SARS-CoV-2 test result have recovered. These data are used to report the current number of active cases in Table 3. The number of active cases refers to the number of individuals who tested positive for SARS-CoV-2 and who have not yet recovered at the time of producing this report.

Information on monitoring of COVID-19 vaccination on the CAS and BES islands

The COVID-19 vaccination campaign on the CAS-BES islands started in February 2021. Each island has their own vaccination campaign. The actual implementation of these vaccination campaigns depends on, among other things, the approval, operation, delivery and distribution of the vaccines, and on people's willingness to vaccinate. In this document we report the estimated total number of vaccinated persons and the vaccination coverage on the CAS-BES islands. The current report is based on data on vaccinations administered up to and including 5 January 2022 using monitoring data received from the islands.

Disclaimer

Though this weekly report has been produced with the utmost care, it could possibly contain errors. Feedback on this overview is welcome.

Contact details:

RIVM COVID-19 Surveillance team (e-mail: CASBES-epi@rivm.nl)

Table of contents

	Page
1 Overview of reported SARS-CoV-2 cases on the CAS- and BES-islands	4
2 SARS-CoV-2 progression over time	8
3 SARS-CoV-2 three week average incidence rate, progression over time	14
4 Number of COVID-19 vaccine doses administered on the CAS-BES islands	15
5 Vaccination coverage on the CAS-BES islands	17

1 Overview of reported SARS-CoV-2 cases on the CAS- and BES-islands

Table 1: Number of laboratory confirmed cases with a positive test result for SARS-CoV-2 over the past 2 weeks, as reported to the RIVM by the CAS- and BES-islands

Island	Date: from-until	Number of performed tests	Number of laboratory confirmed tests with positive test result	Positivity rate %
Aruba ¹	20-12-2021 - 26-12-2021	-	-	-
	27-12-2021 - 02-01-2022	-	-	-
Bonaire	20-12-2021 - 26-12-2021	349	73	20.9
	27-12-2021 - 02-01-2022	427	200	46.8
Curaçao ²	20-12-2021 - 26-12-2021	18198	1279	7
	27-12-2021 - 02-01-2022	20191	3304	16.4
Saba ³	20-12-2021 - 26-12-2021	-	10	-
	27-12-2021 - 02-01-2022	-	27	-
Sint Eustatius	20-12-2021 - 26-12-2021	195	0	0
	27-12-2021 - 02-01-2022	460	24	5.2
Sint Maarten ⁴	20-12-2021 - 26-12-2021	3253	120	3.7
	27-12-2021 - 02-01-2022	4685	774	5.2

¹ This estimate concerns a crude positivity rate for Aruba. The Directie Volksgezondheid Aruba reports a corrected positivity rate through: <https://www.facebook.com/desparuba>.

² The Public Health Department on Curaçao estimates a corrected positivity rate. Therefore, estimates presented here may differ from positivity rates reported by Curaçao.

³ A '-' value indicates insufficient data was reported to the RIVM to report in this table.

⁴ The positivity rate for Dutch St Maarten has been estimated using data of the PCR tests analyzed only. Therefore, estimates presented here may differ from positivity rates reported by Dutch St Maarten (SLS), as those include data of rapid antigen tests as well.

Table 2: Number of laboratory confirmed cases with a positive SARS-CoV-2 test result, number of hospital admissions¹ and number of deceased cases, cumulative and for the previous week, on the CAS- and BES-islands, as reported to RIVM

Island	Cumulative			Previous week ²	
	Number of cases	Hospital admissions	Deceased	Number of cases	Deceased
Aruba	24210	1078	181	5189	0
Bonaire	3751	66	23	457	0
Curaçao	24748	761	189	4549	2
Saba	95	1	0	64	0
Sint Eustatius	142	0	0	110	0
Sint Maarten	5945	278	75	891	0
Totaal	58891	2184	468	11260	2

¹ The number of hospital admissions cannot be displayed for the previous week due to a delay in reporting these data. The current number of persons hospitalized due to or with COVID-19 is reported in Table 3.

² These have been reported to the RIVM between December 30th, 2021 and January 5th, 2022.

Table 3: Current number of active SARS-CoV-2 cases and status of COVID-19 hospital occupancy on the CAS- and BES-islands, as reported to RIVM^{1,2}

Island	Number of active cases	Number of COVID-19 patients on general ward	Number of COVID-19 patients in the ICU	Oversees occupancy in Colombia	Oversees occupancy in the USA	Number of COVID-19 patients on OBGYN ward	Number of COVID-19 patients on pediatric ward
Aruba	3730	18	3	3	0	0	0
Bonaire	477	4	0	0	0	0	0
Curaçao	5722	23	8	0	0	0	0
Saba	63	0	0	0	0	0	0
Sint Eustatius	112	0	0	0	0	0	0
Sint Maarten	992	0	7	0	0	0	0
Totaal	11096	45	18	3	0	0	0

¹ Number of active SARS-CoV-2 infections is defined as the number of persons with a SARS-CoV-2 infection of which the recovery has not been registered by the local public health department at the time of registration by the RIVM. These numbers can also be delayed if the contact tracing capacity at the public health department is limited.

² Per September 1, 2021, admissions to the OB/GYN and pediatric wards are reported separately for St Maarten. The other islands are currently not reporting these data separately.

³ Covid patients admitted to the Special Care unit on Bonaire are mentioned under the column ICU-local.

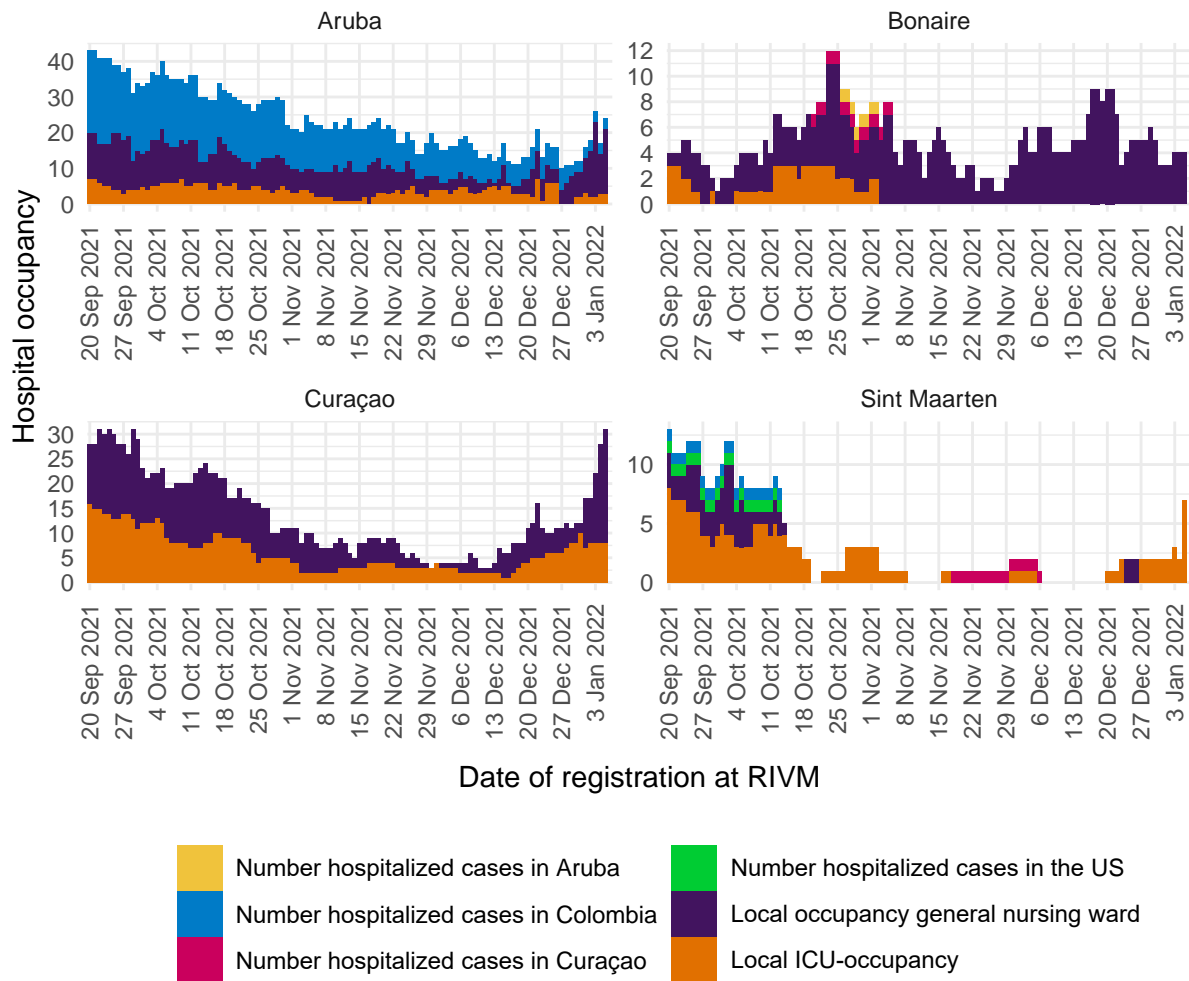


Figure 1: Progression of COVID-related hospital occupation over time ^{1,2,3,4,5}

¹ This figure presents the number of reported persons who have tested positive for SARS-CoV-2 during or before admission on the general hospital ward and/or ICU.

² The purple data represent the ICU-occupation over time, per island. The green data represent the occupation of the general hospital ward over time, per island.

³ Due to the low number of hospitalised patients on Saba en St Eustatius, these islands have not been included in this graph.

⁴ Based on the most recent data registered for Bonaire, the admission status is unknown for 234 persons who have tested positive for SARS-CoV-2 since January 1st, 2021. These cases have not been included in this graph.

⁵ The reported data has been presented by the date of reporting to the RIVM. These numbers can lag behind when the most recent data has not yet been reported to the RIVM.

Table 4: SARS-CoV-2 incidence rate per 100,000 residents on the CAS- and BES-islands¹, as reported to RIVM

Island	Incidence rate per 100,000 residents	
	Previous week ²	Previous two weeks ³
Aruba	3585	5623
Bonaire	1834	2365
Curaçao	2459	3927
Saba	2659	3962
Sint Eustatius	2769	3533
Sint Maarten	1200	1921

¹ The calculated incidence rates include the estimated number of undocumented migrants on each island, see Table 5.

² The incidence rate per 100,000 persons, for the previous week, has been calculated from 30 december 2021 until 5 januari 2022.

³ The incidence rate per 100,000 residents, for the previous two weeks, has been calculated from 23 december 2021 until 5 januari 2022.

Table 5: Number of residents and acreage of the CAS- and BES-islands¹

Island	Capital city	Residents	Acreage	Political status
Aruba	Oranjestad	125.282	180 km ²	Country within the Kingdom of The Netherlands
Bonaire	Kralendijk	23.173	288 km ²	Dutch municipality
Curaçao	Willemstad	164.223	444 km ²	Country within the Kingdom of The Netherlands
Saba	The Bottom	1.918	13 km ²	Dutch municipality
Sint Maarten	Philipsburg	62.323	34 km ²	Country within the Kingdom of The Netherlands
Sint Eustatius	Oranjestad	3.142	21 km ²	Dutch municipality

¹ These numbers refer to the 2021 population sizes. Each island counts a substantial population of undocumented migrants. The reported incidence rates include the estimated population of undocumented migrants. On Aruba, Curaçao, and Dutch St Maarten the population size is estimated to be between 8,000 and 20,000 migrants in 2021. On Bonaire the population size is estimated around 1,400 migrants. These data are relevant to include as these populations are difficult to reach for local public health services and often have less access to curative care.

2 SARS-CoV-2 progression over time

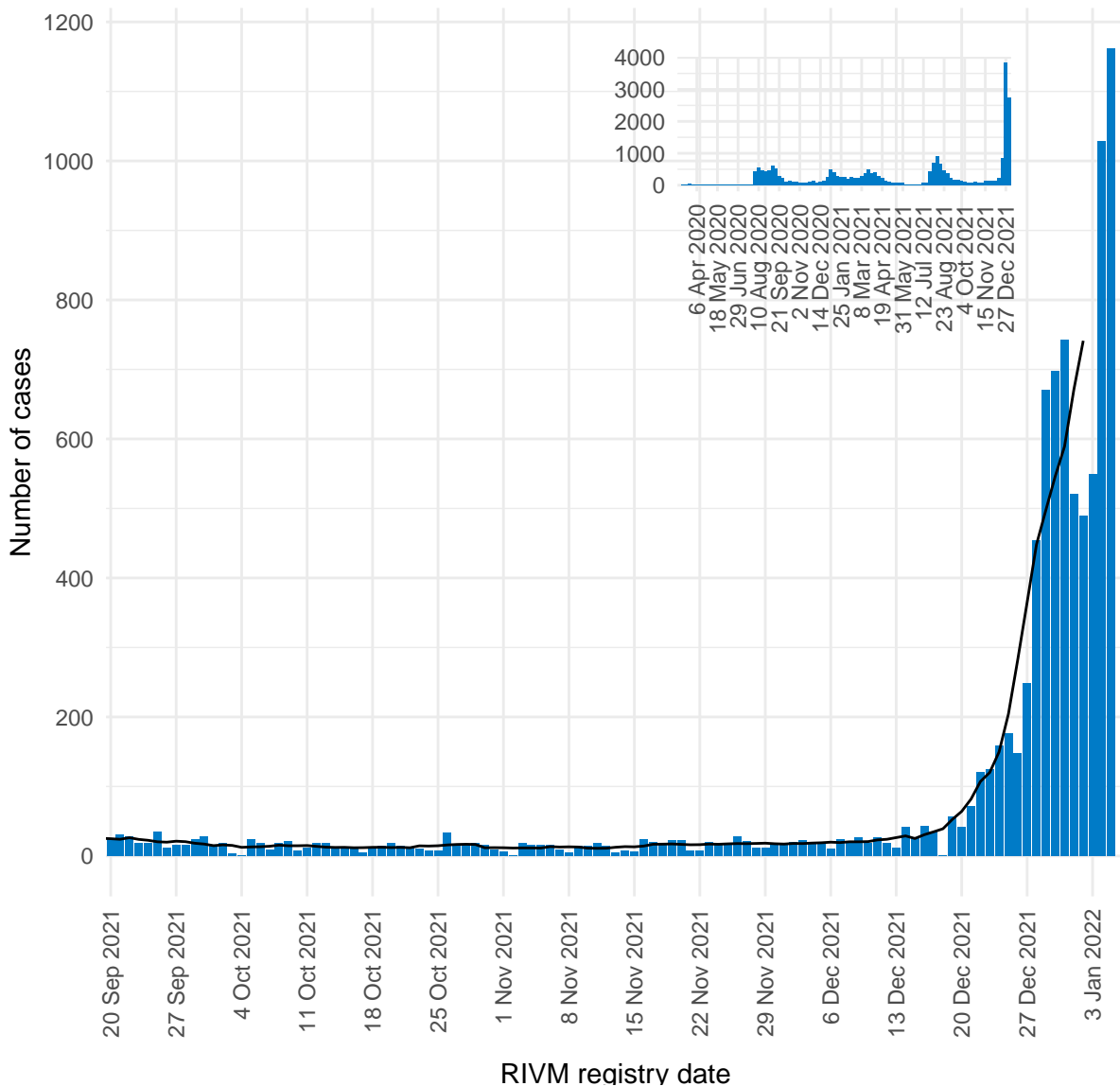


Figure 2: Number of daily reported SARS-CoV-2 cases on Aruba, presented by RIVM registry date^{1,2}.

¹ This figure displays the daily number of new SARS-CoV-2 by date of reporting to the RIVM. The black line represents the 7-day moving average of new infections. The vertical axes of figures 2-7 differ due to dissimilarities in the quantity of cases between the islands.

² The reported data has been presented by the date of reporting to the RIVM. These numbers can lag behind when the most recent data has not yet been reported to the RIVM.

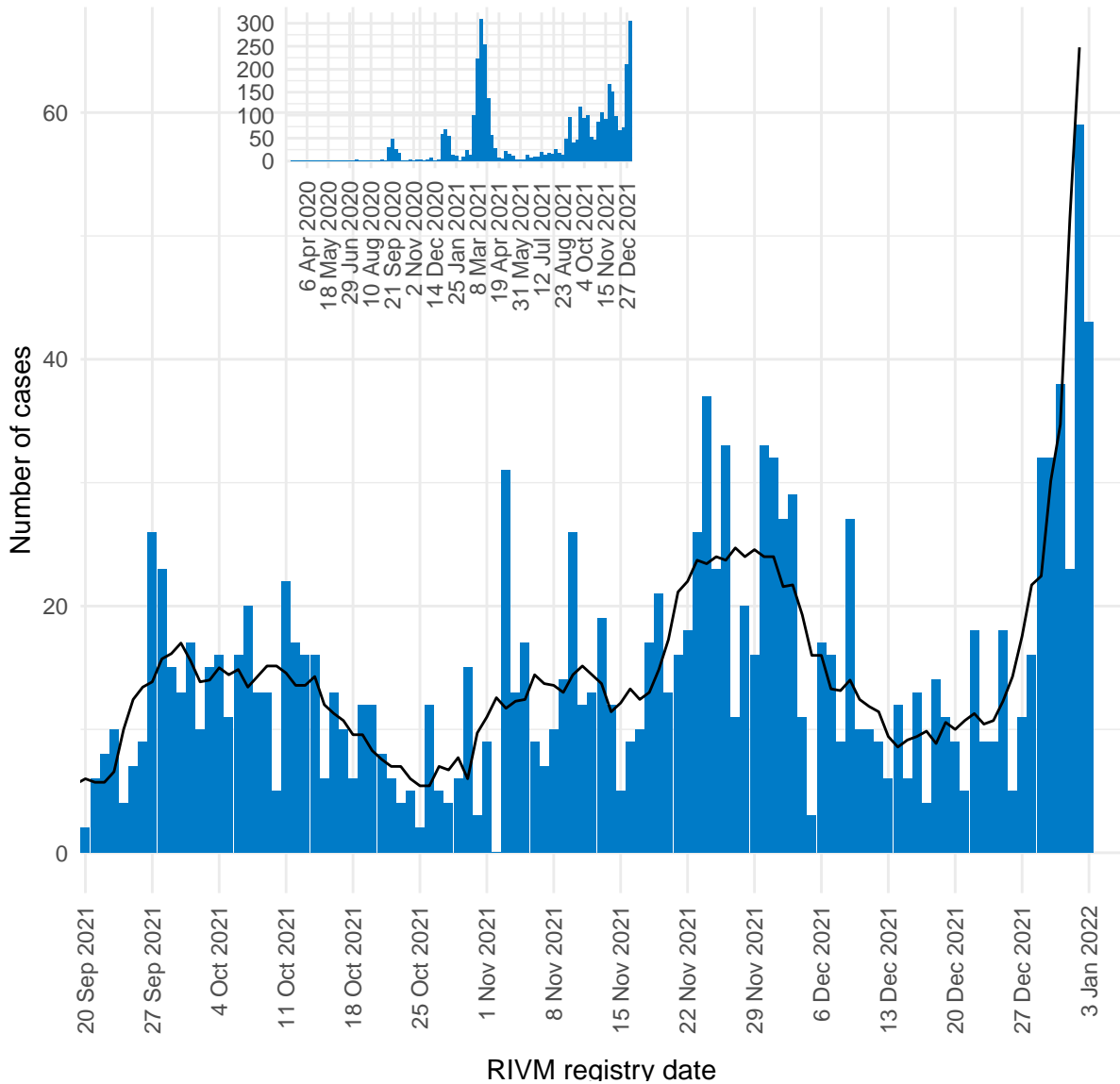


Figure 3: Number of daily reported SARS-CoV-2 cases on Bonaire, presented by RIVM registry date^{1,2}.

¹ This figure displays the daily number of new SARS-CoV-2 by date of reporting to the RIVM. The black line represents the 7-day moving average of new infections. The vertical axes of figures 2-7 differ due to dissimilarities in the quantity of cases between the islands.

² The reported data has been presented by the date of reporting to the RIVM. These numbers can lag behind when the most recent data has not yet been reported to the RIVM.

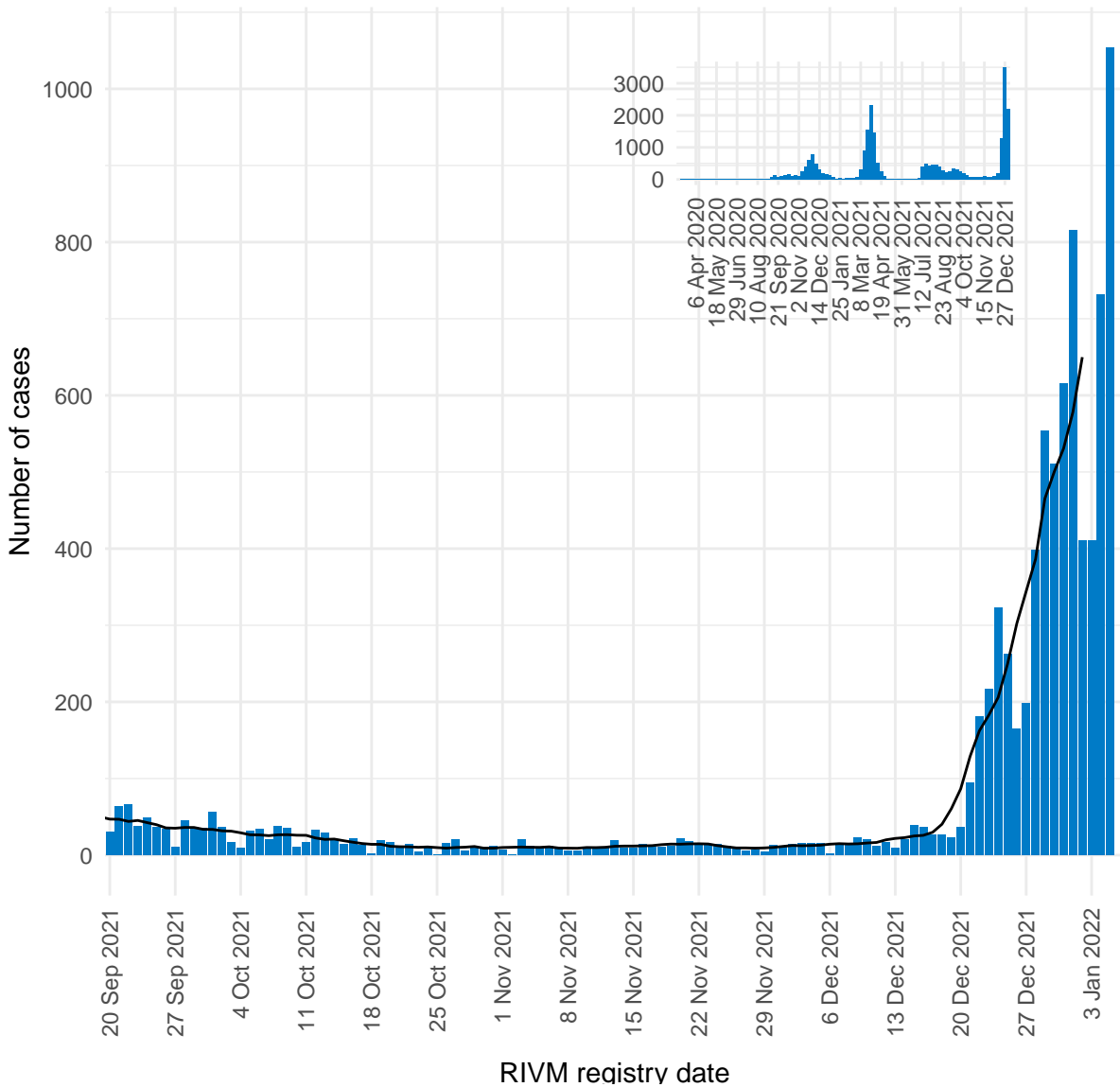


Figure 4: Number of daily reported SARS-CoV-2 cases on Curaçao, presented by RIVM registry date^{1,2}.

¹ This figure displays the daily number of new SARS-CoV-2 by date of reporting to the RIVM. The black line represents the 7-day moving average of new infections. The vertical axes of figures 2-7 differ due to dissimilarities in the quantity of cases between the islands.

² The reported data has been presented by the date of reporting to the RIVM. These numbers can lag behind when the most recent data has not yet been reported to the RIVM.

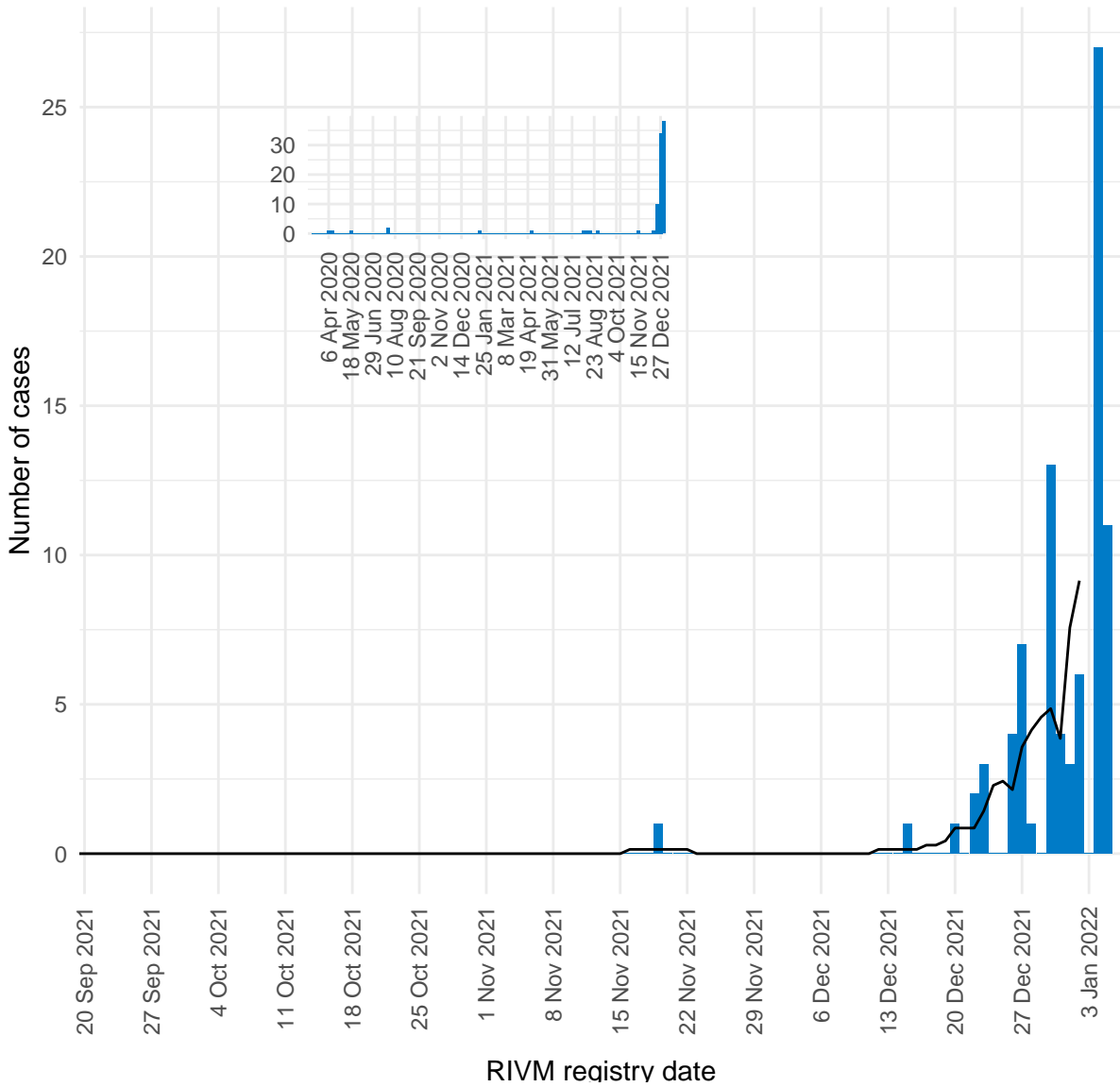


Figure 5: Number of daily reported SARS-CoV-2 cases on Saba, presented by RIVM registry date^{1,2}.

¹ This figure displays the daily number of new SARS-CoV-2 by date of reporting to the RIVM. The black line represents the 7-day moving average of new infections. The vertical axes of figures 2-7 differ due to dissimilarities in the quantity of cases between the islands.

² The reported data has been presented by the date of reporting to the RIVM. These numbers can lag behind when the most recent data has not yet been reported to the RIVM.

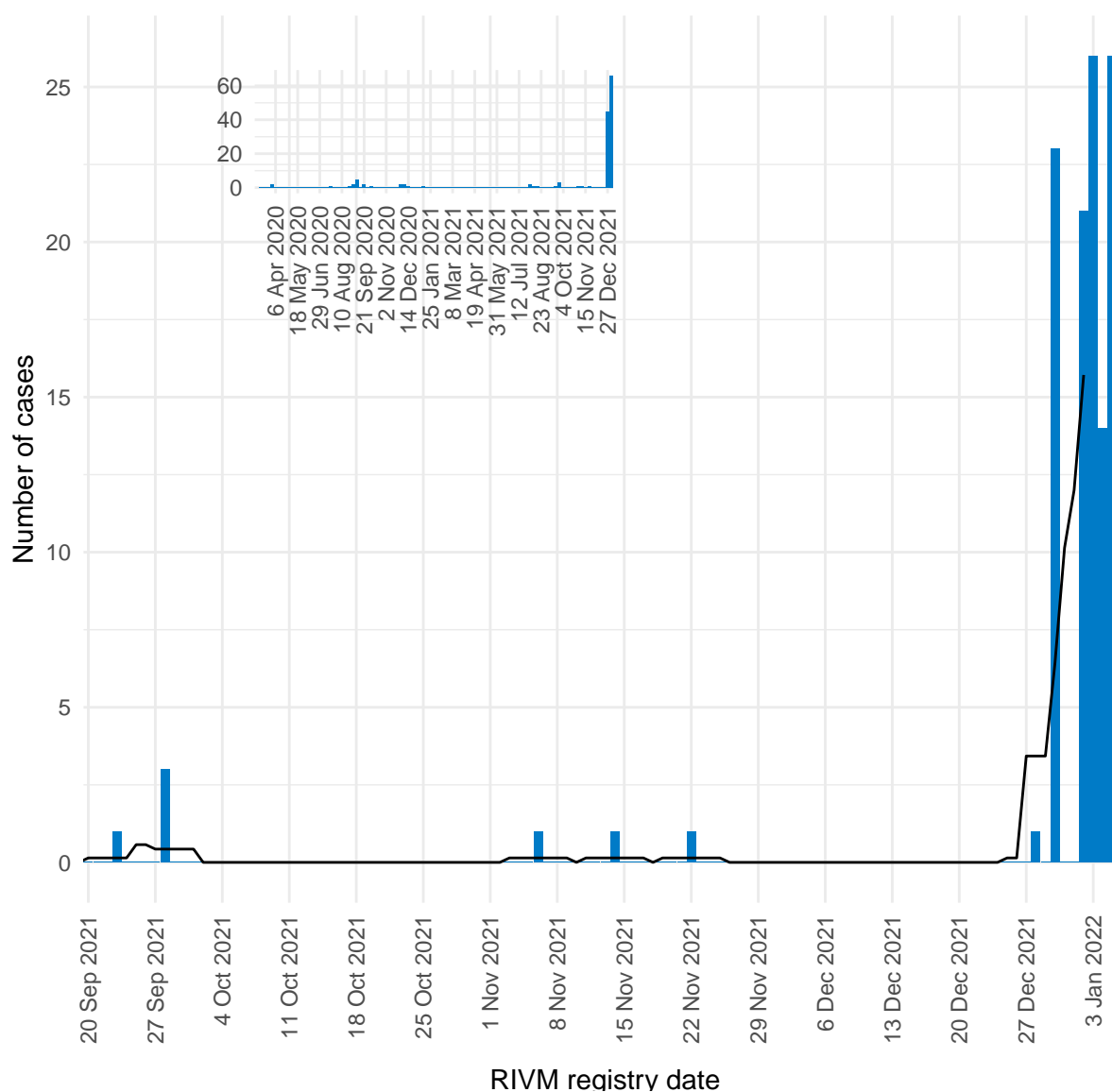


Figure 6: Number of daily reported SARS-CoV-2 cases on St Eustatius, presented by RIVM registry date^{1,2}.

¹ This figure displays the daily number of new SARS-CoV-2 by date of reporting to the RIVM. The black line represents the 7-day moving average of new infections. The vertical axes of figures 2-7 differ due to dissimilarities in the quantity of cases between the islands.

² The reported data has been presented by the date of reporting to the RIVM. These numbers can lag behind when the most recent data has not yet been reported to the RIVM.

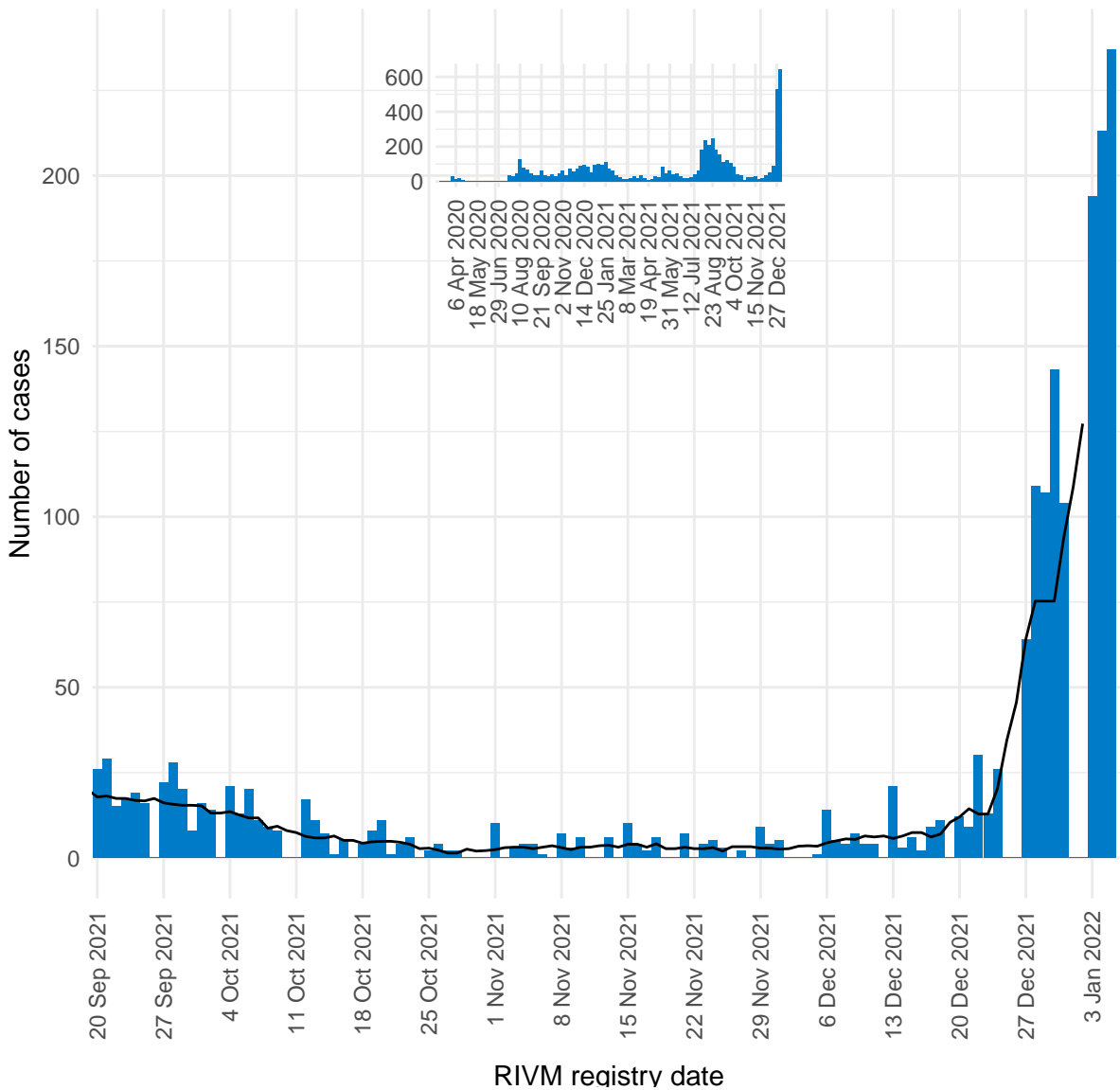


Figure 7: Number of daily reported SARS-CoV-2 cases on Dutch St Maarten, presented by RIVM registry date^{1,2}.

¹ This figure displays the daily number of new SARS-CoV-2 by date of reporting to the RIVM. The black line represents the 7-day moving average of new infections. The vertical axes of figures 2-7 differ due to dissimilarities in the quantity of cases between the islands.

² The reported data has been presented by the date of reporting to the RIVM. These numbers can lag behind when the most recent data has not yet been reported to the RIVM.

3 SARS-CoV-2 three week average incidence rate, progression over time

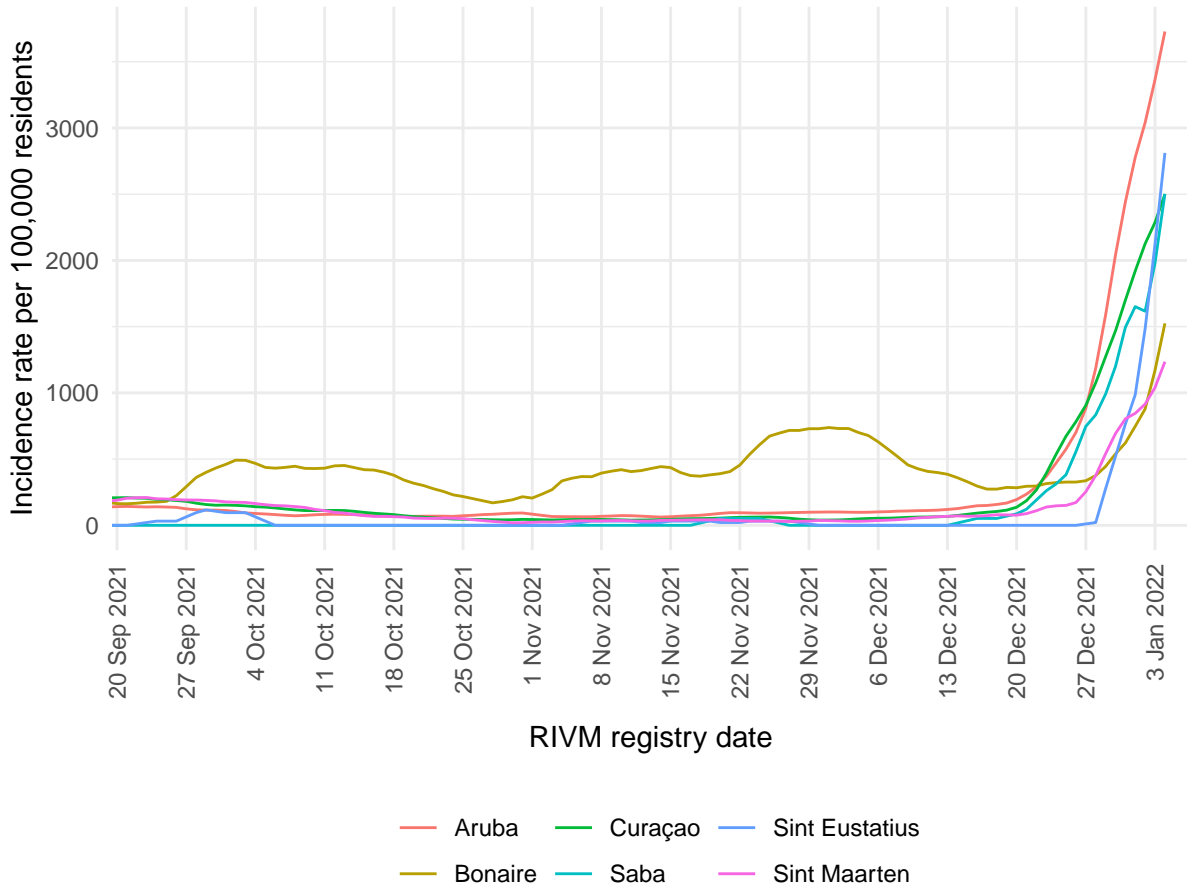


Figure 8: Three week average number of reported cases per 100,000 residents by RIVM registry date, on Curaçao, Aruba, Dutch St Maarten, Saba, Sint Eustatius, and Bonaire^{1,2}.

¹ This figure displays the 3-week average incidence rate per island per 100,000 residents, including the population of undocumented migrants on each island. Each line on the vertical axis indicates a weekly average of the incidence rate (defined as the number of new cases per 100,000 persons per week, over the total population) over a period of three weeks. For example: the reported value on January 4th 2021, is the weekly average of the incidence rate between December 28th, 2020 and January 11th, 2021.

4 Number of COVID-19 vaccine doses administered on the CAS-BES islands

Table 6: Number of first and second doses of COVID-19 vaccine administered until 3 januari 2022¹.

	Aruba	Bonaire	Curaçao	Saba	Sint Eu- statius	Sint Maarten ²
Number of persons who have received their first dosis (aged 12+ years)	74565	17213	103447	1582	1525	28222
Number of persons who have received their first and second dosis (aged 12+ years)	69139	15368	95933	1563	1489	25266
Number of fully vaccinated persons (aged 12+ years) ³	69885	15368	97501	1563	1489	25266
Number of high risk persons (aged 18-59 years) who have received their first dosis ^{4,5}	3837	-	9379	-	-	5369
Number of fully vaccinated high risk persons (aged 18-59 years) ⁵	3664	-	8813	-	-	3064

¹ The vaccination coverage data presented here is reported by the islands to the RIVM on a weekly basis. These data may lag behind from the vaccination coverage data presented by the island officials.

² These data refer to the numbers of vaccinated persons on the Dutch side of St Maarten. Vaccination coverage on the French side of St Martin is reported by Santé Publique France on a weekly basis.

³ The number of fully vaccinated persons is defined as the number of completed vaccinations. This also includes persons who only require one dose of vaccine to be considered as fully vaccinated, due to having a history of SARS-CoV-2 infection. Both Aruba and Curaçao are reporting these data separately from the number of persons who have received two doses of vaccine. Dutch St Maarten and the BES-islands are currently not reporting these data. The number of completed vaccinations on those islands may therefore be an underestimation.

⁴ For the BES islands, no information was collected about high- and low-risk groups, because all residents within this age group could register for a vaccination at the same time.

⁵ Vaccination data for persons aged 60+ cannot be displayed here because these data are not reported to RIVM.

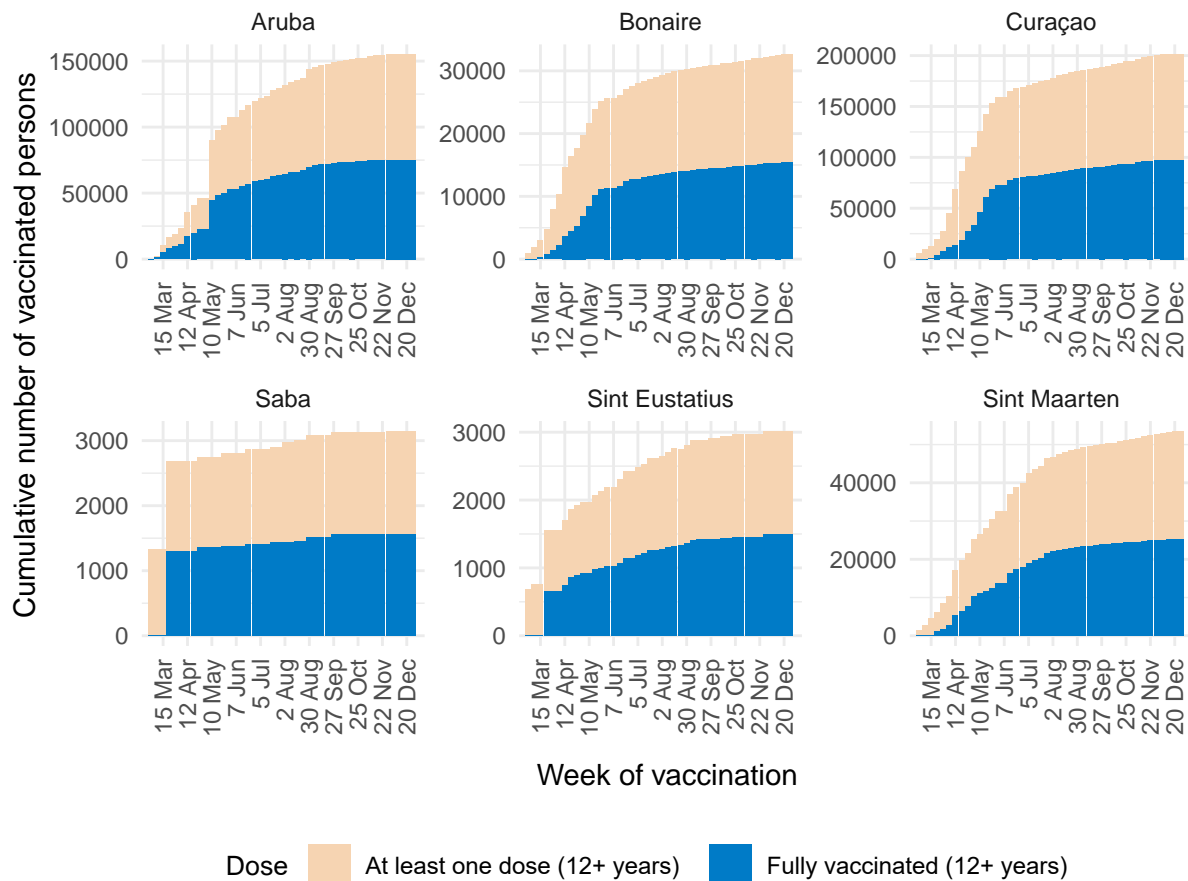


Figure 9: Number of first and second doses of COVID-19 vaccine administered, cumulative by vaccination date, until 3 januari 2022^{1,2,3}.

¹ The vaccination coverage data presented here is reported by the islands to the RIVM on a weekly basis. These data may lag behind from the vaccination coverage data presented by the island officials.

² These data refer to the numbers of vaccinated persons on the Dutch side of St Maarten. Vaccination coverage on the French side of St Martin is reported by Santé Publique France on a weekly basis.

³ The number of fully vaccinated persons is defined as the number of completed vaccinations. This also includes persons who only require one dose of vaccine to be considered as fully vaccinated, due to having a history of SARS-CoV-2 infection. Both Aruba and Curaçao are reporting these data separately from the number of persons who have received two doses of vaccine. Dutch St Maarten and the BES-islands are currently not reporting these data. The number of completed vaccinations on those islands may therefore be an underestimation.

5 Vaccination coverage on the CAS-BES islands

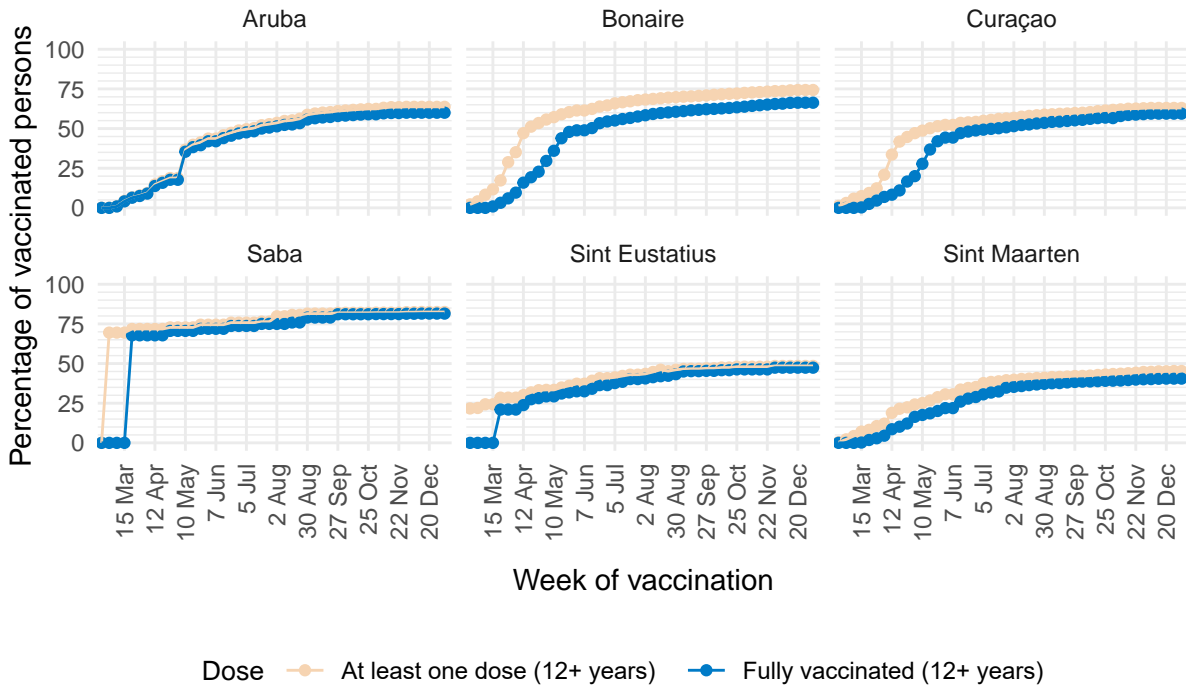


Figure 10: Percentage of residents aged 12 years or older who have received at least one vaccination dose and the percentage of residents aged 12 or older who have been fully vaccinated according to the current vaccination schedule of the vaccines used¹⁻⁴.

¹ The vaccination coverage data presented here is reported by the islands to the RIVM on a weekly basis. These data may lag behind from the vaccination coverage data presented by the island officials.

² These data refer to the numbers of vaccinated persons on the Dutch side of St Maarten. Vaccination coverage on the French side of St Martin is reported by Santé Publique France on a weekly basis.

³ The vaccination coverage is defined as: Persons aged 12+ who have received at least one dose. A one-dose schedule is sufficient for persons who have indicated that they have demonstrably experienced COVID-19 in the past six months. They are included in the ‘fully vaccinated’ percentages presented in this figure. These numbers are reported separately per week 21 by Curaçao and week 22 by Aruba.

⁴ The number of fully vaccinated persons is defined as the number of completed vaccinations. This also includes persons who only require one dose of vaccine to be considered as fully vaccinated, due to having a history of SARS-CoV-2 infection. Both Aruba and Curaçao are reporting these data separately from the number of persons who have received two doses of vaccine. Dutch St Maarten and the BES-islands are currently not reporting these data. The number of completed vaccinations on those islands may therefore be an underestimation.