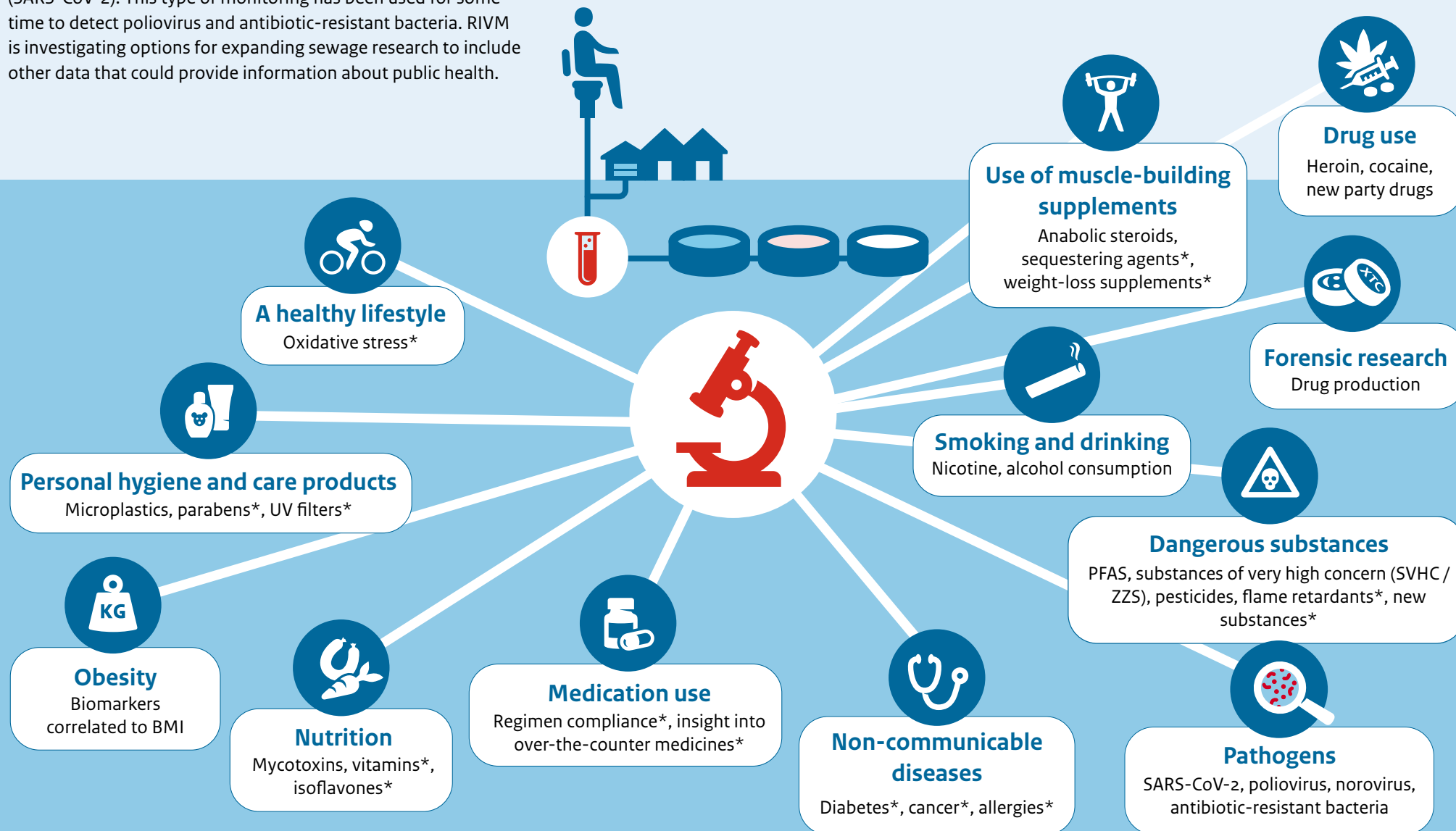


Sewage as an indicator of public health



National Institute for Public Health
and the Environment
Ministry of Health, Welfare and Sport

Sewage research is now being used to detect the coronavirus (SARS-CoV-2). This type of monitoring has been used for some time to detect poliovirus and antibiotic-resistant bacteria. RIVM is investigating options for expanding sewage research to include other data that could provide information about public health.



*These parameters are not yet used in sewage research. Further research is needed to determine whether this is possible.